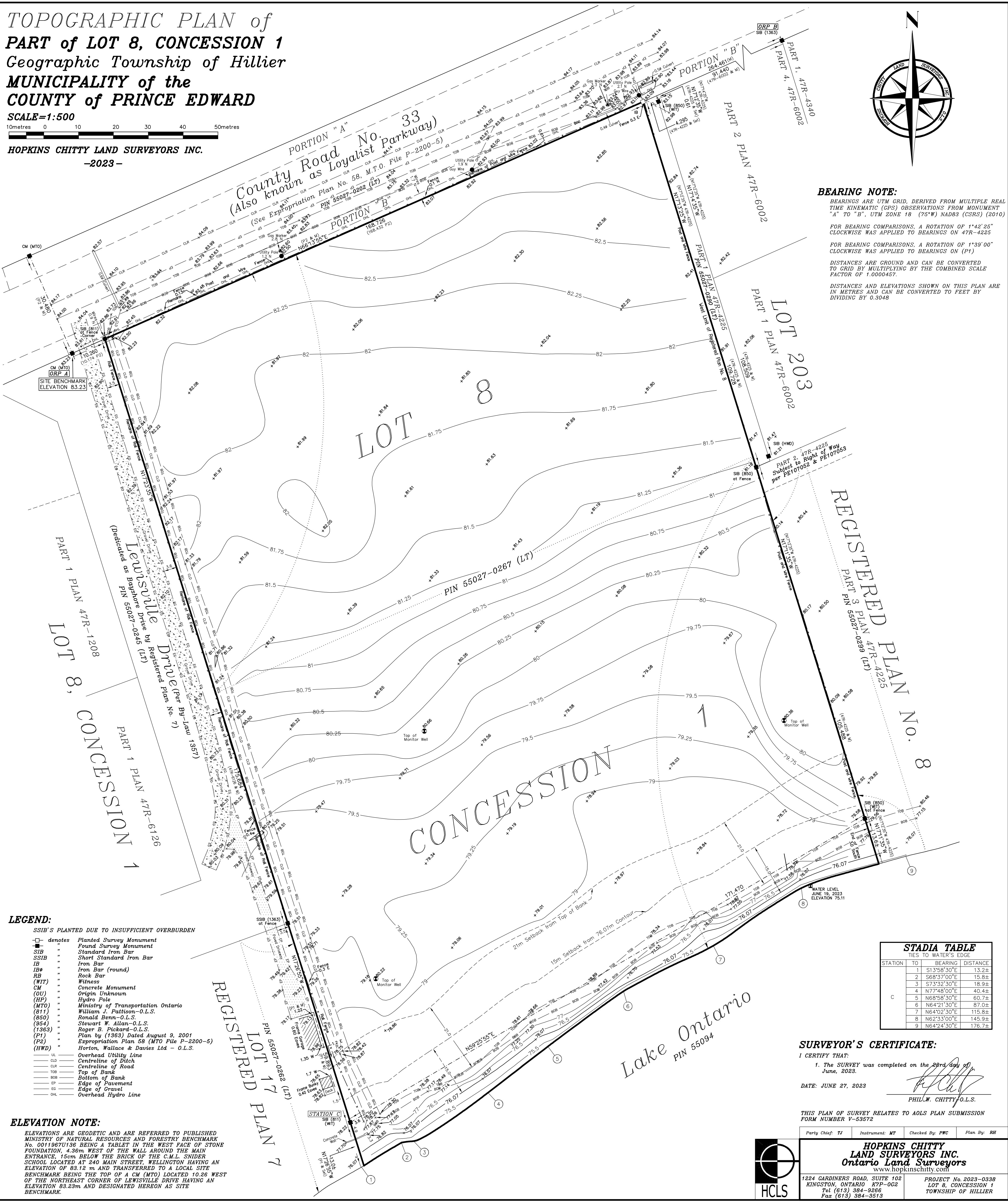
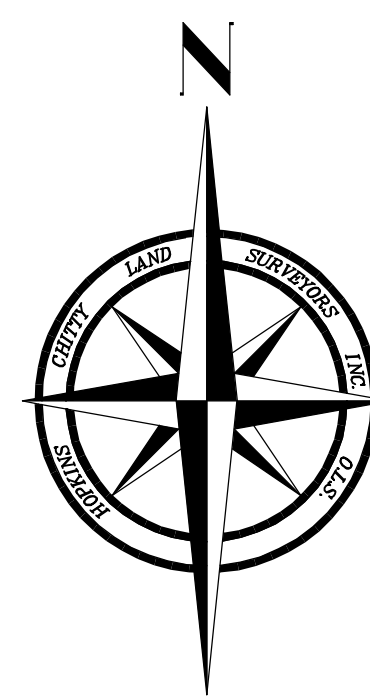


**TOPOGRAPHIC PLAN of
PART of LOT 8, CONCESSION 1
Geographic Township of Hillier
MUNICIPALITY of the
COUNTY of PRINCE EDWARD**

SCALE=1:500
0metres 10 20 30 40 50metres

**HOPKINS CHITTY LAND SURVEYORS INC.
-2023-**



BEARING NOTE:
BEARINGS ARE UTM GRID, DERIVED FROM MULTIPLE REAL TIME KINEMATIC (GPS) OBSERVATIONS FROM MONUMENT "A" TO "B", UTM ZONE 18 (75°W) NAD83 (CSRS) (2010)
FOR BEARING COMPARISONS, A ROTATION OF 1°42'25" CLOCKWISE WAS APPLIED TO BEARINGS ON 47R-4225
FOR BEARING COMPARISONS, A ROTATION OF 1°39'00" CLOCKWISE WAS APPLIED TO BEARINGS ON (P1)
DISTANCES ARE GROUND AND CAN BE CONVERTED TO GRID BY MULTIPLYING BY THE COMBINED SCALE FACTOR OF 1.0000457
DISTANCES AND ELEVATIONS SHOWN ON THIS PLAN ARE IN METRES AND CAN BE CONVERTED TO FEET BY DIVIDING BY 0.3048

- LEGEND:**
- SSIB'S PLANTED DUE TO INSUFFICIENT OVERBURDEN
 - denotes Planted Survey Monument
 - Found Survey Monument
 - SIB Standard Iron Bar
 - SSIB Short Standard Iron Bar
 - IB Iron Bar
 - IBR Iron Bar (round)
 - RB Rock Bar
 - (WIT) Witness
 - CM Concrete Monument
 - (OU) Origin Unknown
 - (HP) Hydro Pole
 - (MTO) Ministry of Transportation Ontario
 - (811) William J. Pattison-O.L.S.
 - (850) Ronald Benn-O.L.S.
 - (954) Stewart W. Allan-O.L.S.
 - (1363) Roger B. Pickard-O.L.S.
 - (P1) Plan by (1963) Dated August 9, 2001
 - (P2) Expropriation Plan 58 (MTO File P-2200-5)
 - (HWD) Horton, Wallace & Davies Ltd - O.L.S.
 - UL Overhead Utility Line
 - CLD Centreline of Ditch
 - CLR Centreline of Road
 - TOR Top of Road
 - BOB Bottom of Bank
 - EP Edge of Pavement
 - EG Edge of Gravel
 - OH Overhead Hydro Line

ELEVATION NOTE:
ELEVATIONS ARE GEODETIC AND ARE REFERRED TO PUBLISHED MINISTRY OF NATURAL RESOURCES AND FORESTRY BENCHMARK No. 0011967U136 BEING A TABLET IN THE WEST FACE OF STONE FOUNDATION, 4.36m WEST OF THE WALL AROUND THE MAIN ENTRANCE, 15cm BELOW THE BRICK OF THE C.M.L. SNIDER SCHOOL LOCATED AT 240 MAIN STREET WELLINGTON HAVING AN ELEVATION OF 83.12 m AND TRANSFERRED TO A LOCAL SITE BENCHMARK BEING THE TOP OF A CM (MTO) LOCATED 10.26 WEST OF THE NORTHEAST CORNER OF LEWISVILLE DRIVE HAVING AN ELEVATION 83.23m AND DESIGNATED HEREON AS SITE BENCHMARK.

STADIA TABLE
TIES TO WATER'S EDGE

STATION	TO	BEARING	DISTANCE
C	1	S13°58'30"E	13.2±
	2	S68°37'00"E	15.8±
	3	S73°32'30"E	18.9±
	4	N77°48'00"E	40.4±
	5	N68°58'30"E	60.7±
	6	N64°21'30"E	87.0±
	7	N64°02'30"E	115.8±
	8	N62°33'00"E	145.9±
	9	N64°24'30"E	176.7±

SURVEYOR'S CERTIFICATE:
I CERTIFY THAT:
1. The SURVEY was completed on the 28th day of June, 2023.
DATE: JUNE 27, 2023
[Signature]
PHIL W. CHITTY-O.L.S.

THIS PLAN OF SURVEY RELATES TO AOLS PLAN SUBMISSION FORM NUMBER V-53572

Party Chief: TC	Instrument: MT	Checked by: PWC	Plan By: RH
-----------------	----------------	-----------------	-------------

HOPKINS CHITTY LAND SURVEYORS INC.
Ontario Land Surveyors
www.hopkinschitty.com

1224 GARDINERS ROAD, SUITE 102
KINGSTON, ONTARIO K7P-0C2
Tel (613) 384-9266
Fax (613) 384-3513

PROJECT No. 2023-0338
LOT 8, CONCESSION 1
TOWNSHIP OF HILLIER

