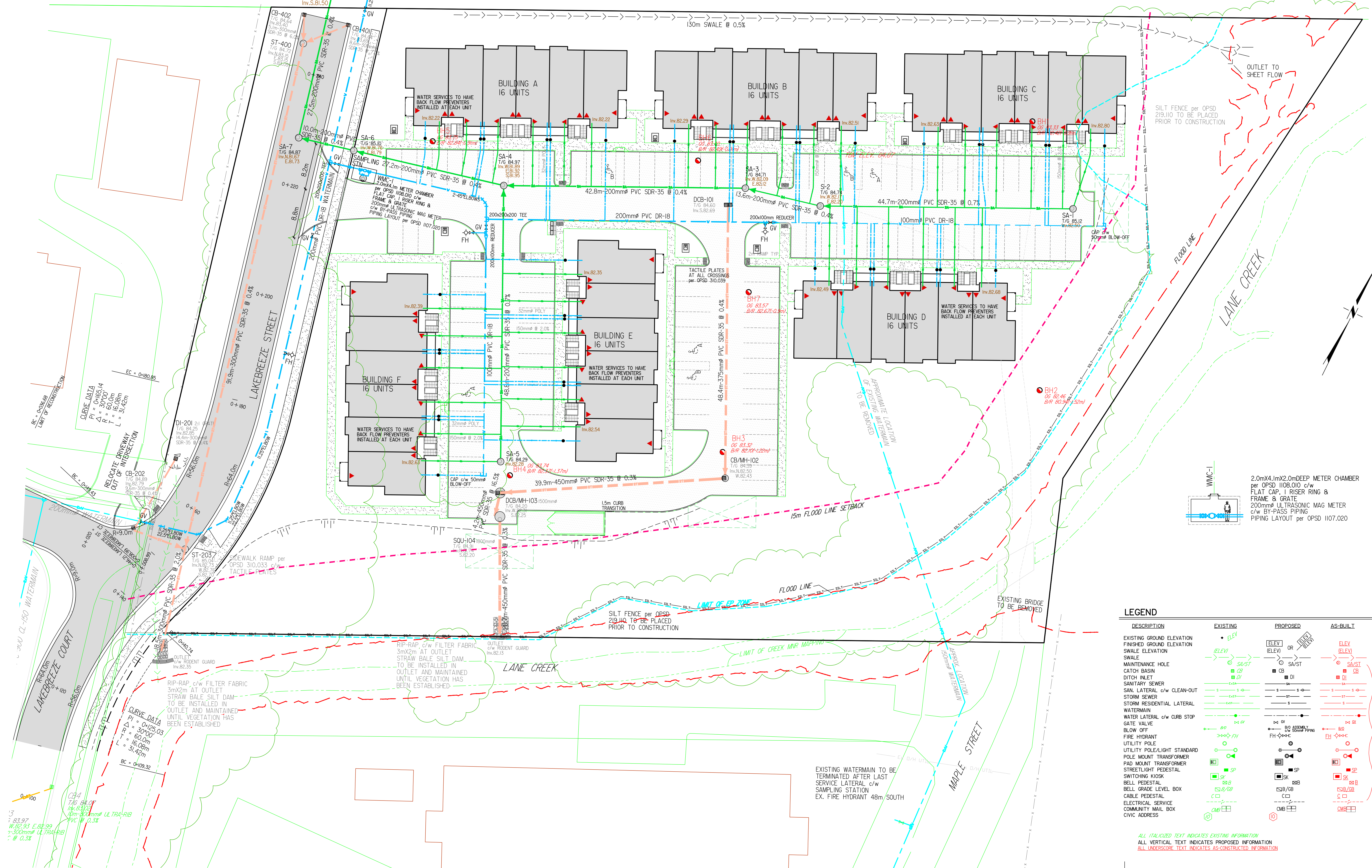


# MILLENNIUM TRAIL

FUTURE FEEDER WATERMAIN  
FUTURE SANITARY TRUNK SEWER



**SITE SERVICING PLAN**  
STACKED TOWNHOUSE DEVELOPMENT  
**DRAWING** Map/80-01

SCALE: 1:300  
DESIGNED: A.H.V.  
DRAWN: S.D.S.  
DATE: 2-MAY-09  
FILE: 13000000-PRINCE EDWARD COUNTY  
MUNICIPALITY OF PRICE EDWARD COUNTY  
SZAM CAPITAL PARTNERS - OWNER

NO.	DATE	DESCRIPTION	BY	CHK'D BY
1	APR. 28/24	MUNICIPAL COMMENTS FEB. 22/24 & ARCHITECT REVISIONS	S.D.S.	
2	SEPT. 15/22	MUNICIPAL REVIEW & APPROVAL	S.D.S.	
3				
4				
5				

80 MAPLE STREET DEVELOPMENT  
MUNICIPALITY OF PRICE EDWARD COUNTY  
SZAM CAPITAL PARTNERS - OWNER

**VAN MEEB LIMITED**  
LAND DEVELOPMENT • PROJECT MANAGEMENT • ENGINEERING  
83 North Park Street, Belleville, ON, N8P 2T6 Tel: 613-889-0771

**LEGEND**

DESCRIPTION	EXISTING	PROPOSED	AS-BUILT
EXISTING GROUND ELEVATION	ELEV		
FINISHED GROUND ELEVATION		ELEV	ELEV
SWALE ELEVATION	ELEV		
SWALE		ELEV	
MAINTENANCE HOLE	SA/ST	SA/ST	SA/ST
CATCH BASIN	CB	CB	CB
DITCH INLET	DI	DI	DI
SANITARY SEWER	SS	SS	SS
SAN. LATERAL c/w CLEAN-OUT	SL	SL	SL
STORM SEWER	SS	SS	SS
STORM RESIDENTIAL LATERAL	SL	SL	SL
WATERMAIN	WM	WM	WM
WATER LATERAL c/w CURB STOP	WL	WL	WL
GATE VALVE	GV	GV	GV
BLOW OFF	BO	BO	BO
FIRE HYDRANT	FH	FH	FH
UTILITY POLE	UP	UP	UP
UTILITY POLE/LIGHT STANDARD	UL	UL	UL
POLE MOUNT TRANSFORMER	PT	PT	PT
STREETLIGHT PEDESTAL	SP	SP	SP
SWITCHING KIOSK	SK	SK	SK
BELL PEDESTAL	BP	BP	BP
BELL GRADE LEVEL BOX	BL	BL	BL
CABLE PEDESTAL	CP	CP	CP
ELECTRICAL SERVICE	ES	ES	ES
COMMUNITY MAIL BOX	CM	CM	CM
CIVIC ADDRESS	CA	CA	CA

ONLY WHEN NOT INSTALLED AS PROPOSED

ALL ITALICIZED TEXT INDICATES EXISTING INFORMATION  
ALL VERTICAL TEXT INDICATES PROPOSED INFORMATION  
ALL UNDERSCORE TEXT INDICATES AS-CONSTRUCTED INFORMATION

3  
7: 83.97  
W: 82.93 E: 82.29  
7-300mm ULTRA-HIB  
PVC @ 0.3%

BC = 0+48.43  
CURVE DATA  
PI = 0+163.14  
R = 30.00'  
L = 60.0m  
T = 31.42m

BC = 0+109.32  
CURVE DATA  
PI = 0+125.03  
R = 30.00'  
L = 60.0m  
T = 31.42m

RELOCATE DRIVEWAY  
OUT OF INTERSECTION

RELOCATE DRIVEWAY  
OUT OF INTERSECTION

RELOCATE DRIVEWAY  
OUT OF INTERSECTION

RELOCATE DRIVEWAY  
OUT OF INTERSECTION

RELOCATE DRIVEWAY  
OUT OF INTERSECTION