

NOTE: GEO ELEVATIONS SHOWN ARE METRIC. REFER TO LATEST GRADING PLAN FOR GRADING.

LIMITING DISTANCE CALCULATIONS:
- FOR EACH UNIT WITHIN BLOCK

REAR OF UNIT 15:
PER OBC TABLE 9.10.15.4.
EXPOSING FACE: 249.98 Sq Ft (23.22 Sq M)
OPENINGS: 41.98 Sq Ft (3.90 Sq M)
LIMITING DISTANCE: 17.52 Ft (5.34M) Minimum
CALCULATED OPENING = 16.8% OF 75% ALLOWABLE.
** WITH INTERPOLATION OF TABLE VALUES - THIS PERCENTAGE OF OPENINGS IS PERMITTED.

REAR OF UNIT 14:
PER OBC TABLE 9.10.15.4.
EXPOSING FACE: 247.46 Sq Ft (22.99 Sq M)
OPENINGS: 41.98 Sq Ft (3.90 Sq M)
LIMITING DISTANCE: 17.52 Ft (5.34M) Minimum
CALCULATED OPENING = 17.0% OF 75% ALLOWABLE.
** WITH INTERPOLATION OF TABLE VALUES - THIS PERCENTAGE OF OPENINGS IS PERMITTED.

REAR OF UNIT 13:
PER OBC TABLE 9.10.15.4.
EXPOSING FACE: 247.46 Sq Ft (22.99 Sq M)
OPENINGS: 41.98 Sq Ft (3.90 Sq M)
LIMITING DISTANCE: 17.52 Ft (5.34M) Minimum
CALCULATED OPENING = 17.0% OF 75% ALLOWABLE.
** WITH INTERPOLATION OF TABLE VALUES - THIS PERCENTAGE OF OPENINGS IS PERMITTED.

REAR OF UNIT 12:
PER OBC TABLE 9.10.15.4.
EXPOSING FACE: 247.46 Sq Ft (22.99 Sq M)
OPENINGS: 41.98 Sq Ft (3.90 Sq M)
LIMITING DISTANCE: 17.52 Ft (5.34M) Minimum
CALCULATED OPENING = 17.0% OF 75% ALLOWABLE.
** WITH INTERPOLATION OF TABLE VALUES - THIS PERCENTAGE OF OPENINGS IS PERMITTED.

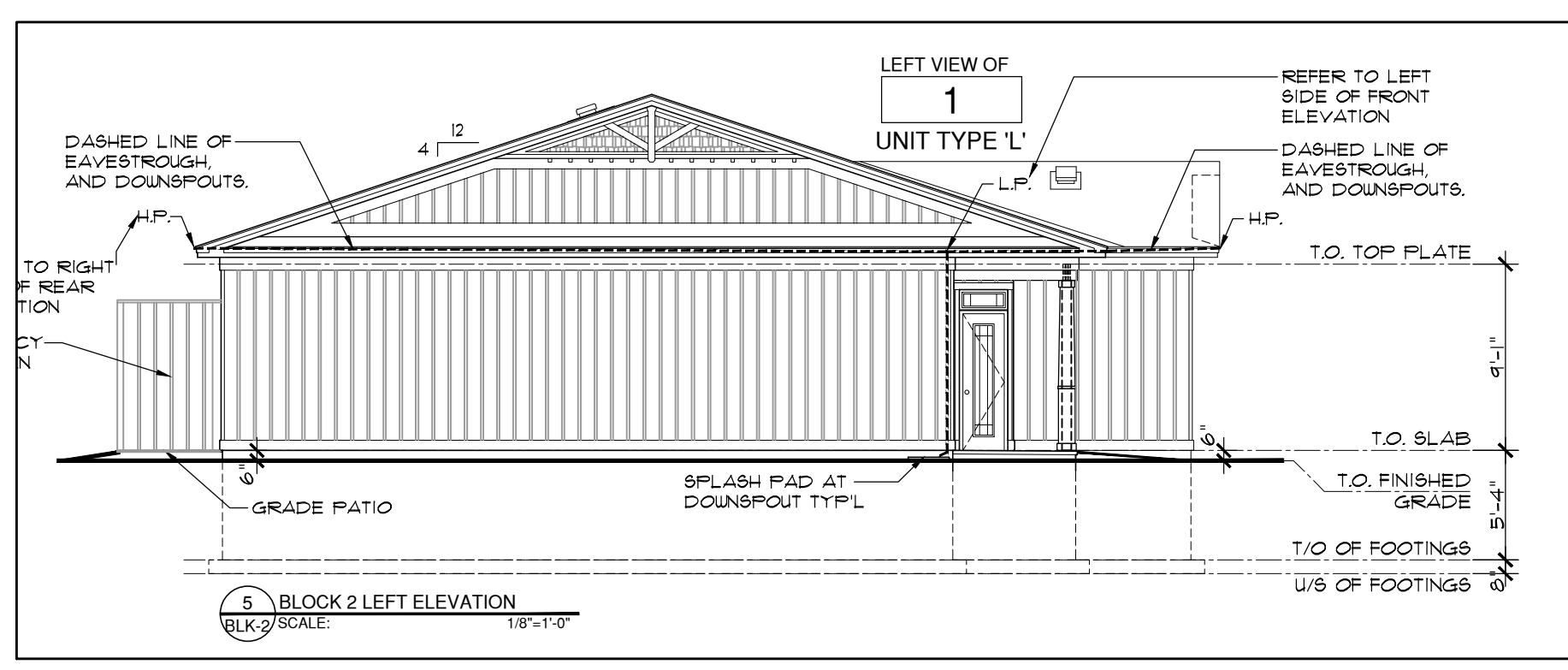
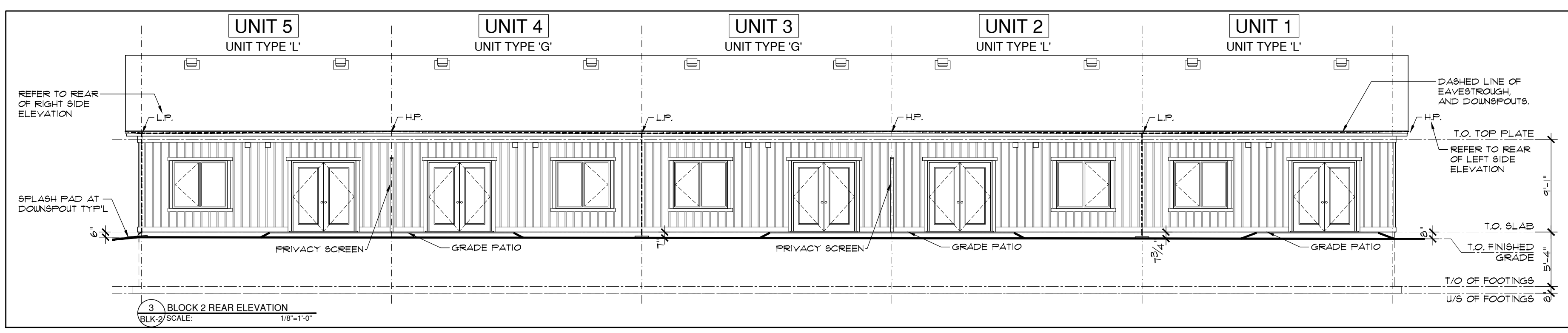
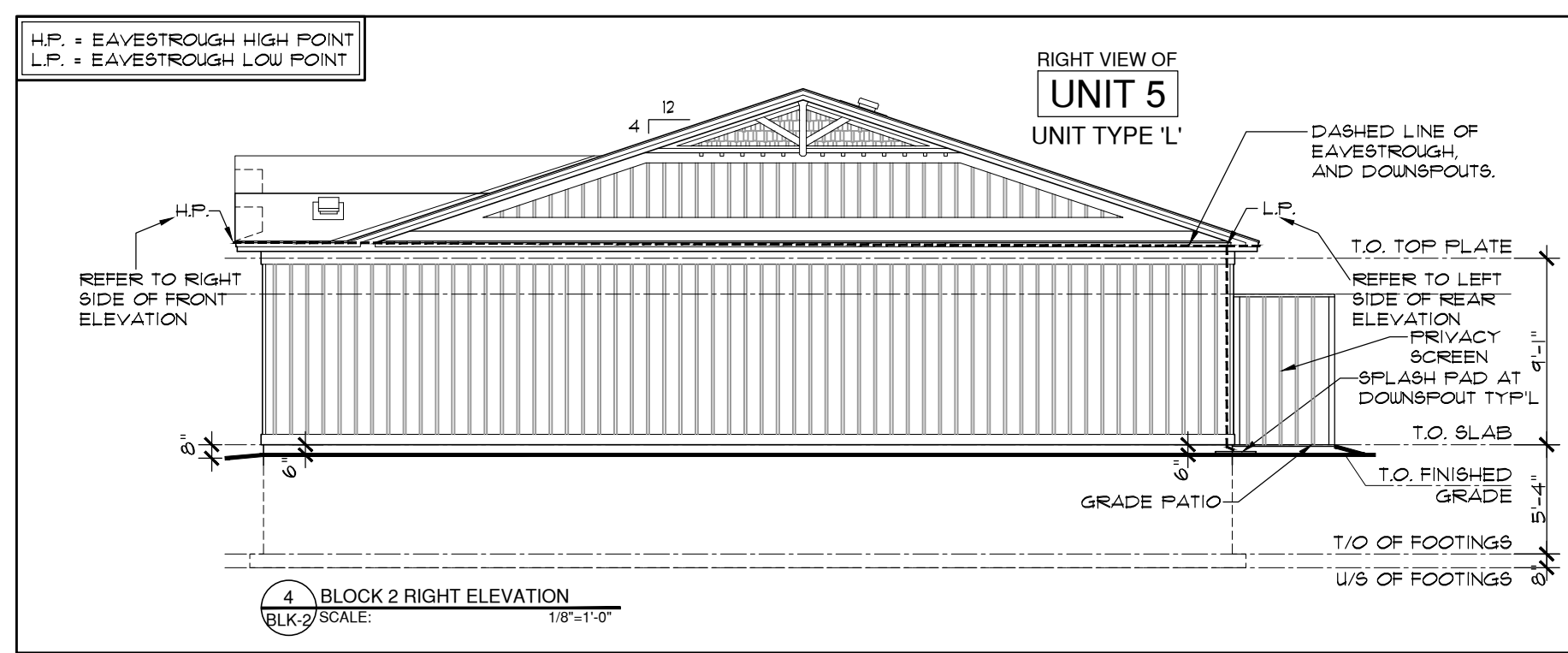
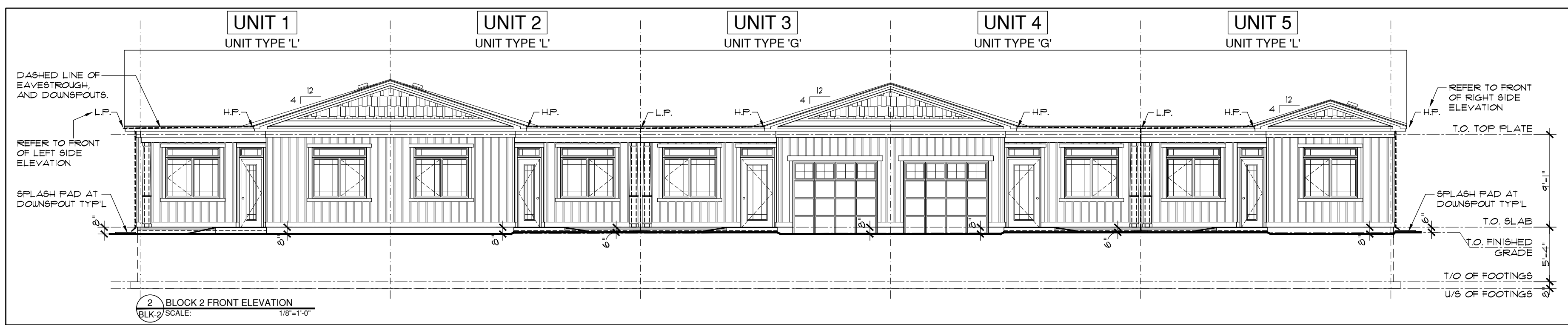
REAR OF UNIT 11:
PER OBC TABLE 9.10.15.4.
EXPOSING FACE: 249.98 Sq Ft (23.22 Sq M)
OPENINGS: 41.98 Sq Ft (3.90 Sq M)
LIMITING DISTANCE: 17.52 Ft (5.34M) Minimum
CALCULATED OPENING = 16.8% OF 75% ALLOWABLE.
** WITH INTERPOLATION OF TABLE VALUES - THIS PERCENTAGE OF OPENINGS IS PERMITTED.

LEFT SIDE OF UNIT 15:
PER OBC TABLE 9.10.15.4.
EXPOSING FACE: 359.22 Sq Ft (33.37 Sq M)
OPENINGS: 0.00 Sq Ft (0.00 Sq M)
LIMITING DISTANCE: 22.90 Ft (6.95M) Minimum
CALCULATED OPENING = 0.0% OF 80% ALLOWABLE.
** WITH INTERPOLATION OF TABLE VALUES - THIS PERCENTAGE OF OPENINGS IS PERMITTED.

RIGHT SIDE OF UNIT 11:
PER OBC TABLE 9.10.15.4.
EXPOSING FACE: 476.44 Sq Ft (44.26 Sq M)
OPENINGS: 0.00 Sq Ft (0.00 Sq M)
LIMITING DISTANCE: 22.90 Ft (6.95M) Minimum
CALCULATED OPENING = 0.0% OF 82% ALLOWABLE.
** WITH INTERPOLATION OF TABLE VALUES - THIS PERCENTAGE OF OPENINGS IS PERMITTED.

Project Management:
NAUTICAL LANDS GENERAL CONTRACTING
2000 CARP ROAD
CORNWALL, ONTARIO N6A 1L0
TEL: (613) 831-9039
FAX: (613) 831-0275
E-Mail: knoppner@nauticalandgroup.com

NOTE: REFER TO TYPICAL UNIT ELEVATIONS ON DRAWINGS A-3G AND A-3L DEPENDING ON GARAGE UNIT OR NON GARAGE UNIT FOR EXTERIOR FINISHES.



8	
7	
6	
5	
4	
3	
2	
1	

1 FEB 27/19 ISSUED FOR REVIEW

NO.	DATE	REVISION
1		THIS DRAWING IS ISSUED FOR THE PURPOSE INDICATED BELOW:
2		REVIEW
3		PERMIT
4		TENDER
5		CONSTRUCTION

IT IS THE RESPONSIBILITY OF THE APPROPRIATE CONTRACTOR TO CHECK AND VERIFY ALL DIMENSIONS ON SITE AND REPORT ALL ERRORS AND/OR OMISSIONS TO THE ARCHITECT (COPYRIGHT RESERVED).

ALL CONTRACTORS MUST COMPLY WITH ALL PERTINENT CODES AND BY-LAWS. DO NOT SCALE DRAWINGS.

THIS DRAWING MUST NOT BE USED FOR CONSTRUCTION UNLESS SIGNED BY THE ARCHITECT (COPYRIGHT RESERVED).

THIS DRAWING IS THE EXCLUSIVE PROPERTY OF NAUTICAL LANDS GROUP AND SHALL NOT BE USED WITHOUT WRITTEN CONSENT.

PROJECT: **WELLINGS OF PICTON PH. 3 TOWNHOUSES**

PICTON ONTARIO

DRAWING TITLE: **BLOCK 2 FOUNDATION PLAN AND ELEVATIONS**

North

DRAWN: SJK
DATE: FEB 27, 2019
SCALE: 1/8"=1'-0"
PROJECT No.: 1718
DRAWING No.: **BLK-2**