

**PLAN OF SURVEY OF
DANARDS ISLAND
IN FRONT OF LOT 16
CONCESSION 1, SOUTH SIDE OF EAST LAKE
TOWNSHIP OF ATHOL
NOW IN THE MUNICIPALITY OF THE
COUNTY OF PRINCE EDWARD**

METRIC SCALE 1 : 150

KEITH WATSON O.L.S.

THE INTENDED PLOT SIZE OF THIS PLAN IS 707MM IN WIDTH
BY 500MM IN HEIGHT WHEN PLOTTED AT A SCALE OF 1 : 150

METRIC :

DISTANCES AND COORDINATES SHOWN ON THIS PLAN ARE IN
METRES AND CAN BE CONVERTED TO FEET BY DIVIDING BY 0.3048.

OBSERVED REFERENCE POINTS DERIVED FROM GPS OBSERVATIONS
USING REAL TIME NETWORK (RTN), UTM ZONE 18, NAD83 (CSRS) 2010
COORDINATES TO RURAL ACCURACY PER SEC. 14 (2) OF O. REG 216/10

POINT ID	NORTHING	EASTING
A	4863331.02	323241.34
B	4863380.58	323270.33
C	4863392.13	323263.96

COORDINATES CANNOT, IN THEMSELVES, BE USED TO
RE-ESTABLISH THE CORNERS OR BOUNDARIES
SHOWN ON THIS PLAN

NOTES :

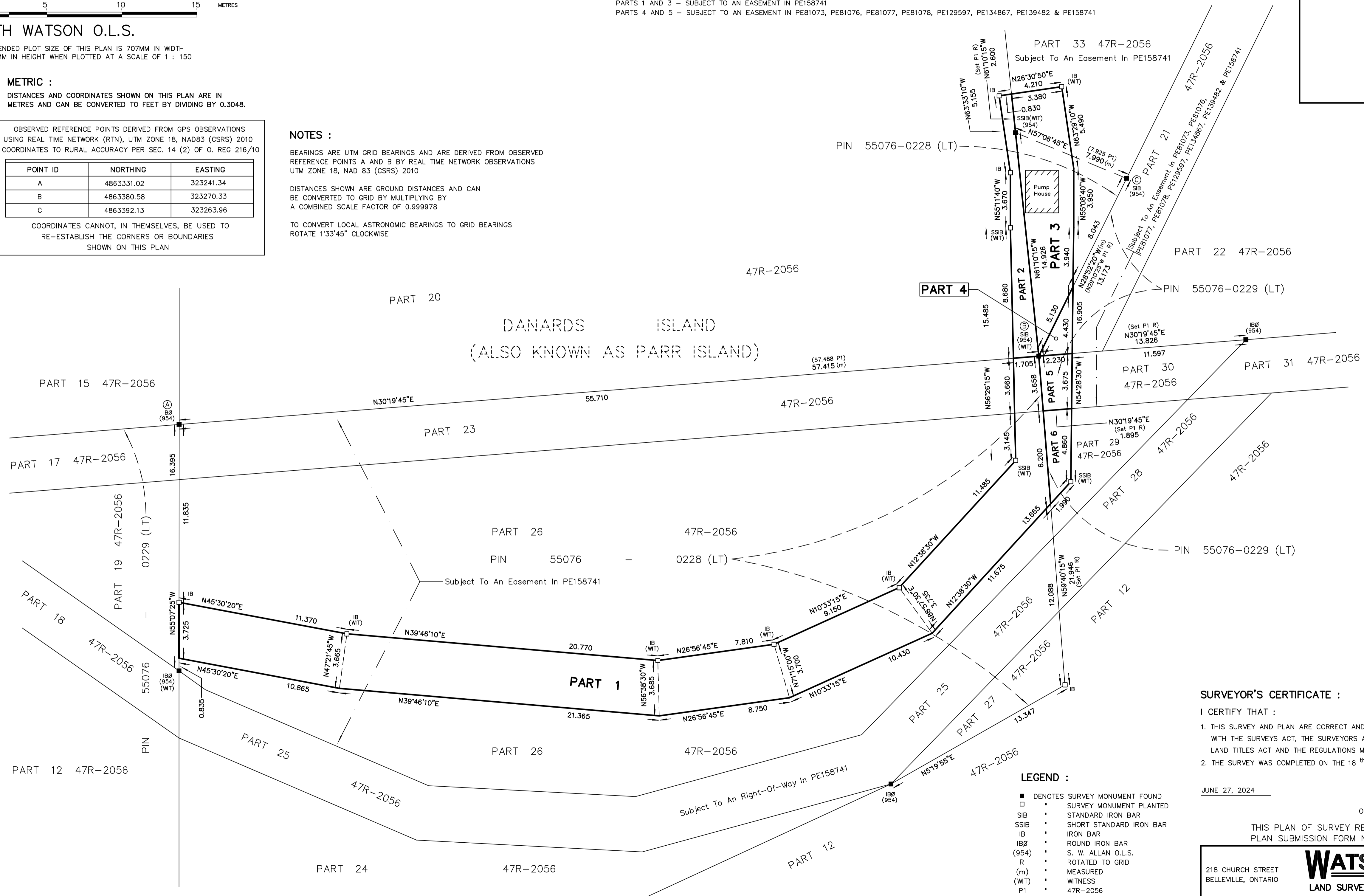
BEARINGS ARE UTM GRID BEARINGS AND ARE DERIVED FROM OBSERVED
REFERENCE POINTS A AND B BY REAL TIME NETWORK OBSERVATIONS
UTM ZONE 18, NAD 83 (CSRS) 2010

DISTANCES SHOWN ARE GROUND DISTANCES AND CAN
BE CONVERTED TO GRID BY MULTIPLYING BY
A COMBINED SCALE FACTOR OF 0.999978

TO CONVERT LOCAL ASTRONOMIC BEARINGS TO GRID BEARINGS
ROTATE 1°33'45" CLOCKWISE

SCHEDULE									
PART	LOT/BLOCK	CONCESSION/PLAN	PIN	AREA	PART	LOT/BLOCK	CONCESSION/PLAN	PIN	AREA
1	DANARDS ISLAND	IN FRONT OF LOT 16, SOUTH SIDE OF EAST LAKE	PART OF 55076-0228 (LT)	242.7 m ²	4	DANARDS ISLAND	IN FRONT OF LOT 16, SOUTH SIDE OF EAST LAKE	PART OF 55076-0229 (LT)	4.9 m ²
2	DANARDS ISLAND	IN FRONT OF LOT 16, SOUTH SIDE OF EAST LAKE	PART OF 55076-0228 (LT)	18.4 m ²	5	DANARDS ISLAND	IN FRONT OF LOT 16, SOUTH SIDE OF EAST LAKE	PART OF 55076-0229 (LT)	7.5 m ²
3	DANARDS ISLAND	IN FRONT OF LOT 16, SOUTH SIDE OF EAST LAKE	PART OF 55076-0228 (LT)	49.8 m ²	6	DANARDS ISLAND	IN FRONT OF LOT 16, SOUTH SIDE OF EAST LAKE	PART OF 55076-0229 (LT)	9.1 m ²

PARTS 1, 2 AND 3 - PART OF PIN 55076-0228 (LT)
PARTS 4, 5 AND 6 - PART OF PIN 55076-0229 (LT)
PARTS 1 AND 3 - SUBJECT TO AN EASEMENT IN PE158741
PARTS 4 AND 5 - SUBJECT TO AN EASEMENT IN PE81076, PE81077, PE81078, PE129597, PE134867, PE139482 & PE158741



LEGEND :

- DENOTES SURVEY MONUMENT FOUND
- " SURVEY MONUMENT PLANTED
- SIB " STANDARD IRON BAR
- SSIB " SHORT STANDARD IRON BAR
- IB " IRON BAR
- IBØ " ROUND IRON BAR
- (954) " S. W. ALLAN O.L.S.
- R " ROTATED TO GRID
- (m) " MEASURED
- (WIT) " WITNESS
- P1 " 47R-2056

SURVEYOR'S CERTIFICATE :

I CERTIFY THAT :

1. THIS SURVEY AND PLAN ARE CORRECT AND IN ACCORDANCE WITH THE SURVEYS ACT, THE SURVEYORS ACT AND THE LAND TITLES ACT AND THE REGULATIONS MADE UNDER THEM.
2. THE SURVEY WAS COMPLETED ON THE 18th DAY OF JUNE, 2024.

JUNE 27, 2024

KEITH WATSON
ONTARIO LAND SURVEYOR

THIS PLAN OF SURVEY RELATES TO AOLS
PLAN SUBMISSION FORM NUMBER V-77168.

218 CHURCH STREET
BELLEVILLE, ONTARIO

WATSON
LAND SURVEYORS Ltd.

K8N - 3C3
(613) 962 - 9521

CREW CHIEF : J. MORIN
DRAFTED BY : K. COLE

PROJECT N^o 14894-H-24