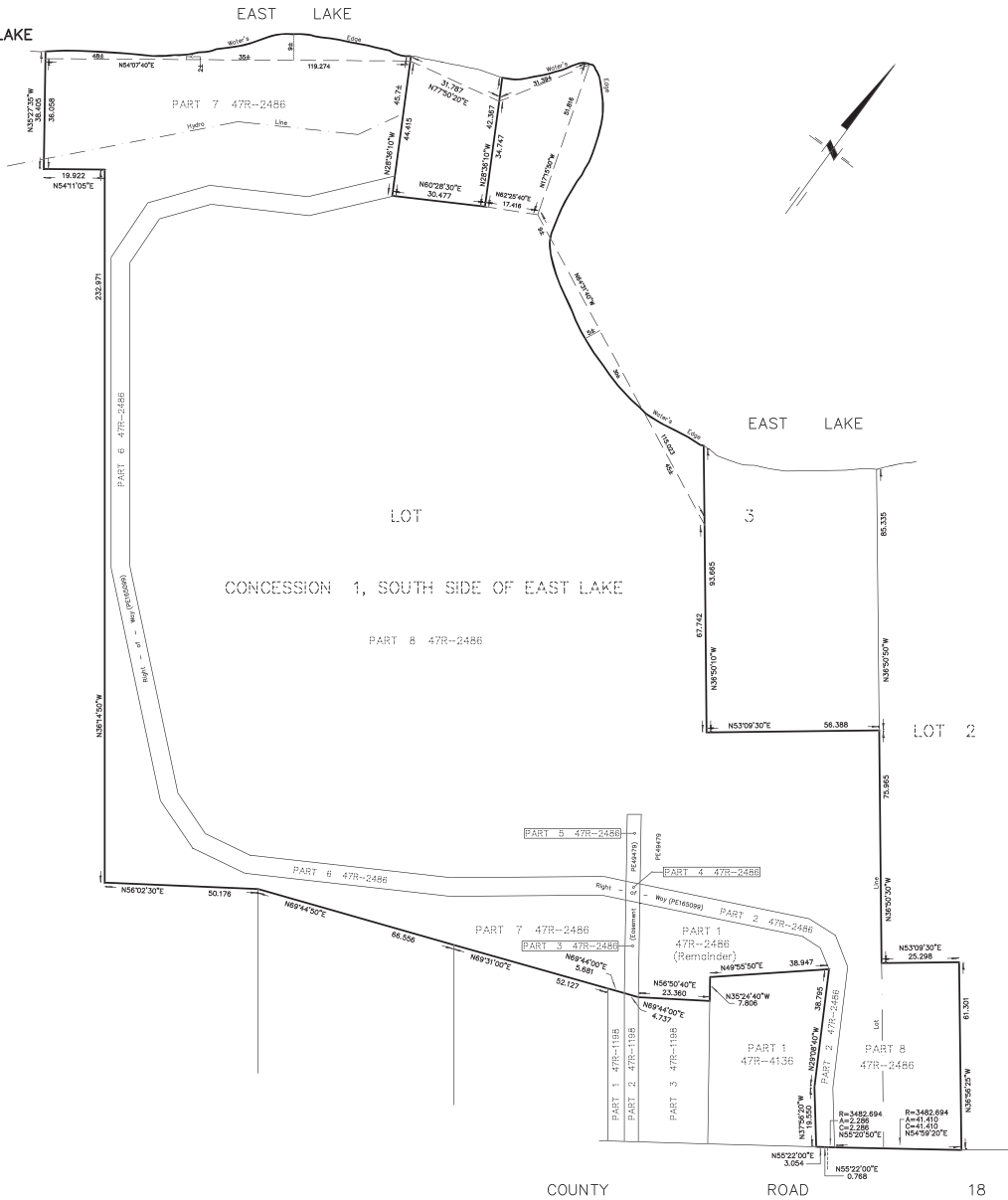


DRAFT PLAN
PART OF LOTS 2 AND 3
CONCESSION 1, SOUTH SIDE OF EAST LAKE
TOWNSHIP OF ATHOL
NOW IN THE MUNICIPALITY OF THE
COUNTY OF PRINCE EDWARD

METRIC SCALE 1 : 750

KEITH WATSON O.L.S.



METRIC :
 DISTANCES AND COORDINATES SHOWN ON THIS PLAN ARE IN METRES AND CAN BE CONVERTED TO FEET BY DIVIDING BY 0.3048.

218 CHURCH STREET
 BELLEVILLE, ONTARIO

WATSON
 LAND SURVEYORS Ltd.

KEB - 303
 (613) 962 - 9521

OCTOBER 23, 2023 PROJECT # 11390-2-19