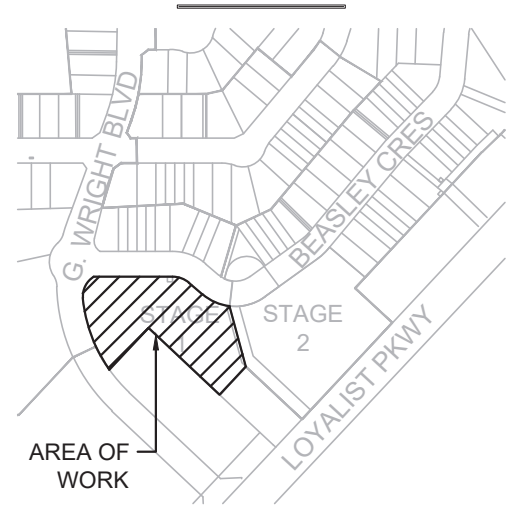


**KEY PLAN**

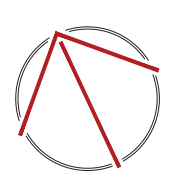


**PRELIMINARY  
NOT FOR  
CONSTRUCTION**

**REVISIONS**

NO.	ISSUED FOR	DATE
00	COORDINATION	AUG 1, 2024
01	CLIENT REVIEW	DEC 13, 2024
02	CLIENT REVIEW	MAY 27, 2025

**NORTH**



DESIGN	DL	DRAWN	DL
CHECKED	LN	REVIEWED	LN

**PROJECT**

WEST MEADOWS PH.2  
EXTERIOR LIGHTING

**ADDRESS**

LOYALIST & COUNTY RD. 4,  
PICTON, ONTARIO

**PROJECT NO.**

CE-5121d

**DRAWING TITLE**

ELECTRICAL  
SCHEDULES, DETAILS &  
PHOTOMETRIC SITE PLAN

**DRAWING NUMBER**

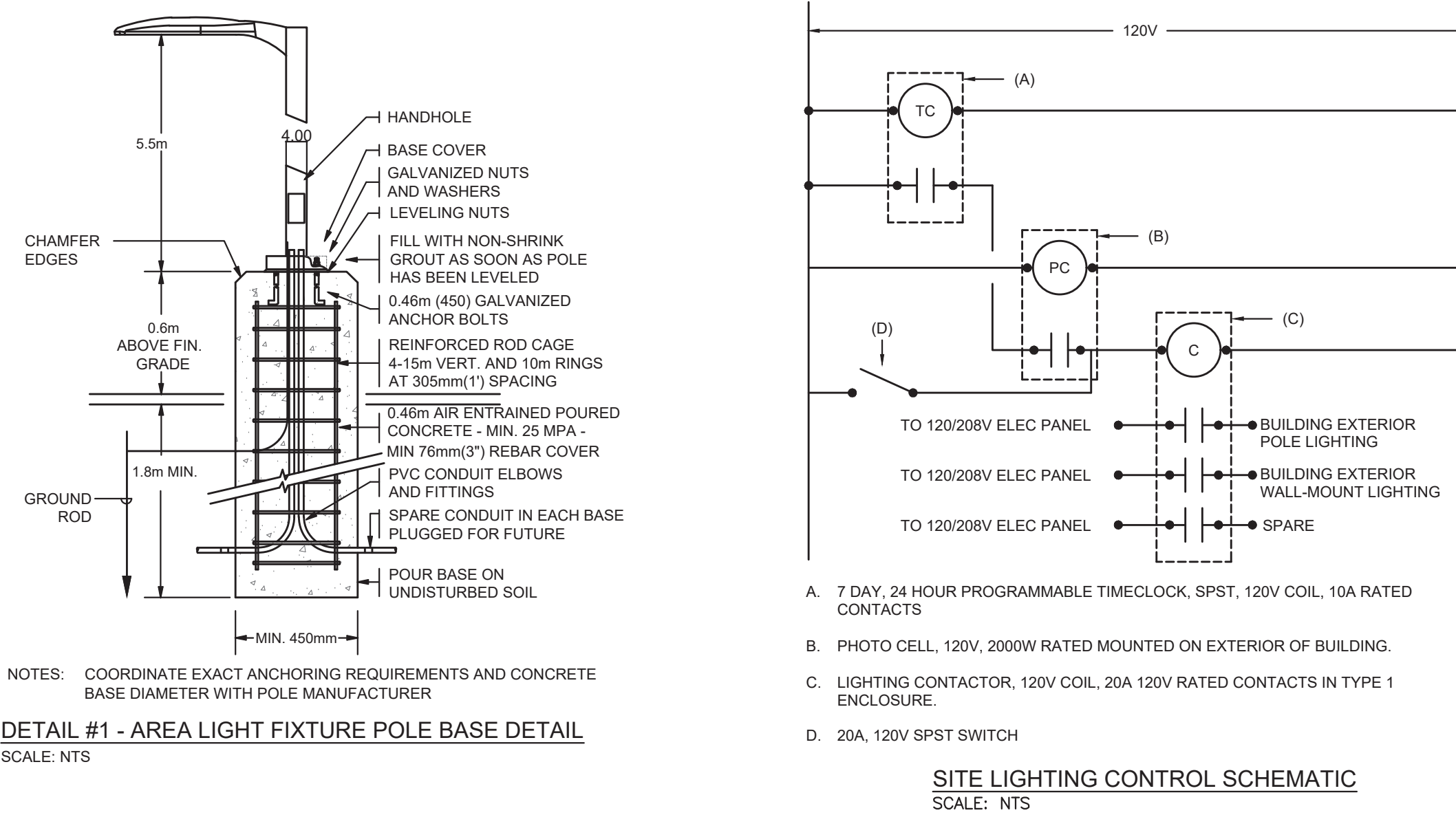
E0.0 OF 1

LIGHTING FIXTURES SCHEDULE				
FIXTURE TAG	DESCRIPTION AND MODEL SERIES	INPUT	LIGHT SOURCE	MOUNTING
ZA	DARK SKY COMPLIANT POLE MOUNTED LED AREA LIGHTING FIXTURE C/W MOTION SENSOR. OUTPUT TO 50% WHEN VACANCY IS DETECTED. PROVIDE LITHONIA POLE AND MOUNTING KIT. LITHONIA: DSX1 SERIES OR APPROVED EQUIVALENT	120V 124W	LED 11,557L 3000K 80CRI BLC4	POLE MOUNTED @ 6.1m (~20'-0")
ZB	DARK SKY COMPLIANT POLE MOUNTED LED AREA LIGHTING FIXTURE C/W MOTION SENSOR. OUTPUT TO 50% WHEN VACANCY IS DETECTED. PROVIDE LITHONIA POLE AND MOUNTING KIT. LITHONIA: DSX1 SERIES OR APPROVED EQUIVALENT	120V 102W	LED 9,692L 3000K 80CRI RCCO	POLE MOUNTED @ 6.1m (~20'-0")
ZC	DARK SKY COMPLIANT POLE MOUNTED LED AREA LIGHTING FIXTURE C/W MOTION SENSOR. OUTPUT TO 50% WHEN VACANCY IS DETECTED. PROVIDE LITHONIA POLE AND MOUNTING KIT. LITHONIA: DSX1 SERIES OR APPROVED EQUIVALENT	120V 102W	LED 9,692L 3000K 80CRI LCCO	POLE MOUNTED @ 6.1m (~20'-0")
ZD	DARK SKY COMPLIANT POLE MOUNTED LED AREA LIGHTING FIXTURE C/W MOTION SENSOR. OUTPUT TO 50% WHEN VACANCY IS DETECTED. PROVIDE LITHONIA POLE AND MOUNTING KIT. LITHONIA: DSX1 SERIES OR APPROVED EQUIVALENT	120V 124W	LED 16,324L 3000K 80CRI TSW	POLE MOUNTED @ 6.1m (~20'-0")
YA	DARK SKY COMPLIANT EXTERIOR LED WALL LUMINAIRE C/W PHOTOCELL. LITHONIA: WDG2 SERIES OR APPROVED EQUIVALENT	120V 19W	LED 1,963L 3000K 80CRI T2M	WALL MOUNTED @ 2.3m (~7'-6")
YB	DARK SKY COMPLIANT EXTERIOR LED WALL LUMINAIRE C/W PHOTOCELL. LITHONIA: WDG2 SERIES OR APPROVED EQUIVALENT	120V 47W	LED 3,978L 3000K 80CRI T4M	WALL MOUNTED @ 2.3m (~7'-6")
YC	DARK SKY COMPLIANT EXTERIOR LED WALL LUMINAIRE C/W PHOTOCELL. LITHONIA: WDG2 SERIES OR APPROVED EQUIVALENT	120V 19W	LED 1,934L 3000K 80CRI TFTM	WALL MOUNTED @ 2.3m (~7'-6")

NOTES:  
 • PROVIDE ALL NECESSARY MOUNTING HARDWARE FOR A COMPLETE INSTALLATION.  
 • DISTRIBUTION TYPE(S) COMMENTS:  
 • BLC4 DENOTES "TYPE 4 WITH BACK LIGHT CUTOFF CONTROL OPTICS"  
 • RCCO DENOTES "RIGHT CUTOFF CONTROL OPTICS"  
 • LCCO DENOTES "LEFT CUTOFF CONTROL OPTICS"  
 • TSW DENOTES "TYPE 5 WIDE DISTRIBUTION OPTICS"  
 • T2M DENOTES "TYPE 2 MEDIUM"  
 • T4M DENOTES "TYPE 4 MEDIUM"  
 • TFTM DENOTES "TYPE 'FORWARD THROW' MEDIUM"

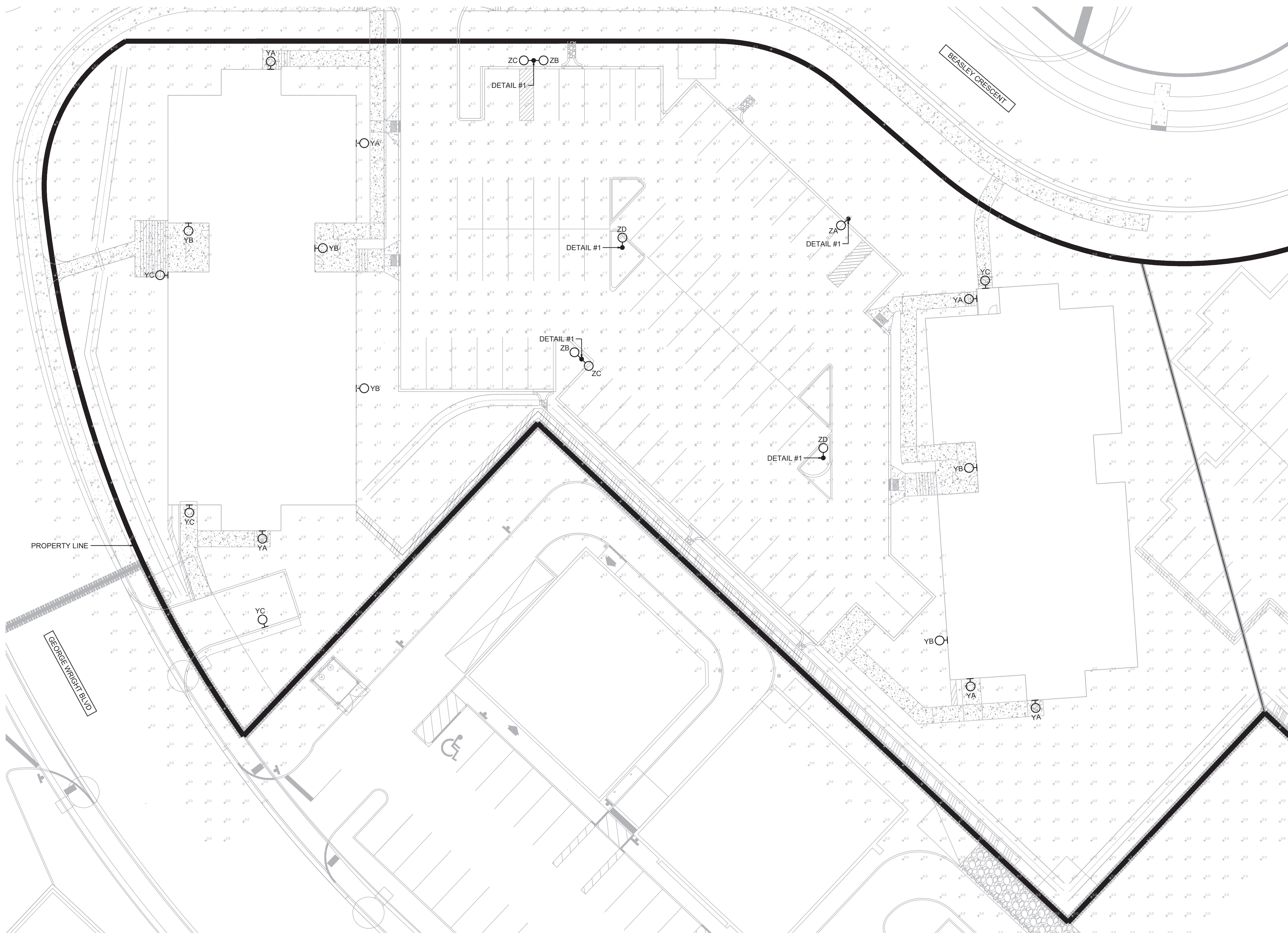
PHOTOMETRIC ILLUMINANCE STATISTICS						
LOCATION	SYMBOL	Lavg (fc)	Lmax (fc)	Lmin (fc)	Lmax/Lmin (fc)	Lavg/Lmin (fc)
DRIVE AREA	✕	2.4	5.6	0.3	18.7	8.0
PARKING	◇	2.6	5.7	0.4	14.3	6.6
WALKING PATHS	✕	2.6	7.2	0.3	24.0	8.8

LIGHTING LEGEND	
SYMBOL	DESCRIPTION
○	POLE LIGHT
○	WALL MOUNT LIGHT FIXTURE



NOTES: COORDINATE EXACT ANCHORING REQUIREMENTS AND CONCRETE BASE DIAMETER WITH POLE MANUFACTURER

- A. 7 DAY, 24 HOUR PROGRAMMABLE TIMECLOCK. SPST, 120V COIL, 10A RATED CONTACTS
- B. PHOTO CELL, 120V, 2000W RATED MOUNTED ON EXTERIOR OF BUILDING.
- C. LIGHTING CONTACTOR, 120V COIL, 20A 120V RATED CONTACTS IN TYPE 1 ENCLOSURE.
- D. 20A, 120V SPST SWITCH



**SITE PLAN - PHOTOMETRICS**

SCALE: 1:250