

Do not scale drawings. Report any discrepancies to Hallex Engineering Ltd. before proceeding.

This drawing must be signed and sealed by the Engineer prior to use in construction or submission for building permit.

All construction shall be in accordance with latest edition of the Ontario Building Code and all applicable Ontario regulations.

No part of this drawing including details, calculations or schedules may be reproduced in any form, either in part or whole, without the prior written consent of Hallex Engineering Ltd.

HALLEX ENGINEERING LTD.

745 South Service Rd. Unit 301A,
Stoney Creek, ON L8E 5Z2
Tel: 905-861-4016

4999 Victoria Ave.,
Niagara Falls, ON L2E 4C9
Tel: 905-387-4015 Fax: 905-383-1105

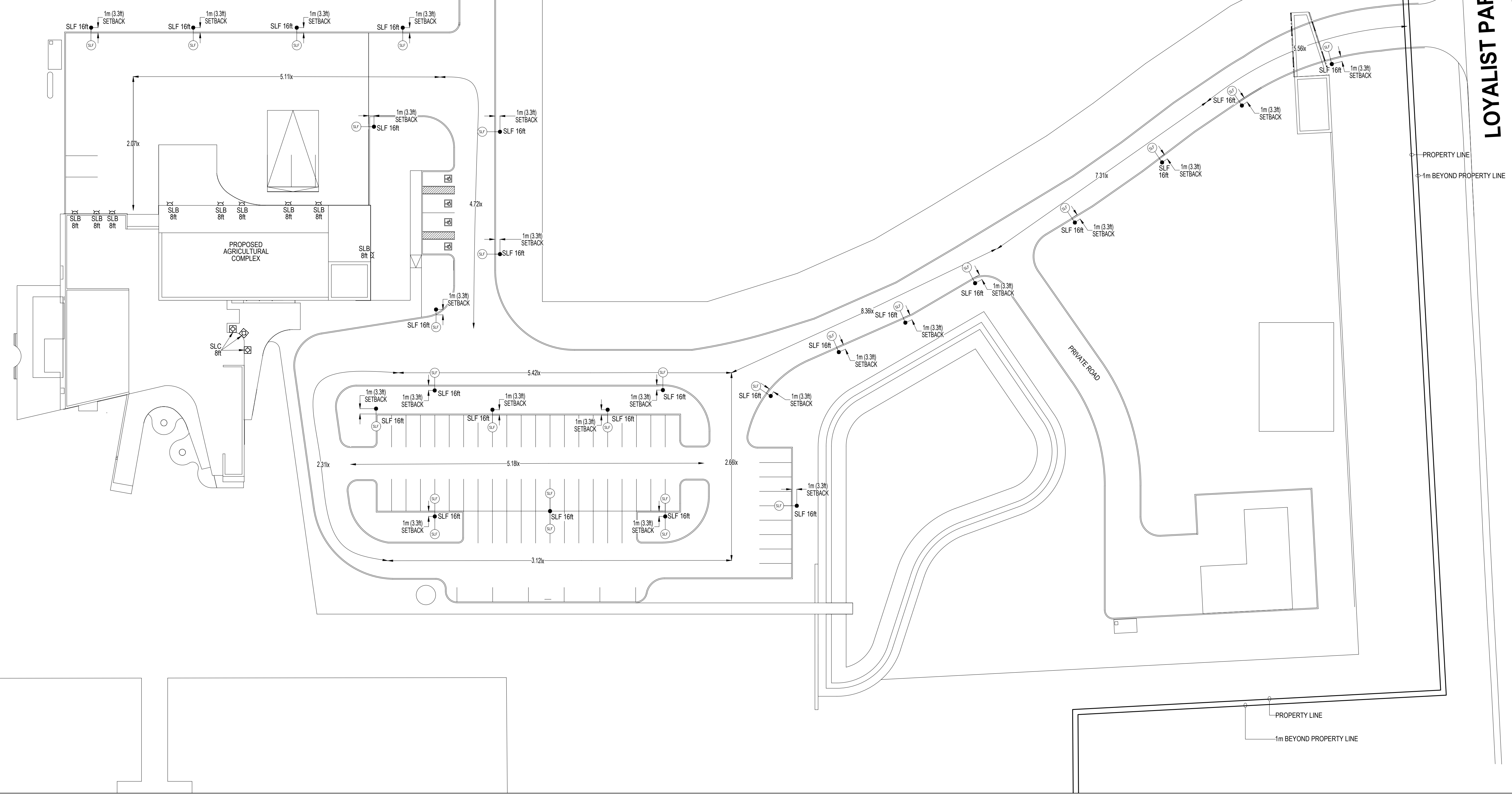
REV.	ISSUED FOR:	YYYYMMDD
0	SITE PLAN APPROVAL	2023/07/13
1	SITE PLAN APPROVAL	2024/11/29
2	SITE PLAN APPROVAL	2025/06/05
3	SITE PLAN APPROVAL	2025/06/10

CLIENT:
GIANNI DEL DEGAN
ROYALCLIFF HOMES
100 REGINA ROAD, UNIT 3
WOODBRIDGE, ON.
L4L 8M7

PROJECT:
VOLTA ESTATE WINERY
HAMLET OF ROSEHALL,
PRINCE EDWARD COUNTY, ON.

SHEET TITLE:
AVERAGE ILLUMINATION LEVELS

JOB NUMBER:	230602
DATE:	JUNE 6, 2023
DRAWN BY:	BBa
DESIGNED BY:	MW
CHECKED BY:	MW
SCALE:	AS SHOWN
DWG.	REV.
SL1	3



AVERAGE ILLUMINATION LEVELS
SCALE: 1:400

ITEM	SYMBOL	LAMP TYPE	WATTS	DESCRIPTION
SLA		-	-	FIXTURE DELETED.
SLB		LED	8	BELLHOP 125 OUTDOOR WALL MOUNT DOME FIXTURE, 3000K, F03C31AU30
SLC		LED	12	FLAUTA SPIGA 3 LINEAR WALL MOUNT FIXTURE, 4000K, F019843D033
SLD		-	-	FIXTURE DELETED.
SLE		-	-	FIXTURE DELETED.
SLF		LED	24	BEGA POLE TOP FIXTURE, 4000K, #99407, 88 = BACK-TO-BACK CONFIGURATION

- ALL GRID VALUES SHOWN ARE LIGHT LEVELS AT GROUND LEVEL AND ARE MEASURED IN LUX (lx).
- ALL LIGHT LEVELS SHOWN ARE THE RESULT OF LIGHTS TO THE WATTAGE & HEIGHTS SHOWN ON THE DRAWINGS.
- PHOTOMETRIC DATA USED AS INPUT FOR THESE CALCULATIONS IS BASED ON ESTABLISHED IES PROCEDURES AND PUBLISHED LAMP RATINGS. FIELD PERFORMANCE WILL DEPEND ON ACTUAL LAMP, BALLAST, ELECTRICAL, AND SITE CHARACTERISTICS.
- ALL POLE-BASED FIXTURES TO BE MOUNTED AT THE HEIGHT SHOWN ABOVE FINISHED GRADE AND ARE TO INCLUDE ANY POLEBASE COMBINATIONS.
- ALL FIXTURES ARE TO BE SETBACK 1m FROM THE ROADWAY CURB LINES. WHERE FIXTURES ARE MOUNTED ADJACENT TO PARKING AREAS, POLES ARE TO BE IN-LINE WITH PAINTED PARKING LINES WHENEVER POSSIBLE.
- UTILIZE SHIELDS AS REQUIRED TO PREVENT EXCESSIVE LIGHTING TRESPASS ACROSS PROPERTY LINES.
- ALTERNATE SITE LIGHTING FIXTURES WILL NOT BE APPROVED UNLESS ENGINEER SEALED PHOTOMETRICS CAN BE PROVIDED TO MATCH THOSE PROVIDED BY ENGINEER.
- PHOTOMETRIC GRID IS BASED ON 5m x 5m SPACING.
- LIGHT LOSS FACTOR USED: 0.85



FIXTURE IMAGE "SLB"



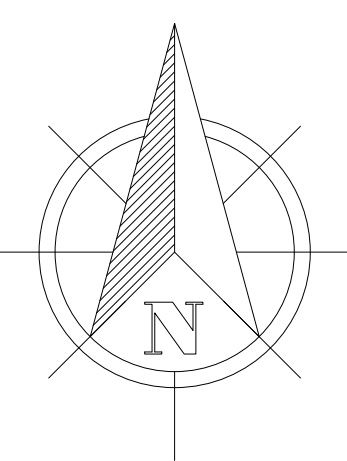
FIXTURE IMAGE "SLC"



FIXTURE IMAGE "SLF"

DRAWING LIST

SL1	AVERAGE ILLUMINATION LEVELS
SL2	ILLUMINATION LEVELS



Do not scale drawings. Report any discrepancies to Hallex Engineering Ltd. before proceeding.
 This drawing must be signed and sealed by the Engineer prior to use in construction or submission for building permit.
 All construction shall be in accordance with latest edition of the Ontario Building Code and all applicable Ontario regulations.
 No part of this drawing including details, calculations or schedules may be reproduced in any form, either in part or whole, without the prior written consent of Hallex Engineering Ltd.

HALLEX ENGINEERING LTD.
 4999 Victoria Ave.,
 Niagara Falls, ON L2E 4C9
 Tel: 905-357-4015 Fax: 905-353-1105

745 South Service Rd. Unit 301A,
 Stoney Creek, ON L2E 5Z2
 Tel: 905-961-4016

REV.	ISSUED FOR:	YYYYMMDD
0	SITE PLAN APPROVAL	2023/07/13
1	SITE PLAN APPROVAL	2024/11/29
2	SITE PLAN APPROVAL	2025/06/05
3	SITE PLAN APPROVAL	2025/06/10

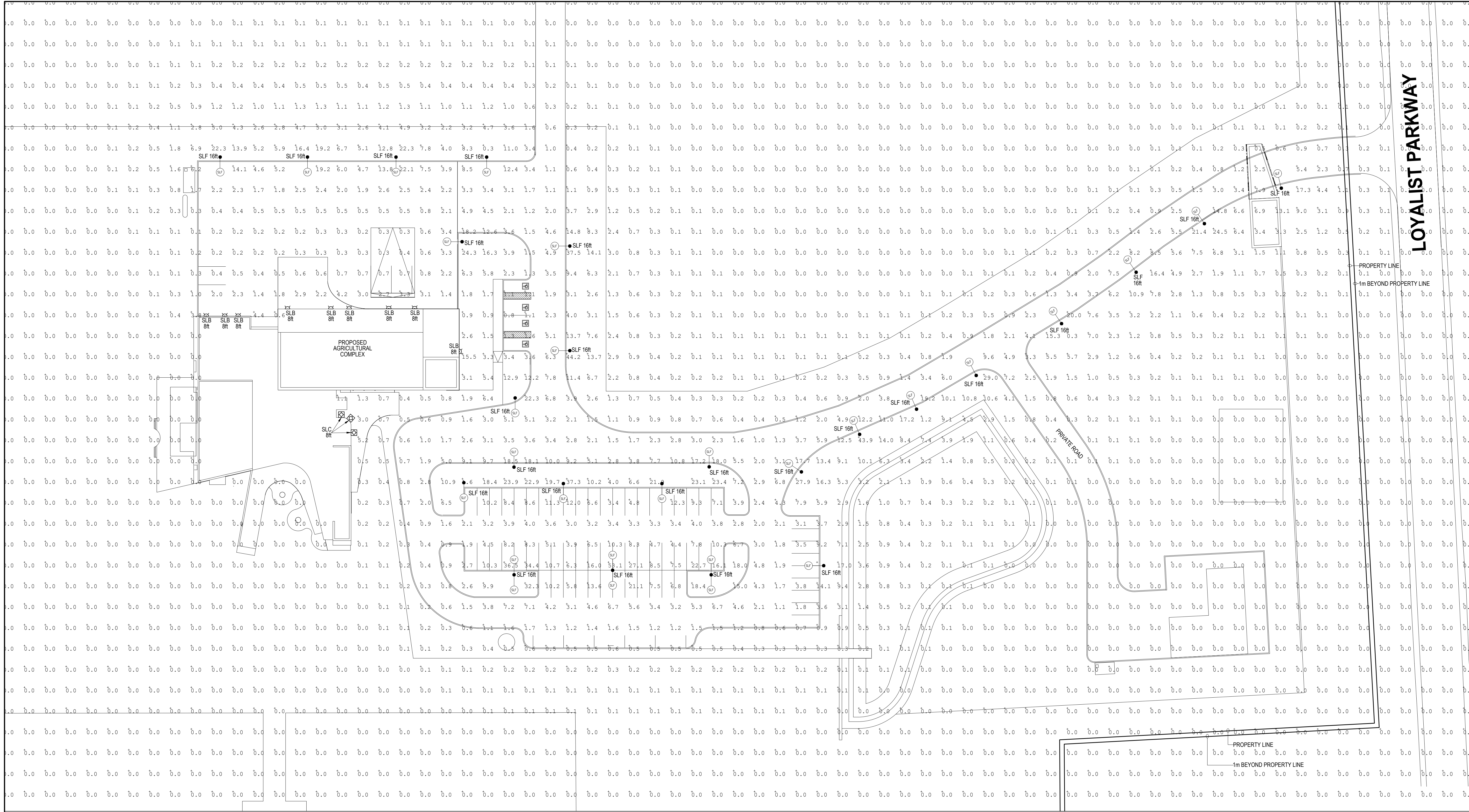
CLIENT:
 GIANNI DEL DEGAN
 ROYALCLIFF HOMES
 100 REGINA ROAD, UNIT 3
 WOODBRIDGE, ON.
 L4L 8M7

PROJECT:
 VOLTA ESTATE WINERY
 HAMLET OF ROSEHALL,
 PRINCE EDWARD COUNTY, ON.

SHEET TITLE:
 ILLUMINATION LEVELS

JOB NUMBER:	230602
DATE:	JUNE 6, 2023
DRAWN BY:	BBa
DESIGNED BY:	MW
CHECKED BY:	MW
SCALE:	AS SHOWN
DWG.	REV.
SL2	3

LOYALIST PARKWAY



ILLUMINATION LEVELS

SCALE: 1:400

LIGHT SCHEDULE				
ITEM	SYMBOL	LAMP TYPE	WATTS	DESCRIPTION
SLA	(SLA)	-	-	FIXTURE DELETED.
SLB	(SLB)	LED	8	BELLHOP 12S OUTDOOR WALL MOUNT DOME FIXTURE, 3000K, F03C31AU30
SLC	(SLC)	LED	12	FLAUTA SPIGA 3 LINEAR WALL MOUNT FIXTURE, 4000K, F01984D033
SLD	(SLD)	-	-	FIXTURE DELETED.
SLE	(SLE)	-	-	FIXTURE DELETED.
SLF	(SLF)	LED	24	BEGA POLE TOP FIXTURE, 4000K, #99407_BB = BACK-TO-BACK CONFIGURATION

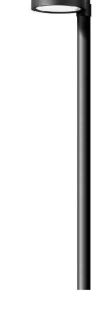
- ALL GRID VALUES SHOWN ARE LIGHT LEVELS AT GROUND LEVEL AND ARE MEASURED IN LUX (lx).
- ALL LIGHT LEVELS SHOWN ARE THE RESULT OF LIGHTS TO THE WATTAGE & HEIGHTS SHOWN ON THE DRAWINGS.
- PHOTOMETRIC DATA USED AS INPUT FOR THESE CALCULATIONS IS BASED ON ESTABLISHED IES PROCEDURES AND PUBLISHED LAMP RATINGS. FIELD PERFORMANCE WILL DEPEND ON ACTUAL LAMP, BALLAST, ELECTRICAL, AND SITE CHARACTERISTICS.
- ALL POLE-BASED FIXTURES TO BE MOUNTED AT THE HEIGHT SHOWN ABOVE FINISHED GRADE AND ARE TO INCLUDE ANY POLE/BASE COMBINATIONS.
- ALL FIXTURES ARE TO BE SETBACK 1m FROM THE ROADWAY CURB LINES. WHERE FIXTURES ARE MOUNTED ADJACENT TO PARKING AREAS, POLES ARE TO BE IN-LINE WITH PAINTED PARKING LINES WHENEVER POSSIBLE.
- UTILIZE SHIELDS AS REQUIRED TO PREVENT EXCESSIVE LIGHTING TRESPASS ACROSS PROPERTY LINES.
- ALTERNATE SITE LIGHTING FIXTURES WILL NOT BE APPROVED UNLESS ENGINEER SEALED PHOTOMETRICS CAN BE PROVIDED TO MATCH THOSE PROVIDED BY ENGINEER.
- PHOTOMETRIC GRID IS BASED ON 5m x 5m SPACING.
- LIGHT LOSS FACTOR USED: 0.85



FIXTURE IMAGE "SLB"



FIXTURE IMAGE "SLC"



FIXTURE IMAGE "SLF"

DRAWING LIST

SL1	AVERAGE ILLUMINATION LEVELS
SL2	ILLUMINATION LEVELS