

NOTES

1. ALL PROPOSED PAVED SURFACES NOT ABOVE GARAGE SLAB ARE SUPPORTED BY SUBBASE MATERIALS DESCRIBED IN THE DETAILS - WITH A LAYER OF EITHER GRANULAR 'A' OR HIGH PERFORMANCE BEDDING. NO LIMESTONE SCREENS OR CRUSHER RUN LIMESTONE ARE USED.
2. ALL UNIT PAVERS IN THE CITY RIGHT-OF-WAY ARE TO BE CONSTRUCTED ON A CONCRETE BASE AS PER CITY DETAIL T-561.030.1

LEGEND

- [Pattern] UNIT PAVING
- [Pattern] PLANTING BED
- [Symbol] PROPOSED DECIDUOUS TREE
- [Symbol] PROPOSED CONIFEROUS TREE
- [Symbol] PROPOSED MULTI-STEM TREE
- [Line] PROPERTY LINE

ISSUE

5	2025-06-12	RE-ISSUED FOR SPA
4	2025-02-20	RE-ISSUED FOR SPA
3	2024-11-22	RE-ISSUED FOR SPA
2	2024-08-26	ISSUED FOR SPA
1	2023-07-31	ISSUED FOR ZBA / SPA



JRS

148 Kernwood Avenue
Toronto, ON M6C 2S3

office@rstudio.ca
rstudio.ca

+1 416 656 6665

VOLTA ESTATE WINERY

17945 LOYALIST PARKWAY, ROSEHALL, PRINCE EDWARD COUNTY

LANDSCAPE LAYOUT PLAN

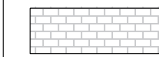

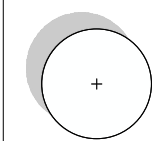
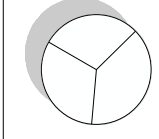
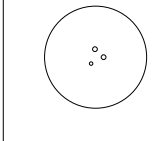
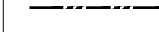
SCALE: AS NOTED
 DRAWN: NG
 CHECKED: WS
 PROJECT NUMBER: 22-057
 DRAWING DATE: 2025-02-20

L100

NOTES

1. ALL PROPOSED PAVED SURFACES NOT ABOVE GARAGE SLAB ARE SUPPORTED BY SUBBASE MATERIALS DESCRIBED IN THE DETAILS - WITH A LAYER OF EITHER GRANULAR 'A' OR HIGH PERFORMANCE BEDDING. NO LIMESTONE SCREENS OR CRUSHER RUN LIMESTONE ARE USED.
2. ALL UNIT PAVERS IN THE CITY RIGHT-OF-WAY ARE TO BE CONSTRUCTED ON A CONCRETE BASE AS PER CITY DETAIL T-561.030.1

LEGEND

-  UNIT PAVING
-  PLANTING BED
-  PROPOSED DECIDUOUS TREE
-  PROPOSED CONIFEROUS TREE
-  PROPOSED MULTI-STEM TREE
-  PROPERTY LINE

ISSUE

- 2 2025-06-12 RE-ISSUED FOR SPA
- 1 2025-02-20 ISSUED FOR SPA



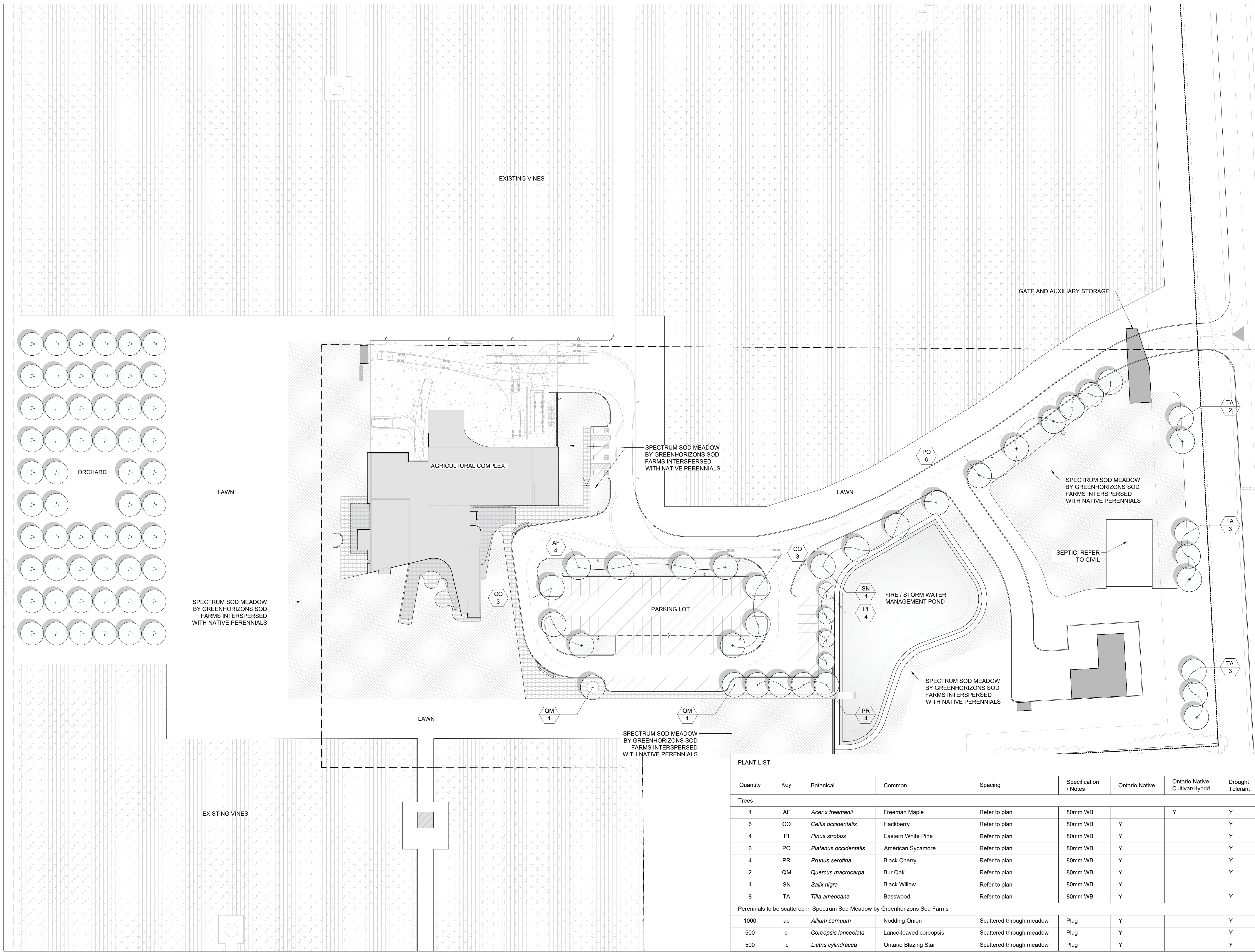
VOLTA ESTATE WINERY

17945 LOYALIST PARKWAY, ROSEHALL, PRINCE EDWARD COUNTY

PLANTING PLAN

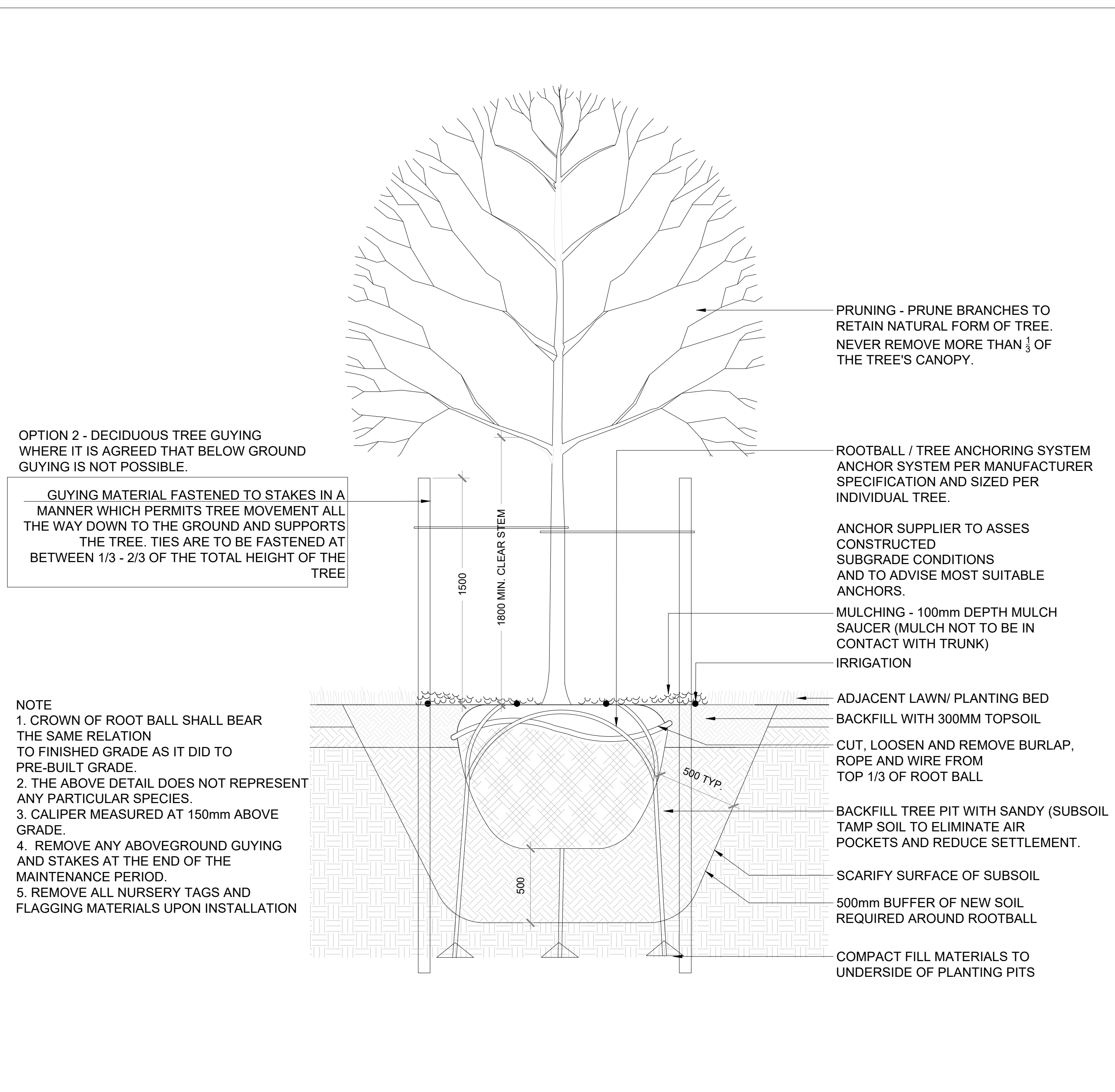
SCALE: AS NOTED
 DRAWN: NG
 CHECKED: WS
 PROJECT NUMBER: 22-057
 DRAWING DATE: 2025-02-20

L300

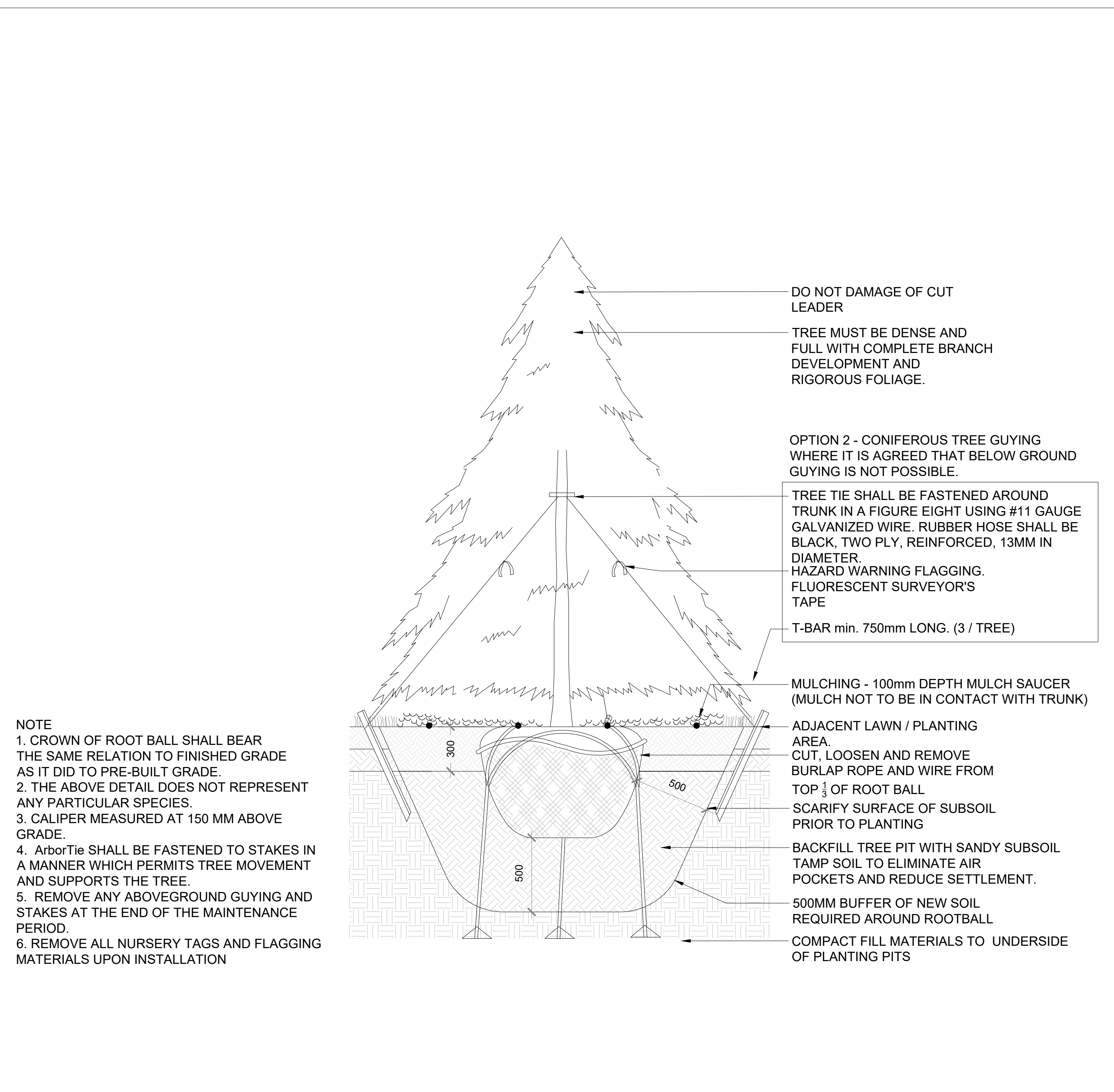


PLANT LIST

Quantity	Key	Botanical	Common	Spacing	Specification / Notes	Ontario Native	Ontario Native Cultivar/Hybrid	Drought Tolerant
Trees								
4	AF	<i>Acer x freemanii</i>	Freeman Maple	Refer to plan	80mm WB		Y	Y
6	CO	<i>Celtis occidentalis</i>	Hackberry	Refer to plan	80mm WB	Y		Y
4	PI	<i>Pinus strobus</i>	Eastern White Pine	Refer to plan	80mm WB	Y		Y
6	PO	<i>Platanus occidentalis</i>	American Sycamore	Refer to plan	80mm WB	Y		Y
4	PR	<i>Prunus serotina</i>	Black Cherry	Refer to plan	80mm WB	Y		Y
2	QM	<i>Quercus macrocarpa</i>	Bur Oak	Refer to plan	80mm WB	Y		Y
4	SN	<i>Salix nigra</i>	Black Willow	Refer to plan	80mm WB	Y		Y
8	TA	<i>Tilia americana</i>	Basswood	Refer to plan	80mm WB	Y		Y
Perennials to be scattered in Spectrum Sod Meadow by Greenhorizons Sod Farms								
1000	ac	<i>Allium cernuum</i>	Nodding Onion	Scattered through meadow	Plug	Y		Y
500	cl	<i>Coreopsis lanceolata</i>	Lance-leaved coreopsis	Scattered through meadow	Plug	Y		Y
500	lc	<i>Liatris cylindracea</i>	Ontario Blazing Star	Scattered through meadow	Plug	Y		Y



1 DECIDUOUS PLANTING
SCALE: NTS



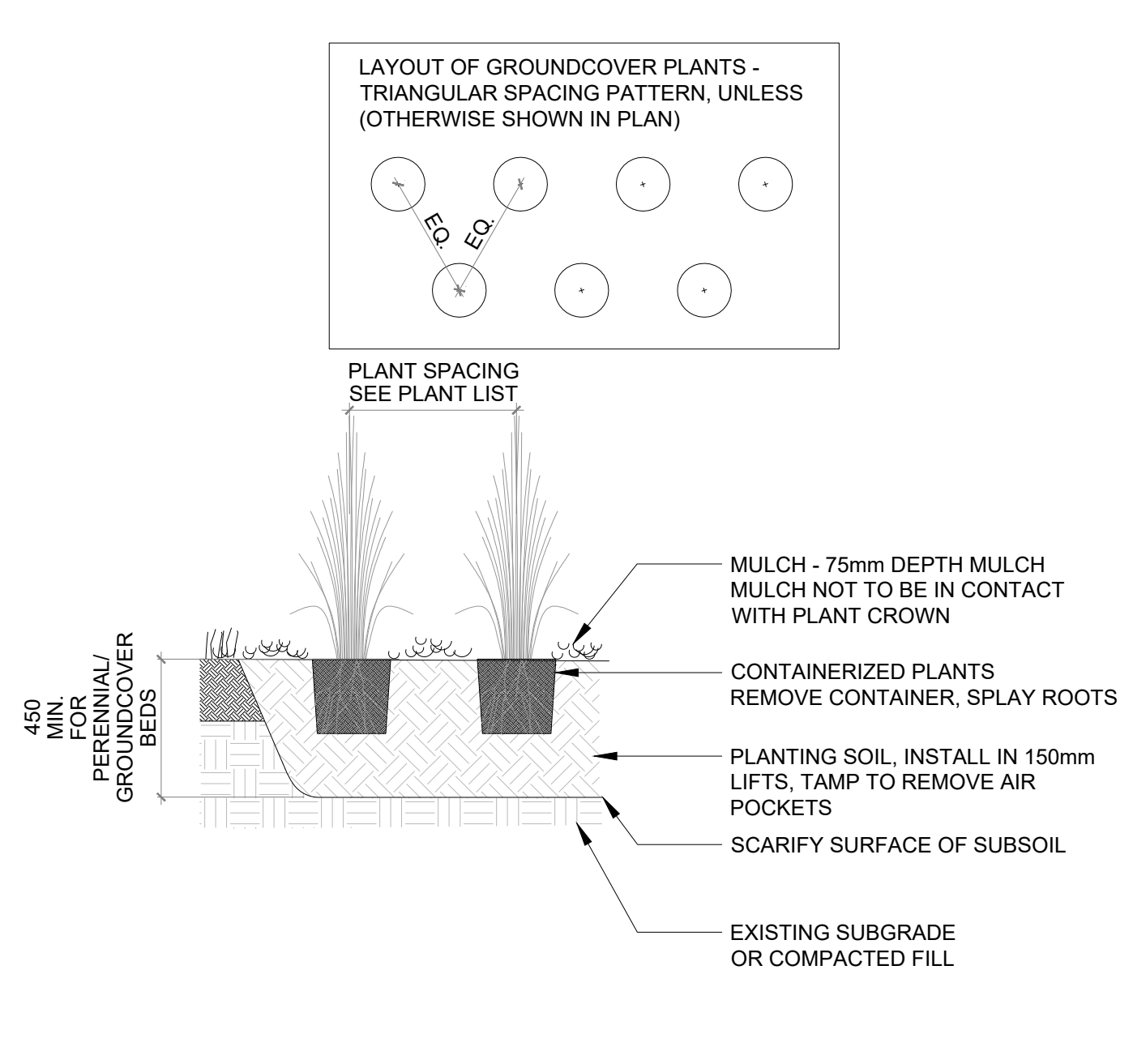
2 CONIFEROUS PLANTING
SCALE: NTS

NOTES

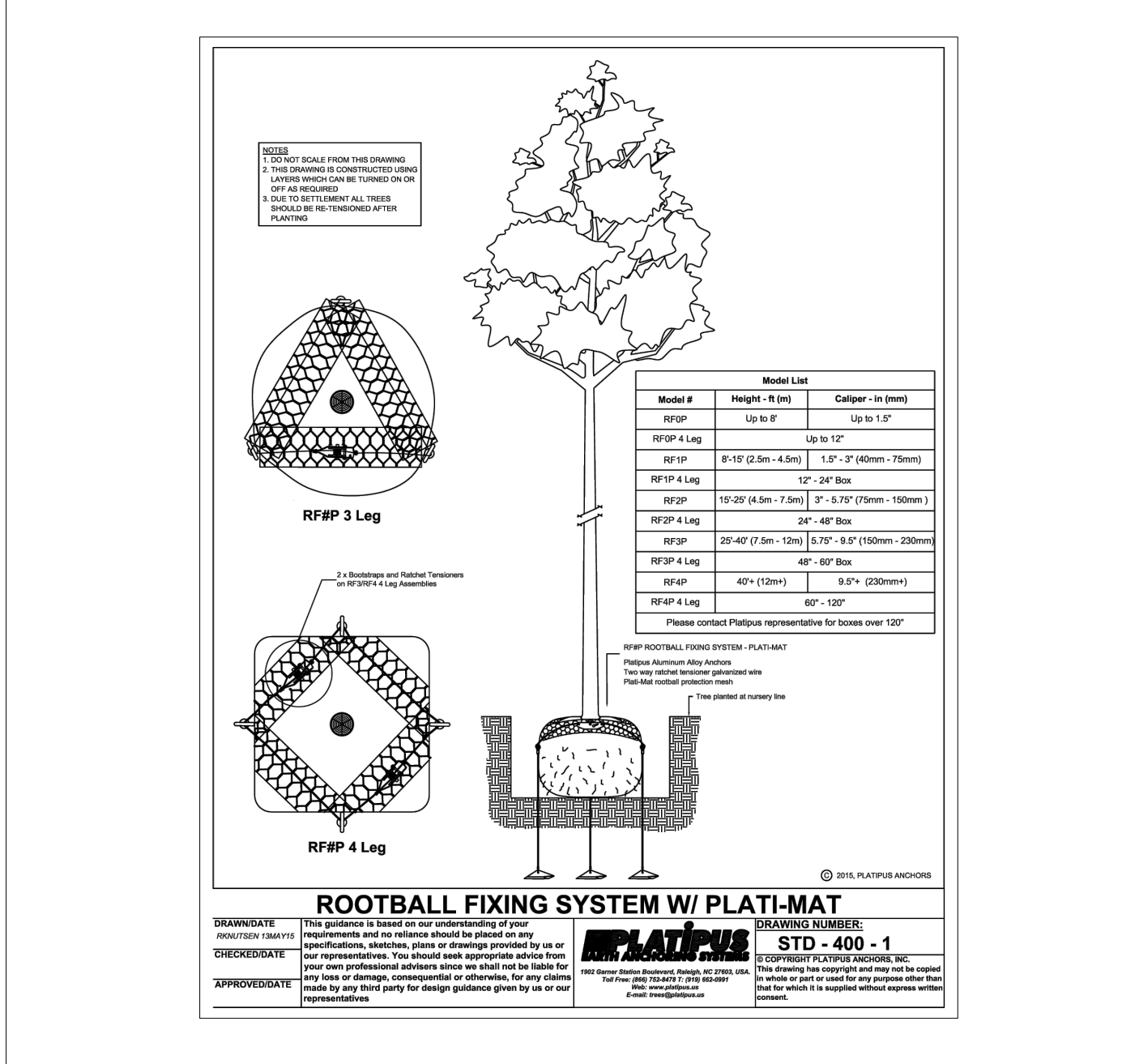
- ALL PROPOSED PAVED SURFACES NOT ABOVE GARAGE SLAB ARE SUPPORTED BY SUBBASE MATERIALS DESCRIBED IN THE DETAILS - WITH A LAYER OF EITHER GRANULAR 'A' OR HIGH PERFORMANCE BEDDING. NO LIMESTONE SCREENS OR CRUSHER RUN LIMESTONE ARE USED.
- ALL UNIT PAVERS IN THE CITY RIGHT-OF-WAY ARE TO BE CONSTRUCTED ON A CONCRETE BASE AS PER CITY DETAIL T-561.030.1

ISSUE

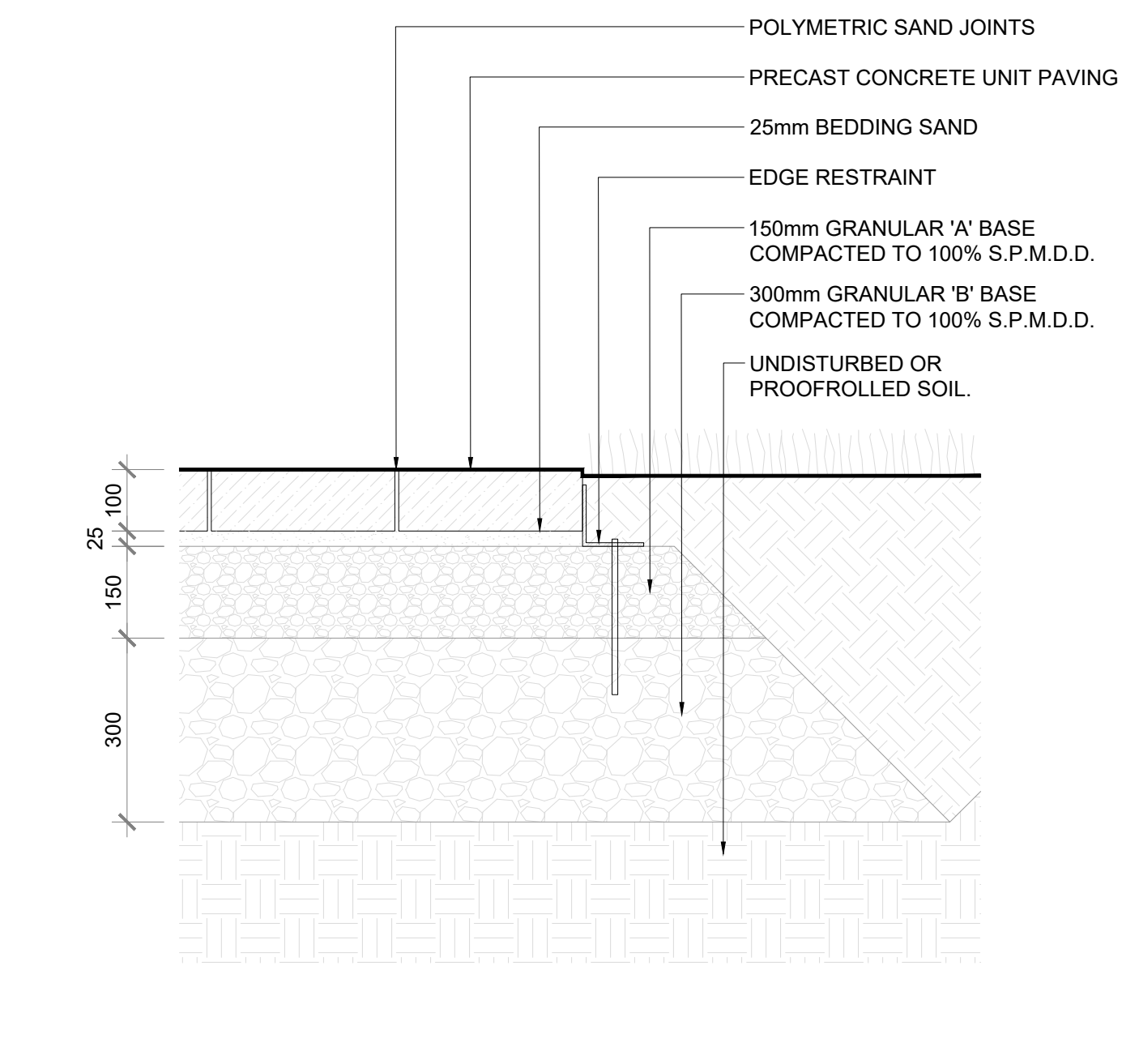
2 2025-06-12 RE-ISSUED FOR SPA
1 2025-02-20 ISSUED FOR SPA



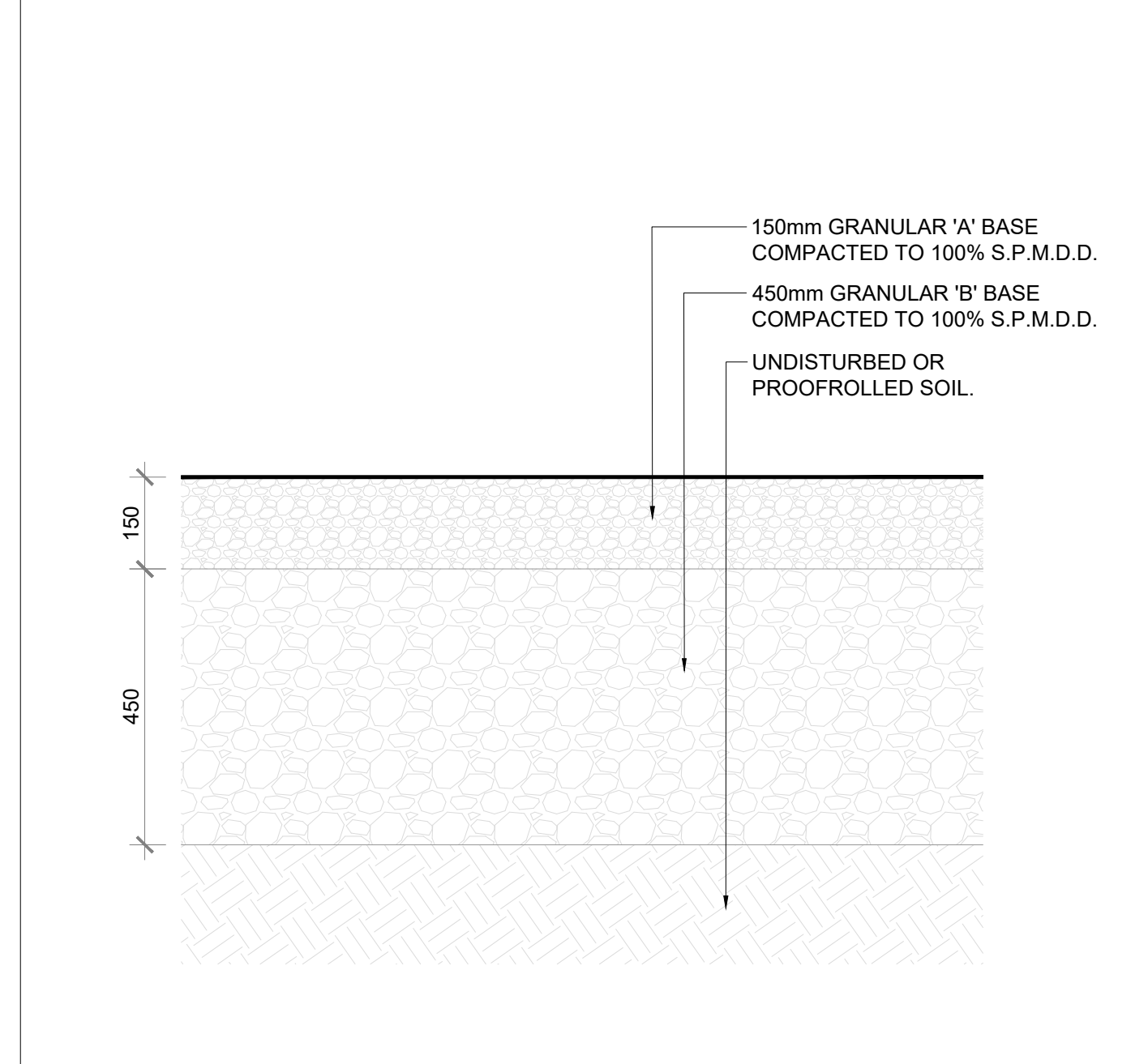
3 HERBACEOUS PLANTING
SCALE: 1 : 20



4 ROOTBALL FIXING SYSTEM
SCALE: NTS



5 PEDESTRIAN UNIT PAVING
SCALE: 1 : 10



6 HEAVY DUTY GRAVEL ROAD
SCALE: 1 : 10

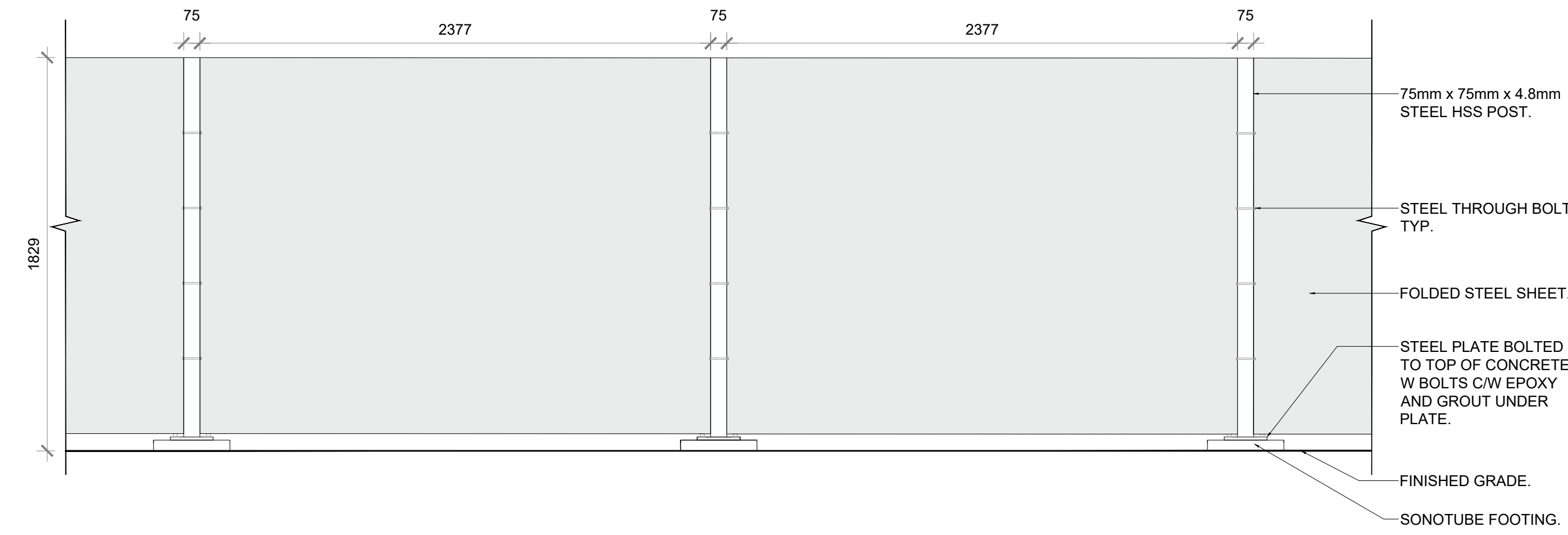
VOLTA ESTATE WINERY
17945 LOYALIST PARKWAY, ROSEHALL, PRINCE EDWARD COUNTY

LANDSCAPE DETAILS

SCALE: AS NOTED
DRAWN: NG
CHECKED: WS
PROJECT NUMBER: 22-057
DRAWING DATE: 2025-02-20

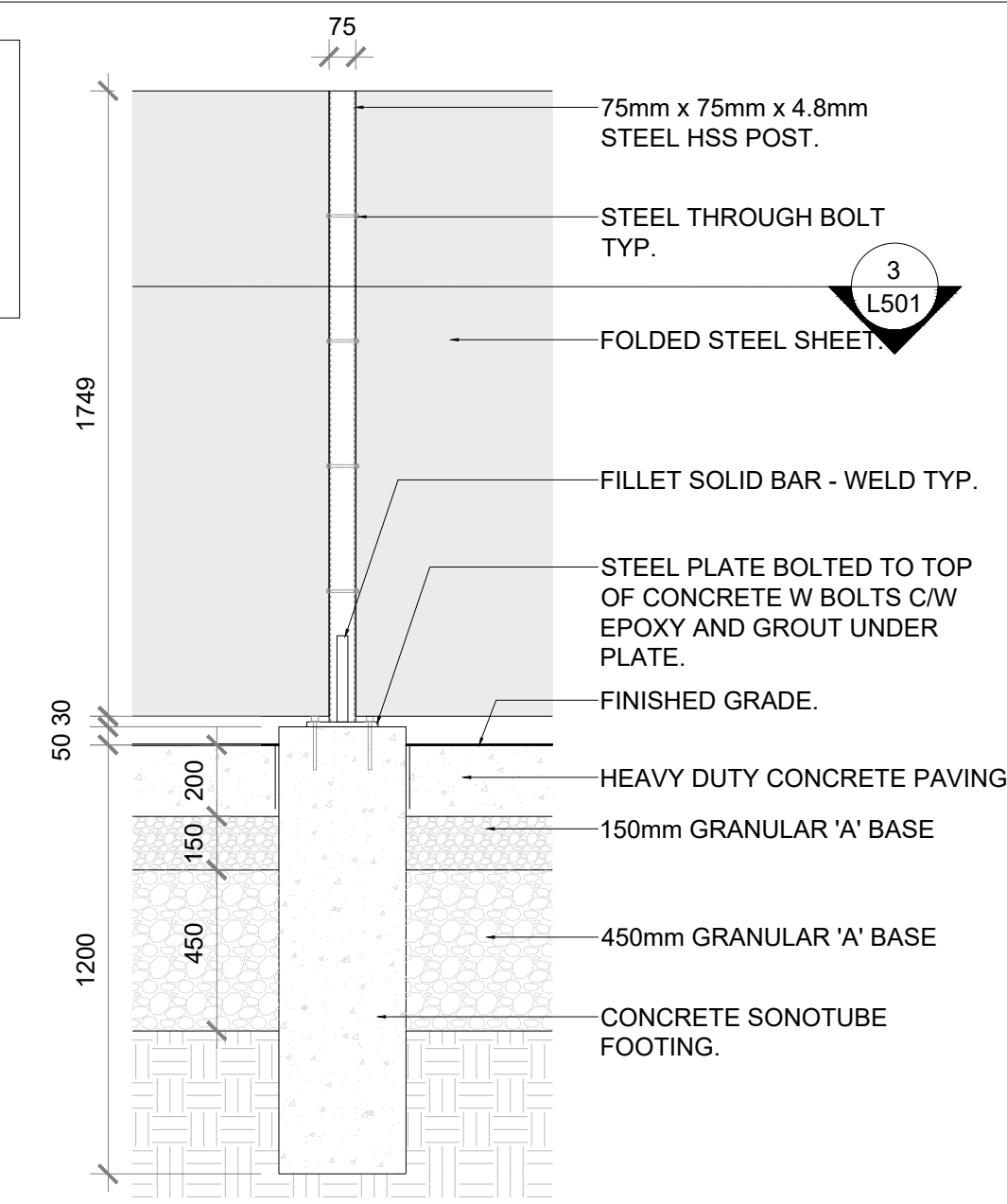
L500

NOTE: DETAILS PROVIDED FOR ILLUSTRATIVE PURPOSES. ENGINEERED DRAWINGS TO BE PROVIDED FOR PERMIT.



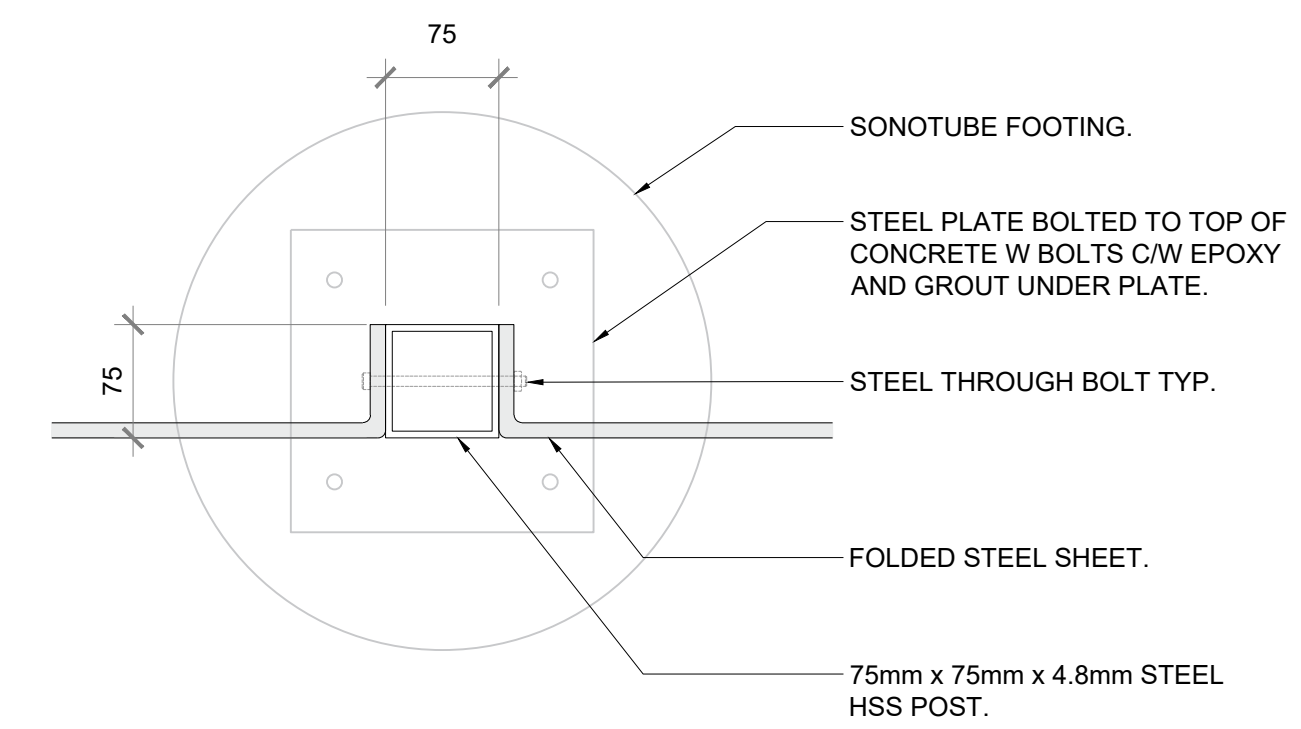
1 GARBAGE ENCLOSURE ELEVATION
SCALE: 1 : 20

NOTE: DETAILS PROVIDED FOR ILLUSTRATIVE PURPOSES. ENGINEERED DRAWINGS TO BE PROVIDED FOR PERMIT.



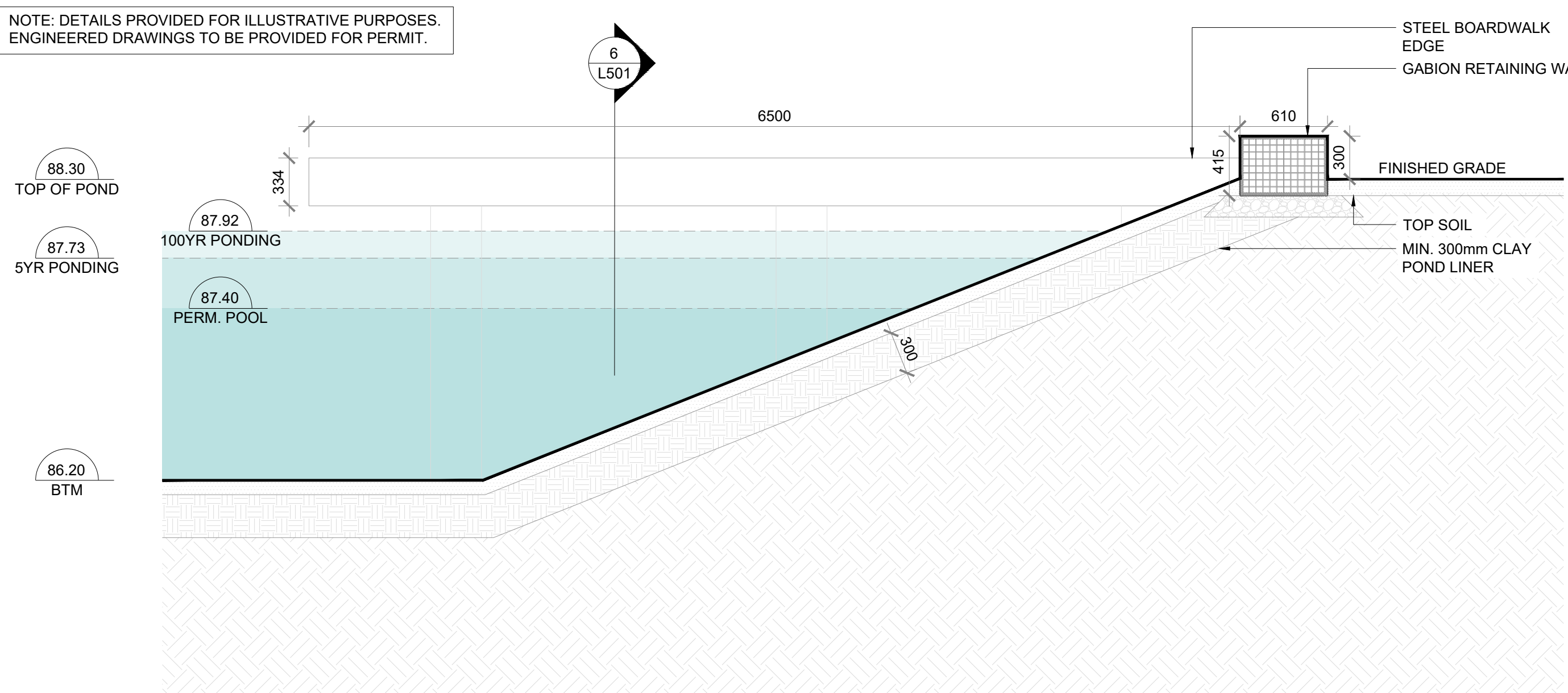
2 GARBAGE ENCLOSURE SECTION ELEVATION
SCALE: 1 : 20

NOTE: DETAILS PROVIDED FOR ILLUSTRATIVE PURPOSES. ENGINEERED DRAWINGS TO BE PROVIDED FOR PERMIT.



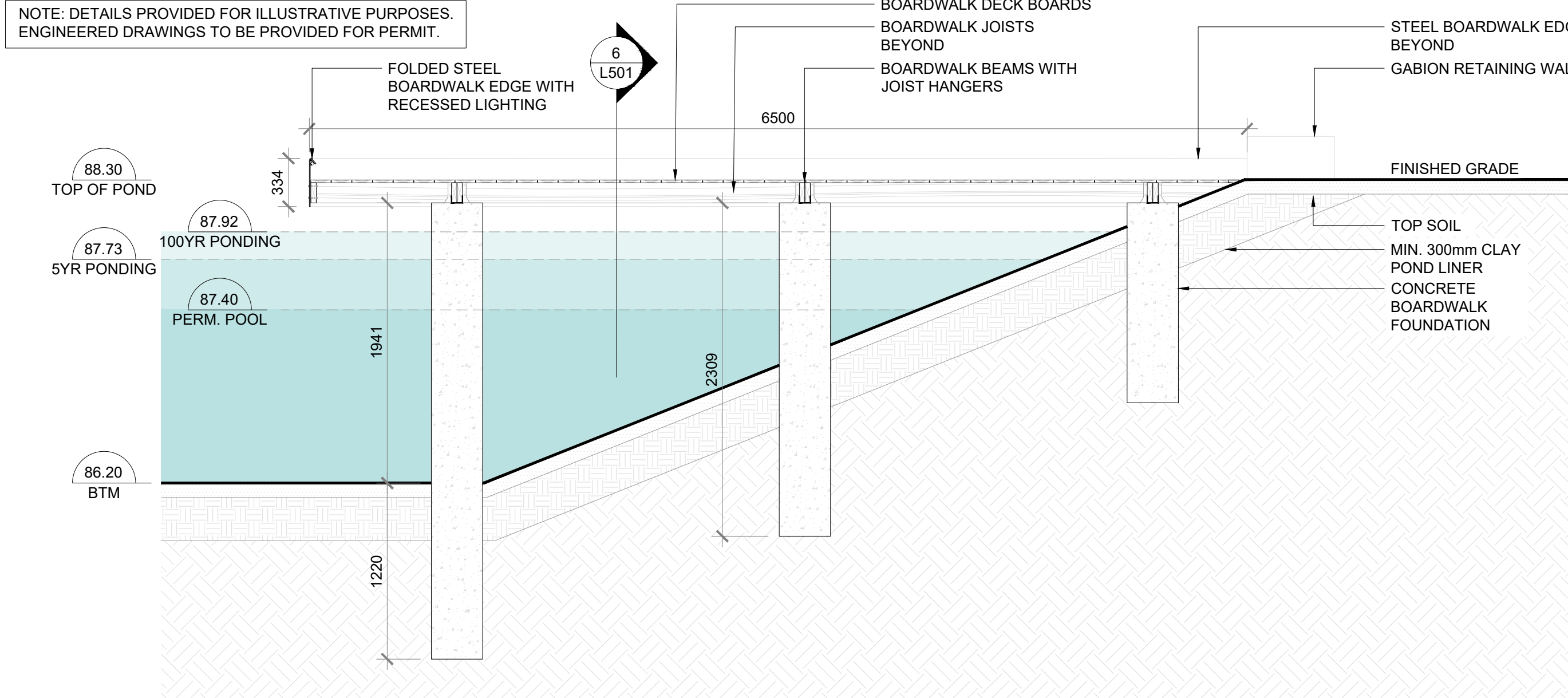
3 GARBAGE ENCLOSURE POST DETAIL PLAN
SCALE: 1 : 5

NOTE: DETAILS PROVIDED FOR ILLUSTRATIVE PURPOSES. ENGINEERED DRAWINGS TO BE PROVIDED FOR PERMIT.



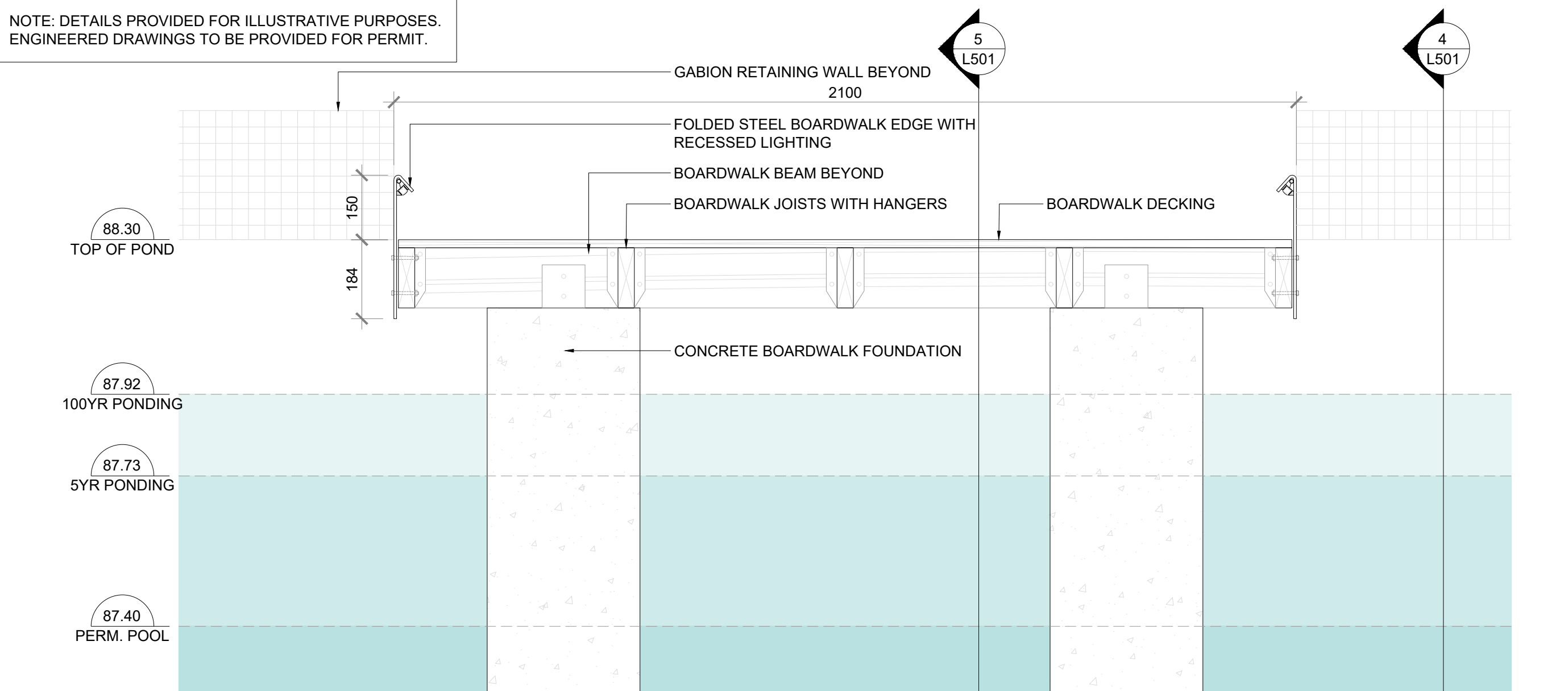
4 ELEVATION OF BOARDWALK
SCALE: 1 : 30

NOTE: DETAILS PROVIDED FOR ILLUSTRATIVE PURPOSES. ENGINEERED DRAWINGS TO BE PROVIDED FOR PERMIT.



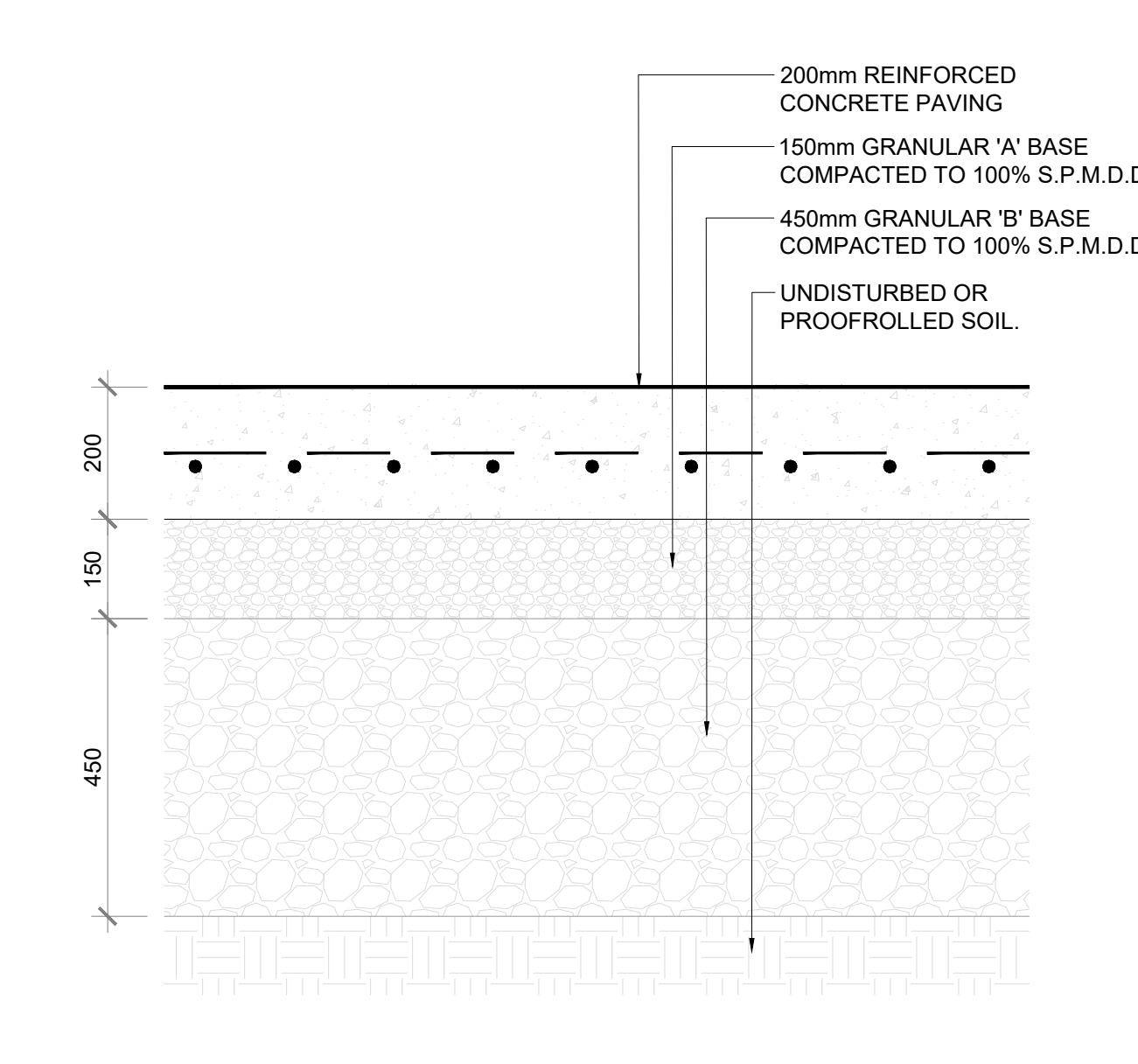
5 SECTION OF BOARDWALK
SCALE: 1 : 30

NOTE: DETAILS PROVIDED FOR ILLUSTRATIVE PURPOSES. ENGINEERED DRAWINGS TO BE PROVIDED FOR PERMIT.



6 CROSS SECTION OF BOARDWALK
SCALE: 1 : 10

7 PAVEMENT TACTILE INDICATOR
SCALE: NTS



8 HEAVY DUTY REINFORCED CONCRETE PAVING
SCALE: 1 : 10

NOTES

1. ALL PROPOSED PAVED SURFACES NOT ABOVE GARAGE SLAB ARE SUPPORTED BY SUBBASE MATERIALS DESCRIBED IN THE DETAILS - WITH A LAYER OF EITHER GRANULAR 'A' OR HIGH PERFORMANCE BEDDING. NO LIMESTONE SCREENS OR CRUSHER RUN LIMESTONE ARE USED.
2. ALL UNIT PAVERS IN THE CITY RIGHT-OF-WAY ARE TO BE CONSTRUCTED ON A CONCRETE BASE AS PER CITY DETAIL T-561.030.1

ISSUE

- 2 2025-06-12 RE-ISSUED FOR SPA
- 1 2025-02-20 ISSUED FOR SPA



JRS

148 Kenwood Avenue Toronto, ON M6G 2S3 office@rstudio.ca rstudio.ca +1 416 656 6665

VOLTA ESTATE WINERY

17945 LOYALIST PARKWAY, ROSEHALL, PRINCE EDWARD COUNTY

LANDSCAPE DETAILS

SCALE: AS NOTED
DRAWN: NG
CHECKED: WS
PROJECT NUMBER: 22-057
DRAWING DATE: 2025-02-20

L501