



DATE: March 1<sup>st</sup>, 2025

From:  
Emily Kerr  
Office Administrator  
Hubert Kerr Construction Ltd.

To: Municipality of Prince Edward  
Planning and Development Department  
RE: 2590 County Rd 15  
Site Plan Control Application  
Item 18: Septic Design Details

To whom it may concern,

We are Hubert Kerr Construction Ltd, the builder and GC for the project at 2590 County Rd 15. We are writing to confirm septic details comply with specs needed. Please see attached a formal letter from the septic designer and installer – C.B Fennell Ltd. Also attached is a spec sheet detailing the type and size of septic tank installed from supplier.

Thank you for your time,

Regards,

Emily Kerr

Office Administrator

## **C.B. FENNELL LTD.**

### **READY MIXED CONCRETE**

29 COUNTY ROAD 18  
CHERRY VALLEY, ONTARIO  
K0K1P0  
613-476-2653  
E-MAIL-cbfennelltd@xplornet.com

GoodMorning:

INSTALLED --- 800 gallon septic tank

100 gallon pump tank

Both were hammered into rock to get appropriate height

TILE BED ---Area stripped of topsoil and organics approximately two (2) feet in depth. Area approximately 30' by 30' (900 square feet)

IMPORTED SAND ---T<10 to bring back up to grade-30" filter media sand imported on 24'x22' (528 sq.ft.)imported sand for mantel area.

PERMIT APPLICATION WAS MADE OUT FOR PARTIALLY

RAISED TILE BED -FULLY RAISED WAS INSTALLED DUE TO

DEPTH OF SOIL.

MICHAEL LEAVITT

C. B. FENNELL LTD.

BCIN #33294



# SEPTIC TANK

800 IMPERIAL GALLONS  
(3600 LITRES)

# A & B

## PRECAST MANUFACTURING LIMITED

R.R.#5, BELLEVILLE, ONTARIO, K8N 4Z5  
Phone: (613) 962-9111 Fax: (613) 962-4686  
Toll Free: 1-800-267-2851

### SPECIFICATION DETAILS

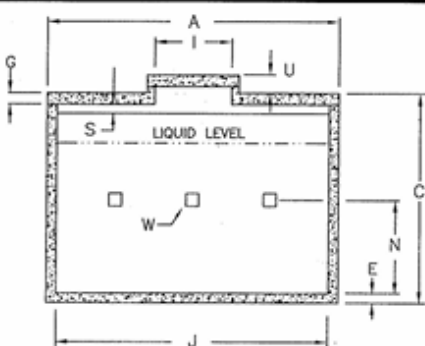
Concrete Strength: 4641 PSI (32 MPa)

Weight: Top Bottom Total  
1600 6300 7900 lb.  
(740) (2900) (3640)kg.

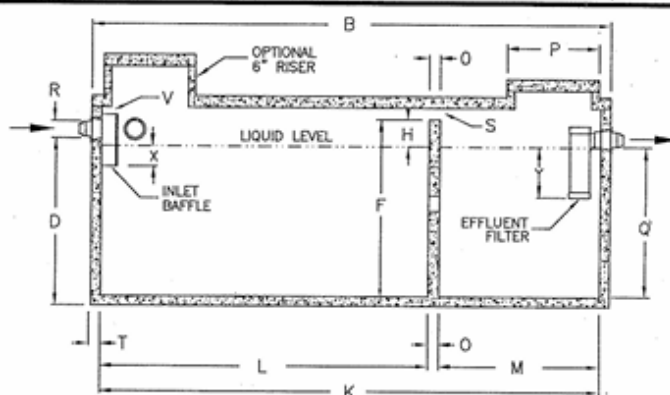
Reinforcing: Lid - 4 pcs @ 10M rebar longitudinal  
- 6 pcs @ 10M rebar transverse  
Sides & Bottom - Single continuous horizontal 10M rebar  
@ top of sides c/w 12"x12" 10M rebar  
corner splicers

### NOTES

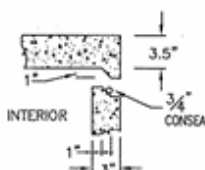
1. Close tolerance of tongue and groove joint and a fibrous mastic sealant guarantee a solid structural and water-tight joint.
2. Concrete risers in 6" (150mm) increments are available for both access openings to allow for variable burial depths.
3. Maximum burial depth is 24" (600mm) from top of lid to finished grade. Additional reinforcing can be added to allow for deeper burials.
4. Effluent filter to be Tuf-Tite EF-6 (1500 gal/day)
5. Inlet and Outlet devices to be POLY-III CE Seals.
6. All concrete c/w 4.0 kg/m<sup>3</sup> structural synthetic fibre



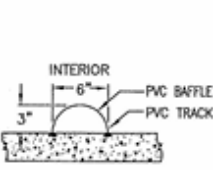
Cross Section



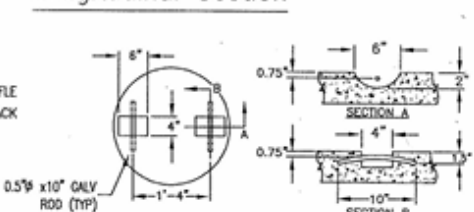
Longitudinal Section



Joint Section



Baffle Detail



Lifting Device Detail

### DIMENSIONAL DATA

Inches (mm)

December 30 2020

A: Overall Width	60.0 (1524.0)	D: Thickness of Partition Wall	2.6 (65.0)
B: Overall Length	90.0 (2286.0)	P: Outside Diameter Of Risers and Lid	24.0 (609.6)
C: Overall Height	65.0 (1651.0)	Q: Top of Floor to Bottom of Outlet (Liquid Depth)	49.0 (1244.6)
D: Base to Bottom of Inlet	54.5 (1384.3)	R: Diameter of Inlet and Outlet	3.0 or 4.0 (76.2 or 101.6)
E: Thickness of Base	3.0 (76.2)	S: Air Circulation Space	2.5 (63.5) 135 sq/in (871.0 sq/cm)
F: Floor to Top of Partition Wall	56.0 (1422.4)	T: Exterior Wall Thickness	3.0 (76.2)
G: Thickness of Lid	3.5 (88.9)	U: Top of Lid to Top of Access Cover	5.5 (139.7)
H: Scum Capacity	7.0 (177.8)	V: Top of Inlet Baffle to U/S of Top	1.0 (25.4)
I: Inside Ø of Risers & Access Hole	20.0 (508.0)	W: Total of 3 Flow Throughs	75 sq/in (484 sq/cm)
J: Inside Base Width	54.0 (1371.6)	X: Inlet Liquid Penetration	3.5 (88.9)
K: Inside Base Length	84.0 (2133.6)	Y: Outlet Liquid Penetration	12.8 (320.0)
L: Large Compartment	55.0 (1397.0)	Length of Inlet Baffle	12.0 (304.8)
M: Small Compartment	27.0 (685.8)	Length of Effluent Filter	20.5 (520.7)
N: Floor to Ø of Flow Through Holes	29.0 (736.6)		

