

DO NOT SCALE DIMENSIONS  
CHECK AND VERIFY ALL DIMENSIONS BEFORE  
PROCEEDING WITH THE WORK. CONSTRUCTION  
UNLESS STAMPED AND SIGNED BY THE CONSULTANT  
CONFORMS WITH THE CITY OF TORONTO BUILDING CODE  
AND ALL APPLICABLE REGULATIONS.

REV.	DATE	DESCRIPTION
1	2024.02.26	ISSUED FOR REVIEW
2	2024.11.19	REISSUED FOR SITE PLAN
3	2025.03.04	REISSUED FOR SITE PLAN
4	2025.03.04	REISSUED FOR SITE PLAN



- GRASS
- CLIP CONCRETE
- ASPHALT PAVING
- HEAVY DUTY ASPHALT PAVING
- FIRE ROUTE
- PROP. LINE
- LIGHT STANDARD
- ENTRANCE LIGHT
- FIRE HYDRANT
- SEWAGE
- RETAINING WALL

**Alexander Wilson**  
Architects  
1000 SHEPPARD AVENUE EAST  
SUITE 1000  
TORONTO, ONT. M2X 1L3  
T: 416-491-3144  
F: 416-491-3141

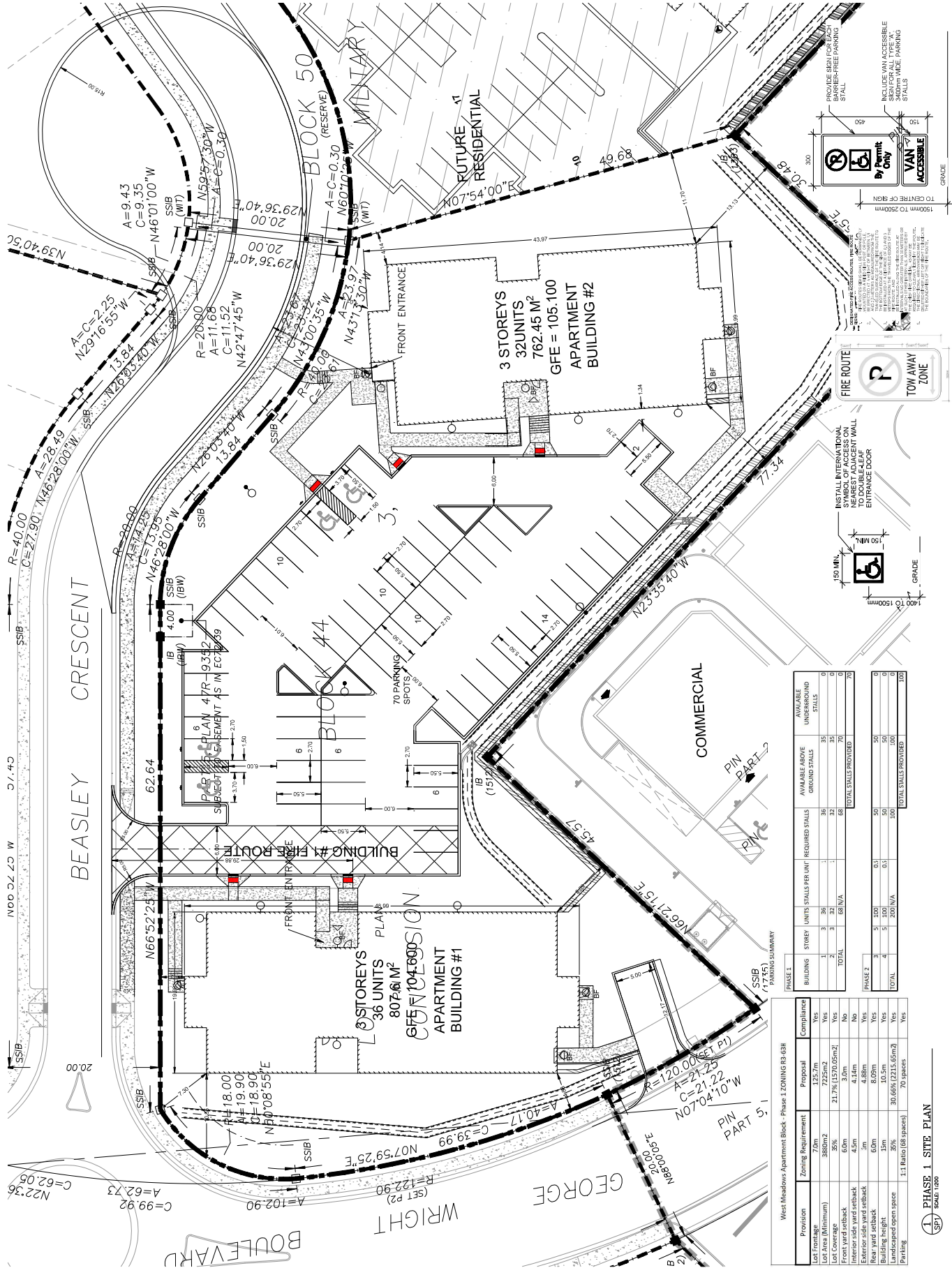


WEST MEADOWS APARTMENTS

PETTOR, ONTARIO

**SITE PLAN  
PHASE 1**

PROJECT NO.	2105
DATE	11/19/2024
SCALE	AS SHOWN
PROJECT	3
DATE	11/19/2024
PROJECT	3
DATE	11/19/2024
PROJECT	3



PHASE 1

BUILDING	STOREY	UNITS PER UNIT	REQUIRED STALLS	AVAILABLE ABOVE GROUND STALLS	AVAILABLE UNDERGROUND STALLS
1	3	36	36	35	0
2	3	68	68	70	0
TOTAL			104	105	0

PHASE 2	STOREY	UNITS PER UNIT	REQUIRED STALLS	AVAILABLE ABOVE GROUND STALLS	AVAILABLE UNDERGROUND STALLS
1	5	100	0.1	50	50
2	5	100	0.1	50	50
TOTAL			0.2	100	100

West Meadows Apartment Block - Phase 1 ZONING R3-63H

Provision	Zoning Requirement	Proposal	Compliance
Lot Frontage	7.0m	125.7m	Yes
Lot Area (Minimum)	3880m <sup>2</sup>	725m <sup>2</sup>	Yes
Front yard setback	35%	21.7m (1570.05m <sup>2</sup> )	Yes
Lot Coverage	60m	3.0m	No
Front yard setback	3.0m	3.0m	Yes
Exterior side yard setback	1.5m	4.18m	Yes
Rear yard setback	6.0m	8.09m	Yes
Building height	15m	10.5m	Yes
Landscaped open space	35%	30.66% (2215.65m <sup>2</sup> )	Yes
Parking	1:1 Ratio (88 spaces)	70 spaces	Yes

**PHASE 1 SITE PLAN**  
SCALE: 1:500