

PLANT MATERIAL SCHEDULE FOR TREE PLANTING

SYMBOL	QUANTITY	BOTANICAL NAME	COMMON NAME	SIZE	CONDITION	NATIVE	BIODIVERSITY FACTOR*	SUPPORTS POLLINATORS	ATTRACTS BIRDS
AfJ	11	Acer freemanii 'Jeffersred'	Autumn Blaze Maple	50cm	WB	Native	235		Yes
Gd	7	Gymnocladus dioica	Kentucky Coffee Tree	60cm	WB	Native		Yes	Yes
PcR	8	Pyrus calleryana 'Redspire'	Redspire Flowering Pear	45cm	WB	Ornamental		Yes	Yes
Pg	15	Picea glauca	White Spruce	175cm	WB	Native	156		
Po	6	Picea omorika	Serbian Spruce	175cm	WB	Ornamental	156		
Ps	6	Pinus strobus	Eastern White Pine	150cm	WB	Native	259		
Qm	13	Quercus macrocarpa	Burr Oak	60cm	WB	Native	521		Yes

* Biodiversity Value represents the number of butterfly and moth species the plant hosts. This is essential as caterpillars are the foundation for building the food web and enhancing biodiversity, being the primary food for nesting birds to feed their young. Based upon the research of Dr. Douglas Tallamy, University of Delaware.

LEGEND

- ONTARIO SEED COMPANY NATIVE PRAIRIE MEADOW SEED MIX
- SODDED LAWN ON 150mm COMPACTED DEPTH OF NO.1 SCREENED TOPSOIL
- EXISTING GRANULAR SURFACE
- PROPOSED GRAVEL DIAPHRAGM, REFER TO ARCH.
- PROPOSED BIOSWALE DITCH, REFER TO ARCH.
- EXISTING WETLAND
- 50m BUFFER FROM WETLAND
- EXISTING AGRICULTURAL USE
- PROPOSED PERENNIAL PLANTING
- PROPOSED GRANULAR SURFACING
- EXISTING TREE LINE
- PROPOSED TREES
- LIMIT OF SEED MIX
- PROPERTY LINE
- 100 YEAR FLOOD LINE
- 15m SETBACK FROM 100 YEAR FLOOD LINE
- 50m EPW BUFFER
- EXISTING WATER LINE
- PROPOSED WATER LINE
- PROPOSED SANITARY LINE
- PROPOSED SILT FENCE, REFER TO ARCH.
- 0.5% PROPOSED SLOPE, REFER TO ARCH.

NOTES

ONTARIO SEED COMPANY NATIVE PRAIRIE MEADOW SEED MIX 8/35 CONTAINING RUDBECKIA HIRTA, SOLIDAGO JUNCEA, POA PALUSTRIS, PENSTEMON DIGITALIS, SCORRHASTUM NUTANS, SCHIZACHYRIUM SCOPARUM, ASTER NOVAE-ANGLIAE, DESMODIUM CANADENSE, PANICUM VIRSATUM, VERBENA URTOIFOLIA, AND MONARDA PISTULOSA.

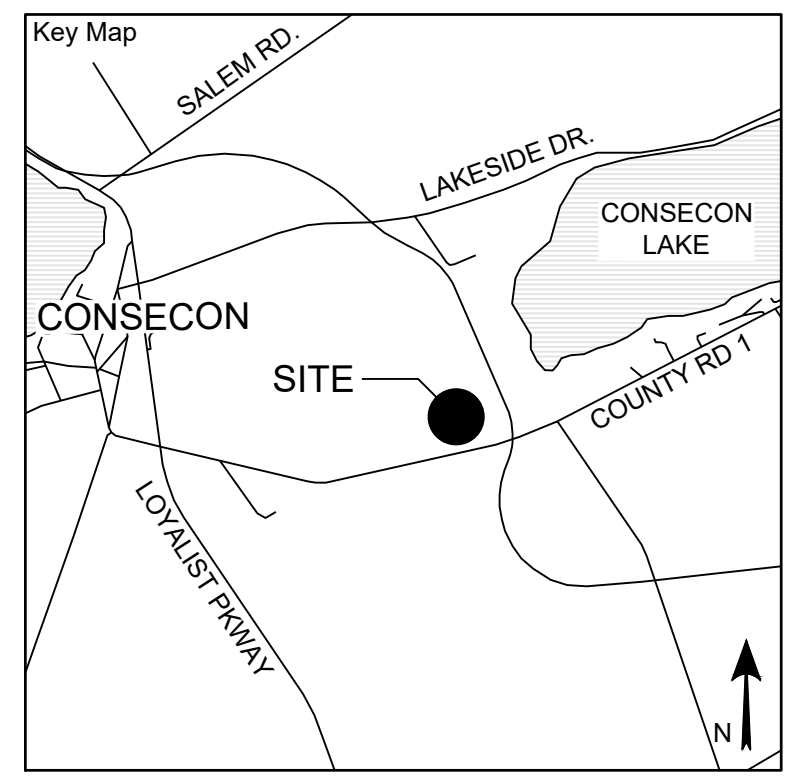
- APPLY AT A RATE OF 7 LBS/1000 S.F.
- HYDRO MULCH USING BONDED FIBRE MATRIX APPLIED AT A RATE OF 4,000 LBS/ACRE



SCALE: 1:750

Seal of the Association of Landscape Architects (ALA) and a North arrow pointing upwards.

No.	Issues and Revisions	Date
1.	ISSUED FOR REVIEW	2025-01-24
2.	ISSUED FOR REVIEW	2025-01-30
3.	ISSUED FOR REVIEW	2025-01-31
4.	ISSUED FOR SPA	2025-10-08



Project Notes

This design and drawing are the property of The Scott Wentworth Landscape Group Ltd. and are not to be copied or used for construction purposes without the Landscape Architect's express written consent.

The contractor shall check and verify all dimensions and report any discrepancies, error, or omissions to the Landscape Architect prior to commencing work.

Base plan information taken from Site Plan provided by: Company Name: THE GREER GALLOWAY GROUP INC. CONSULTING ENGINEERS Dated: 10/06/2024

Wentworth Landscapes
13392 Loyalist Parkway R.R. 1, Picton ON K0K 2T0
613.547.3772

Consultants



Client AZZORYPA GROUP INC.	
Project LAKEVIEW COTTAGES	
Project Location 5738 COUNTY RD. 1 CONSECON, PEC	
Drawing Title OVERALL LANDSCAPE PLAN AND TREE PLANTING PLAN	
Scale 1:750	
Date 2025-01-17	Plot Date 2025-10-08
Designed By SW	Drawn By LT
Approved By CR	Drawing Number
Project Number 25000-DC	L1.0

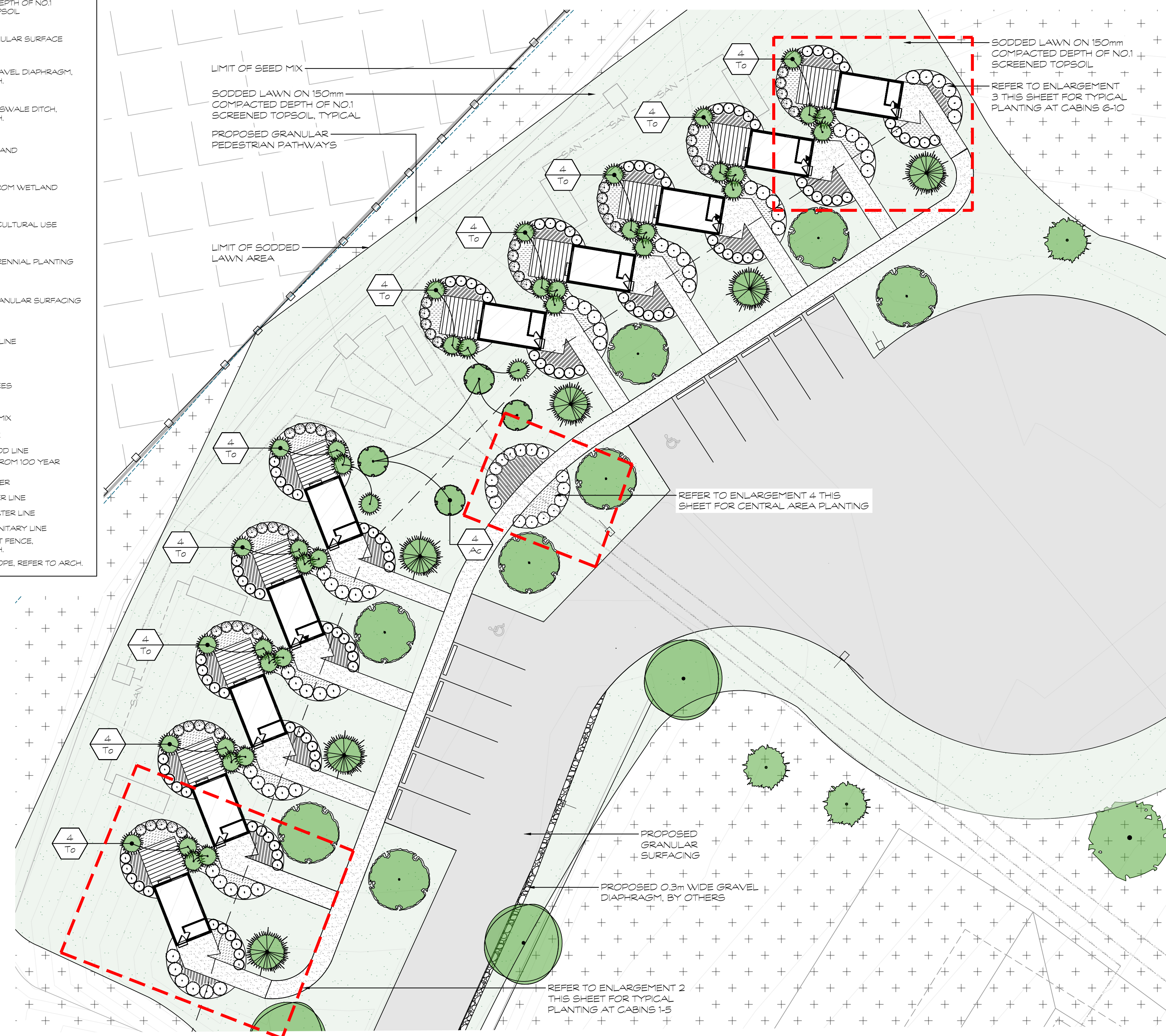
SYMBOL	QUANTITY	BOTANICAL NAME	COMMON NAME	SIZE	CONDITION	NATIVE	BIODIVERSITY FACTOR*	SUPPORTS POLLINATORS	ATTRACTS BIRDS
Trees									
To	140	<i>Thuja occidentalis</i>	Eastern White Cedar	175cm	NVB	Native	146		Yes
Shrubs									
Ac	4	<i>Amelanchier canadensis</i>	Downy Serviceberry Clump	175cm	NVB Clump	Native	124	Yes	Yes
CoE	52	<i>Cornus alba Elegantisima</i>	Variiegated Silveredge Dogwood	50cm/3gal	Potted	Ornamental	12	Yes	Yes
D	19	<i>Diervilla lonicera</i>	Bush Honeysuckle	40cm/3gal	Potted	Native	4	Yes	Yes
S/G	13	<i>Spiraea japonica Gold Mound</i>	Gold Mound Spirea	40cm/3gal	Potted	Ornamental	4	Yes	Yes
Perennials									
N/P	18	<i>Nepeta faassenii Purrsion Blue</i>	Purrsion Blue Catmint	1gal	Potted	Ornamental	17	Yes	Yes
R/g	175	<i>Rudbeckia fulgida Goldsturm</i>	Goldsturm Black-eyed Susan	1gal	Potted	Native	17	Yes	Yes
S/C	270	<i>Salvia nemorosa Caradonna</i>	Caradonna Sage	1gal	Potted	Ornamental	9	Yes	Yes
Ornamental Grasses									
CoH	140	<i>Calamagrostis scutiflora Hello Spring</i>	Hello Spring Feather Reed Grass	2gal	Potted	Ornamental	5	Yes	Yes
PV	100	<i>Panicum virgatum</i>	Switch Grass	2gal	Potted	Native	25	Yes	Yes
P/S	7	<i>Panicum virgatum Shenandoah</i>	Shenandoah Switch Grass	1gal	Potted	Native	25	Yes	Yes

* Biodiversity Value represents the number of butterfly and moth species the plant hosts. This is essential as caterpillars are the foundation for building the food web and enhancing biodiversity, being the primary food for nesting birds to feed their young. Based upon the research of Dr. Douglas Tallamy, University of Delaware.

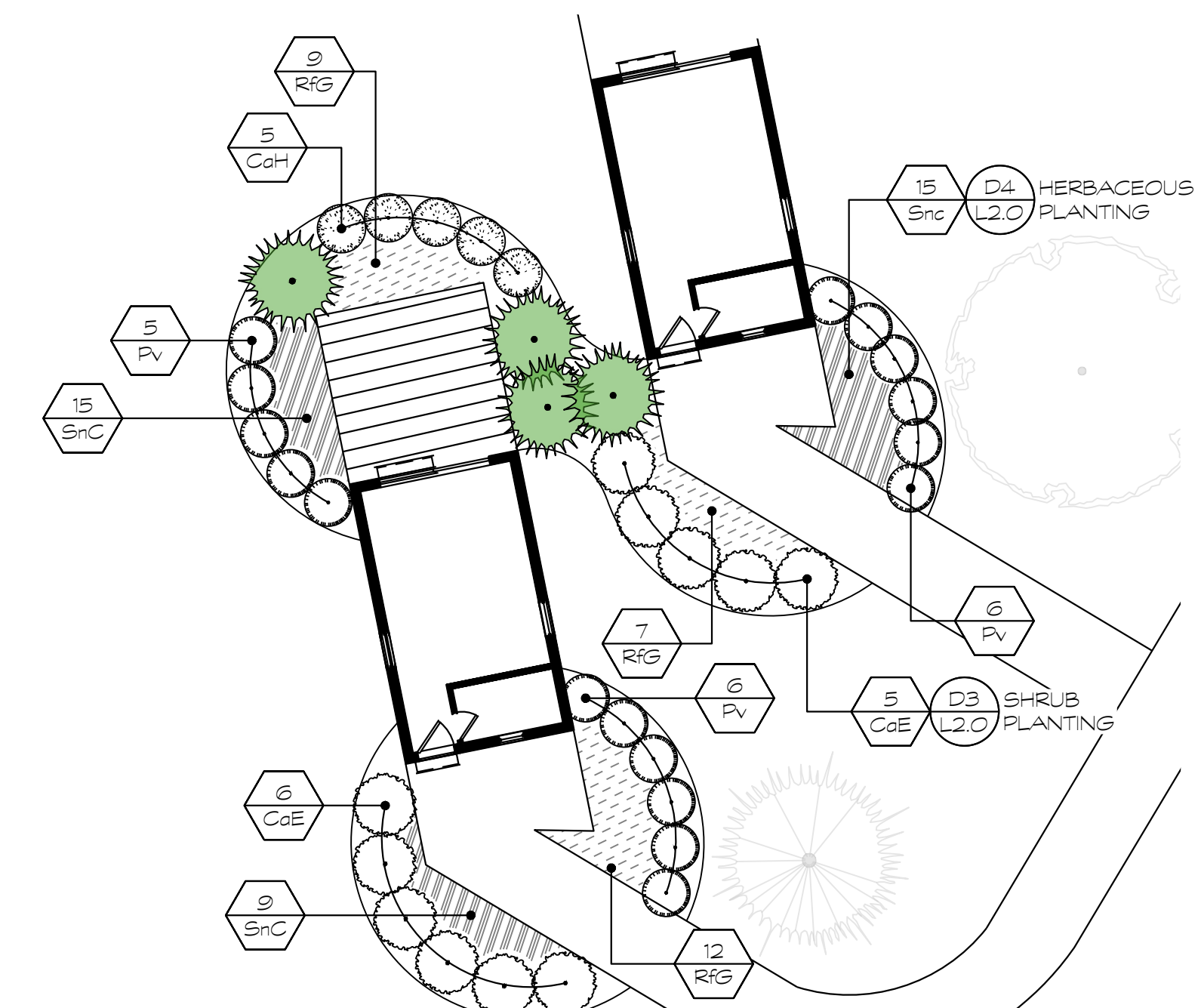
NOTES
 ONTARIO SEED COMPANY
 NATIVE PRAIRIE MEADOW SEED MIX #135
 CONTAINING RUOBESKIA HIRTA, SOLIDAGO JUNCEA, POA PALUSTRIS, PENSTEMON DIGITALIS, SORGHASTUM NUTANS, SCHIZACHYRUM SCOPARUM, ASTER NOV-ANGUSIAE, DESMODIUM CANADENSE, PANICUM VIRGATUM, VERBENA URTOFOLIA, AND MONARDA FETULOSA
 - APPLY AT A RATE OF 7 LBS/1,000 S.F.
 - HYDRO MULCH USING BONDED FIBRE MATRIX APPLIED AT A RATE OF 4,000 LBS/ACRE

LEGEND

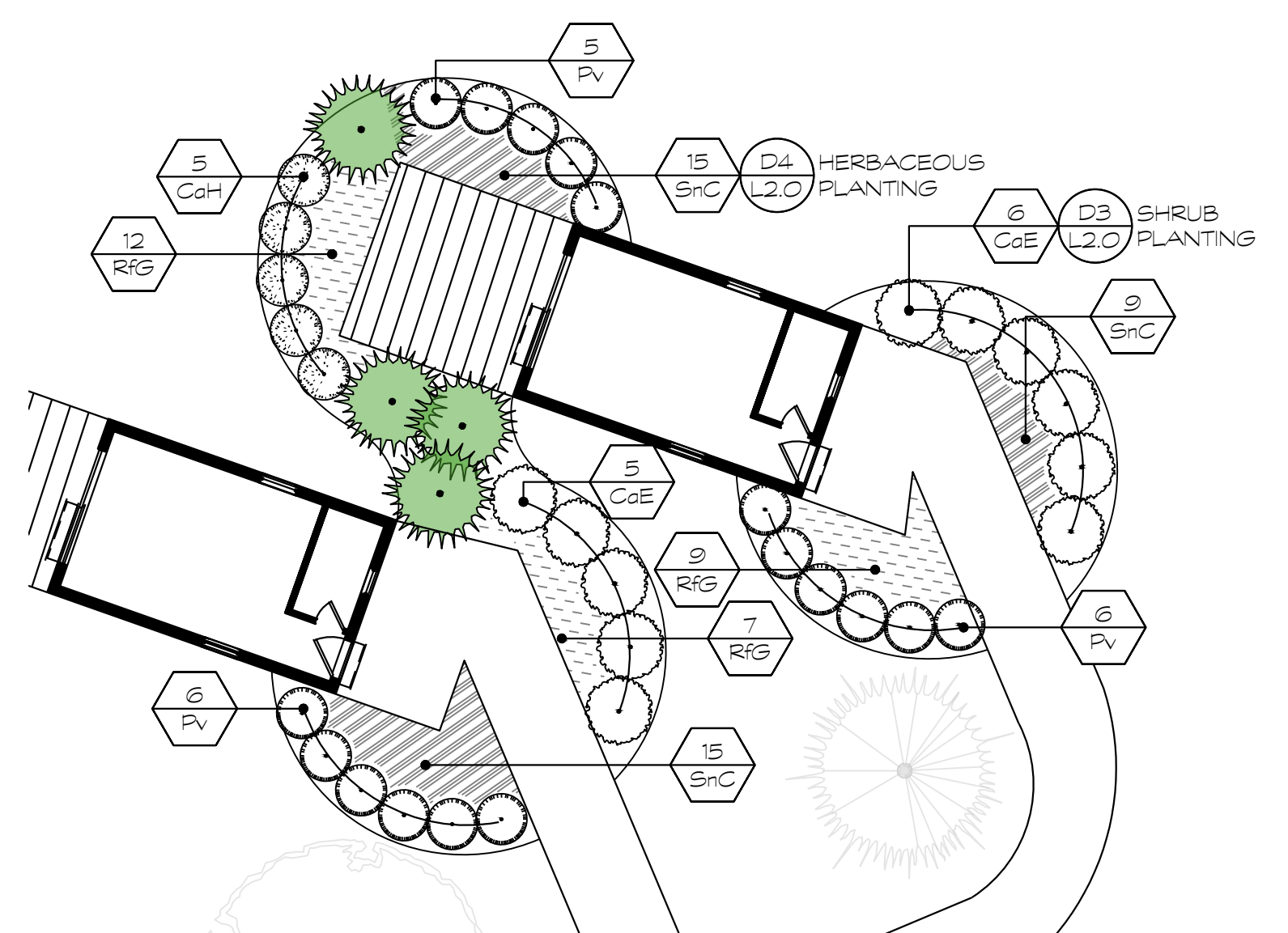
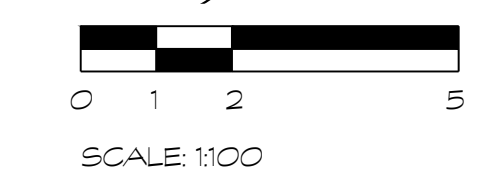
- ONTARIO SEED COMPANY NATIVE PRAIRIE MEADOW SEED MIX
- SODDED LAWN ON 150mm COMPACTED DEPTH OF NO.1 SCREENED TOPSOIL
- EXISTING GRANULAR SURFACE
- PROPOSED GRAVEL DIAPHRAGM, REFER TO ARCH.
- PROPOSED BIOSWALE DITCH, REFER TO ARCH.
- EXISTING WETLAND
- 30m BUFFER FROM WETLAND
- EXISTING AGRICULTURAL USE
- PROPOSED PERENNIAL PLANTING
- PROPOSED GRANULAR SURFACING
- EXISTING TREE LINE
- PROPOSED TREES
- LIMIT OF SEED MIX
- PROPERTY LINE
- 100 YEAR FLOOD LINE
- 15m SETBACK FROM 100 YEAR FLOOD LINE
- 50m EPW BUFFER
- EXISTING WATER LINE
- PROPOSED WATER LINE
- PROPOSED SANITARY LINE
- PROPOSED SILT FENCE, REFER TO ARCH.
- 0.5% PROPOSED SLOPE, REFER TO ARCH.



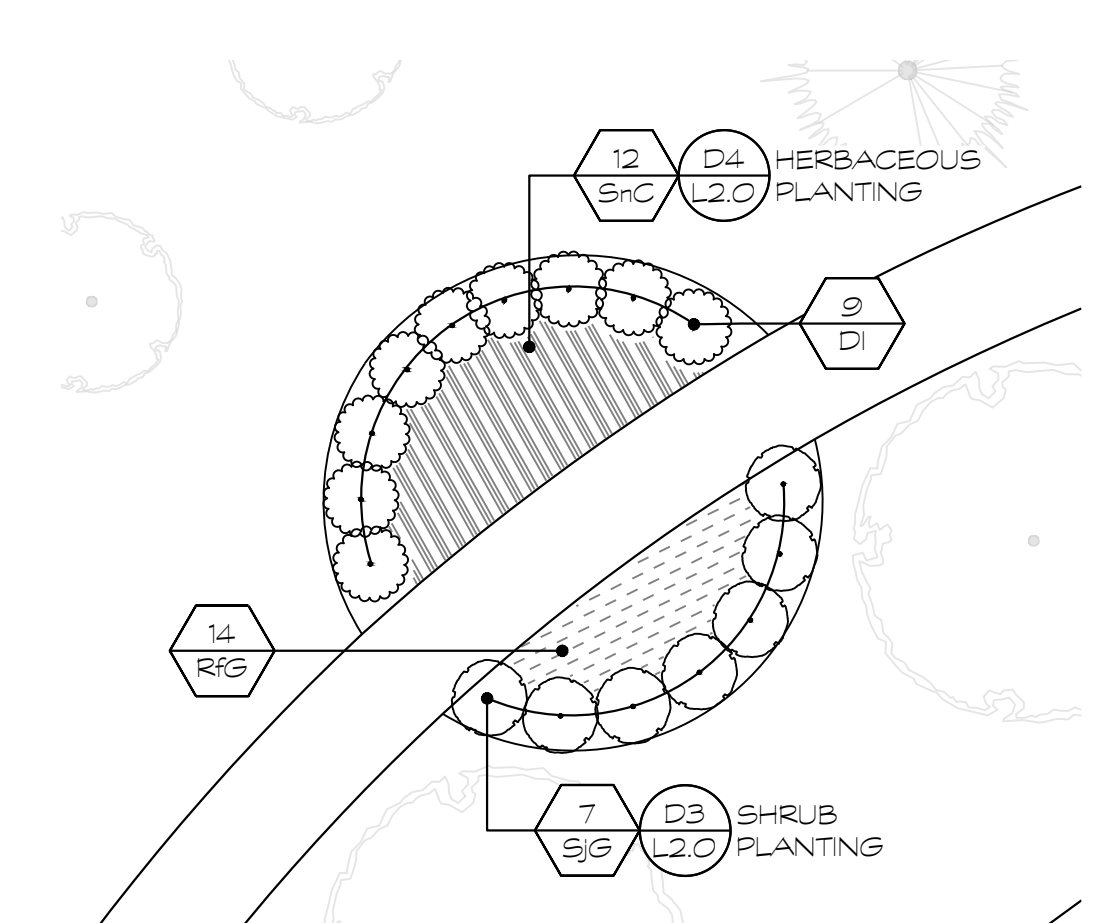
ENLARGEMENT 1: CENTRAL AREA



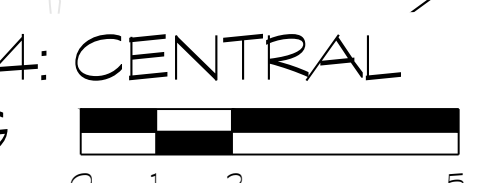
ENLARGEMENT 2: TYPICAL PLANTING AT CABINS 1-5



ENLARGEMENT 3: TYPICAL PLANTING AT CABINS 6-10

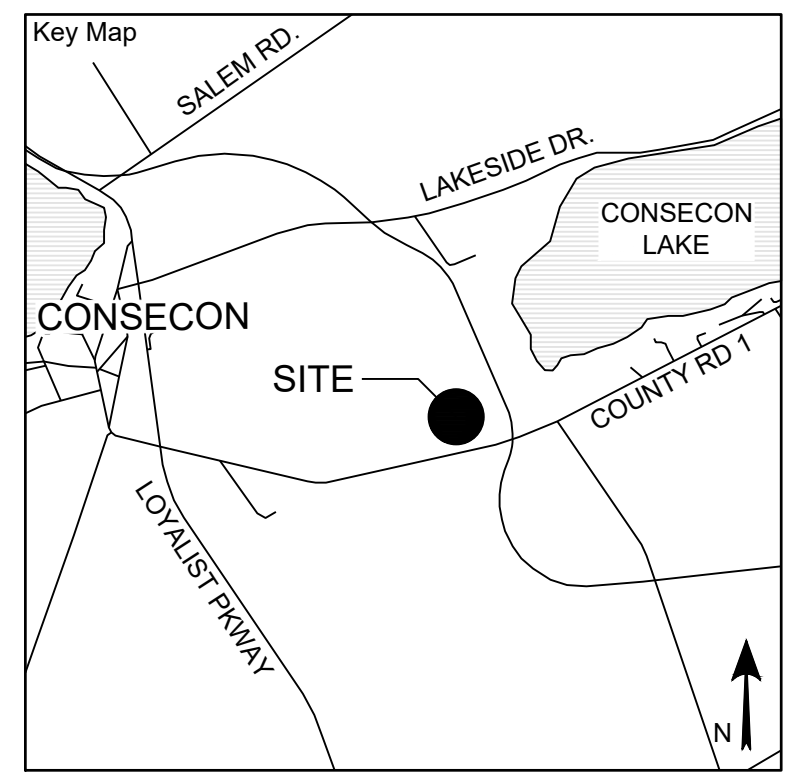


ENLARGEMENT 4: CENTRAL AREA PLANTING



Seal of the Association of Landscape Architects (ALA) and a North arrow pointing upwards.

No.	Issues and Revisions	Date
1.	ISSUED FOR REVIEW	2025-01-24
2.	ISSUED FOR REVIEW	2025-01-30
3.	ISSUED FOR REVIEW	2025-01-31
4.	ISSUED FOR SPA	2025-10-08



Project Notes
 This design and drawing are the property of The Scott Wentworth Landscapes Group Ltd. and are not to be copied or used for construction purposes without the Landscape Architect's express written consent.
 The contractor shall check and verify all dimensions and report any discrepancies, error, or omissions to the Landscape Architect prior to commencing work.
 Base plan information taken from Site Plan provided by:
 Company Name: THE GREER GALLOWAY GROUP INC.
 CONSULTING ENGINEERS
 Dated: 10/06/2024

Wentworth Landscapes
 13392 Loyalist Parkway R.R.1, Picton ON K0K 2T0
 613.547.3772

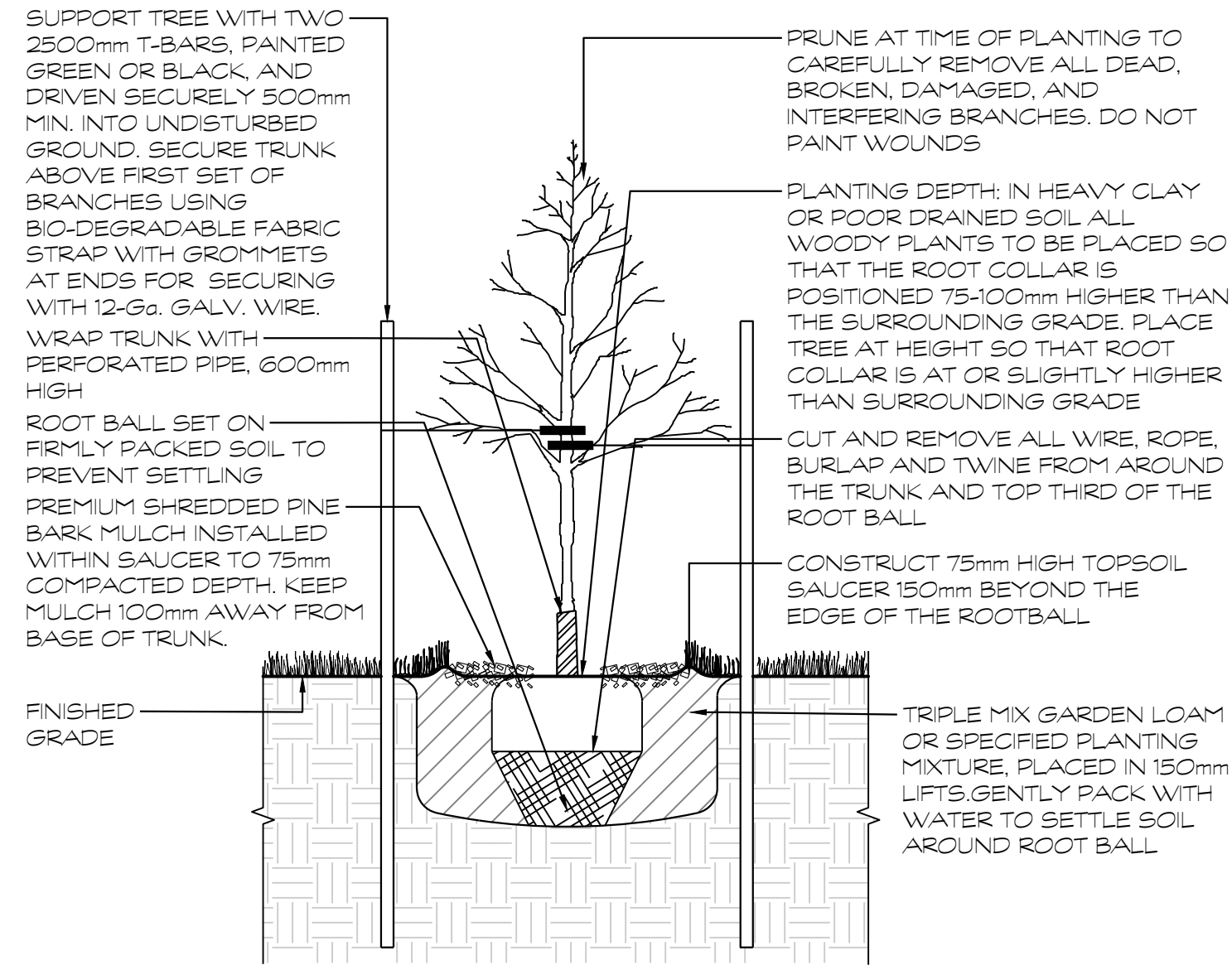
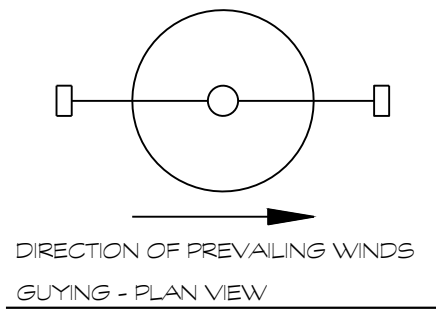
Consultants



Client AZZORYPA GROUP INC.	
Project LAKEVIEW COTTAGES	
Project Location 5738 COUNTY RD. 1 CONSECON, PEC	
Drawing Title ENLARGEMENT PLANS	
Scale AS NOTED	
Date 2025-01-17	Plot Date 2025-10-08
Designed By SW	Drawn By LT
Approved By CR	Drawing Number
Project Number 25000-DC	

PLANT MATERIAL QUALITY STANDARDS
ALL PLANT MATERIAL TO CONFORM TO THE LEVELS OF STANDARDS ESTABLISHED BY THE CANADIAN STANDARDS FOR NURSERY STOCK, EIGHTH EDITION, PUBLISHED BY THE CANADIAN NURSERY LANDSCAPE ASSOCIATION.

WATERING
ENSURE TREES ARE THOROUGHLY WATERED AT TIME OF PLANTING, CONTINUE WATERING AS REQUIRED TO PROVIDE ADEQUATE MOISTURE FOR THE DURATION OF THE SPECIFIED MAINTENANCE DURING ESTABLISHMENT PERIOD.

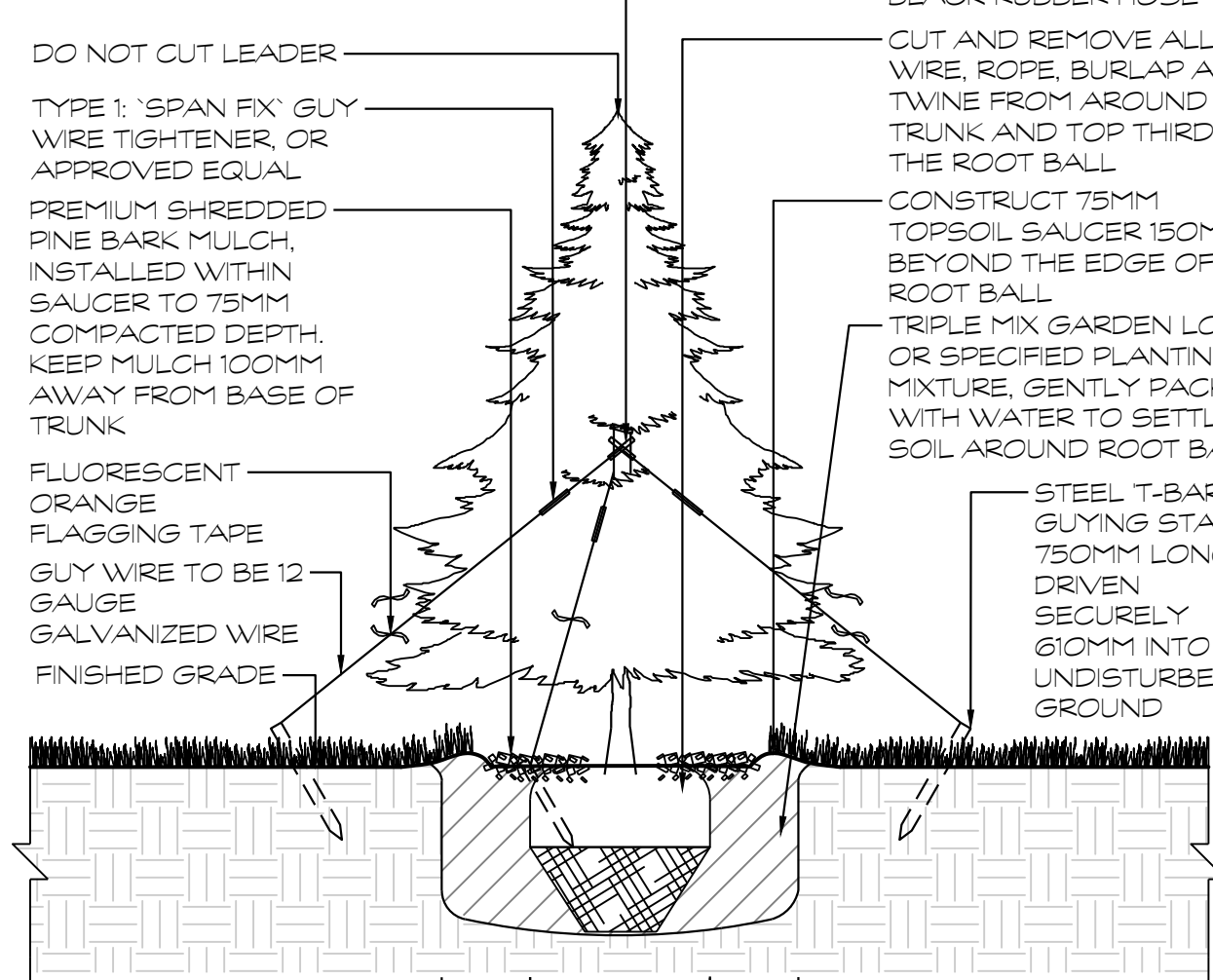


D1 DECIDUOUS TREE PLANTING
1:25

PLANT MATERIAL QUALITY STANDARDS
ALL PLANT MATERIAL TO CONFORM TO THE LEVELS OF STANDARDS ESTABLISHED BY THE CANADIAN STANDARDS FOR NURSERY STOCK, EIGHTH EDITION, PUBLISHED BY THE CANADIAN NURSERY LANDSCAPE ASSOCIATION.

WATERING
ENSURE TREES ARE THOROUGHLY WATERED AT TIME OF PLANTING, CONTINUE WATERING AS REQUIRED TO PROVIDE ADEQUATE MOISTURE FOR THE DURATION OF THE SPECIFIED MAINTENANCE DURING ESTABLISHMENT PERIOD.

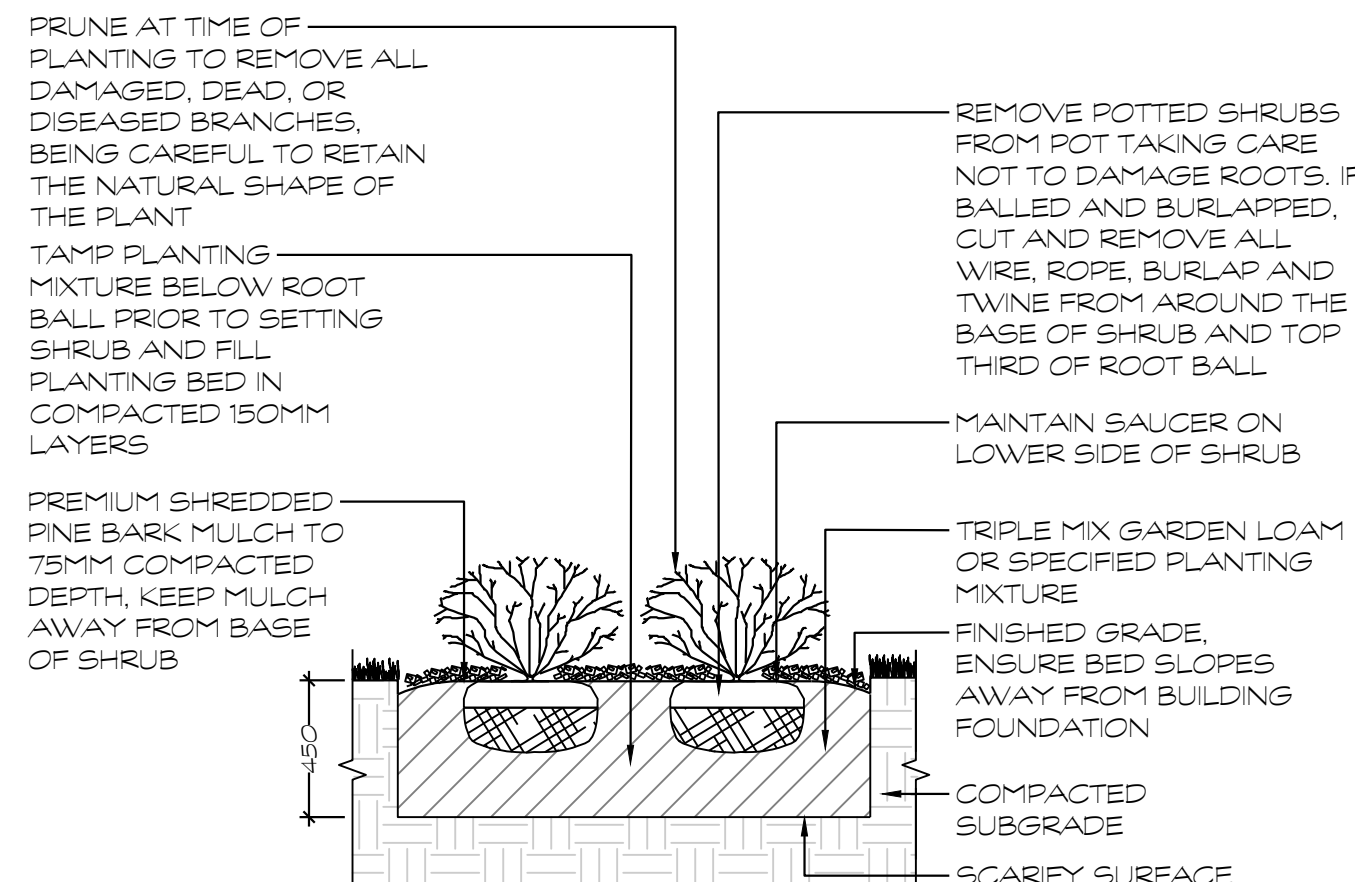
PLANTING DEPTH
IN HEAVY CLAY OR POORLY DRAINED SOIL ALL WOODY PLANTS TO BE PLACED SO THAT THE ROOT COLLAR IS POSITIONED 75-100mm HIGHER THAN THE SURROUNDING GRADE. PLACE TREE AT HEIGHT SO THAT ROOT COLLAR IS AT OR SLIGHTLY HIGHER THAN SURROUNDING GRADE.



D2 CONIFEROUS TREE PLANTING
1:25

PLANT MATERIAL QUALITY STANDARDS
ALL PLANT MATERIAL TO CONFORM TO THE LEVELS OF STANDARDS ESTABLISHED BY THE CANADIAN STANDARDS FOR NURSERY STOCK, NINTH EDITION, PUBLISHED BY THE CANADIAN NURSERY LANDSCAPE ASSOCIATION.

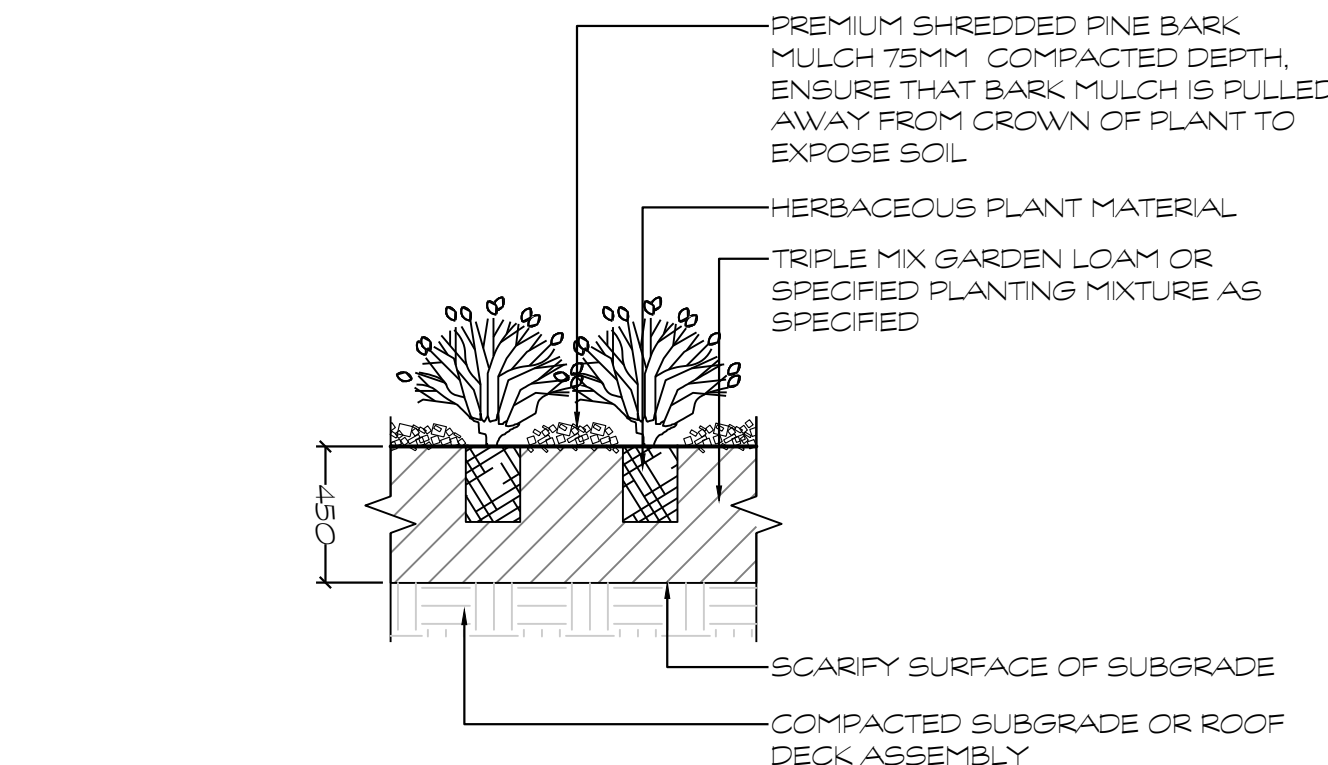
WATERING
ENSURE SHRUBS ARE THOROUGHLY WATERED AT TIME OF PLANTING, CONTINUE WATERING AS REQUIRED TO PROVIDE ADEQUATE MOISTURE FOR THE DURATION OF THE SPECIFIED MAINTENANCE DURING ESTABLISHMENT PERIOD.



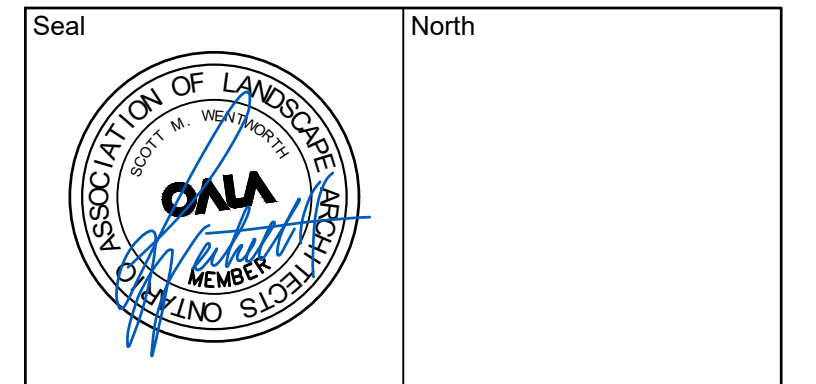
D3 SHRUB PLANTING
1:25

PLANT MATERIAL QUALITY STANDARDS
ALL PLANT MATERIAL TO CONFORM TO THE LEVELS OF STANDARDS ESTABLISHED BY THE CANADIAN STANDARDS FOR NURSERY STOCK, EIGHTH EDITION, PUBLISHED BY THE CANADIAN NURSERY LANDSCAPE ASSOCIATION.

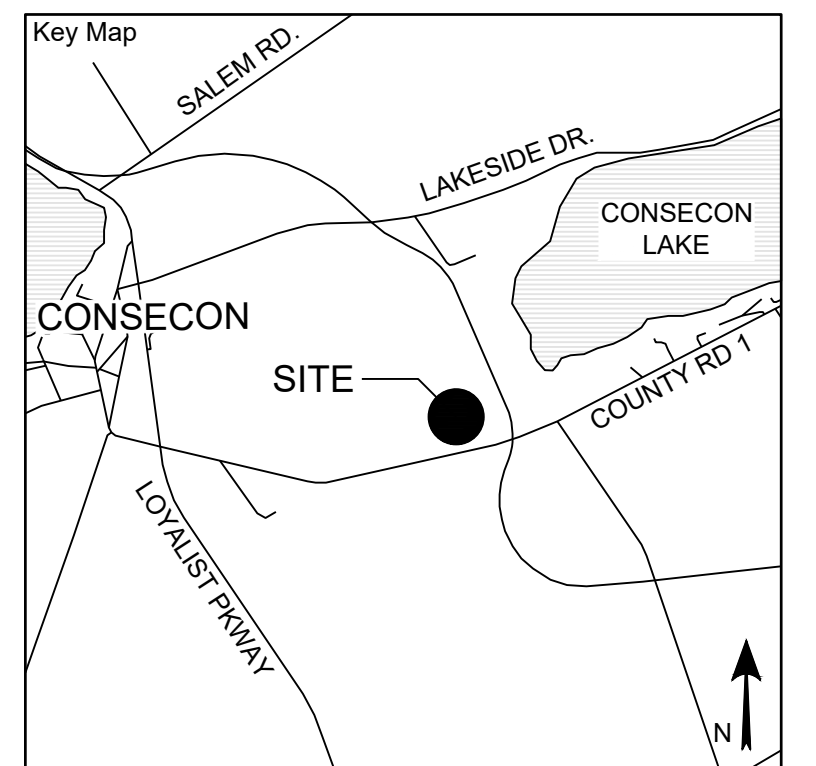
WATERING
ENSURE HERBACEOUS PLANTS ARE THOROUGHLY WATERED AT TIME OF PLANTING, CONTINUE WATERING AS REQUIRED TO PROVIDE ADEQUATE MOISTURE FOR THE DURATION OF THE SPECIFIED MAINTENANCE DURING ESTABLISHMENT PERIOD.



D4 HERBACEOUS PLANTING
1:25



No.	Issues and Revisions	Date
1.	ISSUED FOR REVIEW	2025-01-24
2.	ISSUED FOR REVIEW	2025-01-30
3.	ISSUED FOR REVIEW	2025-01-31
4.	ISSUED FOR SPA	2025-10-08



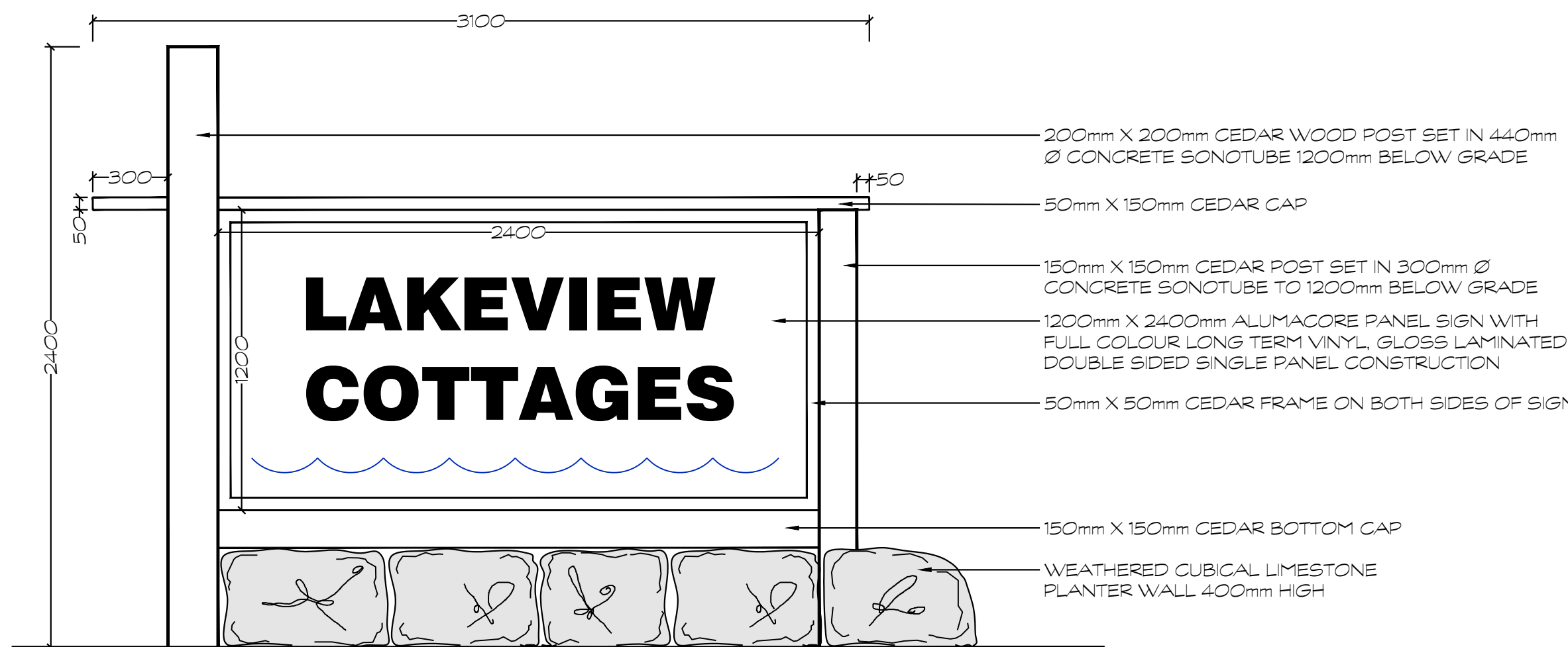
Project Notes
This design and drawing are the property of The Scott Wentworth Landscapes Group Ltd. and are not to be copied or used for construction purposes without the Landscape Architect's express written consent.
The contractor shall check and verify all dimensions and report any discrepancies, error, or omissions to the Landscape Architect prior to commencing work.
Base plan information taken from Site Plan provided by: Company Name: THE GREER GALLOWAY GROUP INC. CONSULTING ENGINEERS Dated: 10/06/2024

Wentworth Landscapes
13392 Loyalist Parkway R.R.1, Picton ON K0K 2T0
613.547.3772

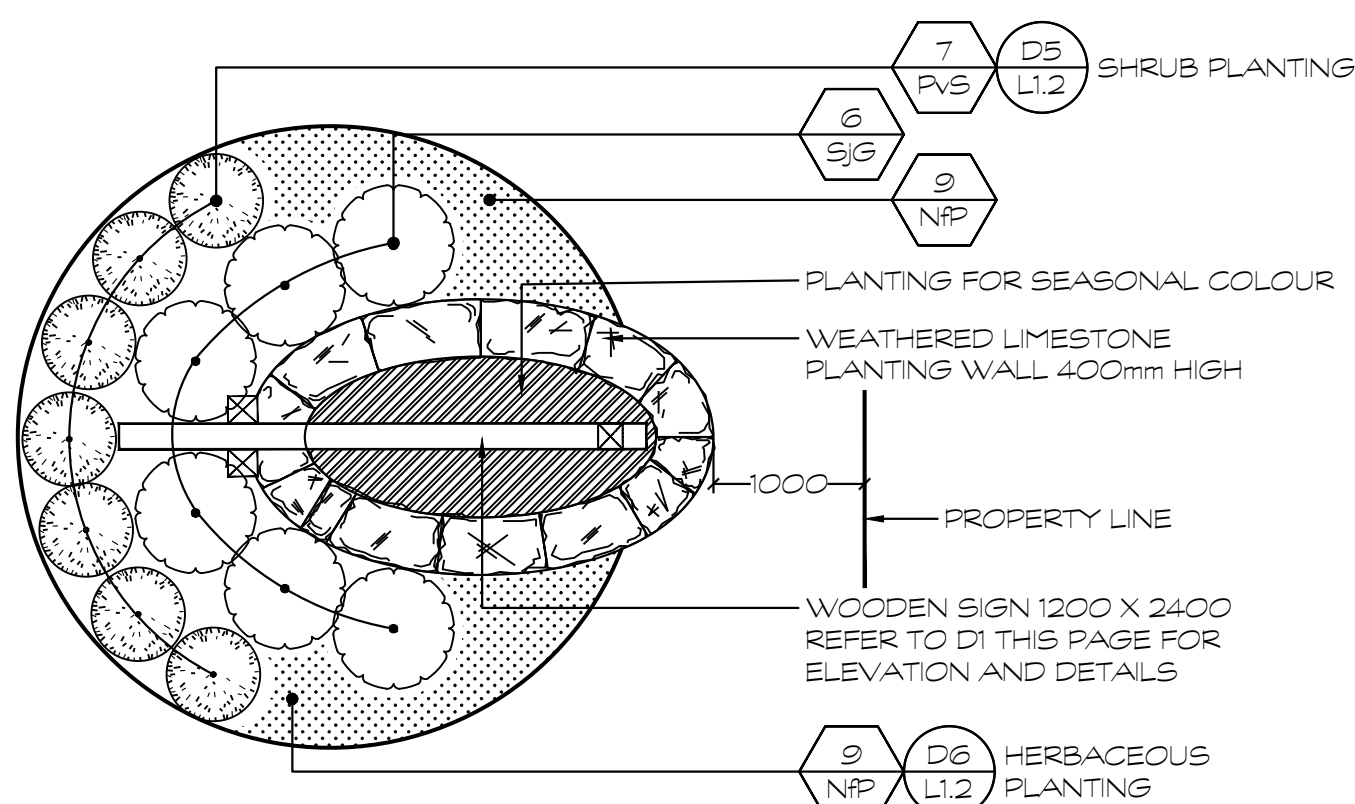
Consultants



Client AZZORYPA GROUP INC.	
Project LAKEVIEW COTTAGES	
Project Location 5738 COUNTY RD. 1 CONSECON, PEC	
Drawing Title LANDSCAPE DETAILS	
Scale AS NOTED	
Date 2025-01-17	Plot Date 2025-10-08
Designed By SW	Drawn By LT
Approved By CR	Drawing Number
Project Number 25000-DC	L2.0



D5 FRONT ENTRANCE SIGN ELEVATION
1:20



D6 FRONT ENTRANCE SIGN PLANTING
1:50