

An architectural rendering of a large, modern school building with a brick and white facade. The building has a flat roof with several HVAC units. A large parking lot with several cars is situated in front of the building. A green lawn area is visible to the left of the building. The scene is set in a sunny, clear environment with shadows cast on the ground.

SvN

Queen Elizabeth School

35 Barker Street

Public Information Centre
November 6, 2025

We respectfully acknowledge that we are gathered on the traditional territory of the Anishnaabeg (Michi Saagiig), Wendat (Huron) and Haudenosaunee (Six Nations) peoples, who through migratory and settlement patterns, have been present in Prince Edward County for hundreds and thousands of years. Prince Edward County is adjacent Mohawks of the Bay of Quinte First Nation.

We also acknowledge that Prince Edward County is part of Treaty 20 and is home to many Indigenous peoples today. We commit to learning from and working alongside Indigenous communities to support reconciliation and respect for the land.

- 6 pm** Participant registration, display boards available for review (15 mins)
- 6:15 pm** Opening Remarks from County (5 mins)
- 6:20 pm** Presentation by SvN and New View Holdings (20 mins)
- 6:40 pm** Q&A (20 mins)
- 7:00 pm** Focused Discussions (30-40 mins)
- 7:30 pm** Closing Remarks

Elis Ziegler, *Affordable Housing Supervisor*

Mayor Steven Ferguson, *Mayor, Prince Edward County*

Meet the Project Team:

Developer Tim Neeb

New View Holdings Alan Hirschfield

Planning Consultant Kelly Graham, Senior Associate, Planning

SvN Architects + Planners Nicole Dilisi, Senior Planner

Traffic Consultant David Angelakis, Senior Project Manager

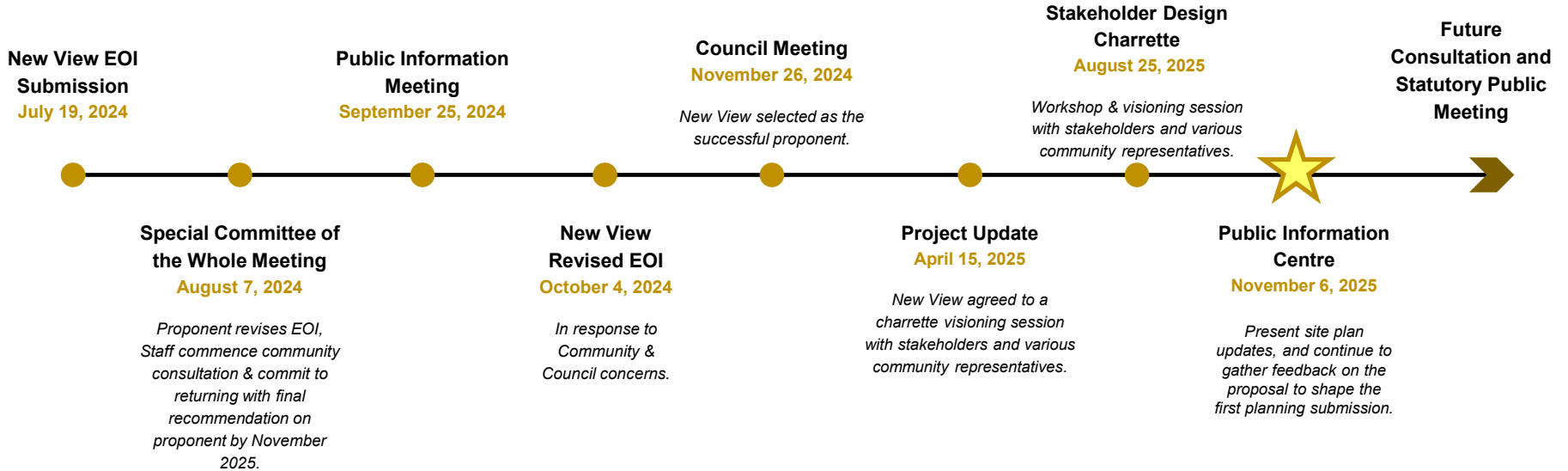
R.J Burnside Cindy Chung, Transportation Engineer

Landscape Consultant Victoria Taylor, Principal

VTLA Natasha Varga, Landscape Architect



Project Timeline



The purpose of the Charrette was to discuss concerns and objectives in a small group setting to shape the proposal.

Key Themes



Housing and Affordability



Community Hub Programming



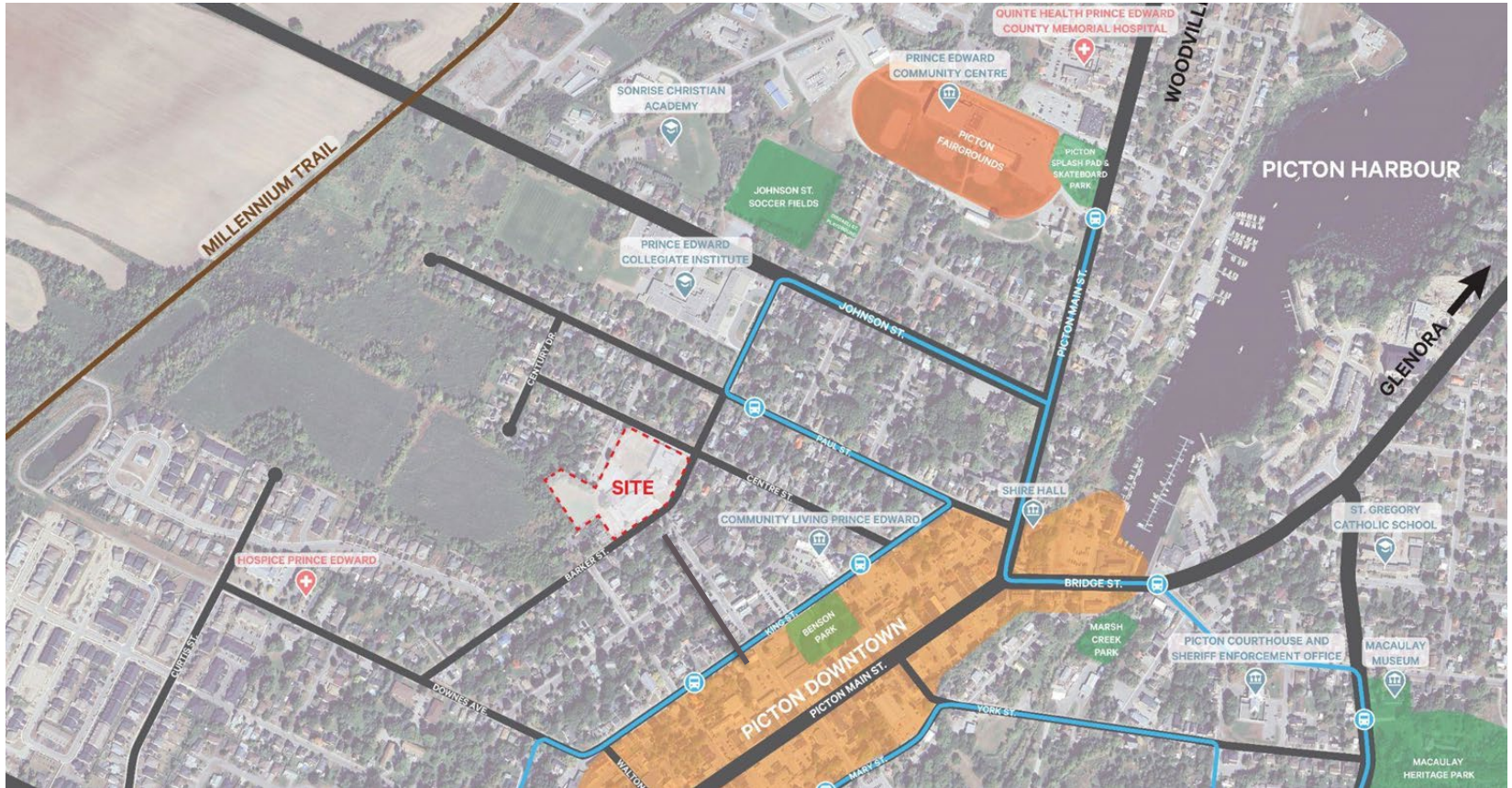
Building Design



Landscape and Public Amenities



Traffic and Circulation





Key Changes:

- Building D (Phase 2) increased in height from 3 to 4 storeys.
- Increase in units from 198 to 211.
- Relocation of Community Gardens.
- Parking Reconfiguration and addition of green buffers to break up paved area.

Balancing density, height, and affordability:

SvN



View of Bld A, HUB, Parkette, and Bld B

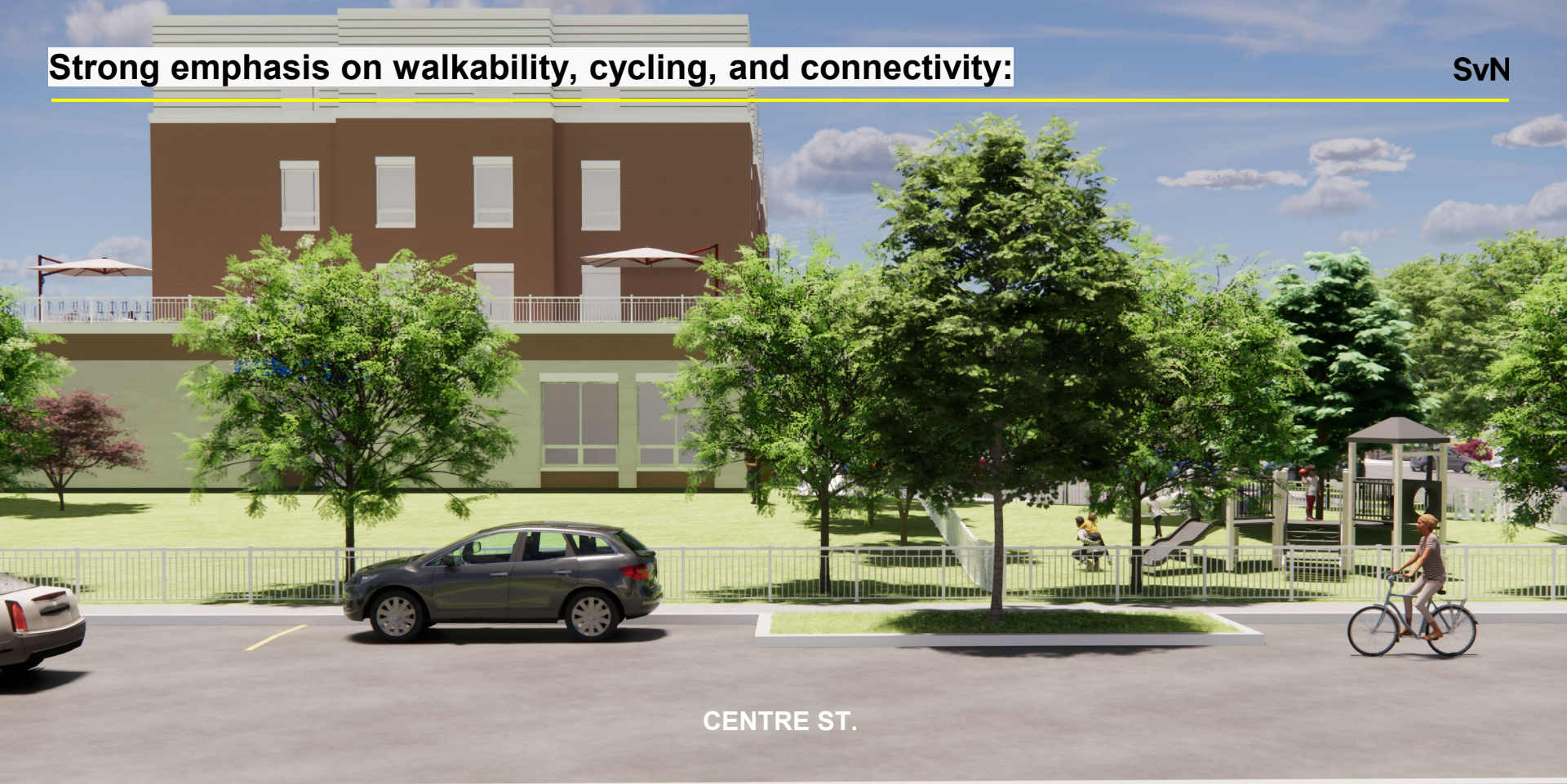
Queen Elizabeth School PIC | November 6, 2024



View of Bld C, from parking lot

Strong emphasis on walkability, cycling, and connectivity:

SvN



CENTRE ST.

View of Bld A, and Parkette, from Centre St.

Queen Elizabeth School | PIC | November 6, 2025

Greenspace and tree canopy as priorities

SvN



View of parking lot, looking North

Queen Elizabeth School | PIC | November 6, 2025



Centre St., looking S. on Elm

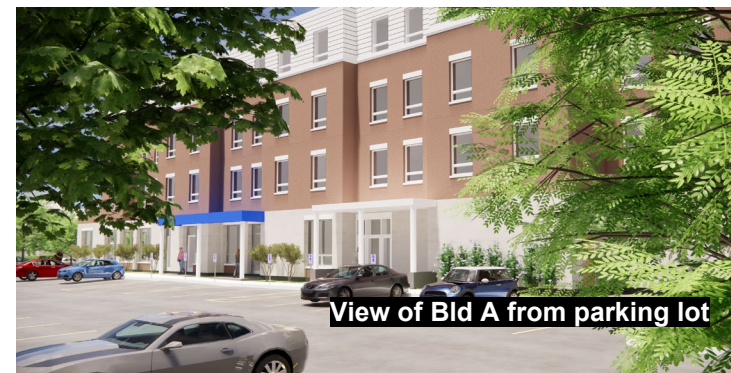
Community Hub as a cornerstone

SvN



View from project entrance, North along Barker St.

Queen Elizabeth School | PIC | November 6, 2025



View of Bld A from parking lot

Traffic and parking management is critical



Be Polite – show respect to all participants

Don't Speak Over Others – everyone gets a voice

Be Open-Minded – embrace unexpected ideas

Listen Actively – no rehearsing rebuttals while others talk

Focus on Solutions – not just problems

Honour all Contributions – keep discussions balanced

Use “Yes, and…” – build on ideas collaboratively

We invite you to join us for two focused discussions:

- Planning & Design
- Traffic & Transportation

Please visit the station corresponding to the topic you'd like to discuss, and engage with members of the project team at each station.

SvN

www.svn-ap.com