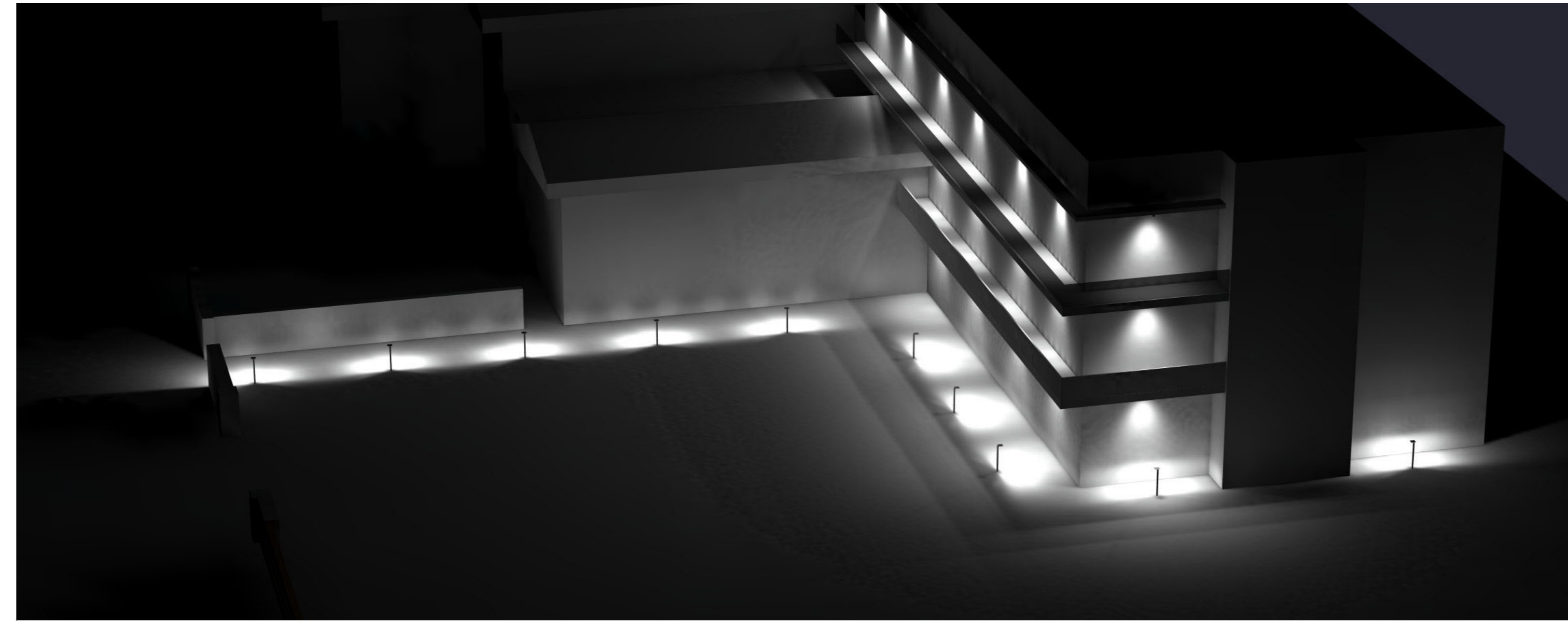
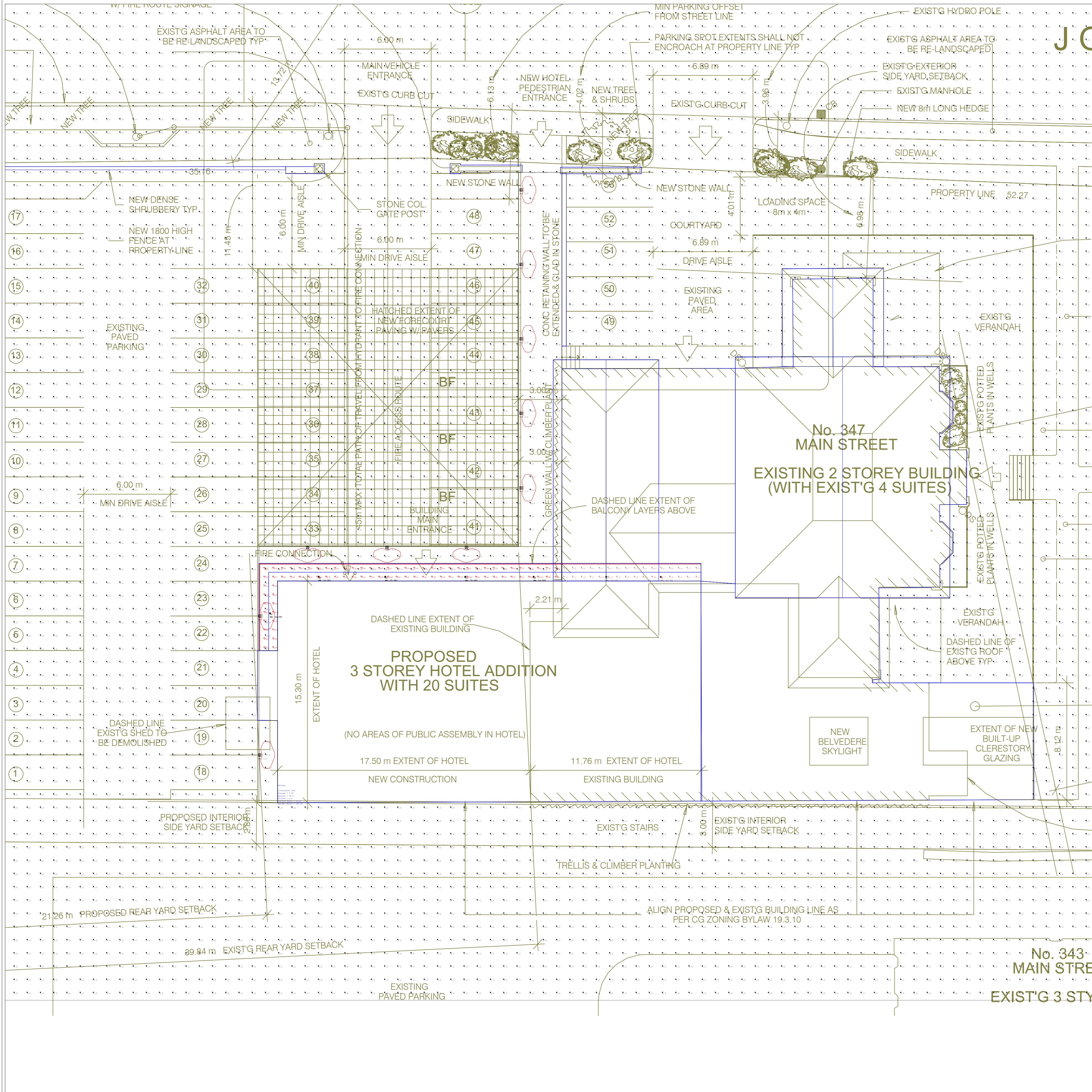


Render Image - View Name : RenderViewpoint\_2

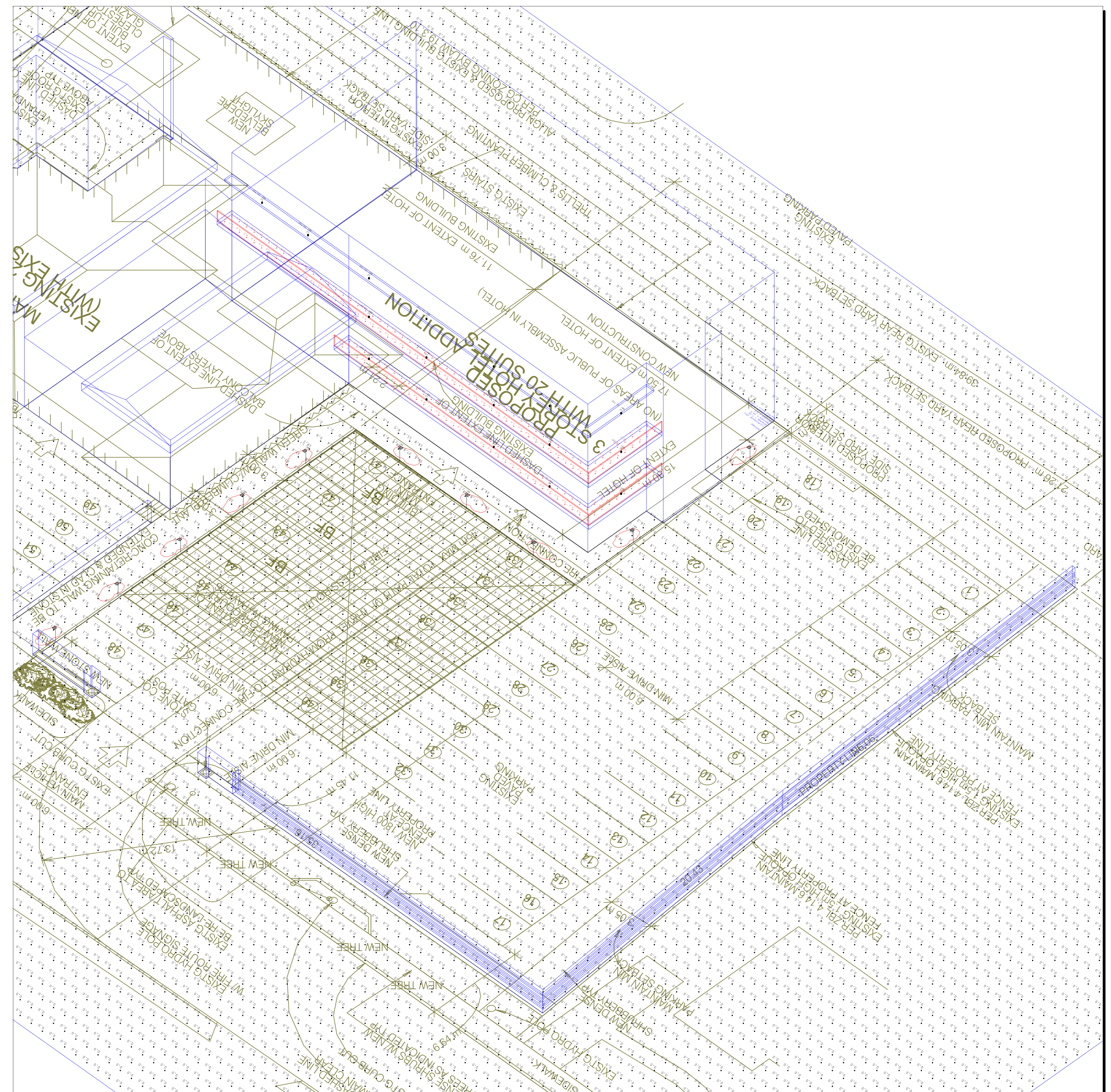


Render Image - View Name : RenderViewpoint\_3

- NOTES:
1. Photometric calculation values provided herein are for reference purposes only and do not represent a guarantee of performance of the luminaire(s) indicated for a given room, space, or area. All calculations were performed using methods and software as recommended by the Illumination Engineering Society of North America (IESNA) and/or best industry practices. The accuracy of this calculation is dependent on many factors including, but not limited to: accuracy of Architectural/Design information such as room dimension, surface finishes, reflectances, materials, etc.; accuracy of Manufacturer photometric information; and accuracy of parametric information such as mounting height, configuration, etc. Real-world environmental factors such as dust and dirt, power quality, ambient temperature, etc. can also significantly affect luminaire performance. As such, actual photometric performance of indicated luminaire(s) may differ from the calculated performance presented.
  2. This photometric analysis has been provided in good faith and includes all relevant data available at the time it was performed but it does not carry any warranty as to the accuracy or code compliance of the design. The Engineer of Record (EOR)/Architect of Record (AOR) for the associated project shall bear all responsibility for code compliance, lighting system design/performance/compatibility and installation methods. TPL Lighting is not responsible for any losses resulting from the use in-whole or in-part of this photometric analysis.
  3. This photometric analysis shall not constitute as a "Construction" or "Contract" document. TPL Lighting assumes no liability with respect to any reliance placed on this document in this regard. If this document is incorporated into or used as part of a "construction" or "contract" document package, the EOR/AOR for the associated project assumes the entire risk as to the accuracy, completeness, reliability or otherwise of the information contained in said document package.
  4. Light Loss Factors (LLF) have been calculated based on a multiplication of factors such as Lamp Lumen Depreciation (LLD), Lamp Dirt Depreciation (LDD), Ambient Temperature (T), Ballast Factor (BF), etc. in accordance with the recommendations of the IESNA and/or the luminaire manufacturer(s). LLFs for each luminaire is indicated in the Luminaire Schedule.
  5. Unless noted otherwise, surface reflectances of 70% (ceiling), 50% (walls) and 20% (floors) have been used for the purposes of this calculation.
  6. Unless noted otherwise, calculation points are measured at tread level for circulation spaces and at 30" (762mm) AFF for all work spaces.



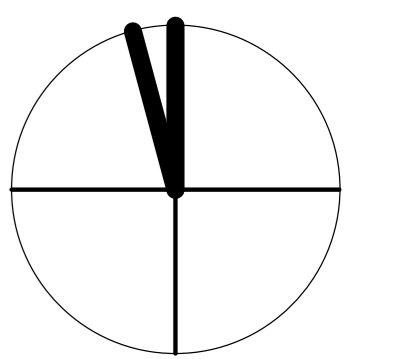
Photometric - Reflectances 80/50/20



Photometric - Reflectances 80/50/20

Calculation Summary						
Label	CalcType	Units	Avg	Max	Min	Avg/Min
Lower Balcony_Top	Illuminance	Fc	5.62	11.1	0.5	11.24
Site Planar	Illuminance	Fc	0.16	39.9	0.0	N.A.
Upper Balcony_Top	Illuminance	Fc	5.59	12.7	0.2	27.95
Pathway	Illuminance	Fc	7.24	39.9	0.2	36.20

Luminaire Schedule						
Symbol	Tag	Qty	LLF	Label	Description	Arrangement
⊙	L2	17	0.850	24409K3 BEGA IES		12
⊠	L1	10	0.850	99058K3 BEGA IES		14.5



ISSUED RECORD:	
No.	YYMMDD
1	FOR CLIENT REVIEW
2	25 11 10 FOR SITE PLAN APPLICATION
3	
4	
5	
6	
7	
8	

TPL Lighting  
25 Ripley Ave, Toronto, ON  
Telephone: 416-538-8989  
Email: info@tplighting.com

agent: JG drawn: MA  
date: 2025-11-06  
project name:  
The Cape Picton

drawing:  
**SPCA-7**