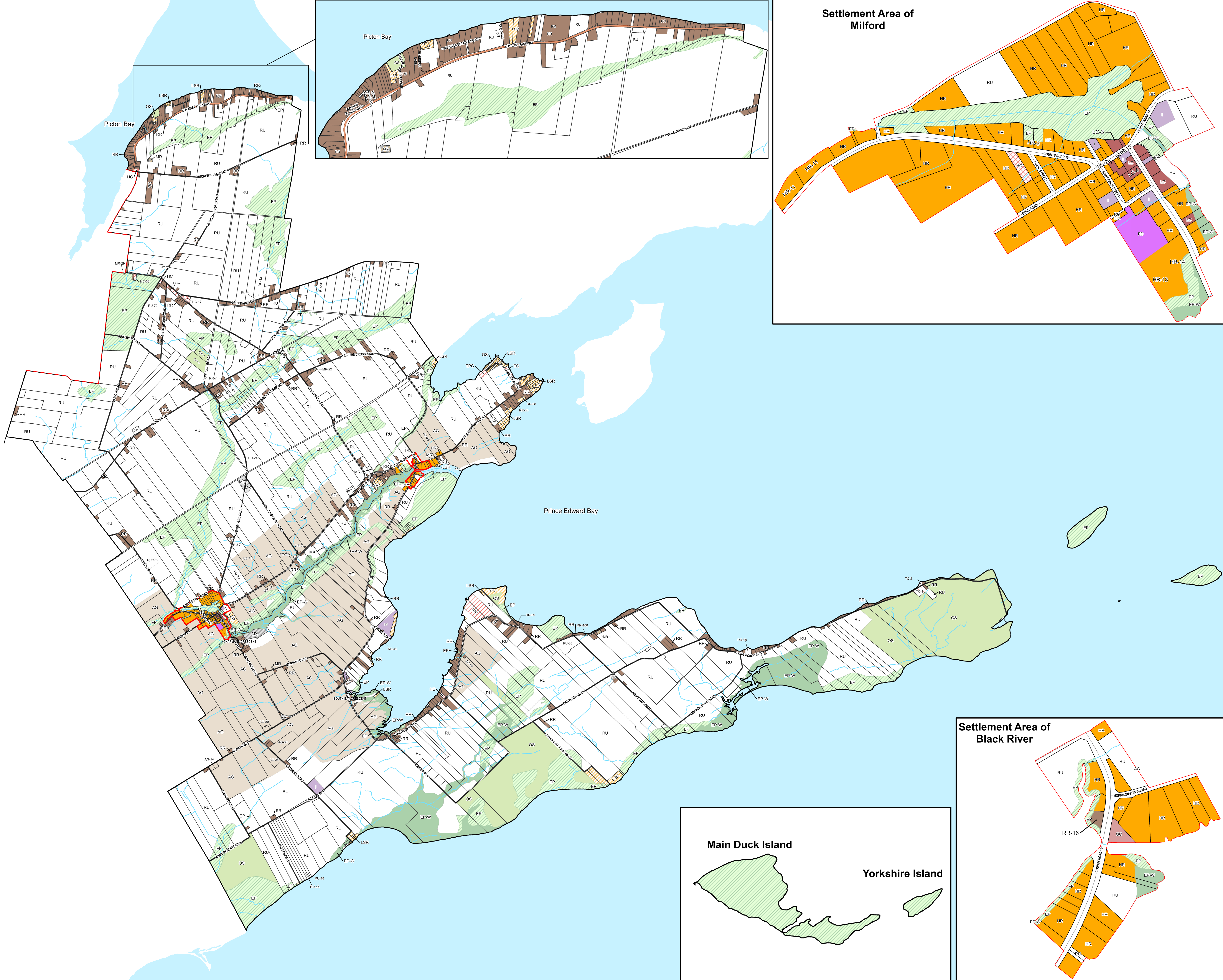




Prince Edward County Zoning By-law Review

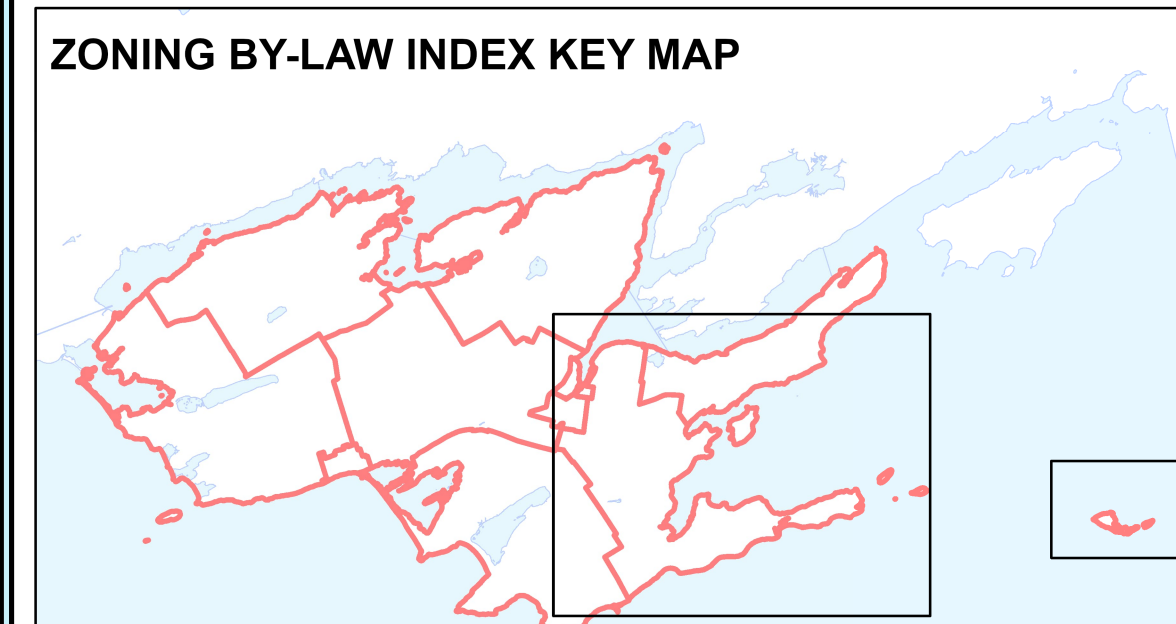
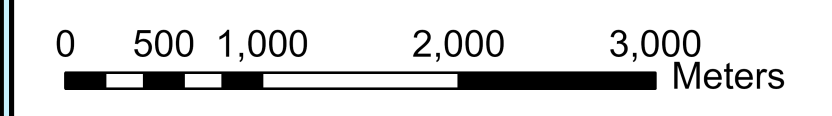
Long Point SCHEDULE A-8 ZONING BY-LAW No. 140-2025 FINAL



- Zones**
- Agricultural and Rural**
- AG - Agricultural
 - RU - Rural
- Urban Residential**
- R1 - Urban Residential 1
 - R2 - Urban Residential 2
 - R3 - Urban Residential 3
 - R4 - Urban Residential 4
- Rural Residential**
- HR - Hamlet Residential
 - LSR - Limited Service Residential
 - RR - Rural Residential
 - MHR - Mobile Home Residential
- Commercial**
- UC - Urban Commercial
 - GC - General Commercial
 - LC - Local Commercial
 - HC - Highway Commercial
 - TC - Tourist Commercial
 - TPC - Trailer Park Commercial
- Industrial**
- MG - General Industrial
 - MH - Heavy Industrial
 - MR - Rural Industrial
 - MX - Extractive Industrial
 - MD - Waste Disposal Industrial
- Institutional and Environmental**
- I - Institutional
 - OS - Open Space
 - EP - Environmental Protection
 - EP-W - Environmental Protection - Provincially Significant Wetlands
- Future Development**
- FD - Future Development

- Roads & Other Features**
- Settlement Areas
 - Parcels
 - Provincial Highway
 - Waterbodies
 - Local
 - Watercourse

Notes: Special provisions apply, refer to Zoning By-law text:
 H - Holding Zone
 T - Temporary Use
 # - Exception Zone



County Council Adoption: November 10, 2025
 Source: Prince Edward County, Ontario GeoHub
 Projection: NAD83 UTM Zone 18 N