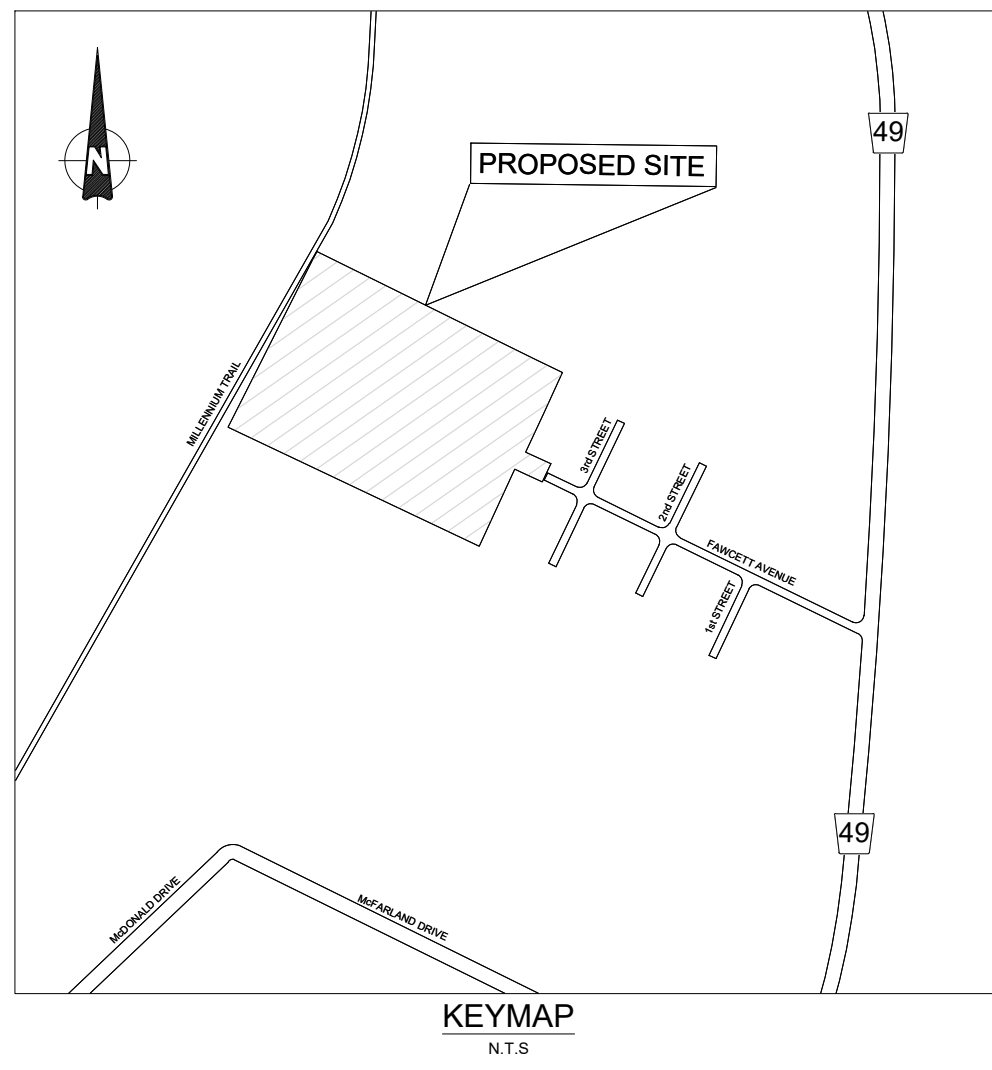


DRAFT PLAN OF SUBDIVISION
FAWCETTville SUBDIVISION
 PART OF LOT 64
 COUNTY OF PRINCE EDWARD
 PICTON, ON

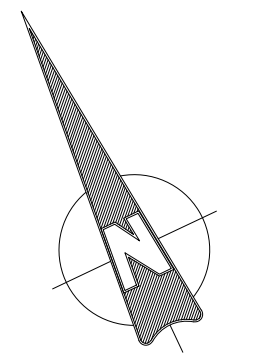
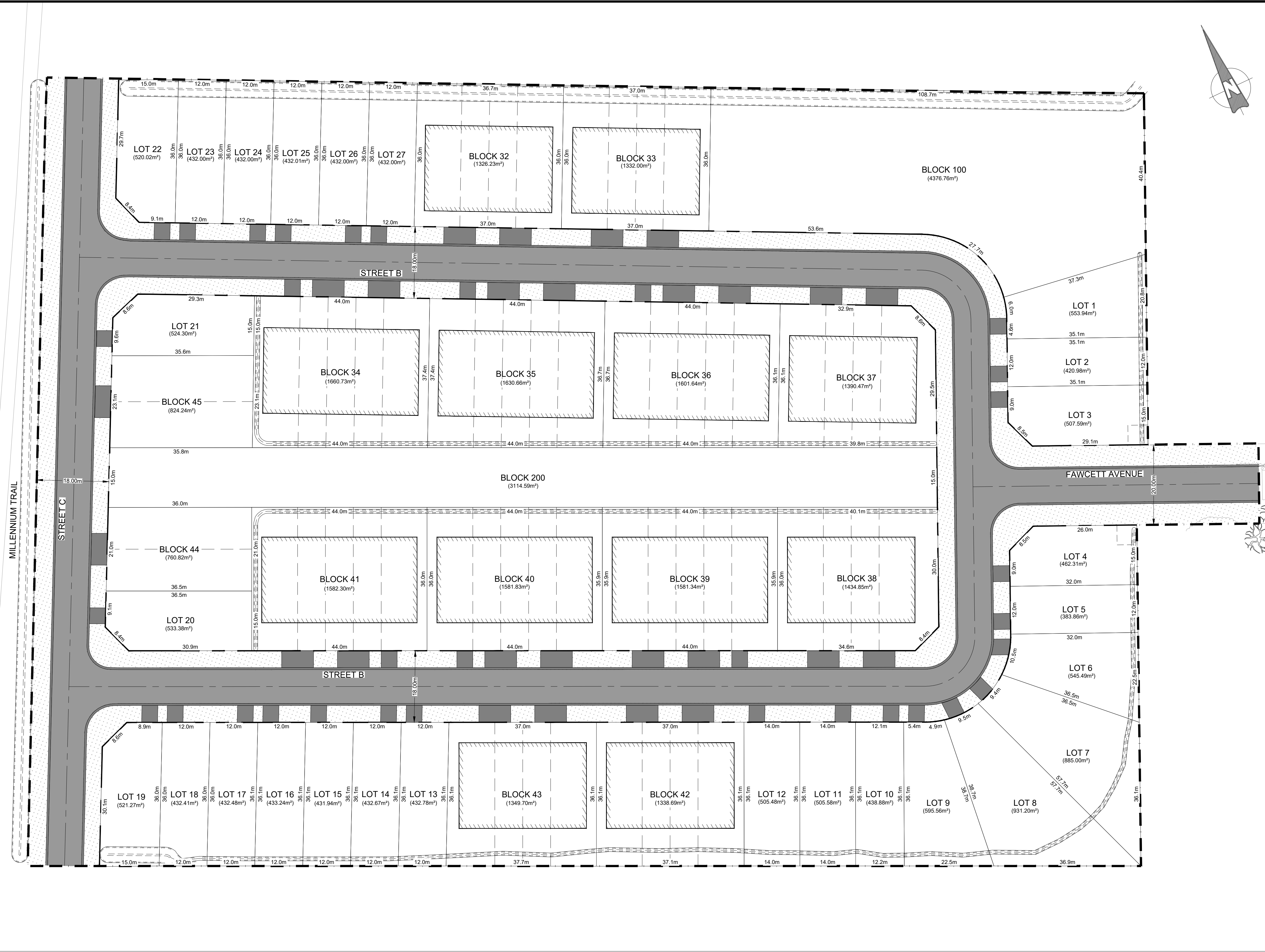
METRIC SCALE

METRIC NOTE
 DISTANCES SHOWN ON THIS PLAN ARE IN METRES AND
 CAN BE CONVERTED TO FEET BY DIVIDING BY 0.3048.

CONTOUR DATA
 CONTOUR AND TOPOGRAPHIC INFORMATION
 GENERATED USING INFORMATION PROVIDED BY ANILEY
 GRAHAM AND ASSOCIATES.



SITE LAND USE	AREA(ha)	AREA%	UNITS
LOTS 1 - 27 - SINGLE DETACHED LOTS	1.45	26.41	27
BLOCKS 32 - 42 - TOWNHOUSES	1.84	33.51	54
BLOCKS 44 & 45 - SEMI DETACHED LOTS	0.10	1.82	4
BLOCK 100 - SWM FACILITY	0.45	8.20	
BLOCK 200 - GREEN CORRIDOR	0.31	5.65	
RIGHT OF WAY	1.34	24.41	
SITE TOTAL	5.49 ha	100.0%	85



K:\Projects\17533 - Fawcettville Subdivision\17533-1 Project\Drawing_civil\current\17533-Draft Plan.dwg 2025-11-20 2:20 PM

ADDITIONAL INFORMATION UNDER SECTION 51 (17) OF THE PLANNING ACT

- a. SEE SURVEYORS CERTIFICATE.
- b. AS SHOWN ON DRAFT PLAN.
- c. AS SHOWN ON DRAFT PLAN.
- d. SEE LAND USE SUMMARY.
- e. SEE KEY PLAN.
- f. AS SHOWN ON DRAFT PLAN.
- g. AS SHOWN ON DRAFT PLAN.
- h. MUNICIPAL WATER AND MUNICIPAL SEWER
- i. REFER TO THE GEOTECHNICAL REPORT PREPARED BY ANILEY GRAHAM AND ASSOCIATES
- j. AS SHOWN ON DRAFT PLAN.
- k. AS SHOWN ON DRAFT PLAN.
- l. GARBAGE COLLECTION, FIRE PROTECTION, ROAD MAINTENANCE, SCHOOL BUSES, ETC.
- m. AS SHOWN ON DRAFT PLAN.

SURVEYOR'S CERTIFICATE
 I CERTIFY THAT THE BOUNDARIES OF THE LAND TO BE SUBDIVIDED ARE CORRECTLY SHOWN.

KEITH WATSON, O.L.S.
 WATSON LAND SURVEYORS Ltd.,
 218 CHURCH STREET, BELLEVILLE, ON.
 (613) 962-9521

OWNER'S CERTIFICATE
 I AUTHORIZE ANILEY GROUP TO PREPARE AND SUBMIT THIS DRAFT PLAN OF SUBDIVISION TO PRINCE EDWARD COUNTY.

ERIC DENOUDEN
 PRESIDENT
 HILDEN HOMES LTD.

REV.#	REVISIONS	DATE	INITIAL
4	REVISIONS TO STREET 'C' RIGHT OF WAY	11/20/2025	JL
3	REVISIONS FOR DRAFT PLAN APPROVAL	08/20/2024	JL
2	REVISED PER COMMENTS RECEIVED (18/07/2024)	07/24/2024	JL
1	REVISED SIGHT TRIANGLES AS PER PEC POLICY	06/13/2024	DC

Not Valid Unless Signed And Dated

SCALE: 1:500
DESIGN: JL
DRAWN: JL
CHECKED: JD
DATE: JULY 2024

FAWCETTville SUBDIVISION
 COUNTY OF PRINCE EDWARD
 PICTON, ON

DRAFT PLAN

CONTRACT No. 17533-1 DWG 17533-1 DP