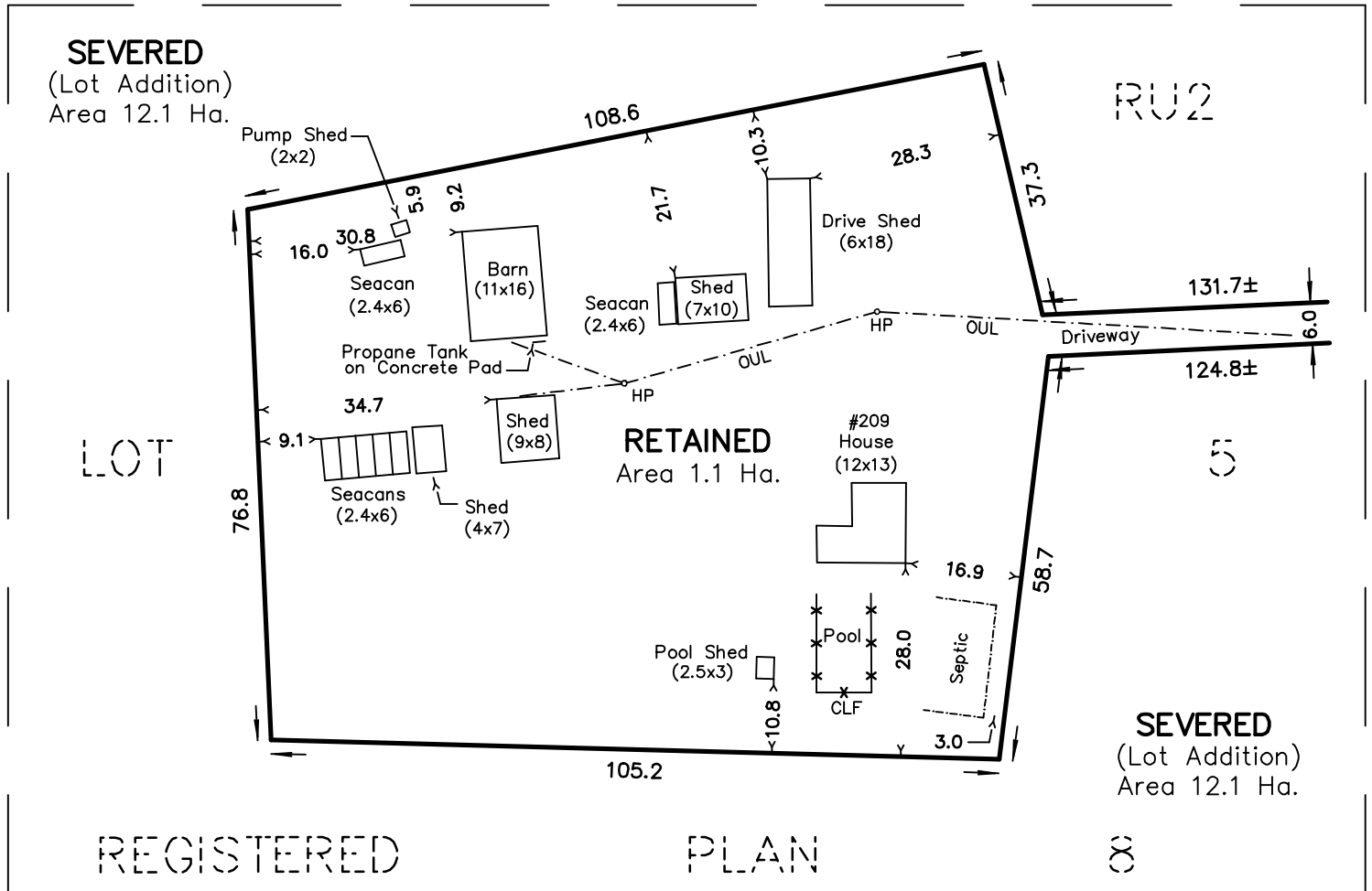
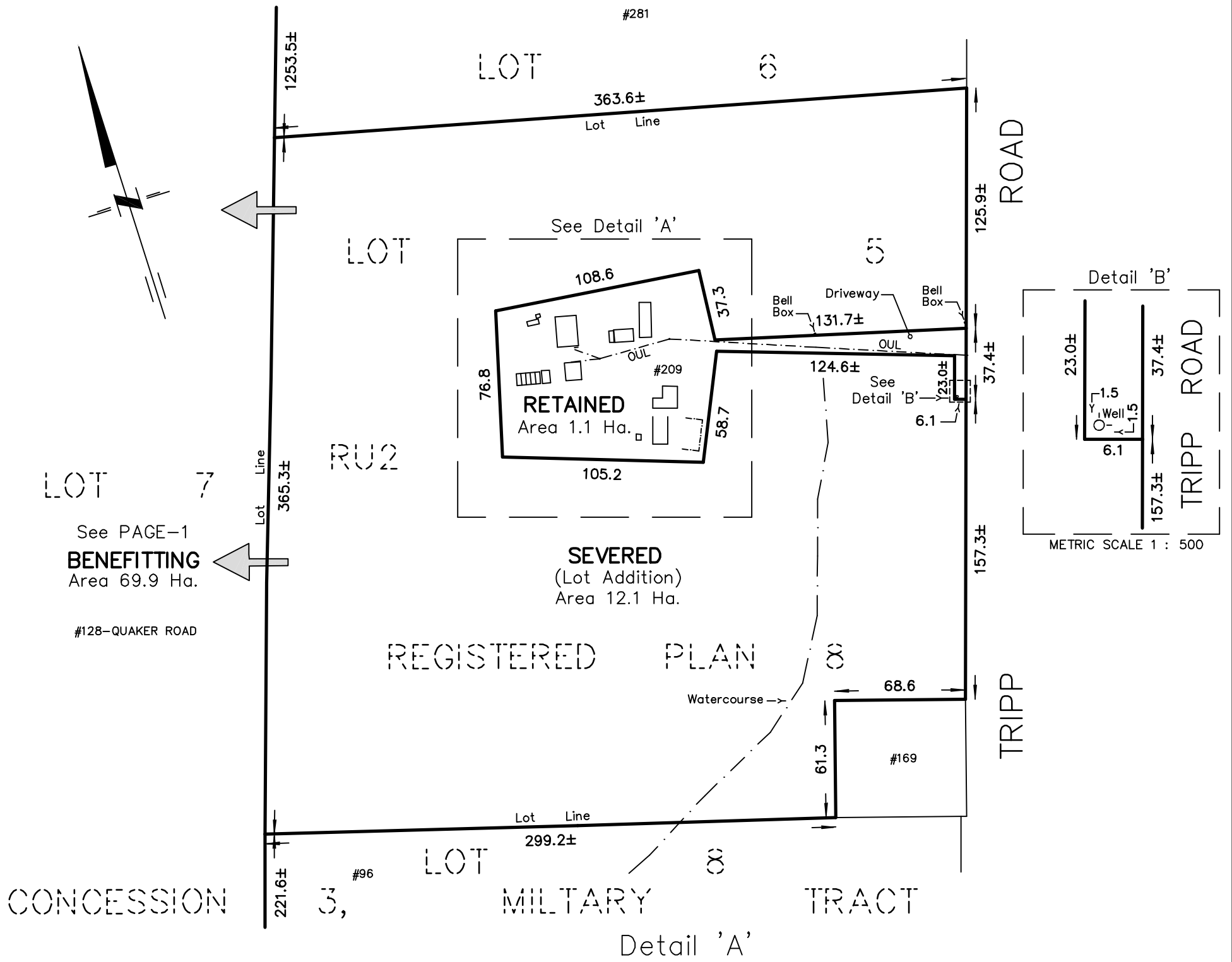


# SKETCH for SEVERANCE APPLICATION PAGE-2

METRIC SCALE 1 : 2500



**NOTES :**

128 QUAKER ROAD & 209 TRIPP ROAD

PART OF LOT 5  
REGISTERED PLAN 8  
PART OF LOT 7  
CONCESSION 3, MILITARY TRACT  
TOWNSHIP OF HALLOWELL  
NOW IN THE MUNICIPALITY OF THE  
COUNTY OF PRINCE EDWARD

DIMENSIONS AND INFORMATION SHOWN ARE DERIVED FROM  
PLANS 47R-924, 47R-3072, 47R-3212, 47R-4113 AND FIELD WORK.

DISTANCES SHOWN ON THIS PLAN ARE IN METRES  
AND CAN BE CONVERTED TO FEET BY DIVIDING BY 0.3048.

**LEGEND :**

HP DENOTES HYDRO POLE  
OUL " OVERHEAD UTILITY LINES  
CLF " CHAIN LINK FENCE

DECEMBER 16, 2025

218 CHURCH STREET  
BELLEVILLE, ONTARIO

**WATSON**  
LAND SURVEYORS Ltd.

K8N - 3C3  
(613) 962 - 9521