

# BLOOMFIELD MAIN STREET REHABILITATION PROJECT



Public Consultation Centre (PCC)

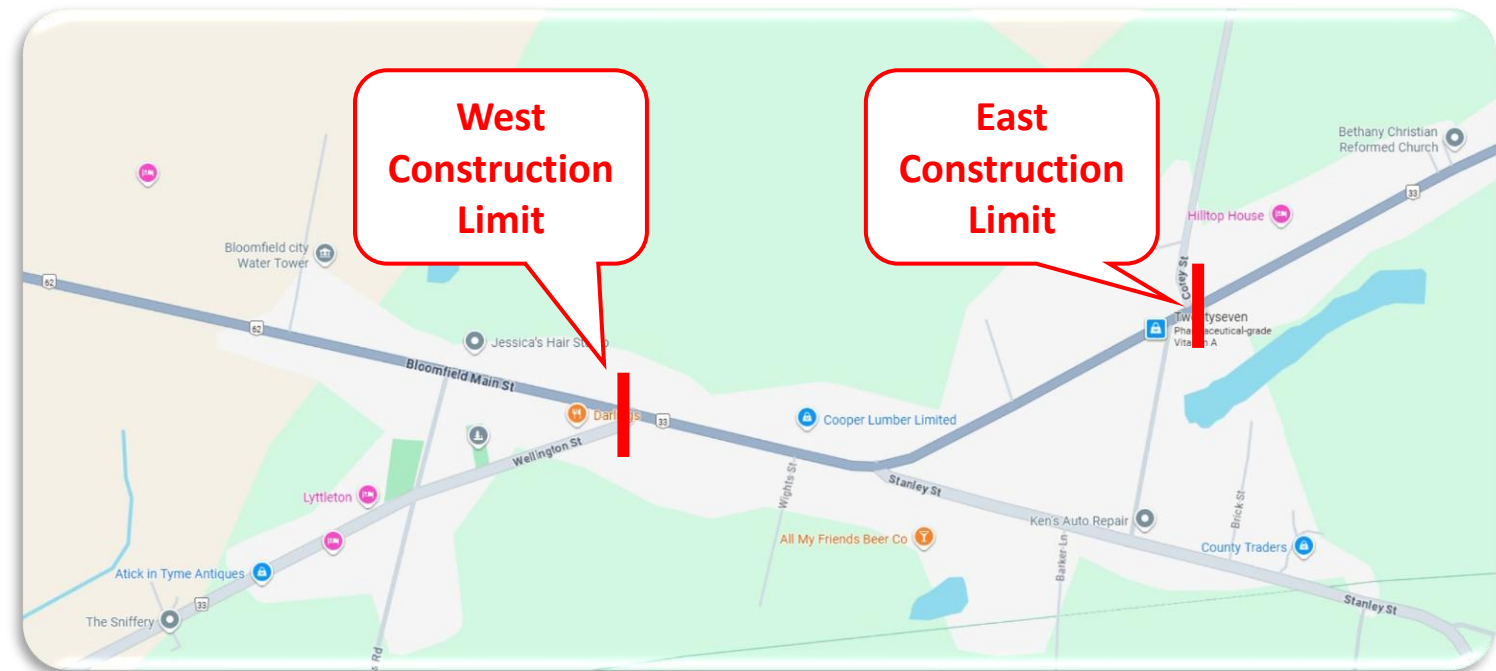
February 2, 2026 @ Bloomfield Town Hall

# PROJECT BACKGROUND

- Approximate project limits from Corey Street to Wellington Street (1.0 km).
- Scope of work to include underground storm sewer repairs, concrete curb and sidewalk repairs followed by hot mix asphalt paving and line painting (like-for-like).
- Detailed design currently underway and construction planned for spring 2026.
- PEC received \$2,058,969 (90%) in provincial funding through the Ministry of Transportation's Connecting Links Program.

## Like-for-Like Project

No changes to existing layout of parking, curb, sidewalk or road. Simply repair/replace.



# SCOPE OF WORK – STORM SEWER

- Closed-Circuit Television (CCTV) inspection identified sections of underground storm sewer that require replacement.
- Important to repair now to protect investment of new asphalt.



*Severe corrosion of corrugated steel pipe compromising structural integrity*



*Severe corrosion of corrugated steel pipe compromising structural integrity*



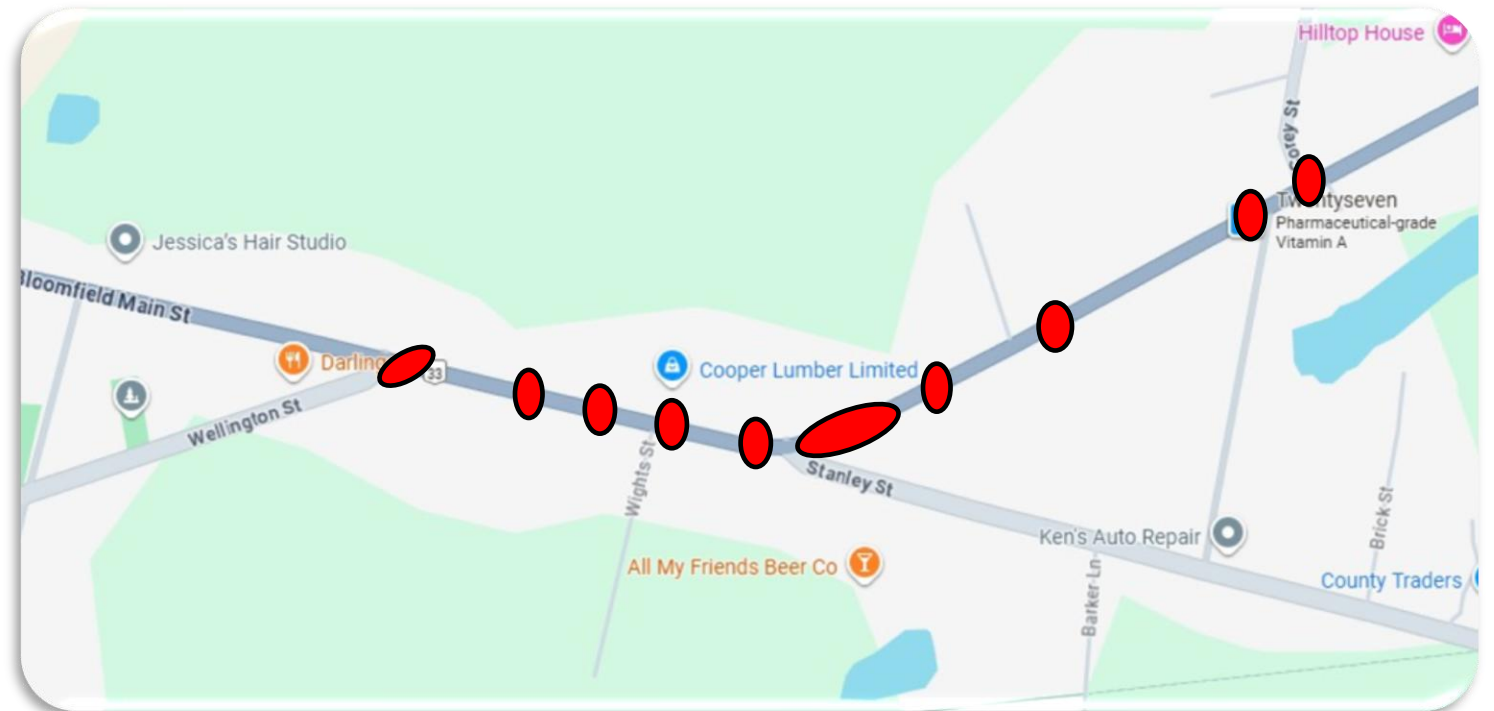
*Cracked and missing section of concrete pipe with joint offset*

# STORM SEWER REPAIR LOCATIONS

- Each section of underground storm sewer replacement is shown on the map below.
- This work will require an excavator to dig a trench at each of these locations.

## Minor Underground Works

Only minor storm sewer repairs. No watermain work needed. No sanitary sewer exists.



# SCOPE OF WORK – SIDEWALK & CURB

- Damaged sections concrete curb and sidewalk will be removed and replaced where needed within the project limits.
- Majority of curb replacement is needed between Stanley Street and Wellington Street.



# SCOPE OF WORK - BOULEVARDS

- Replacement of existing asphalt boulevards will be completed by Option #1 or #2 as shown below.



**Option #1:** Included in the base scope of the contract is asphalt boulevards.



Corey St to Stanley St only

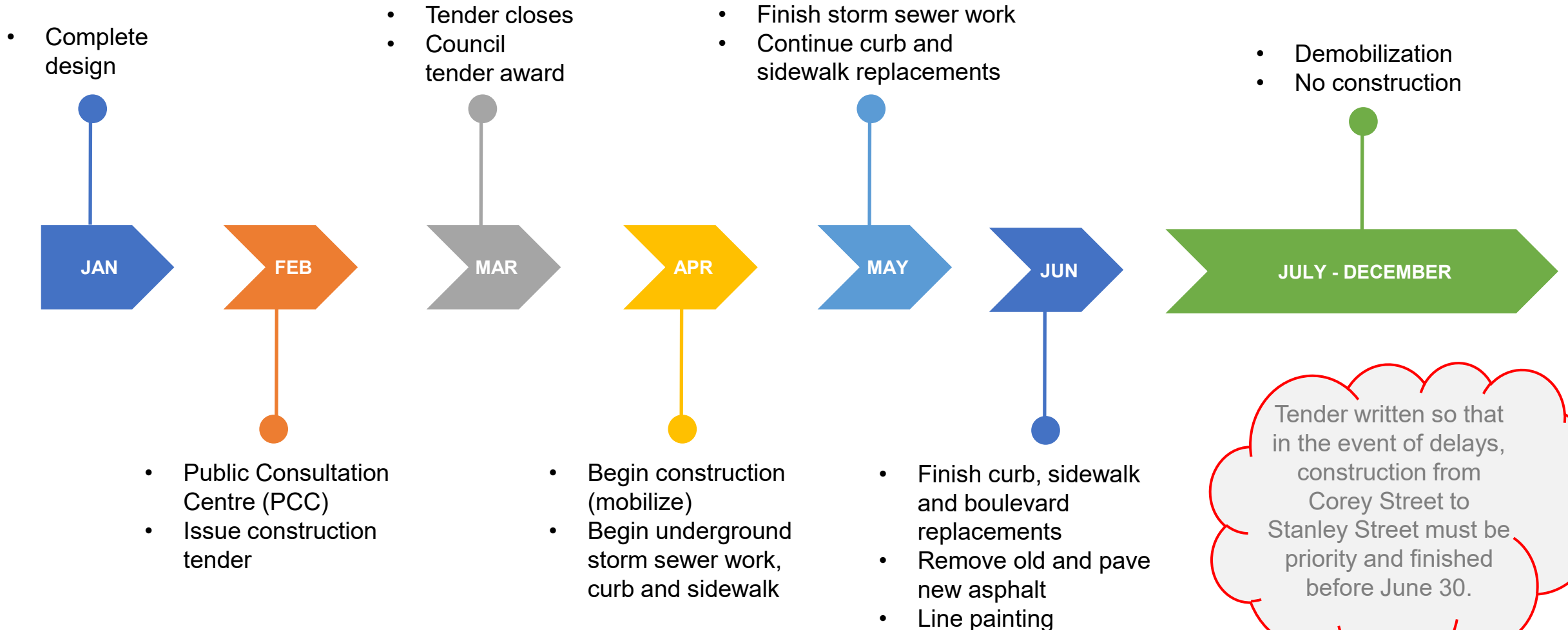
**Option #2:** Upgraded boulevards done with stamped concrete is included in the contract as a provisional item (may be awarded if price is within project budget).

# SCOPE OF WORK - PAVING

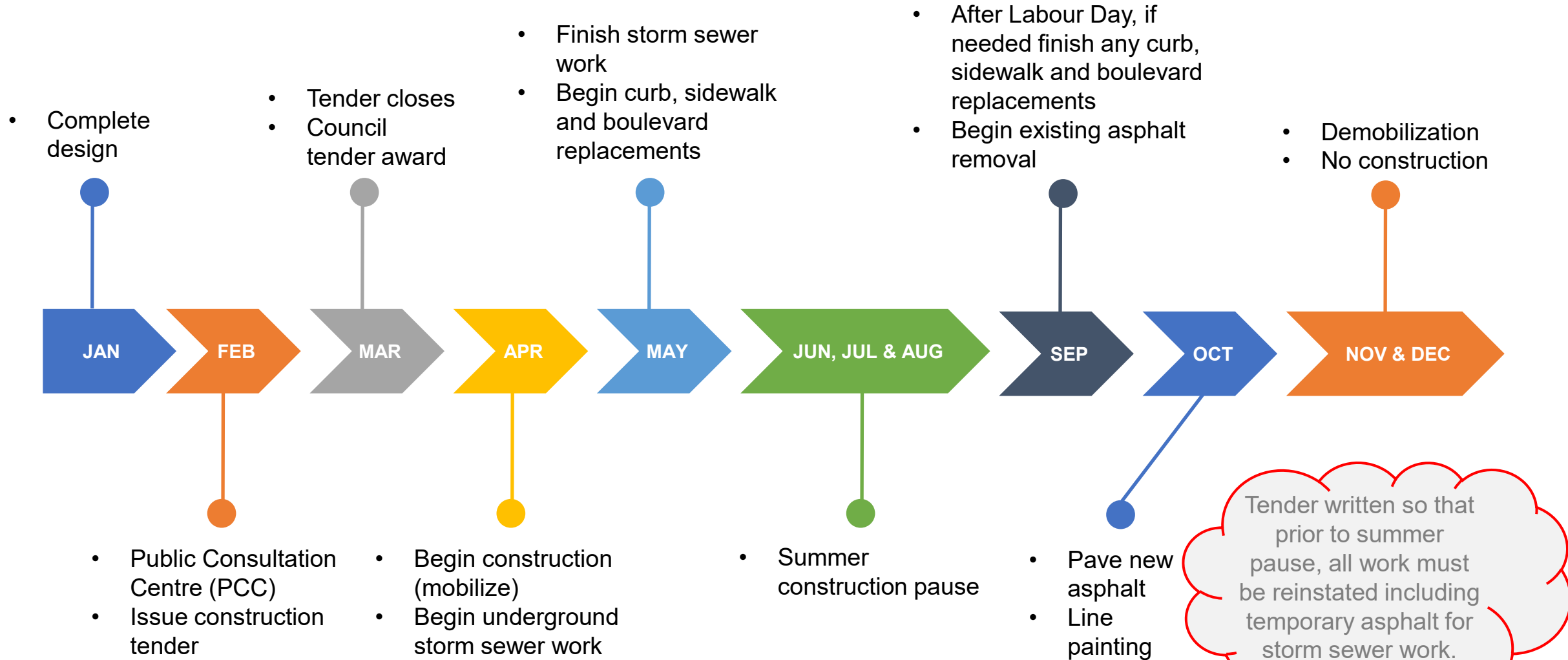
- The full depth of the existing asphalt roadway will be removed and repaved with new hot mix asphalt.
- Following paving, line painting will be completed to match exactly the line markings from before construction (like-for-like).



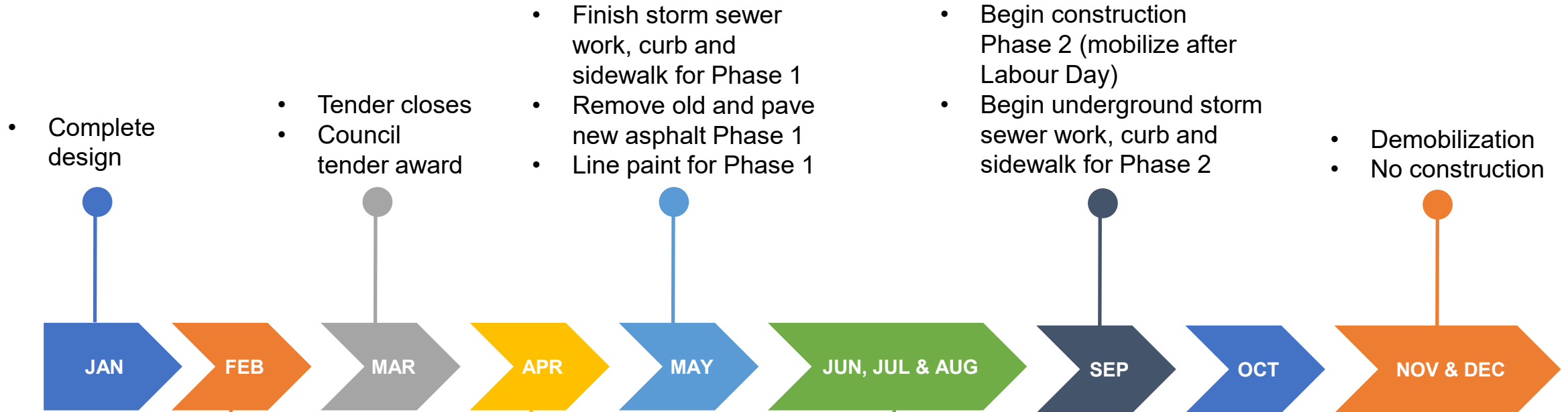
# SCHEDULE #1 (APRIL - JUNE)



# SCHEDULE #2 (SPRING & FALL CONTINUOUS)



# SCHEDULE #3 (SPRING & FALL PHASES)



- Complete design

- Tender closes
- Council tender award

- Finish storm sewer work, curb and sidewalk for Phase 1
- Remove old and pave new asphalt Phase 1
- Line paint for Phase 1

- Begin construction Phase 2 (mobilize after Labour Day)
- Begin underground storm sewer work, curb and sidewalk for Phase 2

- Demobilization
- No construction

- Public Consultation Centre (PCC)
- Issue construction tender

- Begin construction Phase 1 (mobilize)
- Begin underground storm sewer work, curb and sidewalk for Phase 1

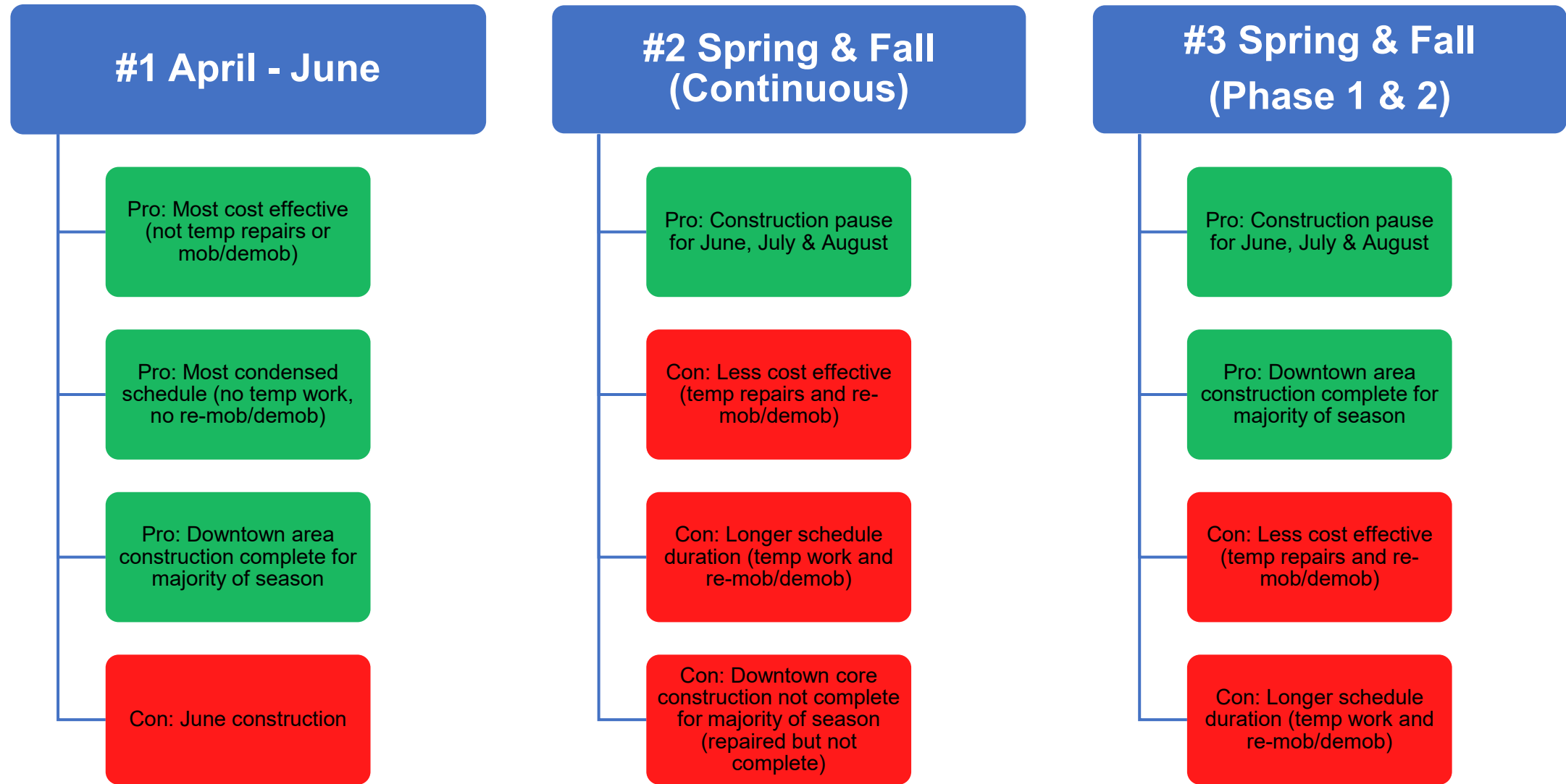
- Summer construction pause

- Finish storm sewer work, curb and sidewalk for Phase 2
- Remove old and pave new asphalt Phase 2
- Line paint for Phase 2

**Phase 1 =**  
Corey St to Duncan St

**Phase 2 =**  
Duncan Street to Wellington St

# SCHEDULE COMPARISON



# TRAVEL IMPACTS



## Pedestrians

- Pedestrian access to business and homes will be maintained at all times.
- No crossing within the Work Zone. In the event that sidewalks require closure, signs will be installed directing pedestrians where to cross.
- During sidewalk repairs, signs will be installed directing pedestrians where to walk.



## Traffic Management

- Traffic may be reduced to one lane along Main Street at times to accommodate construction. In this case, east/west traffic will be alternated by flagging personnel. Please expect delays and please be patient.
- Portable variable messaging and advisory signs will be installed at numerous locations.
- Construction staff and construction flagging will be utilized to direct traffic.



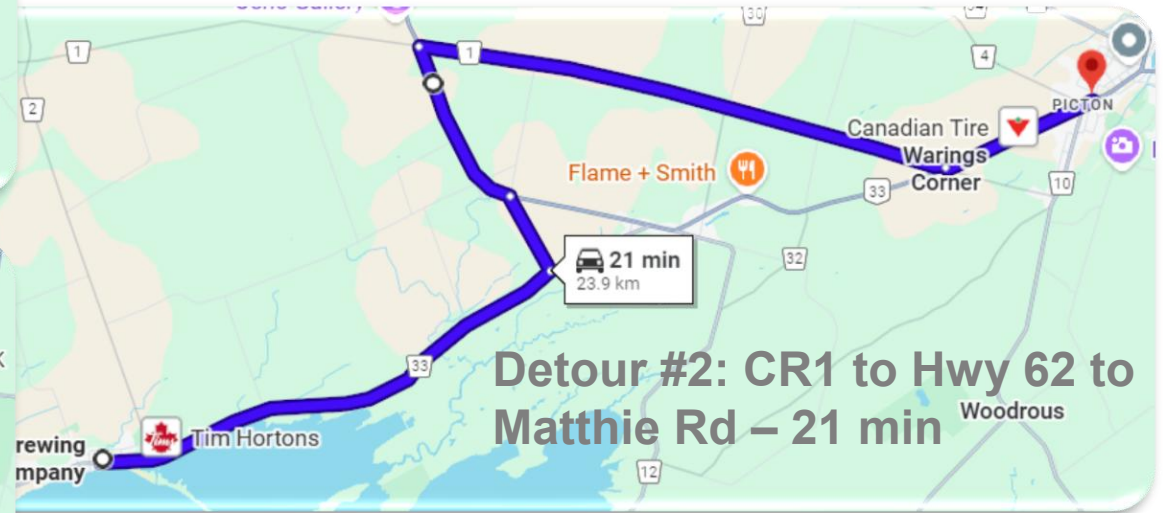
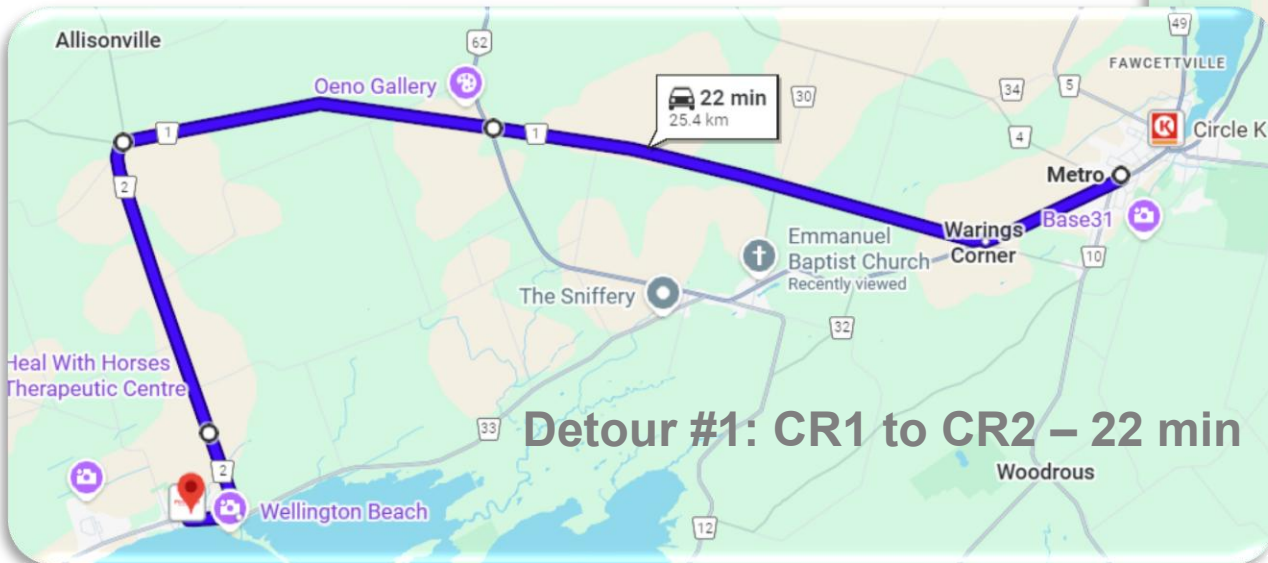
## Deliveries

- PEC and the Contractor will work with affected businesses and area property managers to accommodate deliveries, loading and passenger drop off/pick up activities during construction. Please call us know if you have any specific requirements.

# ADVANCED DETOUR PLAN

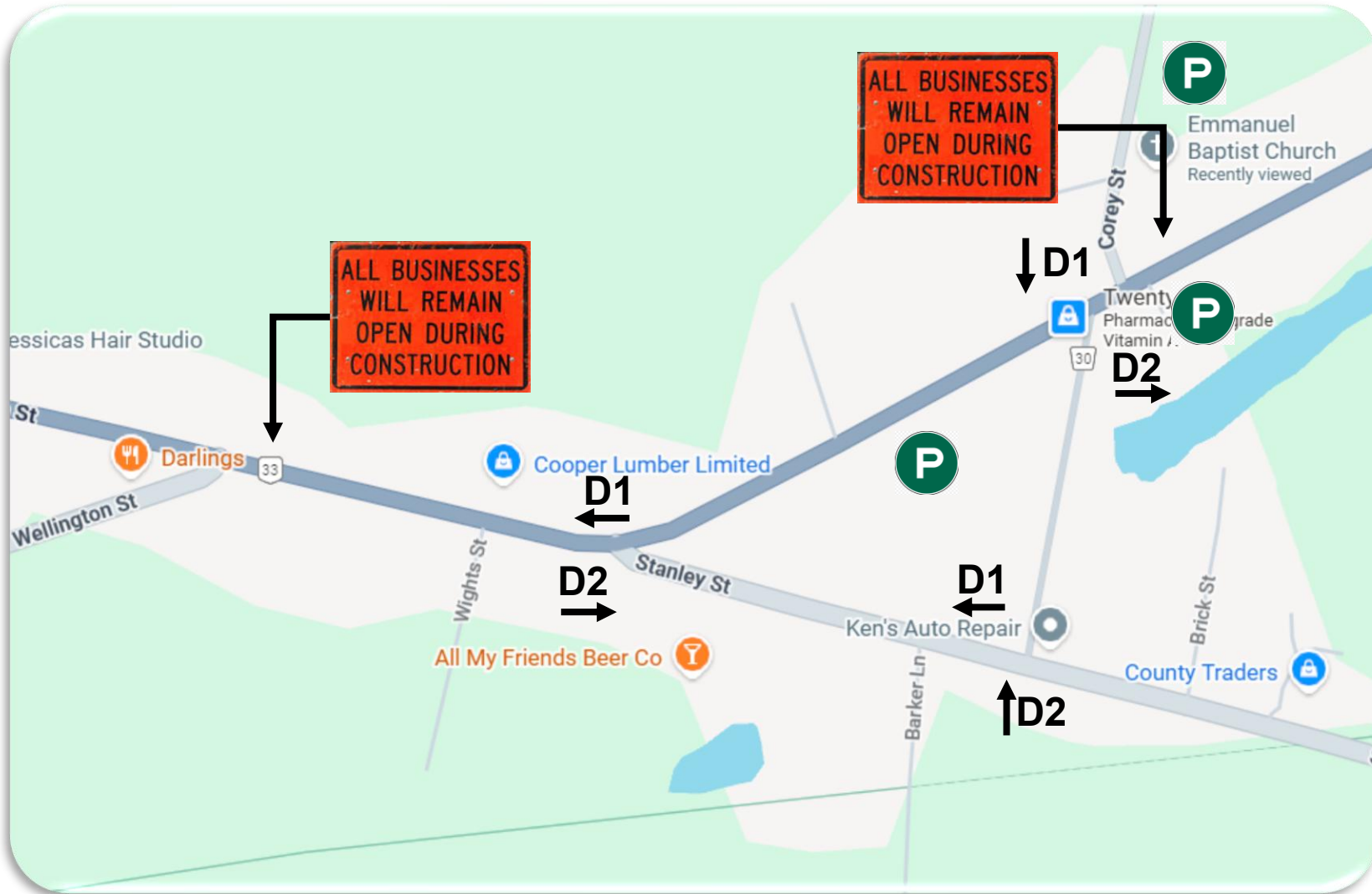


Advanced electronic detour signage for Picton to Wellington direct (Bloomfield by-pass)



Signage added to detour signage to remind traffic that all businesses remain open during construction

# LOCAL DETOUR PLAN & PARKING



Local detour route – Stanley St to Mill St



Public parking remain available at the public parking lot at 289 Main St (Town Hall) & the public lot adjacent to Corey St intersection



Public parking will also be made available at the Emmanuel Baptist Church (details to follow)

# EXPECTED IMPACTS TO RESIDENTS & BUSINESS



## Hours of Work

- Work will take place Monday to Friday from 7am to 7pm.
- All construction related noise must comply with PEC Noise By-Law 143-2022.

## Driveway Access

- The Contractor will notify and coordinate with business owners of any temporary restrictions to driveway access in advance of any disruptions.



## Vibration and Dust

- Vibrations may be experienced during construction.
- Due to vibration, it is encouraged to monitor objects on shelves for buildings located close to the roadway.
- The Contractor will take the necessary steps to reduce dust caused by the construction, ie: concrete wetting and watering of temporary gravel roadways.

# MUNICIPAL SERVICES



## Emergency Services

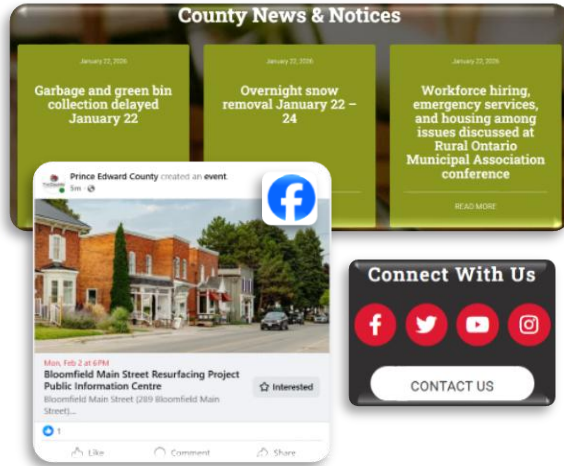
- Emergency access for Paramedics, Police and Fire Services, shall be accommodated at all times.

## Garbage and Recycling Collection

- PEC (contracted to Environmental 360 Solutions) will continue to collect garbage, compost and recycling on the usual day of the week.
- Where necessary, the contractor will bring waste bins to a designated location for collection and return the empty bins to the appropriate address each week.
- It is advised to label your bins with your address to ensure proper return.



# COMMUNICATIONS



- The County will frequently issue Public Service Announcements (PSAs) to provide project updates
- PSAs are posted on the County website and social media channels
- Please sign up to receive PSA notices and news directly from the County to your email, by visiting <https://www.thecounty.ca/newsletter-signup/>



- The consulting firm (Jewell) assisting the County with this project will have a full-time Site Inspector present on site for the duration of construction. The County Project Manager shall also be on site part-time.
- Notices with contact details for all project team members involved with the project will be hand delivered to each resident within the construction zone.
- Businesses/ residents with questions may:
  - ➔ 1. speak directly with the PEC/Jewell On-Site Inspector
  - ➔ 2. contact a project team member from the hand delivered notice
  - ➔ 3. contact the municipality general phone/email

# FEEDBACK & COMMENTS

- The County is hosting a Public Information Centre (PIC) on **Feb. 2, 2026, from 6-8pm** at the Bloomfield Town Hall (similar material to be presented).
- A second PIC will be held in Bloomfield in the spring of 2026 once the contract for construction services has been awarded and more project specific details are known.
- You may contact either of the project team members listed below at any time should you have any additional questions or would like to provide feedback.
- **Please provide your feedback to help us deliver this project in the least disruptive way possible:**
  - ➔ **1. Complete a comment sheet (leave it with us or email it to us)**
  - ➔ **2. Email your comments directly to either of the staff members listed below**



**County of Prince Edward**  
Garrett Osborne, C.E.T., PMP  
Project Manager, Development Services  
613-476-2148 x 2002  
gosborne@pecounty.on.ca



**Jewell Engineering Inc.**  
Pat Schick, A.Sc.T  
Project Manager, Jewell  
613-969-1111  
pat@jewelleng.ca