



**The County**  
PRINCE EDWARD COUNTY • ONTARIO

# Rossmore

# Stormwater Master Servicing Plan

## Public Information Centre #1

March 04-2026, 5:00 p.m. to 8:00 p.m.



Platinum  
member



**J.L. Richards**  
ENGINEERS • ARCHITECTS • PLANNERS

# Land Acknowledgement

We acknowledge that the land on which we gather is within the traditional territory of the Mohawks of the Bay of Quinte, part of the Haudenosaunee Confederacy. We recognize their presence and stewardship of this land, and we express our gratitude and respect for their contributions in the past, present, and future.

As part of our commitment to respectful engagement, we have initiated consultations with First Nations communities in the area surrounding Rossmore, Ontario, including:

- Alderville First Nation
- Curve Lake First Nation
- Hiawatha First Nation
- Kawartha Nishnawbe
- Mississaugas of Scugog Island First Nation
- Mohawks of the Bay of Quinte

This consultation process will ensure that their perspectives, right, and interests are meaningfully considered throughout the planning and implementation of this project.



# Project Overview

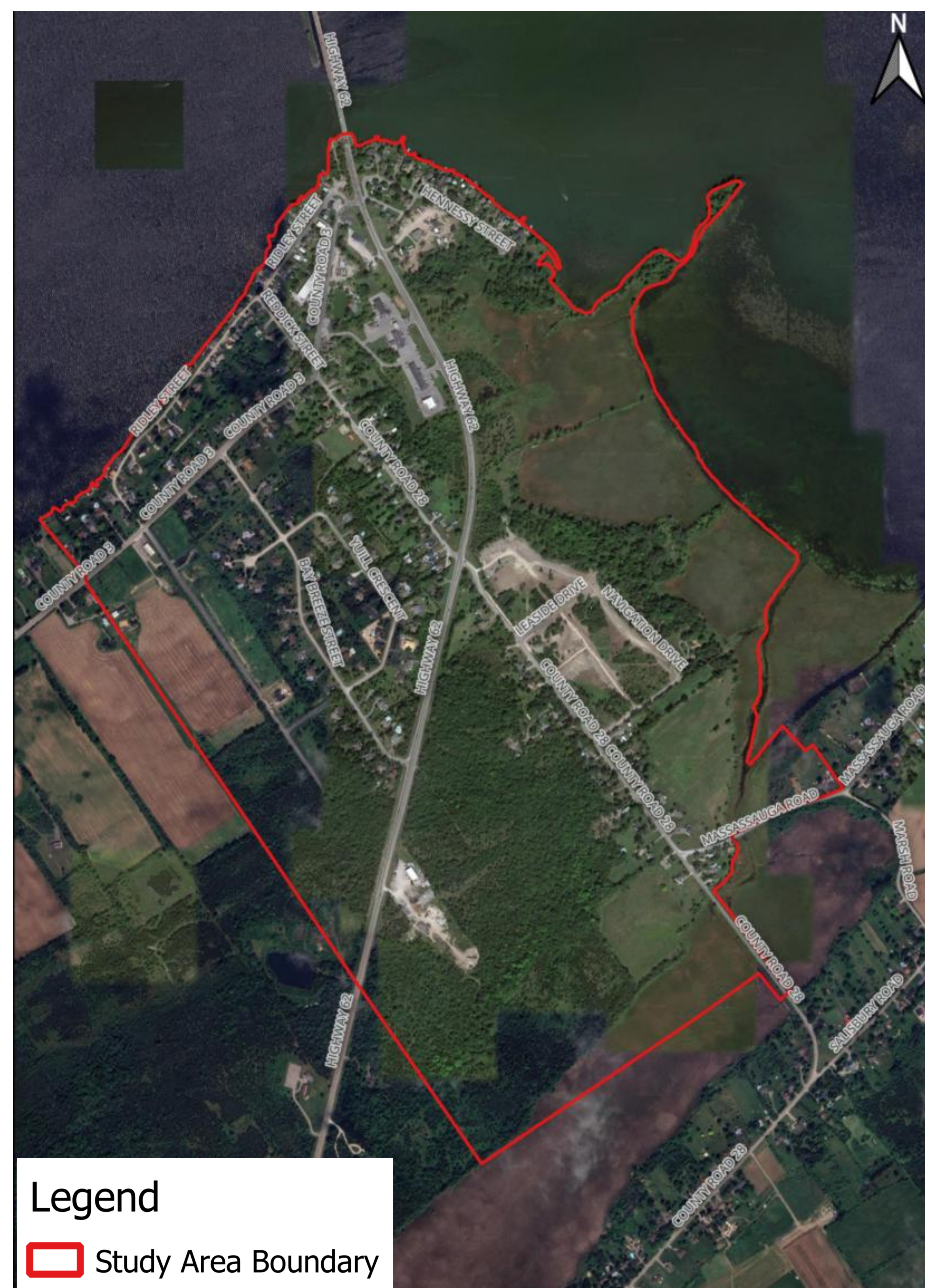
The County of Prince Edward has initiated a Stormwater Master Servicing Plan under the Municipal Class Environmental Assessment process for the Rossmore Urban Centre.

The purpose of this study is to identify improvements to the stormwater system in Rossmore that will:

- provide adequate discharge control and drainage into the Bay of Quinte,
- accommodate planned growth in Rossmore to the year 2048,
- align with provincial and municipal planning policies.

Public and agency consultation is a key part of the study process, as it is used to help identify and assess stormwater management solutions.

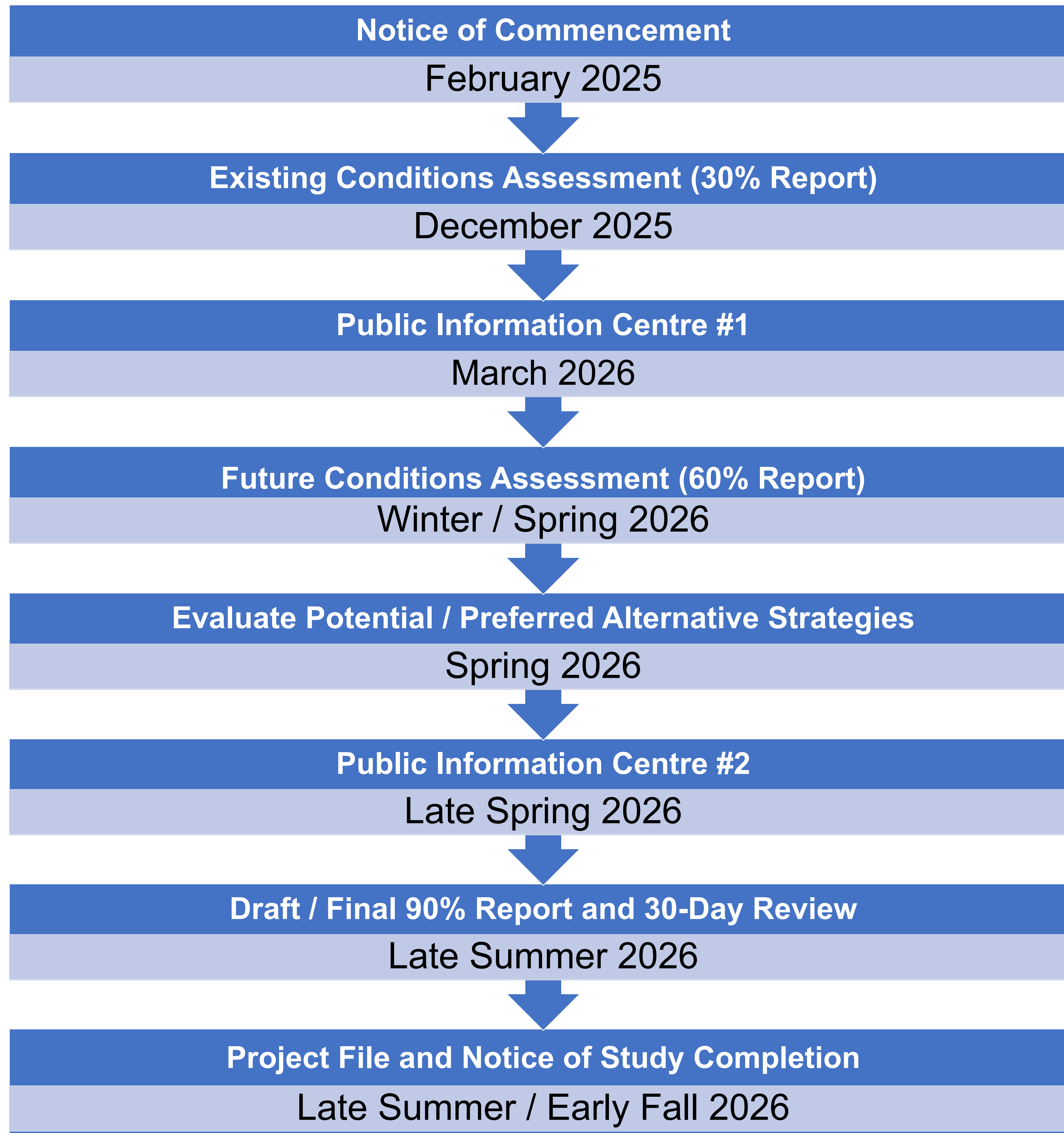
But before these solutions can be identified, the study must first understand existing conditions in Rossmore. This is the focus of today's Public Information Centre.



## Legend

 Study Area Boundary

# Master Plan Process and Timeline



# Existing Stormwater System

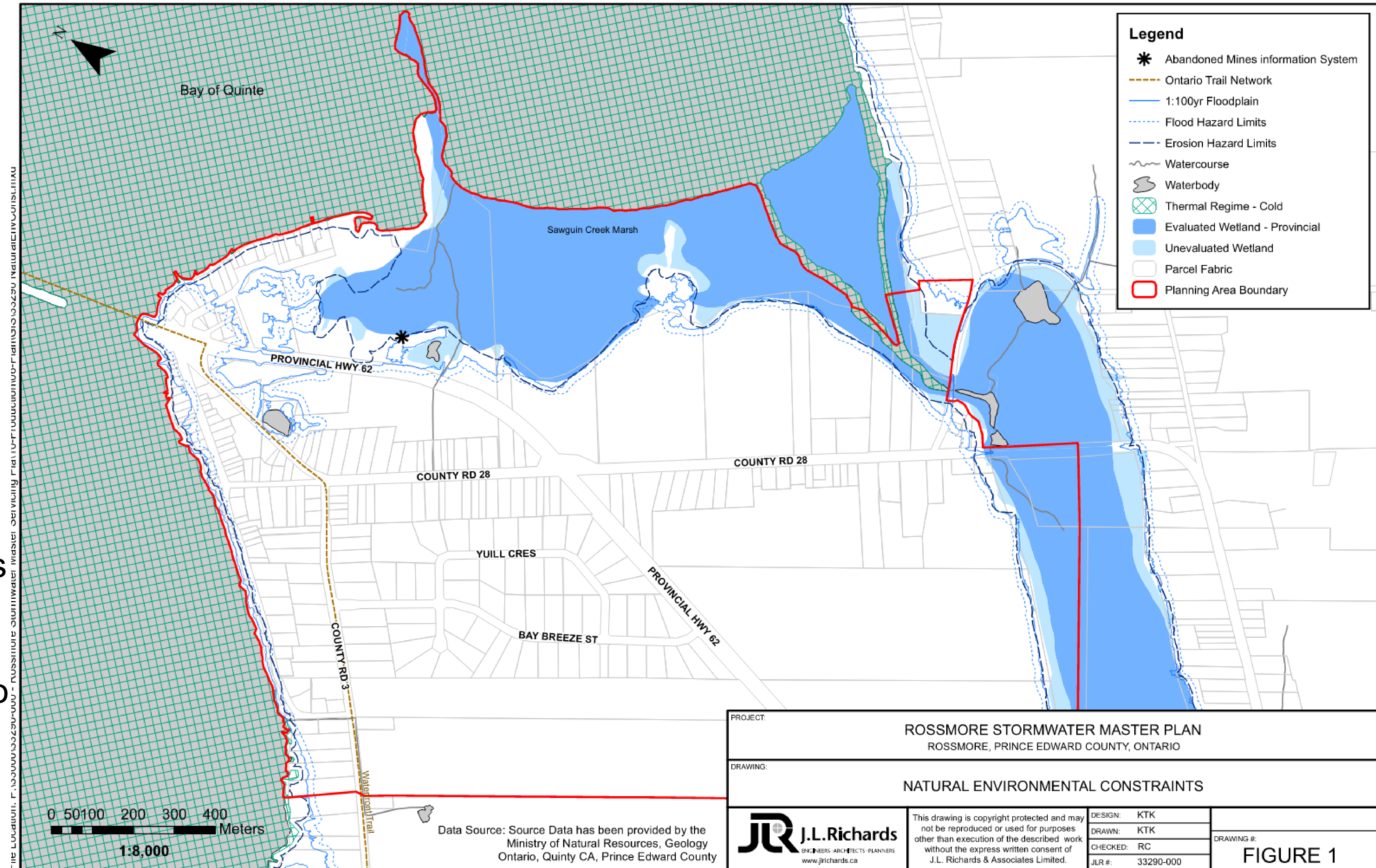
The existing stormwater system in Rossmore includes:

- a minor storm system along County Road 3,
- a series of ditching, culverts and stormwater detention ponds,
- four stormwater outlets along Ridley Street which provides discharge control and drainage from the community into the Bay of Quinte.



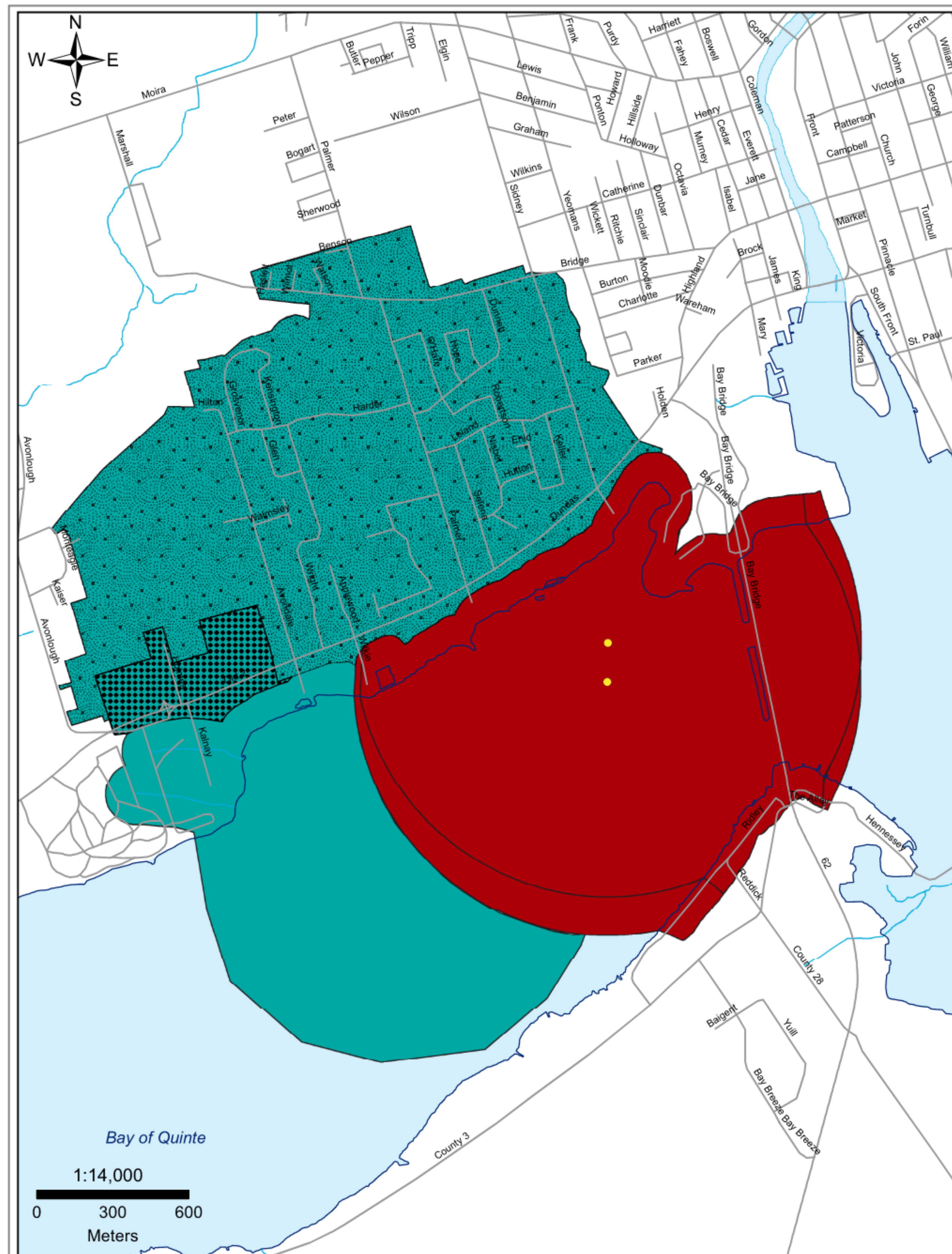
# Existing Environmental Conditions

- The Sawguin Creek Marsh Wetland outlets to the Bay of Quinte; it prevents flood damage, stores and releases groundwater, improves water quality, and provides wildlife habitat.
- The Bay of Quinte is a Special Concern Area for one or more aquatic species under the Species at Risk Act; the Bay of Quinte Remedial Action Plan highlights the need to reduce contaminants entering the Bay of Quinte.



- Rossmore is impacted by the 1:100-year floodplain, and erosion hazards.
- There is an Abandoned Mine Site in Rossmore.
- Soils in Rossmore generally consist of marshland and clay loam.

# Existing Environmental Conditions

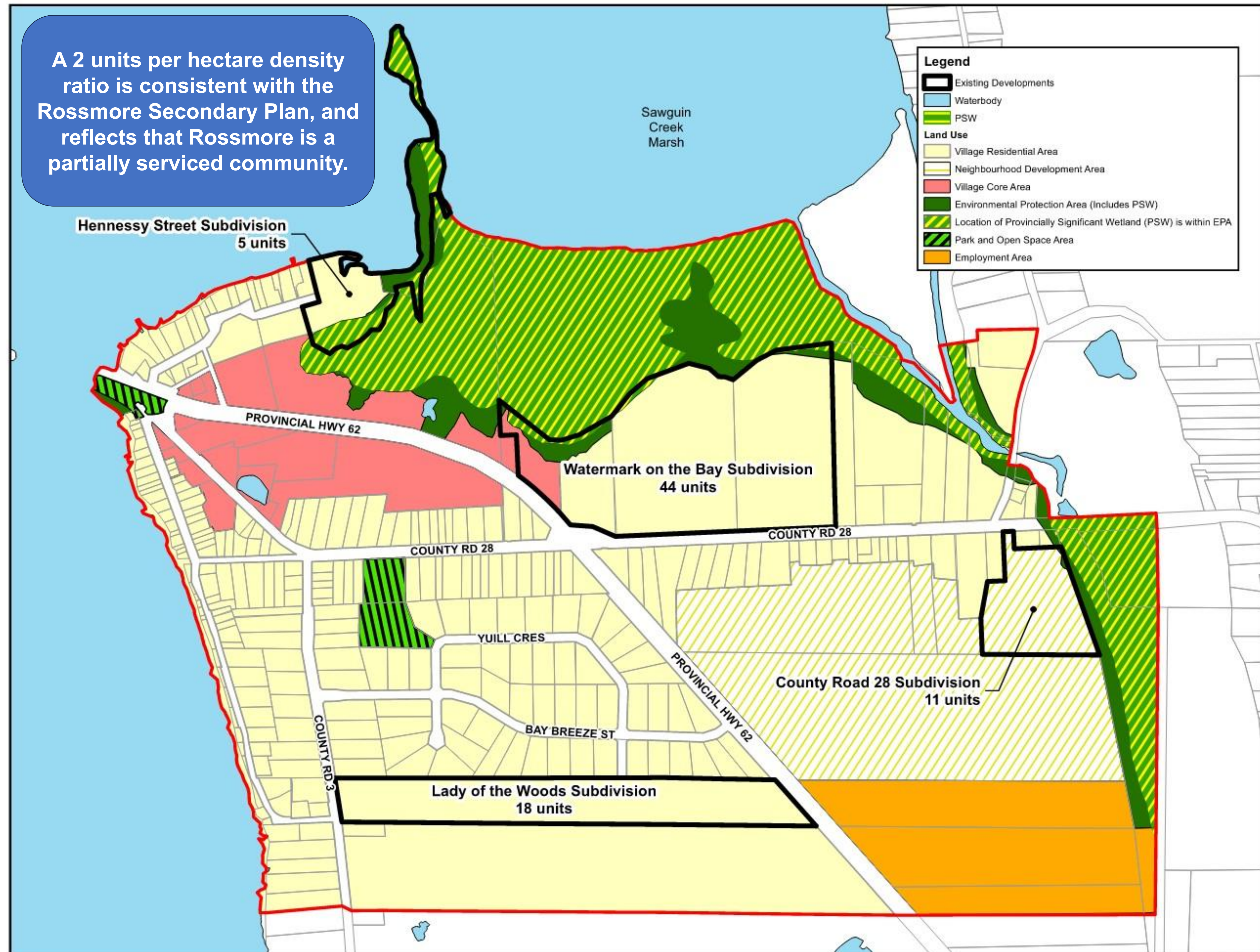


- Intake Protection Zones (IPZ) are the areas around a water intake considered to be vulnerable to contamination.
- IPZ areas are classified by the distance from a water intake of how quickly water (and pollutants) can reach the intake, and are numbered 1, 2, or 3. The IPZ-1 represents the area closest to a water intake (a 1 km radius).
- As shown, the north shore of Rossmore (along Ridley Street and Hennessy Street) is located within IPZ-1 which indicates the 1 km radius around the water intake for the Belleville (Gerry O'Connor) Water Treatment Plant.
- New stormwater management outlets within the IPZ that present a potential source water threat must meet prescribed treatment criteria in upstream facilities as per the Quinte Region Source Protection Plan.
- Any new outlets to the Bay of Quinte must be approved by the Quinte Conservation Authority.



# Existing Land Uses and Development

- Rossmore is a small, mainly residential 'urban centre' (2021: 1,074 people | 2.5 people per household).
- Rossmore has municipal water (c/o Belleville) but no municipal sewer.
- There are **four** ongoing subdivisions (or 78 new dwelling units).
- The lack of full municipal services has historically led to a lower density form of development and limited the growth of higher density developments.

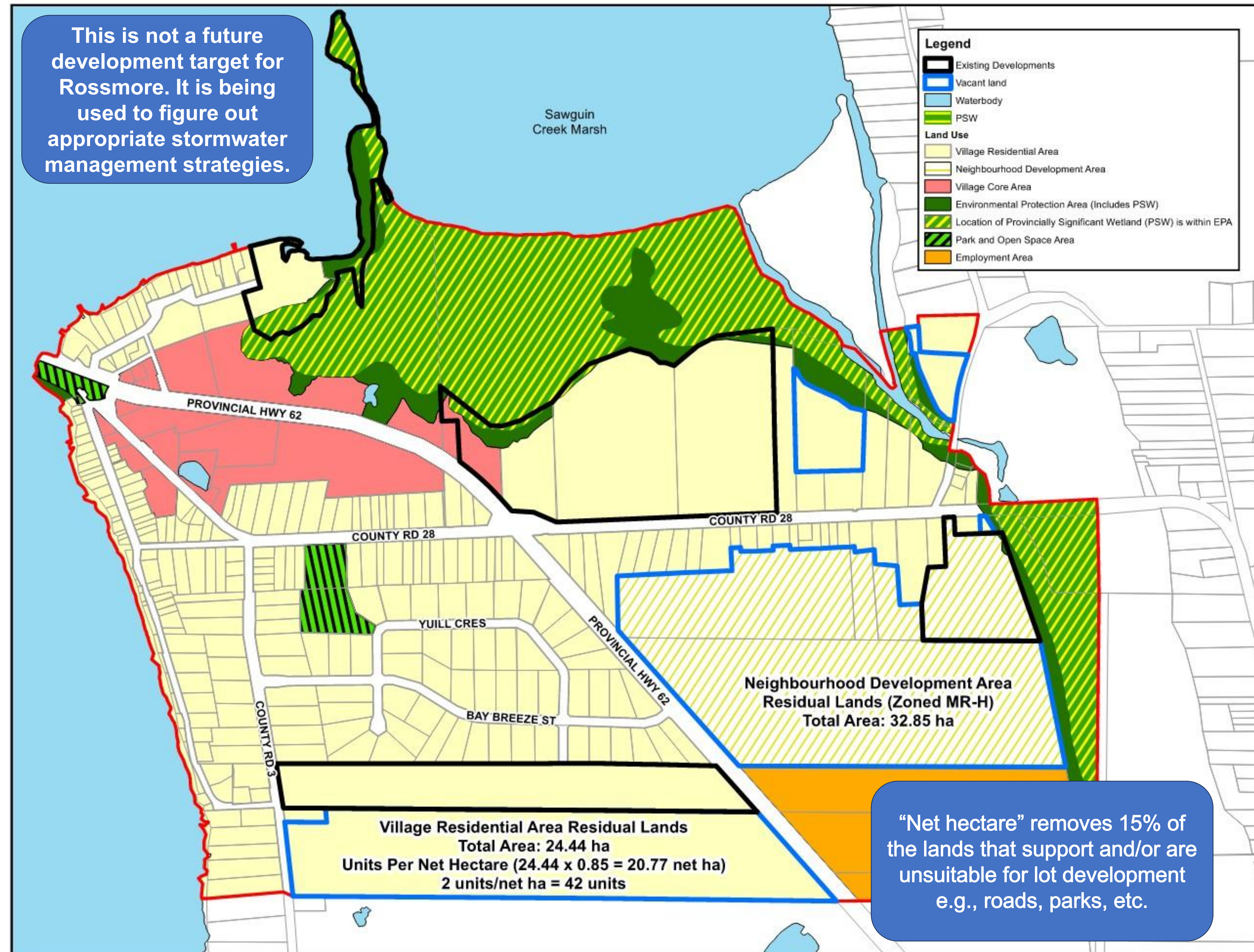


# Projected Growth Context

- Urban growth studies show nominal population growth (from 1,074 to 1,400 people) and near-zero employment growth in Rossmore.
- The 32.85 hectares of vacant 'Neighbourhood Development Area' land is zoned Industrial and is not included here.
- Projected Housing Growth:**

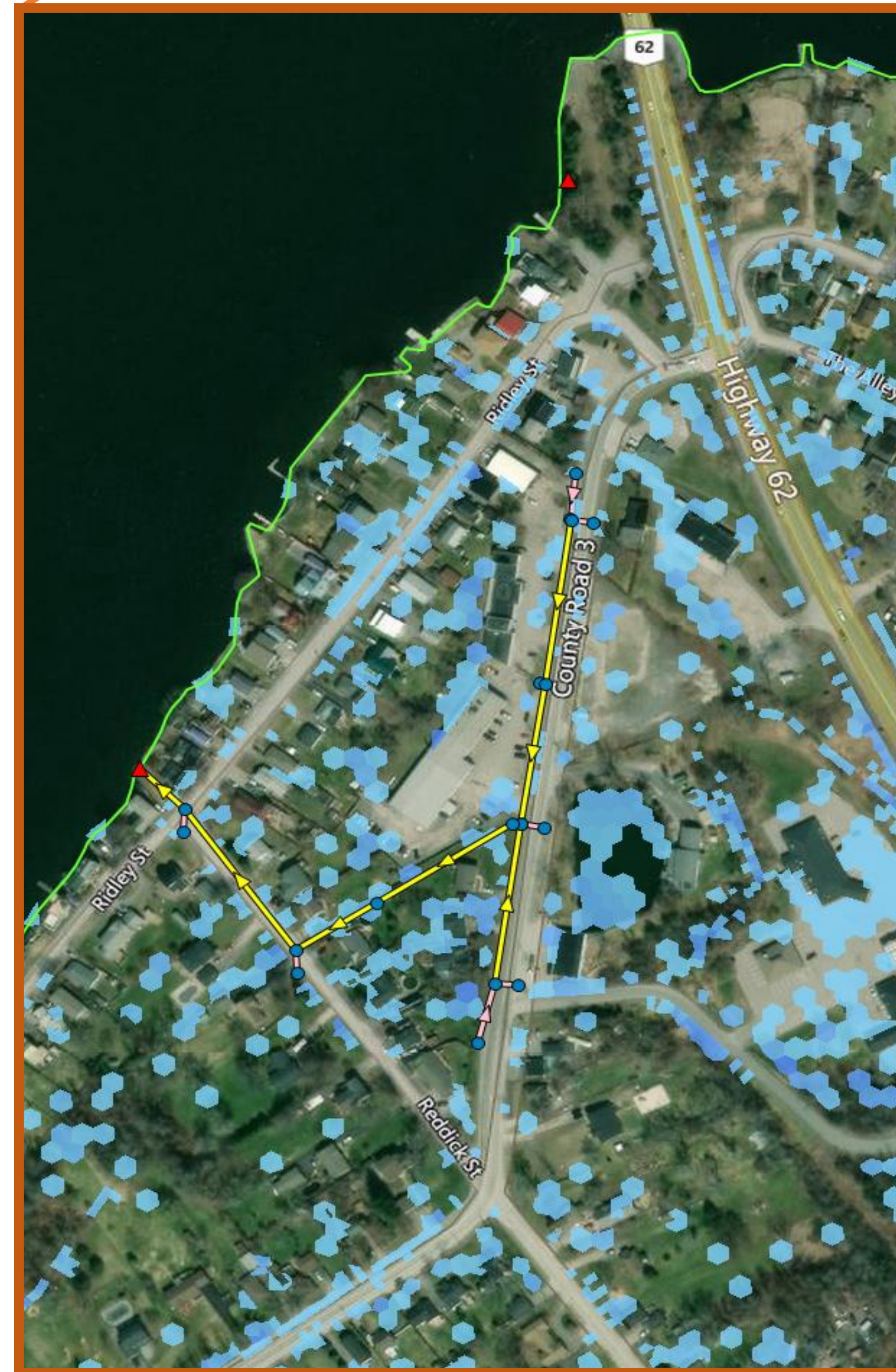
New:	78 units
Potential: +	42 units
<b>Total:</b>	<b>120 units</b>
- Household Size:** 2.5 people
- Projected Population:**

Current:	1,100 people
New: +	195 people
Potential: +	105 people
<b>Total:</b>	<b>1,400 people</b>



# Existing Stormwater Conditions (1:5-Year Events)

- A 1:5-year storm event (low intensity) means there is a **20% chance of it occurring in any given year.**
- Rainfall is collected by catchbasins and conveyed through storm sewers and roadside ditches.
- The modeling results generally show that the storm sewers and roadside ditches have sufficient capacity to convey the 1:5-year storm events.



1:5 Year Rainfall Event



## Legend

- Junctions
- Outfalls
- Conduits
- Site Boundary
- 2D cells - Max. Depth (m)

2D cells – Maximum Depth (m)



0 m

1.3 m

# Existing Stormwater Conditions (1:100-Year Events)

- A 1:100-year storm event (high intensity) means there is a **1% chance of it occurring in any given year.**
- Rainfall is mainly conveyed by overland flow, including along roadside ditches.
- The modeling results generally show that some roadside ditches and channels experience flow depths greater than 0.5 m (the dark blue areas on the map), and on-road flooding at certain locations.



# Problem / Opportunity Statement

**The purpose of the following Problem / Opportunity Statement is to set the theme and scope for this study, based on the work done to date:**

The County of Prince Edward is responsible for all capital works associated with stormwater infrastructure in the Rossmore Urban Centre. As a community that is partially served (with municipal water service), it has been identified that the lands available for future residential development is limited, and that the lack of municipal sewer services would preclude the growth of higher density developments at this time.

The Rossmore Urban Centre and surrounding area requires a comprehensive stormwater servicing and capital costing strategy to guide current and future infrastructure planning to 2048. This strategy will need to support economic prosperity, community well-being, fiscal responsibility, and environmental sustainability.

# NEXT STEPS



Image source: Microsoft Office

Review your feedback from today's Public Information Centre.

Identify best practices for stormwater management in Rossmore and prepare future modeling scenarios.

Identify and shortlist a series of potential stormwater management strategies.

Develop conceptual designs for 2 alternative stormwater management strategies.

Schedule another Public Information Centre to review our study findings and potential / preferred strategies **(Spring)**.

Refine / Finalize the recommended stormwater management strategy complete with a preliminary opinion of probable costs.

Prepare a Draft 90% Project File Report **(Summer)**.

Post the Final 90% Project File Report for a 30-day review period **(late Summer)**.

Project File and issue a Notice of Completion to stakeholders as per the EA Act **(late Summer / early Fall)**.

# Thank you!



**The County**  
PRINCE EDWARD COUNTY • ONTARIO



Please send your comments to the project contacts at the County of Prince Edward and J.L. Richards listed below.

Visit the Municipality website for more study updates:

<https://www.thecounty.ca/government/municipal-projects/special-capital-projects/rossmore-stormwater-master-servicing-plan>

---

**Wes Paetkau, RPP, MCIP**  
J.L. Richards & Associates Ltd.

Senior Planner; Practice Lead

343-302-5417  
wpaetkau@jlrichards.ca

**Christopher Timpson, P.Eng.**  
The County of Prince Edward

Project Manager

614-476-2148 ext. 2035  
ctimpson@pecounty.on.ca