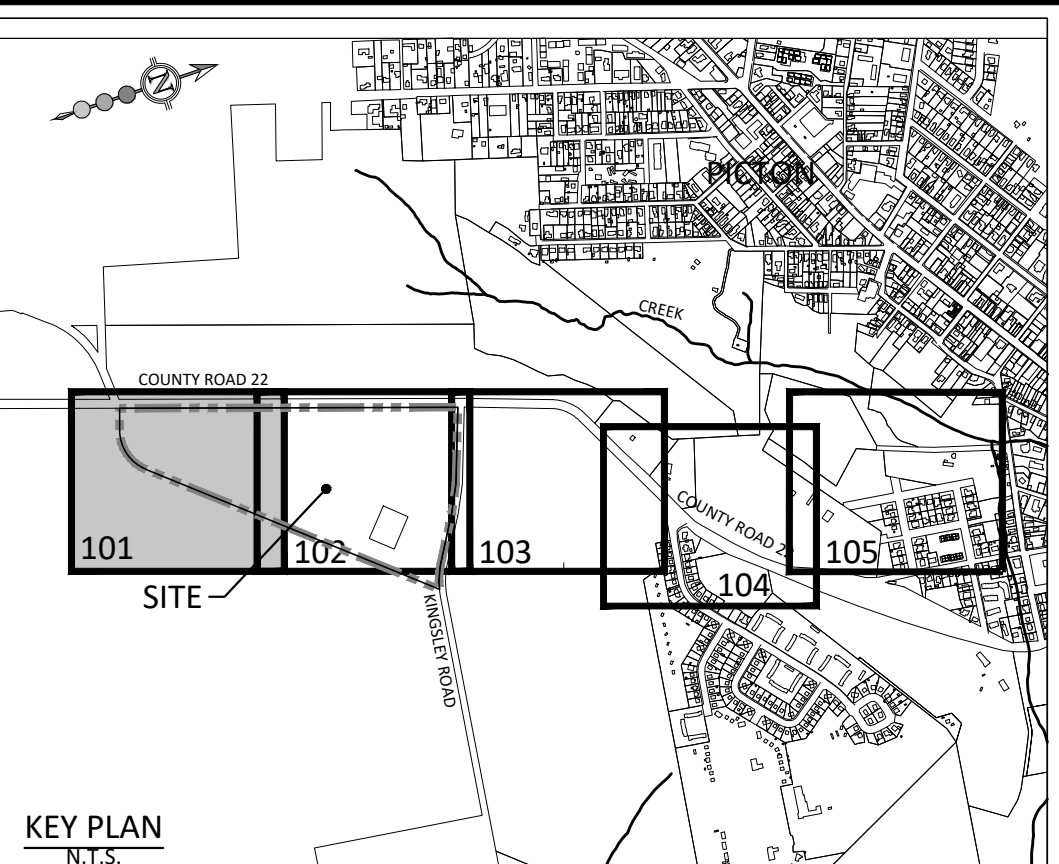
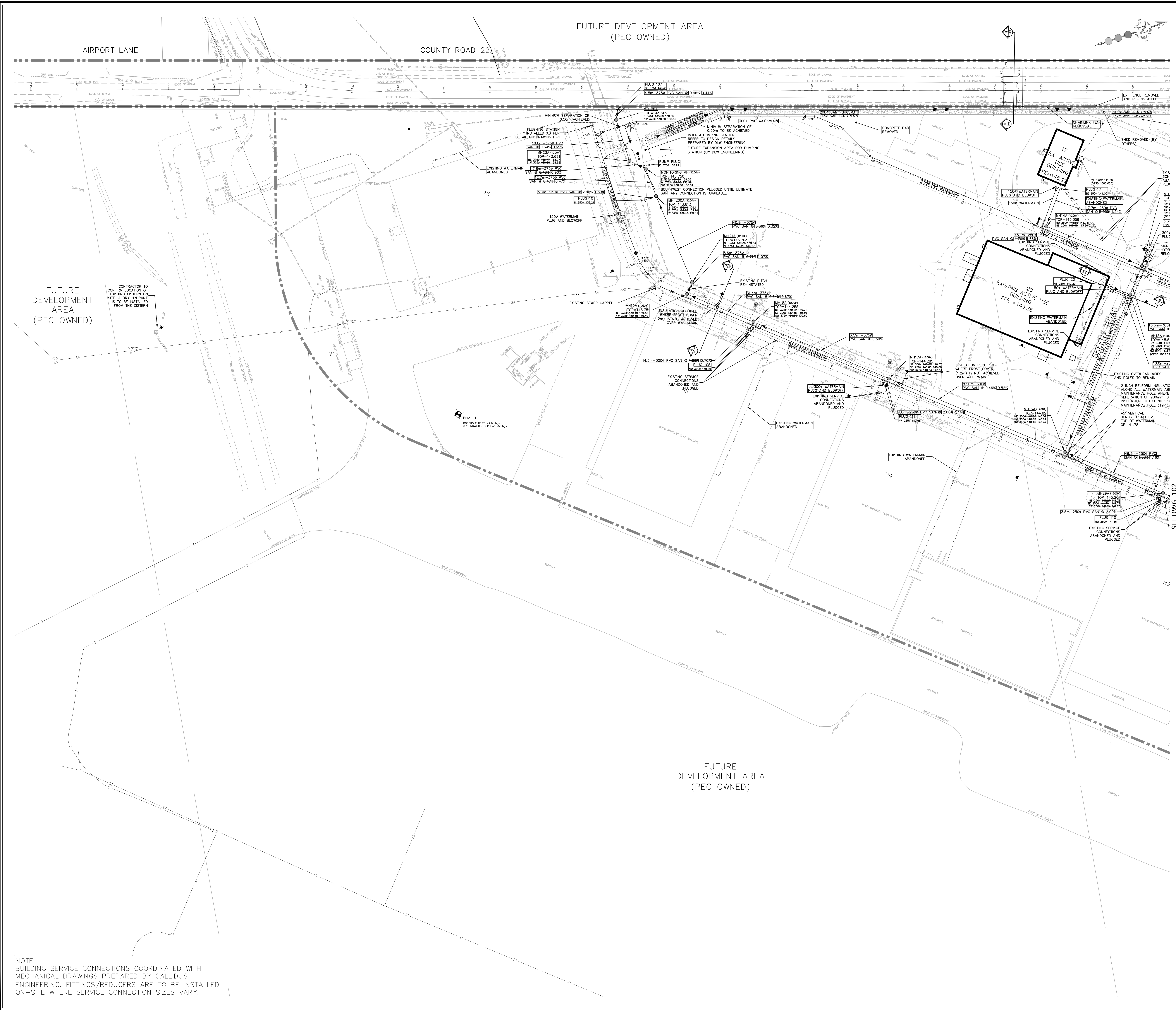

Appendix B.5 Revitalization District Drawings





BENCHMARK: ELEV. 141.477m
 ELEVATIONS SHOWN HEREON ARE GEODETIC AND ARE REFERRED TO MNRF BENCHMARK NO. 00080828 HAVING A PUBLISHED ELEVATION TO 451.477 METRES.

- LEGEND:**
- PROPERTY LINE
 - SANITARY SEWER WITH MANHOLE
 - SANITARY FORCEMAIN
 - WATERMAIN
 - METER CHAMBER
 - BACKFLOW PREVENTOR (CSA B64.10 AND B64.10.01)
 - WATER VALVE
 - FIRE HYDRANT
 - WATER SAMPLING STATION
 - WATER SAMPLING STATION
 - REDUCER
 - CROSS SECTION
 - BOREHOLE
 - PROPOSED SIGNAGE
 - FILTER DAM WITH SOCK
 - TRENCH PLUG PER OPSD 802.095
 - SANITARY SEWER CLEANOUT
 - EXISTING WATERMAIN
 - EXISTING GAS
 - EXISTING CHAINLINK FENCE
 - EXISTING OVERHEAD WIRES
 - EXISTING STORM
 - EXISTING SANITARY
 - SUE ELECTRICAL PRIVATE QLB
 - SUE HYDRO QLB
 - EXISTING BELL
 - EXISTING UNKNOWN CONDUCTIVE
 - EXISTING STREETLIGHT
 - EXISTING SANITARY MAINTENANCE HOLE
 - EXISTING STORM MAINTENANCE HOLE
 - EXISTING CATCHBASIN
 - EXISTING WATER VALVE
 - EXISTING SIGN
 - EXISTING SIGN
 - EXISTING HYDRO POLE
 - EXISTING MAINTENANCE HOLE
 - EXISTING MONITORING WELL
 - EXISTING TREE
 - ROAD RESTORATION
 - BOULEVARD RESTORATION
 - DRIVEWAY RESTORATION
 - IMPACTED ENVIRONMENTAL PLUME (PALMER)
 - BELFRUM INSULATION (OR APPROVED EQUIVALENT)
 - WATERMAIN TRENCH CONFIRMED BY 45IGHT GPR INVESTIGATION FEBRUARY 2024

RECORD DRAWING

NOTES:
 1. REFER TO DWG 501-504 FOR REMOVAL PLANS
 2. ALL DISTURBED LINE PAINTING TO BE RE-INSTATED TO EXISTING CONDITIONS
 TOPOGRAPHIC SURVEY PROVIDED BY SCHAEFER DEALON BENNET LTD., OCTOBER 2022
 UTILITY INVESTIGATION PROVIDED BY 45IGHT UTILITY ENGINEERS DATED JANUARY 18 2023

REVISIONS			
No.	DESCRIPTION	DATE	BY / APPROVED
1.	ISSUED FOR 3RD ENGINEERING SUBMISSION	OCT 30/23	ERS
2.	ISSUED FOR 4TH ENGINEERING SUBMISSION	DEC 18/23	ERS
3.	ISSUED FOR CONSTRUCTION	FEB 13/24	ERS
4.	RE-ISSUED FOR CONSTRUCTION	FEB 27/24	ERS
5.	RE-ISSUED FOR CONSTRUCTION	MAR 25/24	ERS
6.	REVISED SKEENA ROAD ALIGNMENT	APR 23/24	ERS
7.	REVISED ALIGNMENT AT BOOSTER PUMPING STATION	AUG 28/24	ERS
8.	REVISIONS TO SUPPORT BUILDING PERMIT APPLICATIONS	JAN 20/25	ERS
9.	RECORD DRAWING SUBMISSION	MAR 20/25	M.P.

SGS consulting group ltd
 30 CENTURIAN DRIVE, SUITE 500
 MARKHAM, ONTARIO L3R 8B8
 TEL: (905) 475-1300
 FAX: (905) 475-8335

PEC COMMUNITY PARTNERS INC.
BASE31 REVITALIZATION DISTRICT - PHASE 1
SERVICING PLAN 1

DATE: MARCH 2025	DESIGNED BY: E.S.	CHECKED BY: P.G.
SCALE: 1:500	DRAWN BY: E.S.	CHECKED BY: S.M.S.

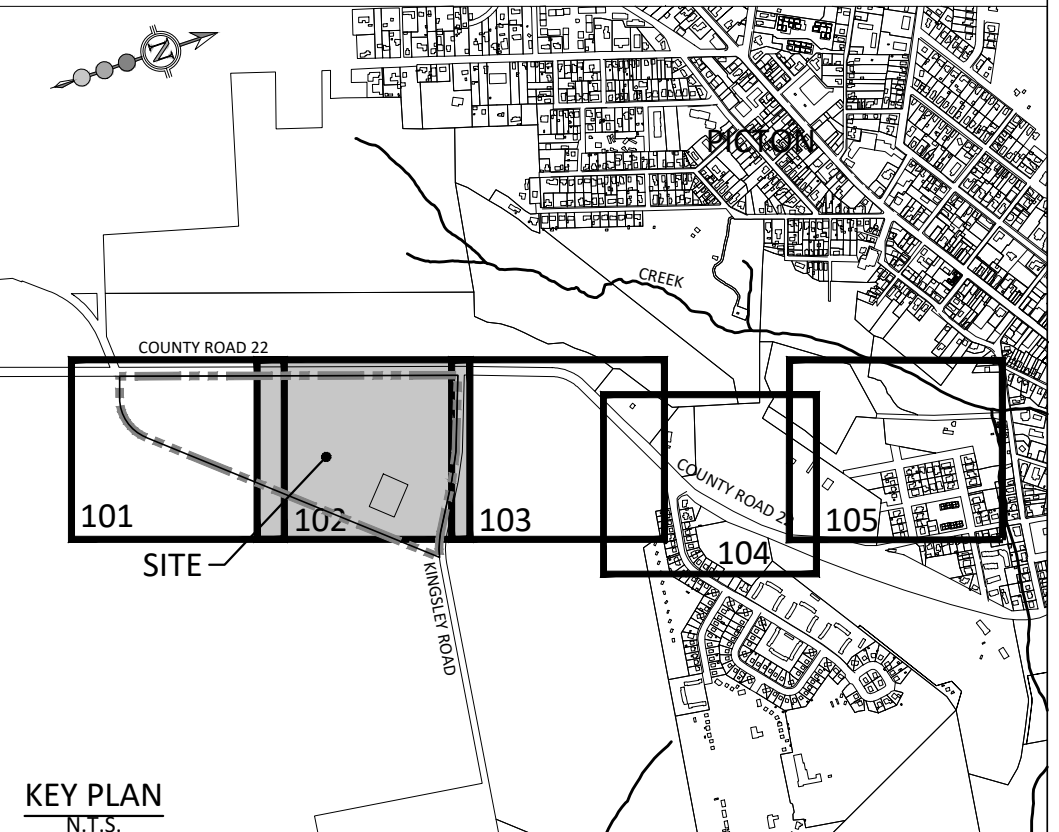
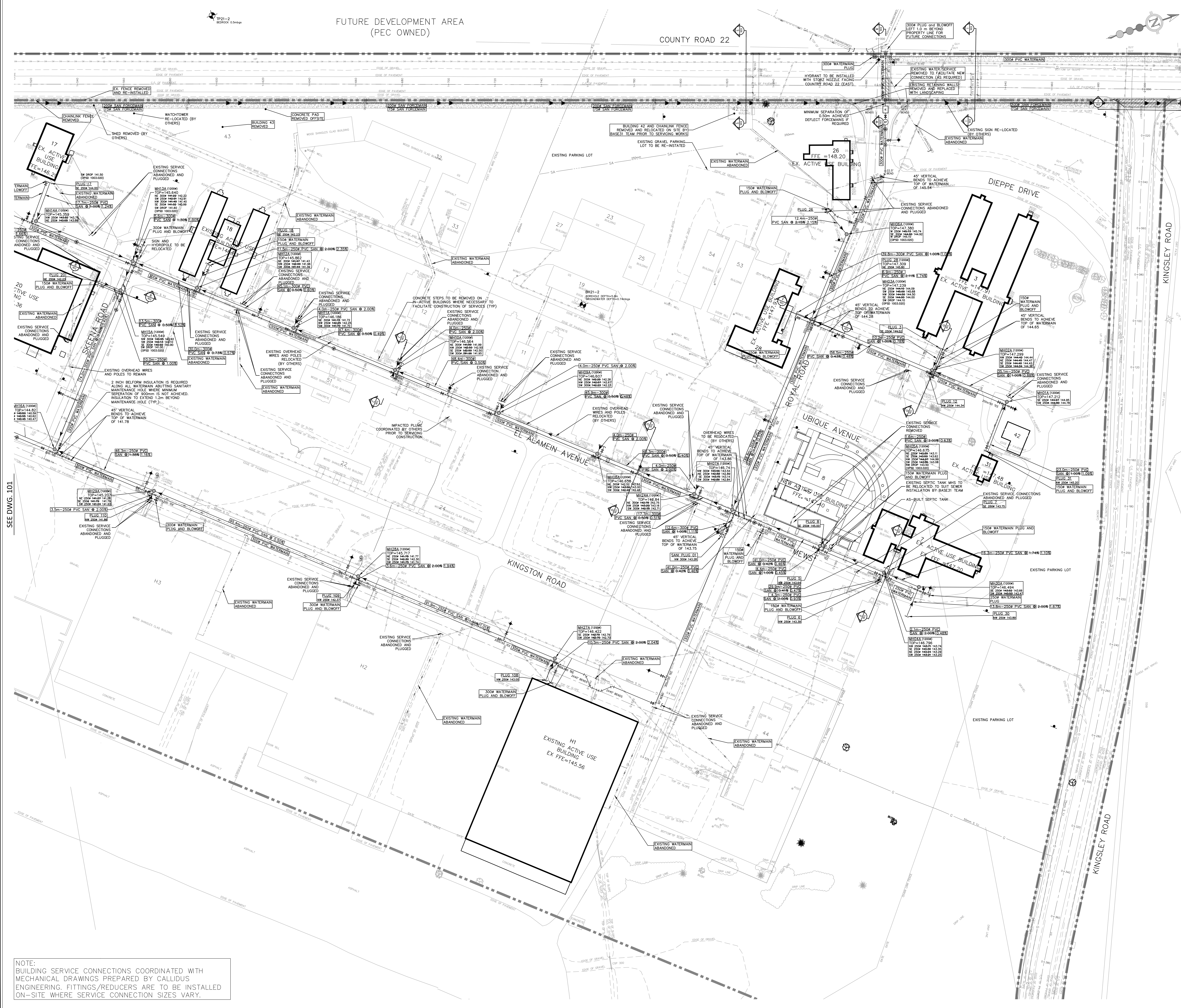
APPROVED AS TO FORM IN RELIANCE UPON THE PROFESSIONAL SKILL AND ABILITY OF SGS CONSULTING GROUP LTD. CONSULTING ENGINEERS AS TO DESIGN AND SPECIFICATION.
 APPROVED VIA EMAIL: 23 DECEMBER 2023
 Peter Meyer, P.Eng. Date
 Director of Development Services

PROJECT NO: **2365**
 DRAWING NO: **101**

NOTE:
 BUILDING SERVICE CONNECTIONS COORDINATED WITH MECHANICAL DRAWINGS PREPARED BY CALLIDUS ENGINEERING. FITTINGS/REDUCERS ARE TO BE INSTALLED ON-SITE WHERE SERVICE CONNECTION SIZES VARY.

FUTURE DEVELOPMENT AREA
(PEC OWNED)

COUNTY ROAD 22



KEY PLAN
BENCHMARK: ELEV. 141.477m
ELEVATIONS SHOWN HEREON ARE GEODETIC AND ARE REFERRED TO MNH BENCHMARK NO. 03058005 HAVING A PUBLISHED ELEVATION TO 451.47 METRES.

- LEGEND:**
- PROPERTY LINE
 - SANITARY SEWER WITH MANHOLE
 - SANITARY FOREMAIN
 - WATERMAIN
 - METER CHAMBER
 - BACKFLOW PREVENTOR (CSA B64-10 AND B64-10.01)
 - WATER VALVE
 - FIRE HYDRANT
 - WATER SAMPLING STATION
 - WATER SAMPLING STATION
 - REDUCER
 - CROSS SECTION
 - BOREHOLE
 - PROPOSED SIGNAGE
 - FILTER DAM WITH SOCK
 - TRENCH PLUG PER OPSD 802.095
 - SANITARY SEWER CLEANOUT
 - EXISTING WATERMAIN
 - EXISTING GAS
 - EXISTING CHAINLINK FENCE
 - EXISTING STORM
 - EXISTING SANITARY
 - SUE ELECTRICAL PRIVATE QLB
 - SUE HYDRO QLB
 - EXISTING BELL
 - EXISTING UNKNOWN CONDUCTIVE
 - EXISTING STREETLIGHT
 - EXISTING SANITARY MAINTENANCE HOLE
 - EXISTING STORM MAINTENANCE HOLE
 - EXISTING CATCHBASIN
 - EXISTING WATER VALVE
 - EXISTING HYDRANT
 - EXISTING HYDRO POLE
 - EXISTING MAINTENANCE HOLE
 - EXISTING MONITORING WELL
 - EXISTING TREE
 - ROAD RESTORATION
 - BOULEVARD RESTORATION
 - DRIVEWAY RESTORATION
 - IMPACTED ENVIRONMENTAL PLUME (PALMER)
 - BELFORM INSULATION (OR APPROVED EQUIVALENT)
 - WATERMAIN TRENCH CONFIRMED BY 45IGHT GPR INVESTIGATION FEBRUARY 2024

SEE DWG. 101

SEE DWG. 103

NOTE:
BUILDING SERVICE CONNECTIONS COORDINATED WITH MECHANICAL DRAWINGS PREPARED BY CALLIDUS ENGINEERING. FITTINGS/REDUCERS ARE TO BE INSTALLED ON-SITE WHERE SERVICE CONNECTION SIZES VARY.

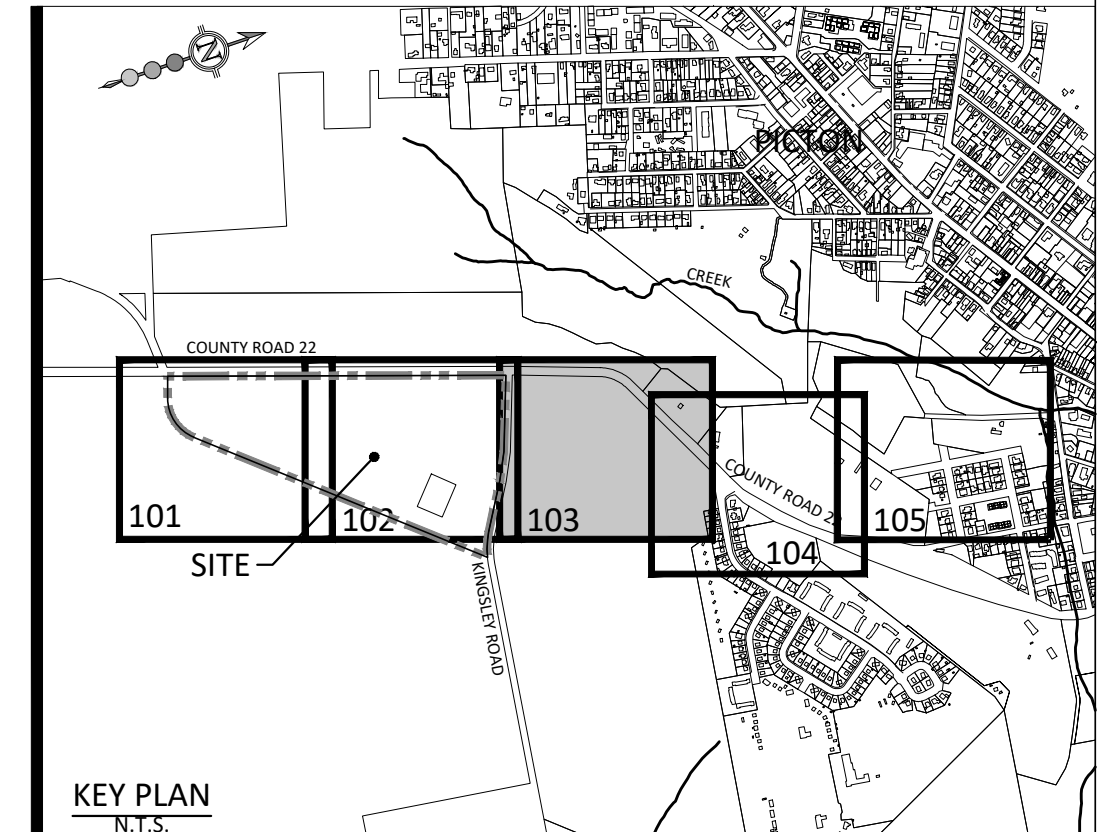
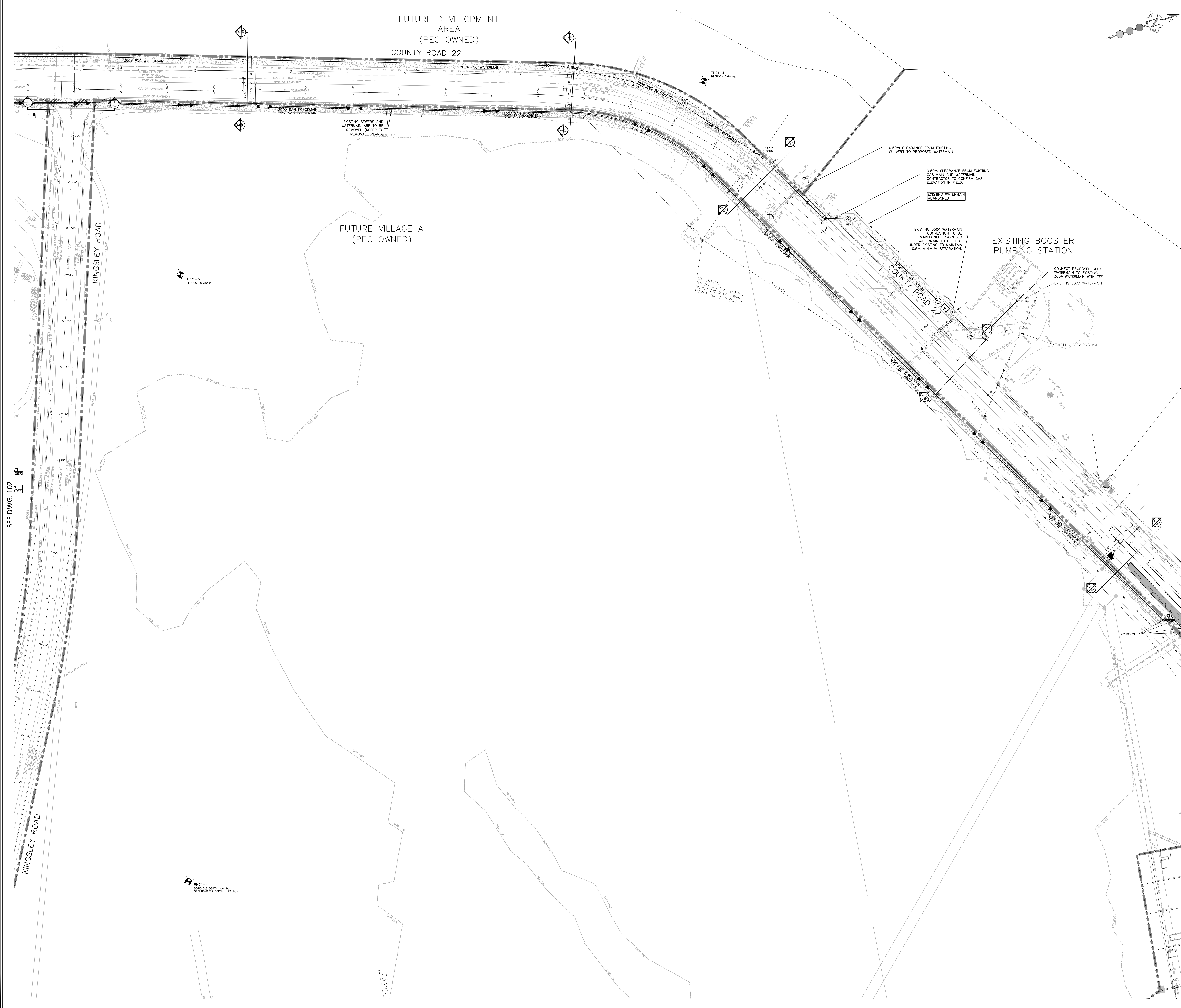
RECORD DRAWING

NOTES:
1. REFER TO DWG 504 FOR REMOVAL PLANS
2. ALL DISTURBED LINE PAINTING TO BE RE-INSTATED TO EXISTING CONDITIONS
3. TOPOGRAPHIC SURVEY PROVIDED BY SCHAFFER DEALON BENNET LTD., OCTOBER 2022
4. UTILITY INVESTIGATION PROVIDED BY EIGHT UTILITY ENGINEERS DATED JANUARY 18 2023

REVISIONS				
NO.	DESCRIPTION	DATE	BY	APPROVED
1.	ISSUED FOR 3RD ENGINEERING SUBMISSION	OCT 30/23	ERS	
2.	ISSUED FOR 4TH ENGINEERING SUBMISSION	DEC 18/23	ERS	
3.	ISSUED FOR CONSTRUCTION	FEB 13/24	ERS	
4.	RE-ISSUED FOR CONSTRUCTION	FEB 27/24	ERS	
5.	RE-ISSUED FOR CONSTRUCTION	MAR 25/24	ERS	
6.	REVISED SKENE ROAD ALIGNMENT	APR 23/24	ERS	
7.	REVISED ALIGNMENT AT BOOSTER PUMPING STATION	AUG 28/24	ERS	
8.	REVISIONS TO SUPPORT BUILDING PERMIT APPLICATIONS	JAN 20/25	ERS	
9.	RECORD DRAWING SUBMISSION	MAR 20/25	M.P.	

SGS consulting group ltd
30 CENTURIAN DRIVE, SUITE 500
MARKHAM, ONTARIO L3R 8B8
TEL: (905) 475-3300
FAX: (905) 475-8335

PEC COMMUNITY PARTNERS INC.			
BASE31 REVITALIZATION DISTRICT - PHASE 1			
SERVICING PLAN 2			
DATE: MARCH 2025	DESIGNED BY: E.S.	CHECKED BY: P.G.	P.G.
SCALE: 1:500	DRAWN BY: E.S.	CHECKED BY: S.M.S.	S.M.S.
APPROVED AS TO FORM IN RELIANCE UPON THE PROFESSIONAL SKILL AND ABILITY OF SGS CONSULTING GROUP LTD. CONSULTING ENGINEERS AS TO DESIGN AND SPECIFICATION.			PROJECT NO: 2365
APPROVED VIA EMAIL: 23 DECEMBER 2023			DRAWING NO: 102
Project Manager, P.Eng. Director of Development Services			



BENCHMARK: ELEV. 141.477m
 ELEVATIONS SHOWN HEREON ARE GEODETIC AND ARE REFERRED TO MNRF BENCHMARK NO. 000808268 HAVING A PUBLISHED ELEVATION TO 41.477 METRES.

- LEGEND:**
- PROPERTY LINE
 - SANITARY SEWER WITH MANHOLE
 - SANITARY FORCEMAIN
 - WATERMAIN
 - METER CHAMBER
 - BACKFLOW PREVENTOR (CSA B64.10 AND B64.10.01)
 - ⊕ WATER VALVE
 - ⊕ FIRE HYDRANT
 - ⊕ WATER SAMPLING STATION
 - ⊕ WATER SAMPLING STATION
 - ⊕ REDUCER
 - CROSS SECTION
 - ⊕ BHZ1-1 BOREHOLE
 - PROPOSED SIGNAGE
 - FILTREC DAM WITH SOCK
 - TRENCH PLUG PER OPSD 802.095
 - SANITARY SEWER CLEANOUT
 - EXISTING WATERMAIN
 - EXISTING GAS
 - EXISTING CHAINLINK FENCE
 - EXISTING OVERHEAD WIRES
 - EXISTING STORM
 - EXISTING SANITARY
 - SUE ELECTRICAL PRIVATE QLB
 - SUE HYDRO QLB
 - EXISTING BELL
 - EXISTING UNKNOWN CONDUCTIVE
 - EXISTING STREETLIGHT
 - EXISTING SANITARY MAINTENANCE HOLE
 - EXISTING STORM MAINTENANCE HOLE
 - EXISTING CATCHBASIN
 - EXISTING WATER VALVE
 - EXISTING HYDRANT
 - EXISTING SIGN
 - EXISTING HYDRO POLE
 - EXISTING MAINTENANCE HOLE
 - EXISTING MONITORING WELL
 - EXISTING TREE
 - ROAD RESTORATION
 - BOULEVARD RESTORATION
 - DRIVEWAY RESTORATION
 - IMPACTED ENVIRONMENTAL PLUME (PALMER)
 - BELFORM INSULATION (OR APPROVED EQUIVALENT)
 - WATERMAIN TRENCH CONFIRMED BY 45IGHT GPR INVESTIGATION FEBRUARY 2024

RECORD DRAWING

NOTES:
 1. REFER TO DWG 501-504 FOR REMOVAL PLANS
 2. ALL DISTURBED LINE PAINTING TO BE RE-INSTATED TO EXISTING CONDITIONS

1. TOPOGRAPHIC SURVEY PROVIDED BY SCHAEFER DEALOY BENNET LTD., OCTOBER 2021
 UTILITY INVESTIGATION PROVIDED BY 45IGHT UTILITY ENGINEERS DATED JANUARY 18 2023

REVISIONS

No.	DESCRIPTION	DATE	BY	APPROVED
1.	ISSUED FOR 3RD ENGINEERING SUBMISSION	OCT 30/23	ERS	
2.	ISSUED FOR 4TH ENGINEERING SUBMISSION	DEC 18/23	ERS	
3.	ISSUED FOR CONSTRUCTION	FEB 13/24	ERS	
4.	RE-ISSUED FOR CONSTRUCTION	FEB 27/24	ERS	
5.	RE-ISSUED FOR CONSTRUCTION	MAR 25/24	ERS	
6.	REVISED SKEENA ROAD ALIGNMENT	APR 23/24	ERS	
7.	REVISED ALIGNMENT AT BOOSTER PUMPING STATION	AUG 28/24	ERS	
8.	REVISIONS TO SUPPORT BUILDING PERMIT APPLICATIONS	JAN 20/25	ERS	
9.	RECORD DRAWING SUBMISSION	MAR 2025	M.P.	

SGS consulting group ltd
 30 CENTURIAN DRIVE, SUITE 500
 MARKHAM, ONTARIO L3R 8B8
 TEL: (905) 475-3300
 FAX: (905) 475-8335

PEC COMMUNITY PARTNERS INC.
BASE31 REVITALIZATION DISTRICT - PHASE 1
SERVICING PLAN 3

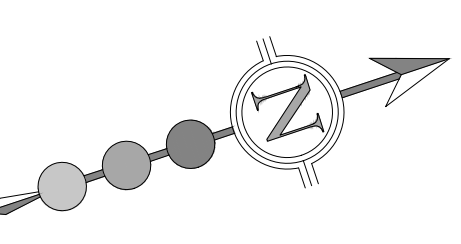
DATE: MARCH 2025	DESIGNED BY: E.S.	CHECKED BY: P.G.
SCALE: 1:500	DRAWN BY: E.S.	CHECKED BY: S.M.S.

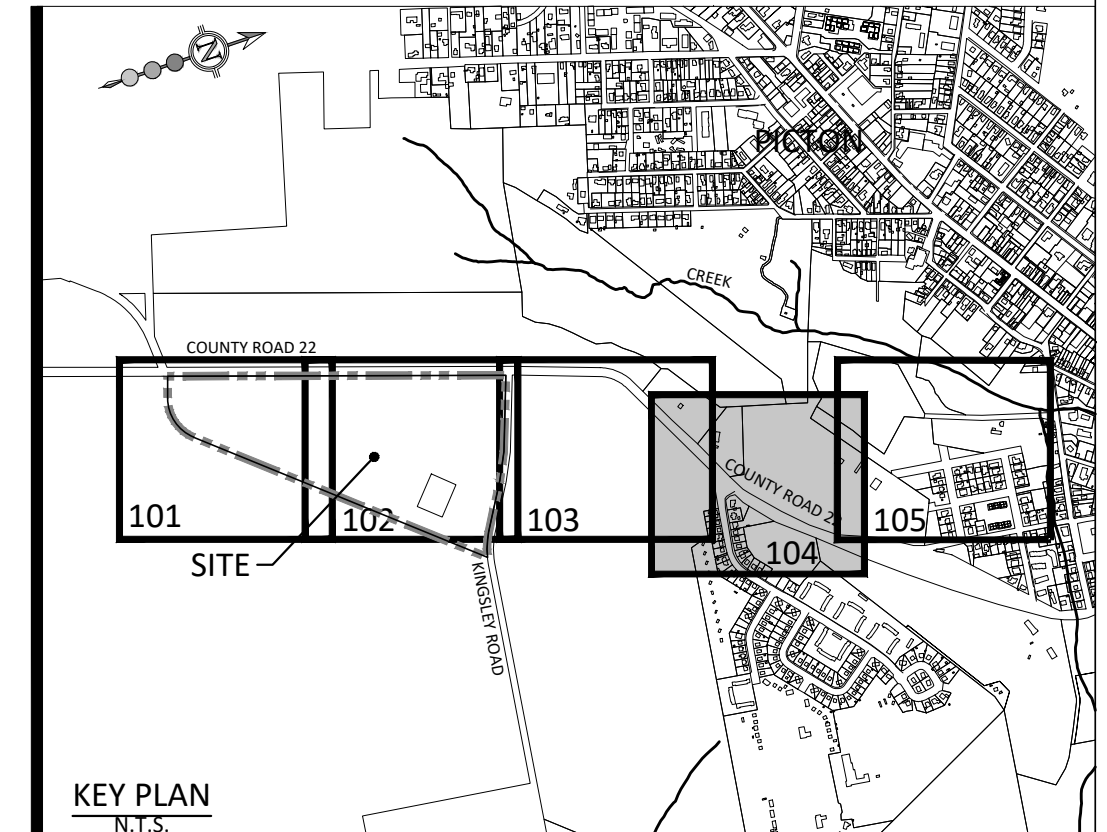
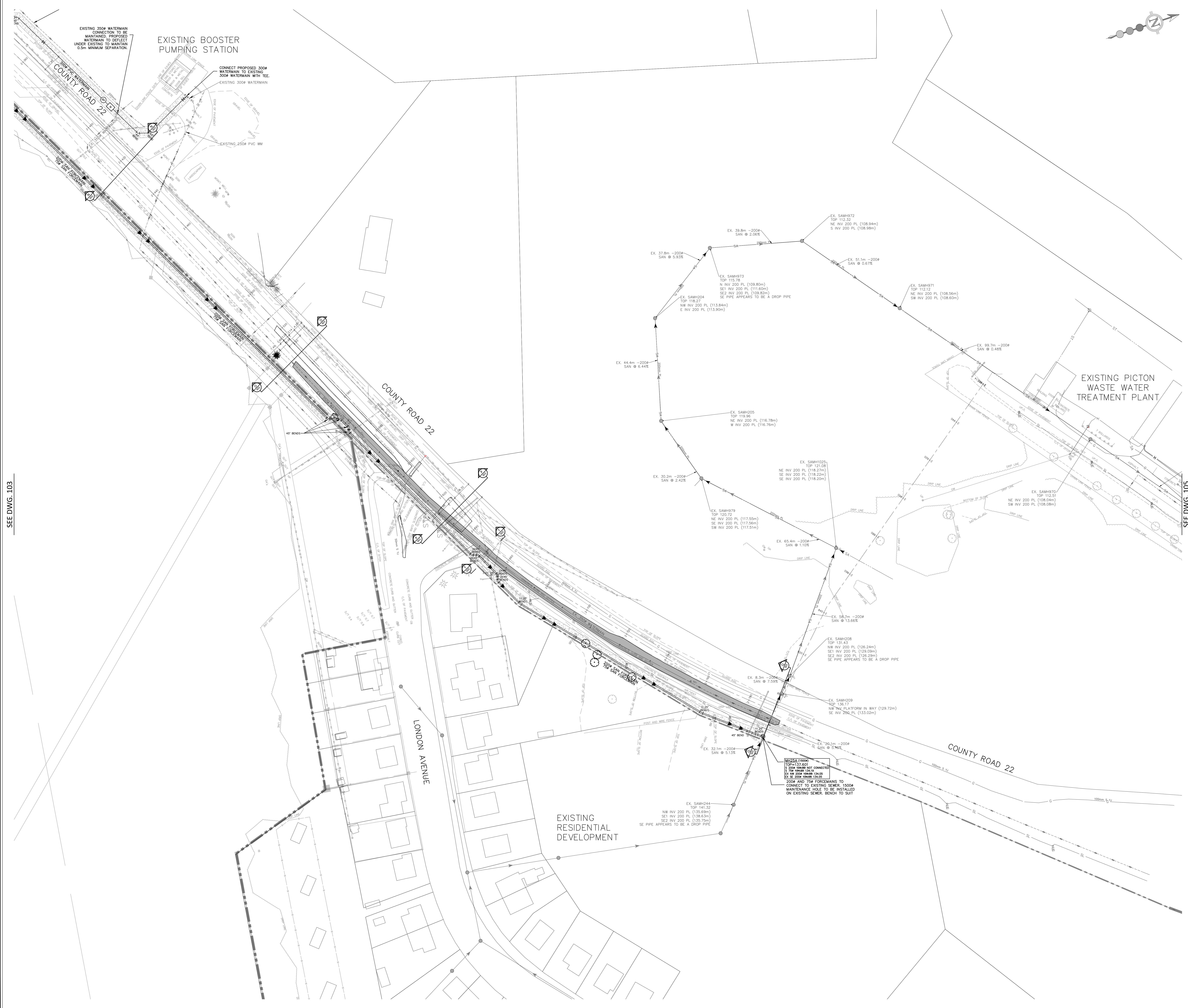
APPROVED AS TO FORM IN RELIANCE UPON THE PROFESSIONAL SKILL AND ABILITY OF SGS CONSULTING GROUP LTD. CONSULTING ENGINEERS AS TO DESIGN AND SPECIFICATION.
 APPROVED VIA EMAIL: 23 DECEMBER 2023
 Peter Meyer, P.Eng. Date
 Director of Development Services

PROJECT NO: **2365**
 DRAWING NO: **103**

SEE DWG. 102

SEE DWG. 104





BENCHMARK: ELEV. 141.477m
 ELEVATIONS SHOWN HEREON ARE GEODETIC AND ARE REFERRED TO MNRF BENCHMARK NO. 000800284 HAVING A PUBLISHED ELEVATION TO 451.477 METRES.

LEGEND:

---	PROPERTY LINE
—○—	SANITARY SEWER WITH MANHOLE
—○—	SANITARY FORCEMAIN
—	WATERMAIN
□	METER CHAMBER
⊖	BACKFLOW PREVENTOR (CSA B64.10 AND B64.10.01)
⊕	WATER VALVE
⊕	FIRE HYDRANT
⊕	WATER SAMPLING STATION
⊕	WATER SAMPLING STATION
⊕	REDUCER
⊕	CROSS SECTION
⊕	BOREHOLE
⊕	PROPOSED SIGNAGE
⊕	FILTREX DAM WITH SOCK
⊕	TRENCH PLUG PER OPSD 802.095
⊕	SANITARY SEWER CLEANOUT
⊕	EXISTING WATERMAIN
⊕	EXISTING GAS
⊕	EXISTING CHAINLINK FENCE
⊕	EXISTING OVERHEAD WIRES
⊕	EXISTING STORM
⊕	EXISTING SANITARY
⊕	SUE ELECTRICAL PRIVATE QLB
⊕	SUE HYDRO QLB
⊕	EXISTING BELL
⊕	EXISTING UNKNOWN CONDUCTIVE
⊕	EXISTING STREETLIGHT
⊕	EXISTING SANITARY MAINTENANCE HOLE
⊕	EXISTING STORM MAINTENANCE HOLE
⊕	EXISTING CATCHBASIN
⊕	EXISTING WATER VALVE
⊕	EXISTING HYDRANT
⊕	EXISTING SIGN
⊕	EXISTING HYDRO POLE
⊕	EXISTING MAINTENANCE HOLE
⊕	EXISTING MONITORING WELL
⊕	EXISTING TREE
⊕	ROAD RESTORATION
⊕	BOULEVARD RESTORATION
⊕	DRIVEWAY RESTORATION
⊕	IMPACTED ENVIRONMENTAL PLUME (PALMER)
⊕	BELFORM INSULATION (OR APPROVED EQUIVALENT)
⊕	WATERMAIN TRENCH CONFIRMED BY 45IGHT GPR INVESTIGATION FEBRUARY 2024

RECORD DRAWING

NOTES:
 1. REFER TO DWG 501-504 FOR REMOVAL PLANS
 2. ALL DISTURBED LINE PAINTING TO BE RE-INSTATED TO EXISTING CONDITIONS
 TOPOGRAPHIC SURVEY PROVIDED BY SCHAEFER DEALOYD BENNETT LTD., OCTOBER 2022
 UTILITY INVESTIGATION PROVIDED BY 45IGHT UTILITY ENGINEERS DATED JANUARY 18 2023

REVISIONS

No.	DESCRIPTION	DATE	BY	APPROVED
1.	ISSUED FOR 3RD ENGINEERING SUBMISSION	OCT 30/23	ERS	
2.	ISSUED FOR 4TH ENGINEERING SUBMISSION	DEC 18/23	ERS	
3.	ISSUED FOR CONSTRUCTION	FEB 13/24	ERS	
4.	RE-ISSUED FOR CONSTRUCTION	FEB 27/24	ERS	
5.	RE-ISSUED FOR CONSTRUCTION	MAR 25/24	ERS	
6.	REVISED SKEENA ROAD ALIGNMENT	APR 23/24	ERS	
7.	REVISED ALIGNMENT AT BOOSTER PUMPING STATION	AUG 28/24	ERS	
8.	REVISIONS TO SUPPORT BUILDING PERMIT APPLICATIONS	JAN 20/25	ERS	
9.	RECORD DRAWING SUBMISSION	MAR 2025	M.P.	

SGS consulting group ltd
 30 CENTURIAN DRIVE, SUITE 500
 MARKHAM, ONTARIO L3R 8B8
 TEL: (905) 475-3900
 FAX: (905) 475-8335

PEC COMMUNITY PARTNERS INC.
BASE31 REVITALIZATION DISTRICT - PHASE 1
SERVICING PLAN 4

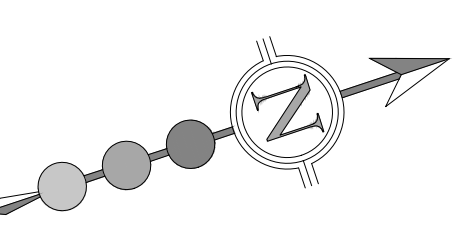
DATE: MARCH 2025	DESIGNED BY: E.S.	CHECKED BY: P.G.
SCALE: 1:500	DRAWN BY: E.S.	CHECKED BY: S.M.S.

APPROVED AS TO FORM IN RELIANCE UPON THE PROFESSIONAL SKILL AND ABILITY OF SGS CONSULTING GROUP LTD. CONSULTING ENGINEERS AS TO DESIGN AND SPECIFICATION.
 APPROVED VIA EMAIL: 23 DECEMBER 2023
 Peter Meyer, P.Eng. Date
 Director of Development Services

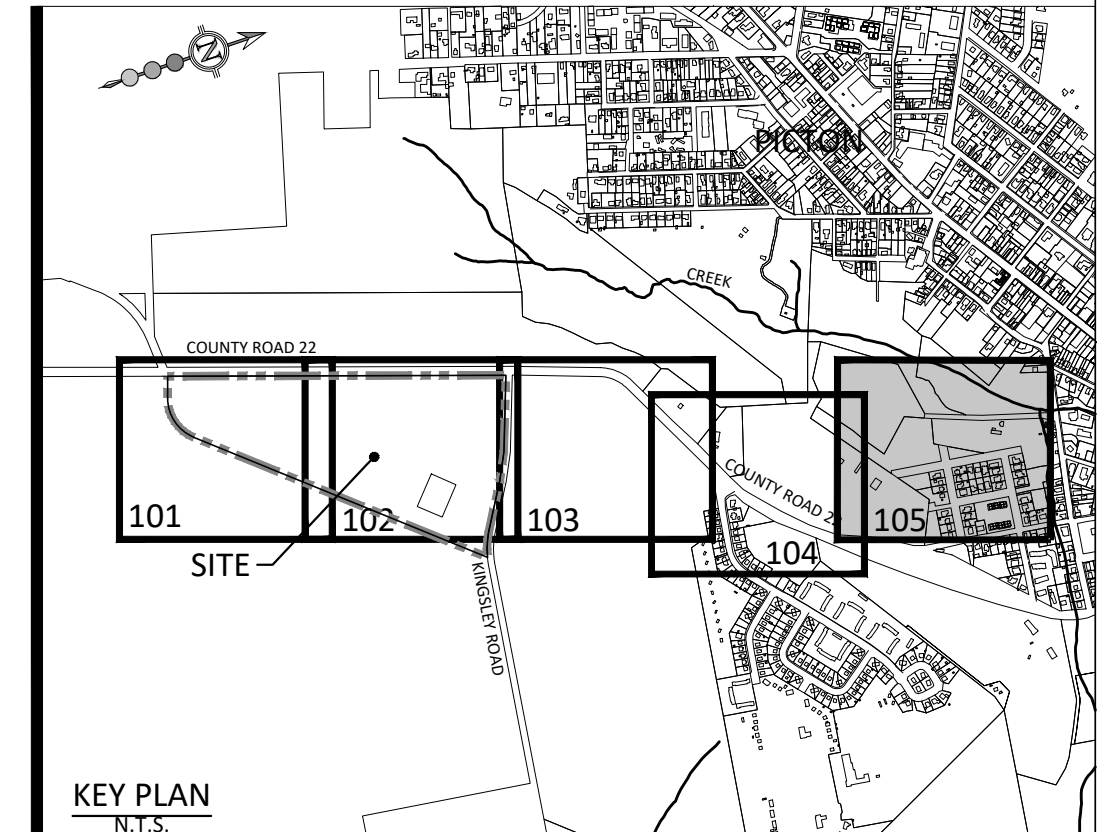
PROJECT NO: 2365
 DRAWING NO: 104

SEE DWG. 103

SEE DWG. 105



SEE DWG. 104



BENCHMARK: ELEV. 141.477m
 ELEVATIONS SHOWN HEREON ARE GEODETIC AND ARE REFERRED TO MNRH BENCHMARK NO. 000800268 HAVING A PUBLISHED ELEVATION TO 41.477 METRES.

- LEGEND:**
- PROPERTY LINE
 - SANITARY SEWER WITH MANHOLE
 - SANITARY FORCEMAIN
 - WATERMAIN
 - METER CHAMBER
 - BACKFLOW PREVENTOR (CSA B64.10 AND B64.10.01)
 - ⊕ WATER VALVE
 - ⊕ FIRE HYDRANT
 - ⊕ WATER SAMPLING STATION
 - ⊕ WATER SAMPLING STATION
 - REDUCER
 - CROSS SECTION
 - ⊕ BOREHOLE
 - PROPOSED SIGNAGE
 - FILTREC DAM WITH SOCK
 - TRENCH PLUG PER OPSD 802.095
 - SANITARY SEWER CLEANOUT
 - EXISTING WATERMAIN
 - EXISTING GAS
 - EXISTING CHAINLINK FENCE
 - EXISTING OVERHEAD WIRES
 - EXISTING STORM
 - EXISTING SANITARY
 - SUE ELECTRICAL PRIVATE QLB
 - SUE HYDRO QLB
 - EXISTING BELL
 - EXISTING UNKNOWN CONDUCTIVE
 - EXISTING STREETLIGHT
 - EXISTING SANITARY MAINTENANCE HOLE
 - EXISTING STORM MAINTENANCE HOLE
 - EXISTING CATCHBASIN
 - EXISTING WATER VALVE
 - EXISTING HYDRANT
 - EXISTING SIGN
 - EXISTING HYDRO POLE
 - EXISTING MAINTENANCE HOLE
 - EXISTING MONITORING WELL
 - EXISTING TREE
 - ROAD RESTORATION
 - BOULEVARD RESTORATION
 - DRIVEWAY RESTORATION
 - IMPACTED ENVIRONMENTAL PLUME (PALMER)
 - BELFORM INSULATION (OR APPROVED EQUIVALENT)
 - WATERMAIN TRENCH CONFIRMED BY 45IGHT GPR INVESTIGATION FEBRUARY 2024

RECORD DRAWING

NOTES:
 1. REFER TO DWG 501-504 FOR REMOVAL PLANS
 2. ALL DISTURBED LINE PAINTING TO BE RE-INSTATED TO EXISTING CONDITIONS

TOPOGRAPHIC SURVEY PROVIDED BY SCHLESER DEADON BENNET LTD., OCTOBER 2021
 UTILITY INVESTIGATION PROVIDED BY 45IGHT UTILITY ENGINEERS DATED JANUARY 18 2023

REVISIONS			
No.	DESCRIPTION	DATE	BY / APPROVED
1.	ISSUED FOR 3RD ENGINEERING SUBMISSION	OCT 30/23	ERS
2.	ISSUED FOR 4TH ENGINEERING SUBMISSION	DEC 18/23	ERS
3.	ISSUED FOR CONSTRUCTION	FEB 13/24	ERS
4.	RE-ISSUED FOR CONSTRUCTION	FEB 27/24	ERS
5.	RE-ISSUED FOR CONSTRUCTION	MAR 25/24	ERS
6.	REVISED SKENEVA ROAD ALIGNMENT	APR 23/24	ERS
7.	REVISED ALIGNMENT AT BOOSTER PUMPING STATION	AUG 28/24	ERS
8.	REVISIONS TO SUPPORT BUILDING PERMIT APPLICATIONS	JAN 20/25	ERS
9.	RECORD DRAWING SUBMISSION	MAR 20/25	M.P.

SGS consulting group ltd
 30 CENTURIAN DRIVE, SUITE 500
 MARKHAM, ONTARIO L3R 8B8
 TEL: (905) 475-3300
 FAX: (905) 475-8335

PEC COMMUNITY PARTNERS INC.
BASE31 REVITALIZATION DISTRICT - PHASE 1
SERVICING PLAN 5

DATE: MARCH 2025	DESIGNED BY: E.S.	CHECKED BY: P.G.
SCALE: 1:500	DRAWN BY: E.S.	CHECKED BY: S.M.S.

APPROVED AS TO FORM IN RELIANCE UPON THE PROFESSIONAL SKILL AND ABILITY OF SGS CONSULTING GROUP LTD. CONSULTING ENGINEERS AS TO DESIGN AND SPECIFICATION.
 APPROVED VIA EMAIL: 23 DECEMBER 2023
 Peter Meyer, P.Eng. Date
 Director of Development Services

PROJECT NO: 2365
 DRAWING NO: 105