

SITE AREA:	31 893.79 m <sup>2</sup>	100%
NUMBER OF UNITS:		111 UNITS
3 STOREY REAR GARAGE TOWNHOUSES, TYPE 'A'		25 UNITS
BUNGALOW TOWNHOUSES WITH LOFT, TYPE 'B'		9 UNITS
3 STOREY TOWNHOUSES, TYPE 'C'		53 UNITS
3 STOREY BACK-TO-BACK TOWNHOUSES, TYPE 'D'		24 UNITS

R3-75-H - 71 UNITS	SITE AREA	15 180.21 m <sup>2</sup>	- 100%
<b>COVERAGE</b>			
BLOCK 1, 3 STOREY REAR GARAGE TOWNHOUSES, TYPE 'A', 5 UNITS		374.07 m <sup>2</sup>	
BLOCK 2, 3 STOREY REAR GARAGE TOWNHOUSES, TYPE 'A', 4 UNITS		300.14 m <sup>2</sup>	
BLOCK 3, 3 STOREY REAR GARAGE TOWNHOUSES, TYPE 'A', 6 UNITS		447.68 m <sup>2</sup>	
BLOCK 4, 3 STOREY REAR GARAGE TOWNHOUSES, TYPE 'A', 4 UNITS		300.14 m <sup>2</sup>	
BLOCK 5, 3 STOREY REAR GARAGE TOWNHOUSES, TYPE 'A', 6 UNITS		447.68 m <sup>2</sup>	
BLOCK 6, 3 STOREY BACK-TO-BACK TOWNHOUSES, TYPE 'D', 10 UNITS		590.10 m <sup>2</sup>	
BLOCK 7, 3 STOREY BACK-TO-BACK TOWNHOUSES, TYPE 'D', 8 UNITS		472.90 m <sup>2</sup>	
BLOCK 8, 3 STOREY BACK-TO-BACK TOWNHOUSES, TYPE 'D', 6 UNITS		357.09 m <sup>2</sup>	
BLOCK 9, 3 STOREY TOWNHOUSES, TYPE 'C', 8 UNITS		617.87 m <sup>2</sup>	
BLOCK 10, 3 STOREY TOWNHOUSES, TYPE 'C', 10 UNITS		771.31 m <sup>2</sup>	
BLOCK 11, 3 STOREY TOWNHOUSES, TYPE 'C', 4 UNITS		310.99 m <sup>2</sup>	
		4 989.97 m <sup>2</sup>	
COVERED PORCH		292.55 m <sup>2</sup>	
	TOTAL	5 282.53 m <sup>2</sup>	- 34.97%
<b>PAVED AREA (DRIVEWAYS)</b>			
		4 926.06 m <sup>2</sup>	- 32.45 %
<b>LANDSCAPE AREA</b>			
SOFT LANDSCAPE	4 053.82 m <sup>2</sup>		
HARD LANDSCAPE	888.63 m <sup>2</sup>		
STAIRS	29.17 m <sup>2</sup>		
		4 971.62 m <sup>2</sup>	- 32.58 %
<b>PARKING SPACES - 108 SPACES, INCLUDED:</b>			
GARAGE - 96 SPACES; SURFACE PARKING - 12 SPACES.			

R3-76-H - 40 UNITS	MINIMUM LOT AREA - 152.32 m <sup>2</sup>		
	SITE AREA	13 365.42 m <sup>2</sup>	- 100%
<b>COVERAGE</b>			
BLOCK 12, BUNGALOW TOWNHOUSES WITH LOFT, TYPE 'B', 9 UNITS		1080.60 m <sup>2</sup>	
BLOCK 13, 3 STOREY TOWNHOUSES, TYPE 'C', 6 UNITS		464.43 m <sup>2</sup>	
BLOCK 14, 3 STOREY TOWNHOUSES, TYPE 'C', 7 UNITS		541.15 m <sup>2</sup>	
BLOCK 15, 3 STOREY TOWNHOUSES, TYPE 'C', 6 UNITS		464.43 m <sup>2</sup>	
BLOCK 16, 3 STOREY TOWNHOUSES, TYPE 'C', 6 UNITS		464.43 m <sup>2</sup>	
BLOCK 17, 3 STOREY TOWNHOUSES, TYPE 'C', 6 UNITS		464.43 m <sup>2</sup>	
		3 479.47 m <sup>2</sup>	
COVERED PORCH		146.73 m <sup>2</sup>	
	TOTAL	3 626.20 m <sup>2</sup>	- 27.13 %
<b>PAVED AREA (DRIVEWAYS)</b>			
		3 587.66 m <sup>2</sup>	- 26.84 %
<b>LANDSCAPE AREA</b>			
SOFT LANDSCAPE	5 296.10 m <sup>2</sup>		
HARD LANDSCAPE	814.35 m <sup>2</sup>		
STAIRS	41.11 m <sup>2</sup>		
		6 151.56 m <sup>2</sup>	- 46.03 %
<b>PARKING SPACES - 60 SPACES, INCLUDED:</b>			
GARAGE - 40 SPACES; DRIVEWAYS - 5 SPACES; SURFACE PARKING - 15 SPACES.			

<b>CL-33-H - COMMERCIAL BLDG.</b>			
SITE AREA	1 233.48 m <sup>2</sup>		- 100%
COVERAGE	225.00 m <sup>2</sup>		- 18.24 %
PAVED AREA	407.82 m <sup>2</sup>		- 33.06 %
LANDSCAPE AREA	600.66 m <sup>2</sup>		- 48.70 %
SOFT LANDSCAPE	447.75 m <sup>2</sup>		
HARD LANDSCAPE	152.91 m <sup>2</sup>		
<b>PARKING SPACES - 10 SPACES</b>			

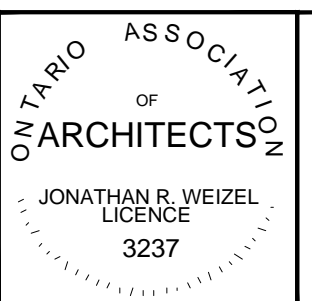
<b>OS - STORM POND</b>			
SITE AREA	2 114.68 m <sup>2</sup>		- 100%
LANDSCAPE AREA	600.66 m <sup>2</sup>		- 100 %

<b>PARKING SIZE</b>			
REQUIRED: MIN. AREA 16.7 m <sup>2</sup> , MIN. WIDTH 2.7 m.			
PROPOSED:			
SURFACE SPACES	6.0 x 2.785 = 16.71 m <sup>2</sup>	B-F SPACES	6.0 x 4.0 = 24.0 m <sup>2</sup>
GARAGE TYPE 'A'	2 x 6.15 x 2.720 = 2 x 16.73 m <sup>2</sup>		33.46 m <sup>2</sup>
GARAGE TYPE 'B'	6.0 x 3.0 = 18.0 m <sup>2</sup>		
GARAGE TYPE 'C'	6.032 x 3.0 = 18.1 m <sup>2</sup>		
GARAGE TYPE 'D'	6.0 x 3.0 = 18.0 m <sup>2</sup>		

10		
9		
8		
7		
6	Revision Site Plan	Aug 05, 2025
No.	Reference	Date
Revisions		

THE GENERAL CONTRACTOR SHALL CHECK AND VERIFY ALL DIMENSIONS AND REPORT ALL ERRORS AND OMISSIONS TO THE ARCHITECT  
**DO NOT SCALE THE DRAWINGS**  
 THIS DRAWING SHALL NOT BE USED FOR CONSTRUCTION PURPOSES UNTIL SIGNED BY THE ARCHITECT

SHEET PRINT SIZE 36" x 24"  
 36 JANESVILLE ROAD  
 Thornhill, Ontario L4J 6Z9  
 Telephone.....(905) 707-1996  
 Facsimile.....(905) 707-3474



**JONATHAN WEIZEL ARCHITECT**

Project  
**49 & 57 FOLKARD LANE**  
 PICTON, PRINCE EDWARD COUNTY, ONTARIO

<b>PRELIMINARY</b>			
Drawing Title			
SITE PLAN			
Drawn by:	GN	Date	AUG 05, 2025
Checked by:	JW	Scale	1:400
Project Number	219/27	Drawing Number	A-001