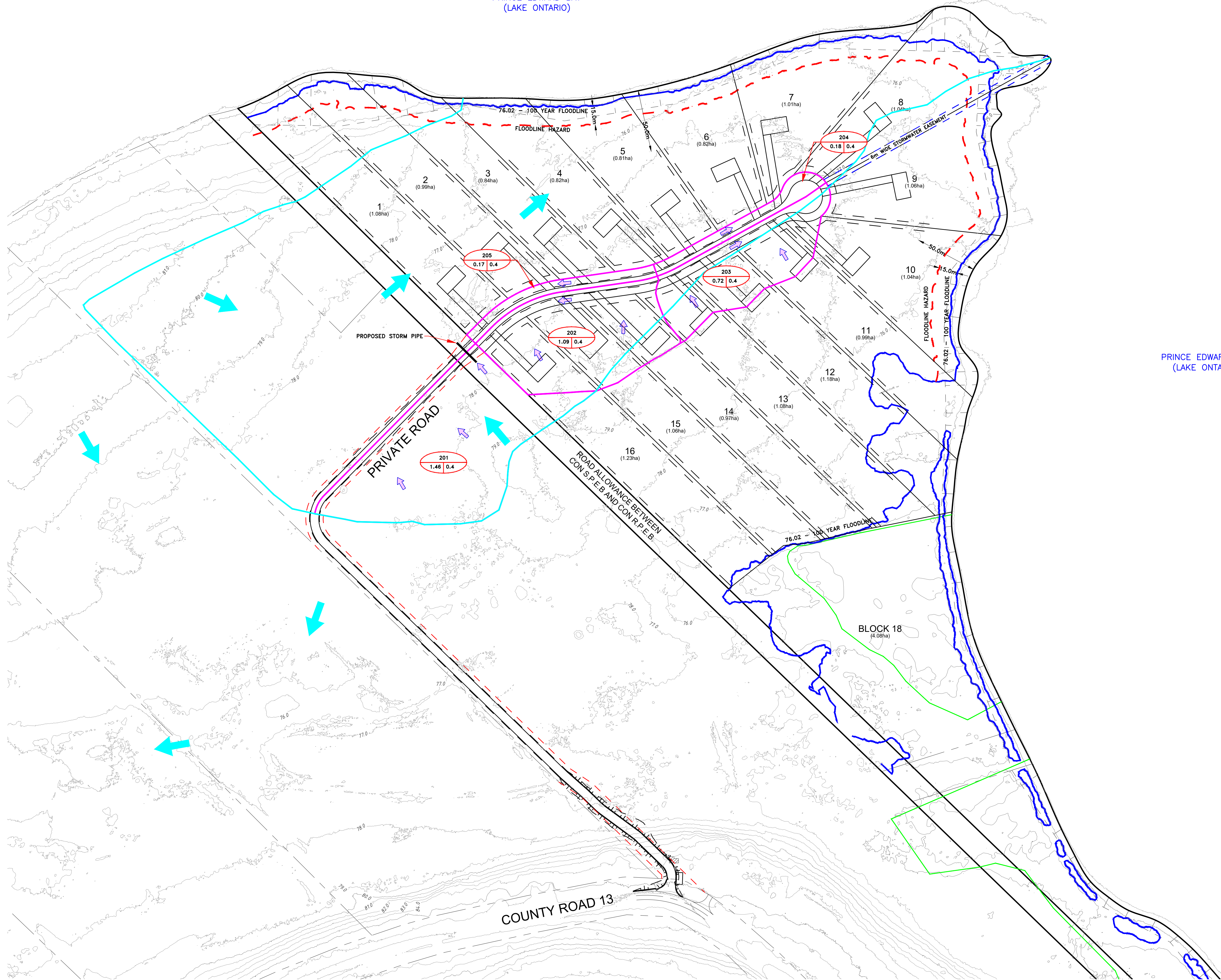


PRINCE EDWARD BAY
(LAKE ONTARIO)



PRINCE EDWARD BAY
(LAKE ONTARIO)

GENERAL NOTES:

- ALL INFORMATION TO BE VERIFIED ON SITE PRIOR TO COMMENCING ANY WORK. ANY DISCREPANCIES ARE TO BE REPORTED TO THE CONSULTANT IMMEDIATELY.
- ALL UTILITY LOCATIONS SHOWN ON THE DRAWINGS ARE APPROXIMATE. THE CONTRACTOR SHALL CONFIRM THE LOCATION ON SITE AND ASSUME ALL LIABILITY FOR DAMAGE TO ALL UTILITIES.
- EXCLUDING THE BENCHMARK AND DESCRIPTION PROVIDED FOR THIS PROJECT, NO OTHER ELEVATIONS ARE TO BE USED AS A REFERENCE ELEVATION FOR ANY PURPOSE.

METRIC NOTE:

- ALL DIMENSIONS SHOWN ARE IN METRES OR MILLIMETRES, UNLESS OTHERWISE NOTED.

GEOMETRIC NOTE:

- ALL SURVEY DATA SHOWN ON THIS DRAWING WAS RECORDED USING REAL-TIME KINETIC (RTK) GPS OBSERVATIONS IN REFERENCE TO UTM 18 NORTH COORDINATE SYSTEM.
- ALL ELEVATIONS ARE IN REFERENCE TO LOCAL DATUM NADS - GEODETIC MODEL HTF.2 UNLESS DESCRIBED OTHERWISE.
- ** DRAWINGS ARE NOT TO BE SCALED **

REVISIONS

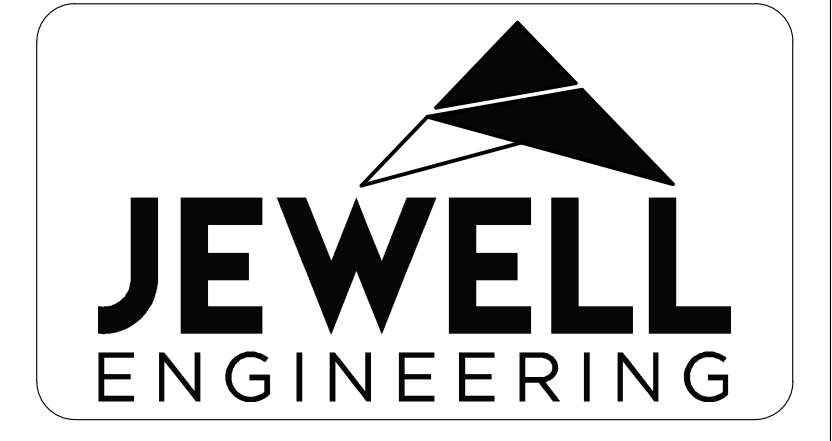
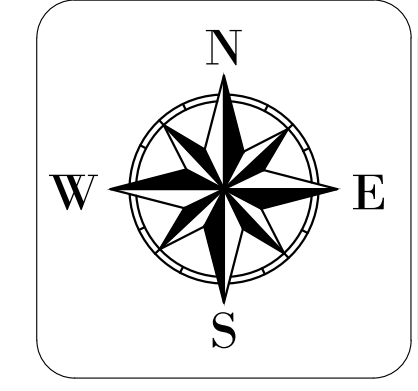
NO.	DATE	DESCRIPTION	BY

LEGEND

- FLOODLINE HAZARD
- 100-YR FLOODLINE - 76.02m
- WETLAND BOUNDARY
- STORMWATER CATCHMENTS
- EXISTING DRAINAGE DIVIDE

CATCHMENTS AREA ID
100 DRAINAGE AREA (ha) & RUNOFF COEFFICIENT
46.6 | 0.6

→ PROPOSED OVERLAND FLOW
→ EXISTING OVERLAND FLOW



FLATT'S POINT
SUBDIVISION
COUNTY OF PRINCE EDWARD

DRAINAGE PLAN

DRAWN BY: JH PROJECT NO: 210-5054
DESIGNED BY: DATE: March 2026
CHECKED BY: BK SCALE: HORIZONTAL - 1:1,500
APPROVED BY: CONTRACT NO: VERTICAL - N/A DRAWING NO: SWM-1