

# PRELIMINARY

**DRAFT PLAN OF CONDOMINIUM**  
**OF PART OF BLOCK 19**  
**REGISTERED PLAN No. 47M-###**  
**PRINCE EDWARD BAY**  
**MUNICIPALITY OF THE COUNTY**  
**OF PRINCE EDWARD**  
 (GEOGRAPHIC TOWNSHIP OF SOUTH MARYSBURGH)

SCALE: 1 : 1500  
 50m 25 0 50 100 metres

**METRIC**  
 DISTANCES & COORDINATES SHOWN ON THIS PLAN  
 ARE IN METRES AND CAN BE CONVERTED TO FEET  
 BY DIVIDING BY 0.3048

**HOPKINS CHITTY LAND SURVEYORS INC.**  
 2026

**SURVEYOR'S CERTIFICATE:**  
 I CERTIFY THAT THE BOUNDARIES OF THE LANDS TO  
 BE SUBDIVIDED AND THEIR RELATIONSHIP TO THE  
 ADJACENT LANDS ARE CORRECTLY SHOWN.

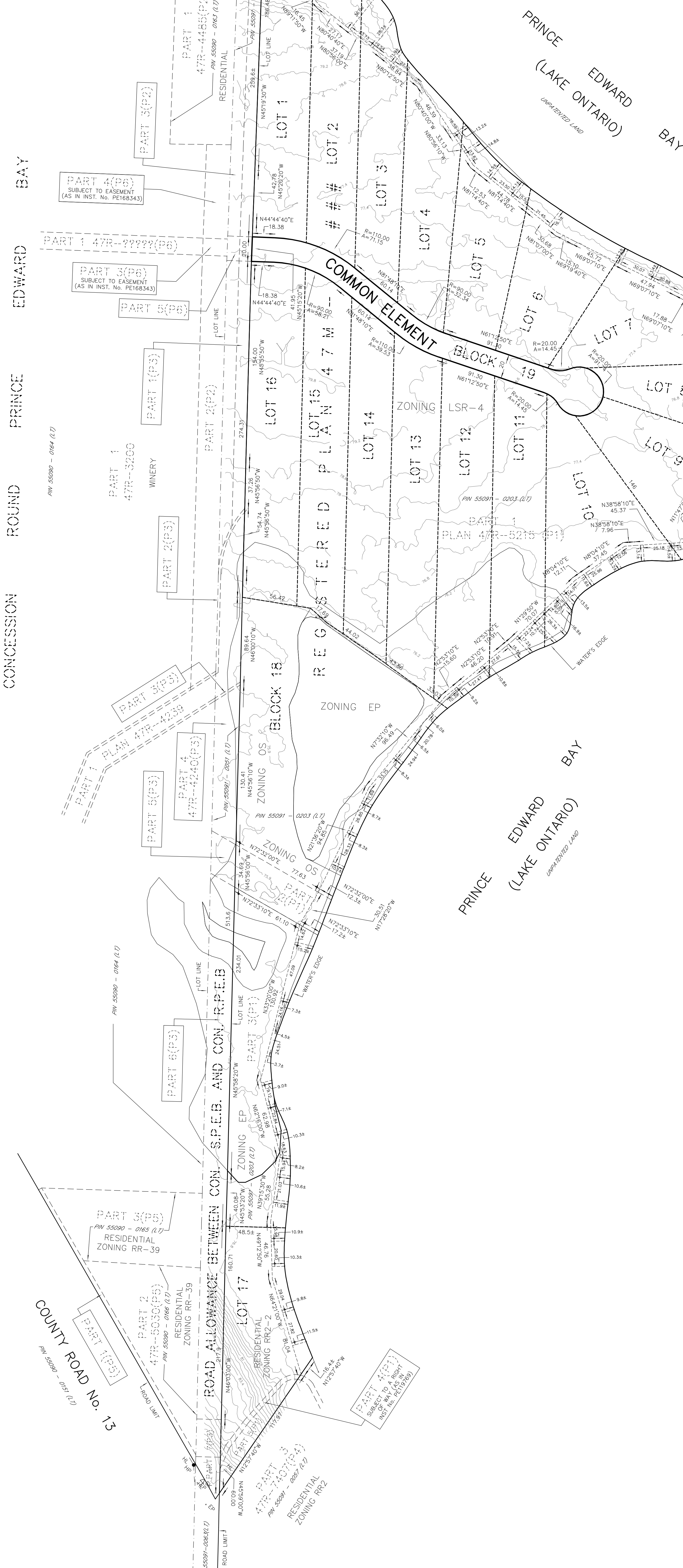
MAY 7, 2026  
 LESLIE M. HIGGINSON  
 ONTARIO LAND SURVEYOR

THIS PLAN OF SURVEY RELATES TO AOLS SUBMISSION FORM  
 NUMBER \_\_\_\_\_

**OWNER'S CERTIFICATE:**  
 WE AUTHORIZE HOPKINS CHITTY LAND SURVEYORS INC.  
 TO PREPARE THIS DRAFT PLAN OF SUBDIVISION.

DATE \_\_\_\_\_ 712223 N.B. LTD  
 MICHAEL KERFORD - DIRECTOR  
 (I HAVE AUTHORITY TO  
 BIND THE CORPORATION)

CONCESSION ROUND PRINCE EDWARD BAY



**NOTE & LEGEND:**

BEARINGS SHOWN HEREON ARE GRID BEARINGS DERIVED FROM  
 GPS OBSERVATIONS USING NATURAL RESOURCES CANADA (NRCAN)  
 PRECISE POINT POSITIONING (PPP) SERVICE AND ARE RELATED  
 TO UTM ZONE 18, (75° WEST LONGITUDE) NAD83 (CSRS) (2010).

ALL DISTANCES SHOWN HEREON ARE HORIZONTAL GROUND DISTANCES.  
 GRID DISTANCES CAN BE CALCULATED BY MULTIPLYING THE GROUND DISTANCES  
 SHOWN ON THE PLAN BY THE COMBINED SCALE FACTOR OF 0.999912195.

- |      |         |                              |
|------|---------|------------------------------|
| □    | DENOTES | SURVEY MONUMENT PLANTED      |
| ■    | DENOTES | SURVEY MONUMENT FOUND        |
| SSB  | -       | SHORT STANDARD IRON BAR      |
| SIB  | -       | STANDARD IRON BAR            |
| IB   | -       | IRON BAR                     |
| RIB  | -       | ROUND IRON BAR               |
| WT   | -       | WITNESS                      |
| CALC | -       | CALCULATED                   |
| S    | -       | SET                          |
| M    | -       | MEASURED                     |
| 776  | -       | MICHAEL J. MCPALPINE, O.L.S. |
| 1363 | -       | B. ROGER PICKARD, O.L.S.     |
| P1   | -       | PLAN 47R-5215                |
| P2   | -       | PLAN 47R-4485                |
| P3   | -       | PLAN 47R-4240                |
| P4   | -       | PLAN 47R-7407                |
| P5   | -       | PLAN 47R-5030                |

THE CONTOURS SHOWN ON THIS PLAN HAVE BEEN CREATED FROM  
 GEOSPATIAL DATA AND PROVIDED BY QUINTE CONSERVATION AUTHORITY.

ADDITIONAL INFORMATION UNDER THE  
 PLANNING ACT SECTION 51.17 (A-L)  
 OF THE PLANNING ACT.

- |    |  |
|----|--|
| A) | SEE PLAN                                       |
| B) | SEE PLAN                                       |
| C) | SEE PLAN                                       |
| D) | RESIDENTIAL                                    |
| E) | SEE PLAN                                       |
| G) | SEE PLAN                                       |
| H) | WELLS  |
| I) | CLAY LOAM COVER AND FILL                       |
| J) | SEE PLAN                                       |
| K) | HYDRO AND EMERGENCY SERVICES<br>ARE AVAILABLE. |
| L) | SEE PLAN                                       |

NO PERSON MAY COPY, REPRODUCE, DISTRIBUTE OR ALTER  
 THIS PLAN IN WHOLE OR IN PART WITHOUT THE WRITTEN  
 PERMISSION OF HOPKINS CHITTY SURVEYORS INC.

© COPYRIGHT  
 HOPKINS CHITTY LAND SURVEYORS INC.  
 LESLIE M. HIGGINSON O.L.S. 2026

\*THIS IS NOT AN  
 ORIGINAL COPY  
 UNLESS EMBOSSED  
 WITH A SEAL

DATED MAY 7, 2026  
**HOPKINS CHITTY LAND SURVEYORS INC.**  
 1224 GARDINERS ROAD, SUITE 102  
 KINGSTON, ONTARIO K7P 0G2  
 (613) 384-9266 (fax) 384-3513 www.hopkinschitty.com

FILE: MA'H S.P.E.B | H-00109 GNDC\_DP\_CONDO