

GENERAL NOTES

CONTRACTOR IS RESPONSIBLE FOR ALL LOCATES INCLUDING ALL UNDERGROUND SERVICES PRIOR TO ANY EXCAVATION OR INSTALLATIONS. THE CONTRACTOR IS REQUIRED TO NOTIFY THE VARIOUS UTILITY COMPANIES 48 HOURS PRIOR TO THE COMMENCEMENT OF ANY WORK.

ANY ACCOMPANYING DOCUMENTATION RELATING TO THE LANDSCAPE PLAN AND/OR PRESERVATION PLAN SUCH AS TENDER DOCUMENTS AND CHANGE NOTICES ARE TO BE ENDORSED BY J.D.B. ASSOCIATES LIMITED PRIOR TO THE BEGINNING OF ANY SITE WORKS. IN THE EVENT THAT OF A DISCREPANCY THE DRAWING SHALL BE ASSUMED CORRECT.

IT IS THE RESPONSIBILITY OF THE PERSON OR PERSONS RESPONSIBLE FOR THE CONSTRUCTED WORKS TO NOTIFY THE LANDSCAPE ARCHITECT WHEN PREPARED FOR ANY REQUIRED INSPECTIONS AND SIGN OFFS.

SCHEDULED MEETINGS SHALL TAKE PLACE AT THE CLOSEST MUTUALLY CONVENIENT TIME.

No.	REVISION	DATE	APRVD.
1.	ZBA AND SPA SUBMISSION	June 7, 2024	SJT
2.	ZBA AND SPA SUBMISSION	November 24, 2023	SJT
3.	ZBA AND SPA SUBMISSION	May 28, 2026	SJT

ALL DRAWINGS AND SPECIFICATIONS ARE INSTRUMENTS OF SERVICE AND ARE THE PROPERTY OF JDB ASSOCIATES LIMITED. DRAWINGS ARE NOT TO BE MODIFIED AND/OR REPRODUCED WITHOUT THE WRITTEN CONSENT OF JDB ASSOCIATES LIMITED. REPRODUCTION OF DRAWINGS IN ANY FORM WITHOUT THE CONSENT OF JDB ASSOCIATES LIMITED VOIDS THE DRAWING AT WHICH TIME JDB ASSOCIATES LIMITED ACCEPTS NO LIABILITY FOR THE DRAWING CONTENT OR WORKS RESULTING FROM SAID REPRODUCTION.

DRAWINGS MAY BE REPRODUCED BY MUNICIPAL AND GOVERNMENT AGENCIES RESPONSIBLE FOR APPROVALS FOR THEIR OWN USE. JDB ASSOCIATES RESERVES THE RIGHT TO WITHDRAW ANY DRAWING(S) FROM GOVERNMENT OR MUNICIPAL AGENCIES WHETHER APPROVED OR NOT IN THE EVENT THAT ACCOUNTS ARE NOT SETTLED OR REMAIN OUTSTANDING.

IT IS THE RESPONSIBILITY OF THE CONTRACTOR TO VERIFY ALL DIMENSIONS ON THE SITE AND REPORT ANY DISCREPANCIES OR VARIATIONS FROM THE SUPPLIED INFORMATION TO THE LANDSCAPE ARCHITECT WITH THE PROJECT. JDB ASSOCIATES LIMITED IS NOT RESPONSIBLE FOR THE ACCURACY OF SURVEY, ARCHITECTURAL, MECHANICAL, ENGINEERING OR ELECTRICAL INFORMATION SHOWN ON THE DRAWING. FOR FURTHER INFORMATION REFER TO APPROPRIATE SURVEY, ARCHITECTURAL, MECHANICAL, ENGINEERING OR ELECTRICAL DRAWINGS PRIOR TO PROCEEDING WITH ANY WORKS.

THIS DRAWING IS NOT TO BE SCALED.

LANDSCAPE PLAN

CODE	QNTY	COMMON NAME	BOTANICAL NAME	SIZE	FORM	SPACING	DETAIL	NOTES
DECIDUOUS TREES								
Agr	2	PAPERBARK MAPLE	<i>Acer griseum</i>	60 mm	W.B.	6.0 m o/c	D-1	Full Form
As	5	SUGAR MAPLE	<i>Acer saccharum</i>	60 mm	W.B.	9.0 m o/c	D-1	Full Form/ Fall pruning only
Co	4	COMMON HACKBERRY	<i>Celtis occidentalis</i>	60 mm	W.B.	9.0 m o/c	D-1	Full Form
GbP	3	PRINCETON SENTRY MAIDENHAIR TREE	<i>Ginkgo biloba 'Princeton Sentry'</i>	60 mm	W.B.	8.0 m o/c	D-1	Full Form
Gt	1	SHADEMASTER HONEYLOCUST	<i>Gleditsia triacanthos var. inermis 'Shademaster'</i>	60 mm	W.B.	9.0 m o/c	D-1	Full Form
MIR	6	RED SPLENDOR CRABAPPLE	<i>Malus 'Red Splendor'</i>	60 mm	W.B.	7.0 m o/c	D-1	Full Form
Qa	4	WHITE OAK	<i>Quercus alba</i>	60 mm	W.B.	15.0 m o/c	D-1	Spring planting/ Soil pH<7.5
Tt	3	STERLING SILVER LINDEN	<i>Tilia tomentosa 'Sterling Silver'</i>	60 mm	W.B.	9.0 m o/c	D-1	Full Form

CONIFEROUS TREES								
Ab	4	BALSAM FIR	<i>Abies balsamea</i>	200cm	w.b.	6m o/c	D-2	Full form / Do not cut leader
Pg	4	WHITE SPRUCE	<i>Picea glauca</i>	200cm	w.b.	5m o/c	D-2	Full form / Do not cut leader
PpG	3	COLORADO BLUE SPRUCE	<i>Picea pungens 'Glauca'</i>	200cm	w.b.	As Per Drawing	D-2	Full form / Do not cut leader
Ps	3	EASTERN WHITE PINE	<i>Pinus strobus</i>	200cm	w.b.	6m o/c	D-2	Full form / Do not cut leader

EVERGREENS								
JSM	4	MOFFET JUNIPER	<i>Juniperus scopulorum 'Moffettii'</i>	150cm	w.b.	0.90 m o/c	D-3	Full form / Container grown
Jw	8	BLUE RUG JUNIPER	<i>Juniperus horizontalis 'Wiltoni'</i>	50cm	3 gal.	0.90 m o/c	D-3	Full form / Container grown

HEDGES								
Box	67	MONT BRUNO BOXWOOD	<i>Buxus sempervirens 'Mont Bruno'</i>	30cm	2 gal.	0.45 m o/c	D-3	Hedge form / Container grown
SyMK	20	MISS KIM LILAC	<i>Syringa patula 'Miss Kim'</i>	60 cm	3 gal.	1.0m o/c	D-3	Clipped hedge at 1.0m ht
TmlH	37	HICK S YEW	<i>Taxus x media 'Hicksii'</i>	50cm	3 gal.	0.45m o/c	D-3	Clipped hedge at 1.5m ht

DECIDUOUS SHRUBS								
Aa	9	ROUNDLEAF SERVICEBERRY	<i>Amelanchier sanguinea</i>	60 cm	3 gal.	as shown	D-3	Full form / Container grown
Bt	13	BAILONE BARBERRY	<i>Berberis thunbergii 'Ruby Carousel'</i>	60 cm	3 gal.	0.70m o/c	D-3	Full form / Container grown
CaE	12	SILVER EDGE DOGWOOD	<i>Cornus alba 'Elegantissima'</i>	60 cm	3 gal.	1.10m o/c	D-3	Full form / Container grown
EaC	15	DWARF WINGED BURNING BUSH	<i>Euonymus alatus 'Compactus'</i>	60 cm	3 gal.	1.60 m o/c	D-3	Full form / Container grown
HyLW	9	LEMON WAVE HYDRANGEA	<i>Hydrangea macrophylla 'Lemon Waave'</i>	60 cm	3 gal.	1.5m o/c	D-3	Full form / Container grown
Rr	10	NEARLY WILD ROSE	<i>Rosa rugosa 'Nearly Wild'</i>	60 cm	3 gal.	0.90m o/c	D-3	Full form / Container grown
Wf	8	RED PRINCE WEIGELA	<i>Weigela florida 'Red Prince'</i>	60 cm	3 gal.	1.2m o/c	D-3	Full form / Container grown

PLANT LIST
REFER TO PLANTING NOTES AND DETAILS ON LP-3

ORNAMENTAL GRASSES

FgE	181	ELIJAH'S BLUE FESCUE	<i>Festuca glauca 'Elijah Blue'</i>	1 gal	pot	0.30 m o/c	n/a	Full form / Container grown
MsM	3	MALEPARTUS MAIDEN GRASS	<i>Miscanthus sinensis 'Malepartus'</i>	1 gal	pot	0.60 m o/c	n/a	Full form / Container grown

PERENNIALS

Heu	12	HOLLYWOOD CORAL BELLS	<i>Heuchera x 'Hollywood'</i>	1 gal	pot	0.40 m o/c	n/a	Full form / Container grown
Hos	10	PLAINTAIN LILY	<i>Hosta x (various cultivars)</i>	1 gal	pot	0.60 m o/c	n/a	Full form / Container grown
Pae	6	SINGLE PEONY	<i>Paeonia lactiflora 'Bowl of Beauty'</i>	1 gal	pot	0.90 m o/c	n/a	Full form / Container grown

STANDARD TREES

East	2	DWARF BURNING BUSH (standard)	<i>Euonymus alatus 'Compactus'</i>	125 cm stem	7 gal	As Per Drawing	P1314	Tree form / Container grown
Hyst	1	PEEGEE HYDRANGEA (standard)	<i>Hydrangea paniculata 'Grandiflora'</i>	150 cm stem	7 gal	As Per Drawing	D-3	Tree form / Container grown
Msst	2	TINA CRABAPPLE	<i>Malus sargentii 'Tina'</i>	150 cm stem	10 gal	As Per Drawing	D-3	Full form / Container grown
Pcst	1	PURPLE LEAF SAND CHERRY (standard)	<i>Prunus x cistena</i>	150 cm stem	7 gal	As Per Drawing	D-3	Tree form / Container grown
Rxst	1	NICOLAS ROSE (standard)	<i>Rosa x Nicolas</i>	120 cm stem	7 gal	As Per Drawing	D-3	Tree form / Container grown
Syst	2	MISS KIM LILAC (standard)	<i>Syringa patula 'Miss Kim'</i>	150 cm stem	7 gal	As Per Drawing	D-3	Tree form / Container grown
Vcst	1	KOREAN SPICE VIBURNUM (standard)	<i>Viburnum carlesii</i>	150 cm stem	7 gal	As Per Drawing	D-3	Tree form / Container grown

VINES

Au	30	ROCK CRESS	<i>Aubrieta 'Royal Blue'</i>	2 gal	pot	0.5 m o/c	n/a	'Royal' cultivar grows over the wall shade only, base of the wall
Hy	10	CLIMBING HYDRANGEA	<i>Hydrangea anomala subsp. petiolaris</i>	2 gal	pot	4.0 m o/c	n/a	shade only, base of the wall

BROADLEAF EVERGREENS

RhM	13	HAAGA RHODODENDRON	<i>Rhododendron x marjatta 'Haaga'</i>	50cm	3 gal.	1.30 m o/c	D-3	Full form / Container grown
-----	----	--------------------	--	------	--------	------------	-----	-----------------------------

LEGEND

- SUBJECT LANDS
- EXISTING TREES TO BE PRESERVED
- PRESERVATION AREA
- DECIDUOUS TREES (LP-2)
- CONIFERS (LP-2)
- SHRUBS (LP-2)
- PERENNIALS
- ORNAMENTAL GRASSES
- OVERHANGING VINES
- PLANT LABEL
- SCREEN PANELS (LP-3)
- GUARDRAIL (LP-5)
- ORNAMENTAL FENCE (LP-5)
- BENCH ON CONCRETE SLAB (LP-3)
- CONCRETE PAVING (LP-3)

BASE PLAN REVISED: October 2025

Client info:

CENTRAL CLEAR VIEW DEVELOPMENTS INC.

ACCEPTED BY: _____

DATE: _____

LANDSCAPE ARCHITECTS STAMP
nbtis@jdbllprogers.com

JDB ASSOCIATES LTD.

Urban Designers
Landscape Architects
Arborists

Tel: 705-722-6278
jdb@jdbassociates@progers.com
1046 Flos Road Four East, Phelpsston, ON, L0L 2K0

**Nicholas Apartment Building
Picton**

LANDSCAPE PLAN

SCALE: 1/400	DESIGNED BY: SJT	REVIEWED BY: NB
TOWN FILE No.	OUR FILE REF. # 35-23	LP-1

SITE CONDITIONS

- VERIFY ALL EXISTING SITE CONDITIONS AND REPORT ANY DISCREPANCIES BEFORE COMMENCING WORK.
 - THE CONTRACTOR SHALL VERIFY THE LOCATION OF ALL UTILITIES AND IS RESPONSIBLE FOR ANY DAMAGE TO SERVICES, EXISTING VEGETATION OR ANY OTHER FEATURES TO BE RETAINED.
 - FOR ALL AREAS OF DISTURBANCE: NATIVE TOPSOIL IS TO BE STRIPPED, STOCK PILED, LABORATORY TESTED AND REPLACED AS PER TOPSOIL REQUIREMENTS.
- PLANT MATERIAL REQUIREMENTS**
- PLANT MATERIAL LISTED IN THE PLANT SCHEDULE ARE MINIMUM SIZES +/- NURSERY GROWN AND UNIFORM SPECIMENS. NO SUBSTITUTIONS WILL BE PERMITTED WITHOUT WRITTEN APPROVAL FROM THE LANDSCAPE ARCHITECTS.
 - DECIDUOUS TREES SHALL HAVE A STRAIGHT CENTRAL LEADER AND WELL BRANCHED 1.5M ABOVE GRADE UNLESS OTHERWISE STATED.
 - CONIFEROUS TREES SHALL HAVE A STRAIGHT CENTRAL LEADER AND DENSELY BRANCHED TO WITHIN 0.3m OF THE GROUND.
 - ALL PLANTING MATERIAL AND OPERATIONS TO MEET OR EXCEED THE HORTICULTURAL STANDARDS OF THE CANADIAN NURSERY LANDSCAPE ASSOCIATION AND THE HORTICULTURAL TRADES ASSOCIATION. ALL PLANT MATERIAL TO BE NO.1 GRADE NURSERY STOCK. UNSATISFACTORY STOCK WILL BE REFUSED ON THE SITE.
 - SOD TO BE CANADA NO.1 NURSERY SOD, MEETING ONTARIO SOD GROWERS ASSOCIATION STANDARDS. ALL SOD AREAS TO RECEIVE 200MM DEPTH OF TOPSOIL UNLESS OTHERWISE INDICATED.

PLANTING NOTES

- LOCATIONS FOR PLANT MATERIAL AND PLANTING BEDS ARE TO BE MARKED OR STAKED OUT BY THE CONTRACTOR AND APPROVED BY THE LANDSCAPE ARCHITECT AND MUNICIPAL STAFF PRIOR TO INSTALLATION.
- ALL PLANT MATERIAL WHICH ARE SPECIFIED BY O.C. (ON CENTER SPACING) ARE TO BE PLANTED AS NOTED IN THE PLANT SCHEDULE.
- IN THE EVENT OF A DISCREPANCY BETWEEN THE PLANT LIST AND DRAWING, THE DRAWING WILL BE ASSUMED TO BE CORRECT.
- ALL MASS PLANTINGS OF SHRUBS SHALL BE IN CONTINUOUS BEDS AND MULCHED AS SPECIFIED.
- ALL TREE PITS SHALL INCLUDE TREATMENT WITH MICRORHIZAL FUNGI OF THE WALLS BEFORE PLANTING (2L OF "MIKE" OR SIMILAR PRODUCT SHALL BE USED FOR EACH 60MM CALIPER TREE)
- ALL TREES ARE TO BE STAKED OR GUY WIRED ACCORDING TO DETAILS PROVIDED. NO ACCESSIBLE OPEN HOLE TREE PITS SHALL BE PERMITTED OVERNIGHT.
- REMOVE BURLAP AND ROPE FROM THE TOP 1/3 OF ROOT BALLS.
- WATER AT TIME OF PLANTING AND WHENEVER DEEMED NECESSARY TO MAINTAIN THE TREES IN A HEALTHY CONDITION.
- ALL PLANT MATERIALS WHICH CAN NOT BE PLANTED IMMEDIATELY UPON ARRIVAL ON SITE SHALL BE PROPERLY HEeled IN OR WELL PROTECTED WITH SOIL OR SIMILAR MATERIALS TO PREVENT DRYING OUT AND SHALL BE KEPT MOIST UNTIL COMMENCEMENT OF PLANTING.
- NO ACCESSIBLE OPEN HOLE TREE PITS SHALL BE PERMITTED OVERNIGHT. ALL OPEN PITS SHALL BE ADEQUATELY PROTECTED BY BARRIERS OR FILLED IN WITH SOIL PRIOR TO THE END OF EACH PLANTING DAY.
- ALL NEW WORK TO BLEND NEATLY AND SMOOTHLY WITH EXISTING CONDITIONS.

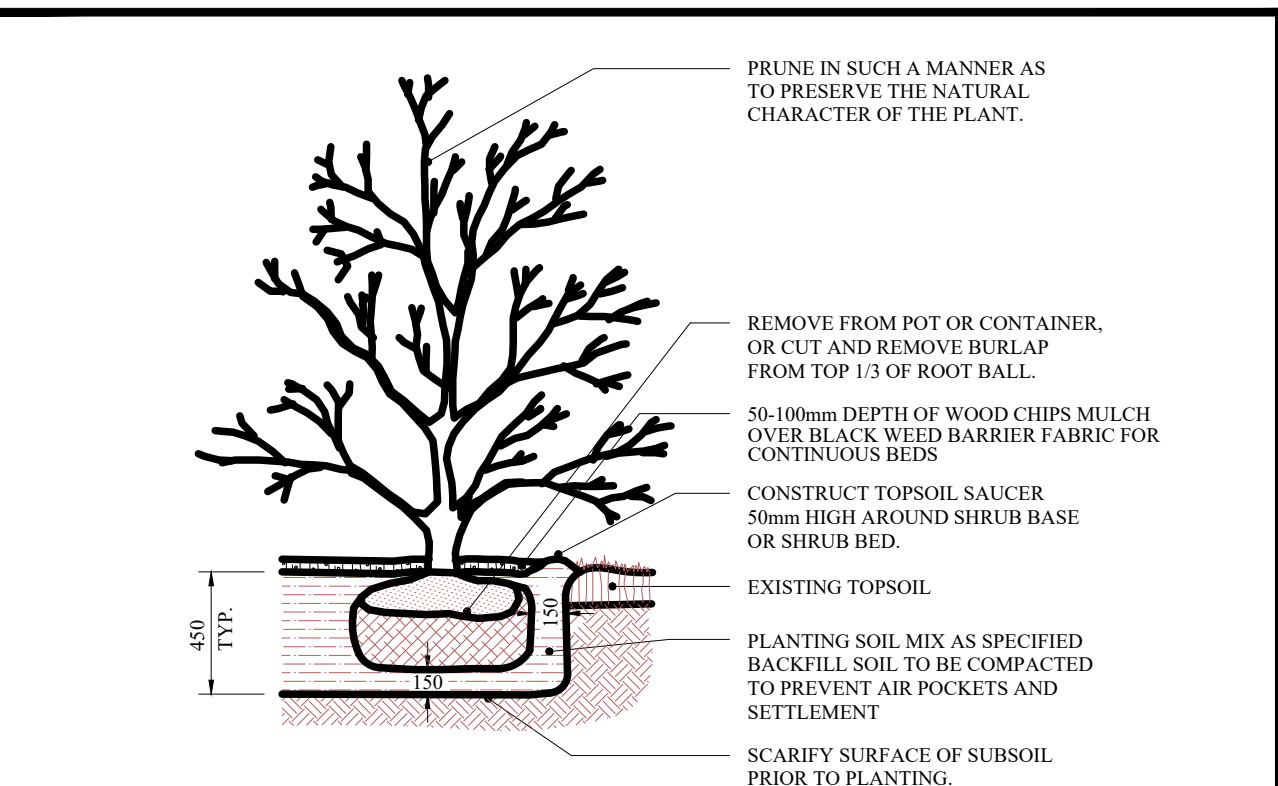
INSPECTION AND WARRANTY

- GIVE TIMELY NOTICE TO THE LANDSCAPE ARCHITECT FOR THE REQUIRED START UP SITE INSPECTION TO REVIEW SITE CONDITIONS AND SCHEDULE FOLLOW UP INSTALLATIONS.
- INSTALLATION OF PLANT MATERIAL PRIOR TO INSPECTION BY THE LANDSCAPE ARCHITECT WILL BE THE CONTRACTOR'S RESPONSIBILITY.
- THE LANDSCAPE ARCHITECT RESERVES THE RIGHT TO REJECT ANY PLANTS, WHETHER INSTALLED OR NOT, WHICH DO NOT CONFORM TO THE SPECIFICATIONS AND/OR SITE DRAWING. REMOVE ALL REJECTED PLANTS FROM THE SITE IMMEDIATELY. DO NOT REMOVE ANY LABELS FROM PLANTS UNTIL PLANTS HAVE BEEN INSPECTED AND APPROVED BY THE LANDSCAPE ARCHITECT.
- ALL PLANT MATERIAL AND WORKMANSHIP WILL BE INSPECTED AND IS UNDER WARRANTY FOR A MINIMUM OF TWO YEAR FROM DATE OF WRITTEN ACCEPTANCE. ALL PLANT MATERIAL MUST BE IN A HEALTHY, VIGOROUS GROWING CONDITION SATISFACTORY TO THE CONTRACT ADMINISTRATOR AT THE END OF THE WARRANTY PERIOD OR BE REPLACED AT THE CONTRACTORS EXPENSE.
- FINAL ACCEPTANCE OF THE PROJECT WILL BE CARRIED OUT UPON COMPLETION OF ALL WORK INCLUDED IN THE CONTRACT.

TOPSOIL REQUIREMENTS

- PROVIDE MINIMUM SOIL VOLUME PER TREE AT 0.45m DEPTH FOR STREET TREES (OR ABOVE UTILITIES) AND MAX. 0.9m IN OTHER AREAS:
 - 18 m³ FOR LARGE TREES
 - 12 m³ FOR SMALL TREES
- PREPARED SOIL MIXTURE FOR EACH TREE PITS AND SHRUBS SHALL CONSIST OF HIGH QUALITY SOIL:
 - SIX PARTS OF FERTILE LOAM SOIL (50-60% SAND, 20-40% SILT, 6-10% CLAY, 2-3% ORGANIC), WITH A pH OF 7.5+ OR LESS, FREE OF CLAY LUMPS, DEBRIS, TOXIC SUBSTANCES, STONES, WOODY MATERIAL, WEED SEEDS AND GRASS ROOTS
 - ONE PART COARSE PULVERIZED CANADIAN PEAT MOSS
 - ONE PART OF WELL-ROTTED FARM MANURE
- PREPARED SOIL MIXTURE FOR SOD AREAS SHALL CONSIST OF MIN. 20cm HIGH QUALITY SOIL:
 - SIX PARTS OF FERTILE LOAM SOIL (50-60% SAND, 20-40% SILT, 6-10% CLAY, 2-3% ORGANIC), WITH A pH OF 7.5+ OR LESS, FREE OF CLAY LUMPS, DEBRIS, TOXIC SUBSTANCES, STONES, WOODY MATERIAL, WEED SEEDS AND GRASS ROOTS

PLANTING NOTES

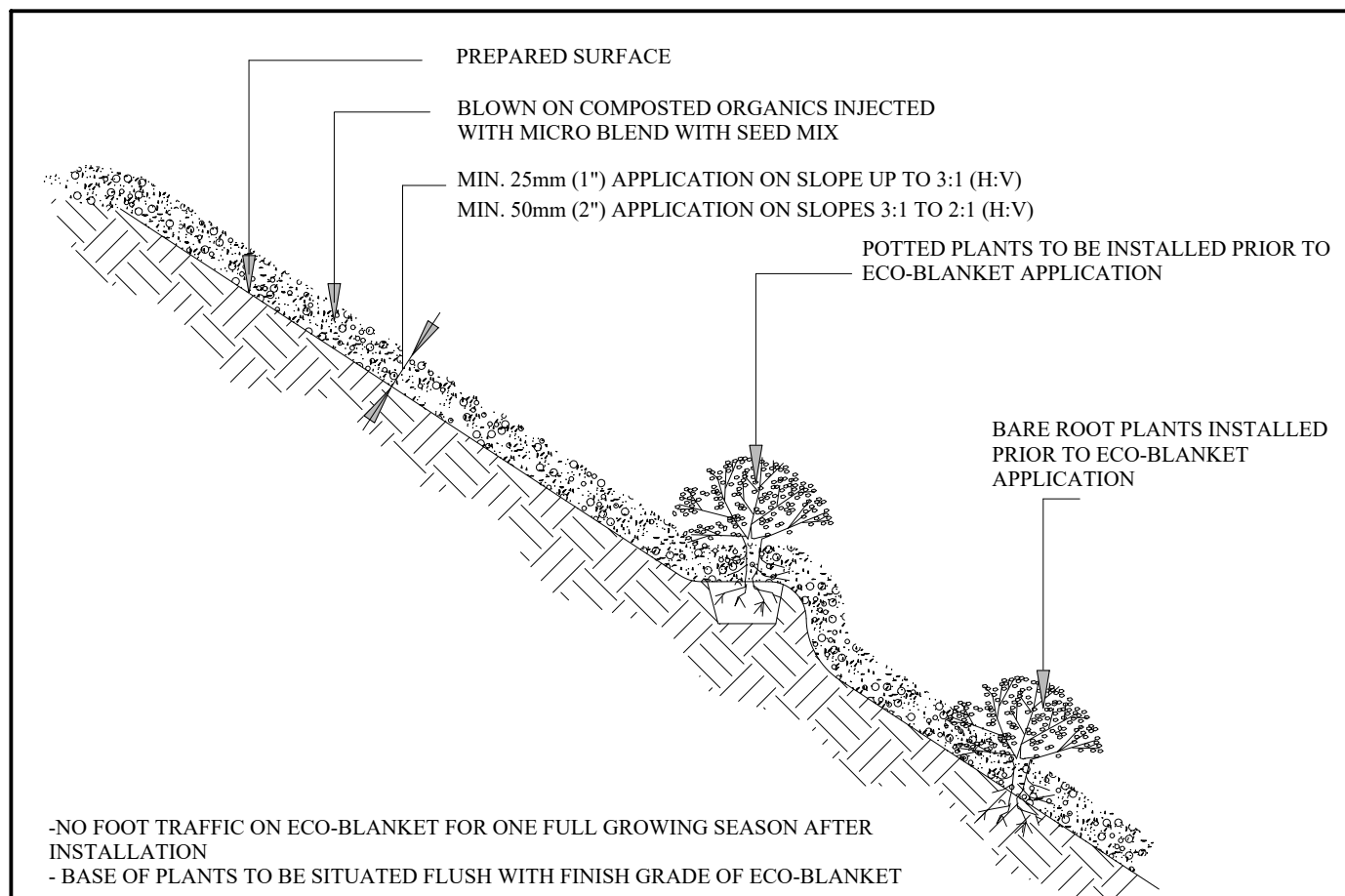


NOTES :

- PLANTING METHOD ILLUSTRATED SHALL APPLY EQUALLY TO BARE- ROOT AND BALLED STOCK.
- SET SHRUBS 50mm HIGHER THAN SURROUNDING GRADE TO ALLOW FOR SETTLEMENT.
- THE ABOVE DETAIL DOES NOT REPRESENT ANY PARTICULAR SPECIES.
- SHRUBS PLANTED IN GROUPS SHALL BE SET IN CONTINUOUS MULCHED BEDS w/ BLACK WEED BARRIER FABRIC
- ALL MEASUREMENTS ARE IN MILLIMETRES UNLESS OTHERWISE INDICATED.

SHRUB PLANTING DETAIL

D-3



-NO FOOT TRAFFIC ON ECO-BLANKET FOR ONE FULL GROWING SEASON AFTER INSTALLATION
-BASE OF PLANTS TO BE SITUATED FLUSH WITH FINISH GRADE OF ECO-BLANKET

1.0 Description:
This work shall consist of furnishing, constructing and maintaining an EcoBlanket to Rexius specifications. EcoBlanket is a ground cover (surface blanket) of the Rexius specified compost/mulch (Erosion Blend) combined with a special additive (Microblend) constructed with a pneumatic blower to control and reduce soil erosion. An EcoBlanket stabilizes the soil, prevents splash, sheet and rill erosion, and removes suspended soil particles and contaminants from water moving off the site and into adjacent waterways or storm water conveyance systems. I.1. This EcoBlanket must be applied by Landsource Organic Ltd., 100 Britannia Road East, Hornby, Ontario L0P 1E0, tollfree 1 877 548 8558 (toll free fax 1 877 548 8559) or equivalent certified EcoBlanket installer.
I.2. Materials must be applied using a pneumatic blower unit complete with a supplemental granular injection system capable of installing at least 15 cubic meters per hour.
I.3. Contractor must have at least 3 years of proven experience in successfully installing EcoBlankets/EM.

2.0 Material:
The EcoBlanket filtering material consists of the Rexius Erosion Blend of compost and mulch materials, according to the Rexius particle sizing specifications, in combination with the Rexius Microblend additive.
2.1. Particle size must meet exact specifications of the Rexius EcoBlanket material supplied by a certified supplier/installer.
2.2. The compost portion of EcoBlanket shall be derived from well-decomposed organic matter source produced by controlled aerobic (biological) decomposition that has been sanitized through the generation of heat and stabilized to the point that it is appropriate for this particular application. Compost material shall be processed through proper thermophilic composting, meeting the Canadian Council of Ministers of the Environment's (CCME) definition for a "process to further reduce pathogens" (PPRP). The compost portion shall meet the chemical, physical and biological properties (as outlined in the chart on reverse). These and all other required properties for the performance of the EcoBlanket are included in the Rexius EcoBlanket Manufacturer Guidelines followed by certified supplier/installers.
2.3. Rexius Microblend additive shall be injected into Erosion Blend material at time of EcoBlanket construction.
2.4. A proof of certification as an EcoBlanket supplier shall be submitted to the Landscape Architect for approval prior to installation. Test results for EcoBlanket performance shall be made available upon request.
2.5. Where seeding or planting is planned, Erosion Blend material must meet Rexius' minimum specification requirements for seeding purposes.

3.0 Construction:
3.1. The EcoBlanket shall be placed as shown on the plans or as directed by the Landscape Architect.
3.2. On areas with slopes 3:1 to 2:1 (H:V) the EcoBlanket shall be uniformly applied directly at the soil surface with a pneumatic blower as specified by Rexius. EcoBlanket shall be applied at a depth of 50mm minimum and approximately 90 cm over the top of the slope, or overlaid it into existing vegetation. On areas with slopes up to 3:1(H:V) the EcoBlanket shall be applied at a depth of 25mm minimum. In extreme conditions and where specified by the Engineer/Landscape Architect, EcoBlanks shall be added and constructed at the top of the slope in parallel intervals down the profile of the slope (6 metres to 9 metres apart) if necessary. (The Engineer/Landscape Architect shall specify berm requirements)
3.3. Rexius Microblend shall be applied/injected at a minimum rate of 615 kgs. per hectare (or as specified by Rexius), to be confirmed by inspector/project manager.
3.4. EcoBlanket application depth may be modified based on specific site (e.g., soil characteristics, existing vegetation) and climatic conditions, as well as particular project related requirements. The severity of slope grade, as well as slope length will also influence the addition of EcoBerms and number of EcoBerm placements in combination with the EcoBlanket.
3.5. If temporary or long-term vegetation is required, Erosion Blend material may be injected with seed during application. The Engineer/Landscape Architect shall specify seed requirements and the compost/mulch component shall abide by the minimum standards set by Rexius for seeding.
3.6. Where vegetation is to be established, slightly roughen (scarify) slopes and remove large clods, rocks, stumps, roots larger than 50 mm in diameter and debris on slopes. This soil preparation step may be eliminated where approved by the Landscape Architect/Designer, or where seeding or planting is not planned. Where practical, track (compact) perpendicular to contours on the slope using a bulldozer before applying EcoBlanket injected with seed.
3.7. Do not use EcoBlankets in areas of concentrated flow (i.e. ditches, streams, etc.)
3.8. Unless otherwise allowed by Landscape Architect, seeding shall be performed within the local region's seeding deadlines.

4.0 Maintenance:
The Contractor shall maintain the EcoBlanket in a functional condition at all times. Contractor shall make periodic inspections of the EcoBlanket for effectiveness and shall immediately correct all deficiencies. Where deficiencies exist, additional EcoBlanket material shall be installed immediately to required depth.

5.0 Method of Measurement:
EcoBlanket shall be measured by the square metre, complete in place.

6.0 Performance:
6.1. Place EcoBlankets on denuded areas immediately or as directed by Landscape Architect. EcoBerms and/or temporary or permanent vegetation shall be applied/established when necessary, along with other appropriate structural measures and controls, for additional erosion and sediment control.
6.2. The work specified in this Section consists of designing, providing, and maintaining erosion and sedimentation controls as necessary. All existing and foreseeable future conditions that affect the work inside and outside the site limits must be acknowledged as the Contractor's responsibility.
6.3. Contractor is responsible for providing effective sediment control measures based on performance. Contractor may, with approval from the Landscape Architect, work outside the minimum construction requirements to establish a working erosion control system.

Parameters: 1.4 Reported as (units of measure) EcoBlanket to be Vegetated EcoBlanket to be left Un-vegetated
PH2 pH units 5.0 - 8.5 N/A
Soluble Salt Concentration² (electrical conductivity) ds/m (mmhos/cm) Maximum 5 N/A
Stability³ Carbon Dioxide Evolution Rate mg CO₂-C per g OM per day < 8 N/A
Physical Contaminants (man-made inerts) % dry weight basis < 1 < 1

- Recommended test methodologies are provided in Test Methods for the Examination of Composting and Compost (SCC through BNO)
- Each specific plant species requires a specific pH range. Each plant also has a salinity tolerance rating, and maximum tolerable quantities are known. When specifying the establishment of any plant or turf species, it is important to understand their pH and soluble salt requirements, and how they relate to the compost in use.
- Stability/Maturity rating is an area of compost science that is still evolving, and as such, other various test methods could be considered. Also, never base compost quality conclusions on the result of a single stability/maturity test.
- Landscape Architect may modify the allowable compost specification ranges based on specific field conditions and plant requirements.

ECOBANKET SPECIFICATIONS AND DETAIL

DETAIL ADAPTED FROM LANDSOURCE ORGANIX EcoBlanket (tel.:1-877-548-8558)

UPLAND PLANTING ZONE

NO-MOW ZONE (INCLUDING ACCESS ROAD) APPROXIMATELY 2,867 sqm (+/-10%) (+/- MEASUREMENTS TO BE TAKEN ON SITE)

NATIVE UPLAND MIXTURE

- 2% NEW ENGLAND ASTER (*Aster novae-angliae*)
- 12% BLACK EYED SUSAN (*Rudbeckia hirta*)
- 20% SAND DROPSIED (*Sporobolus crytandrus*)
- 20% CANADA WILD RYE (*Elymus canadensis*)
- 4% CANADA GOLDEN ROD (*Solidago canadensis*)
- 5% COMMON MILKWEED (*Asclepias syriaca*)
- 1% WILD BERGAMONTE (*Monarda fistulosa*)
- 1% SMOOTH BLUE ASTER (*Aster laevis*)
- 15% LITTLE BLUE STEM (*Andropogon scoparius*)
- 20% INDIAGRASS (*Sorghastrum nutans*)

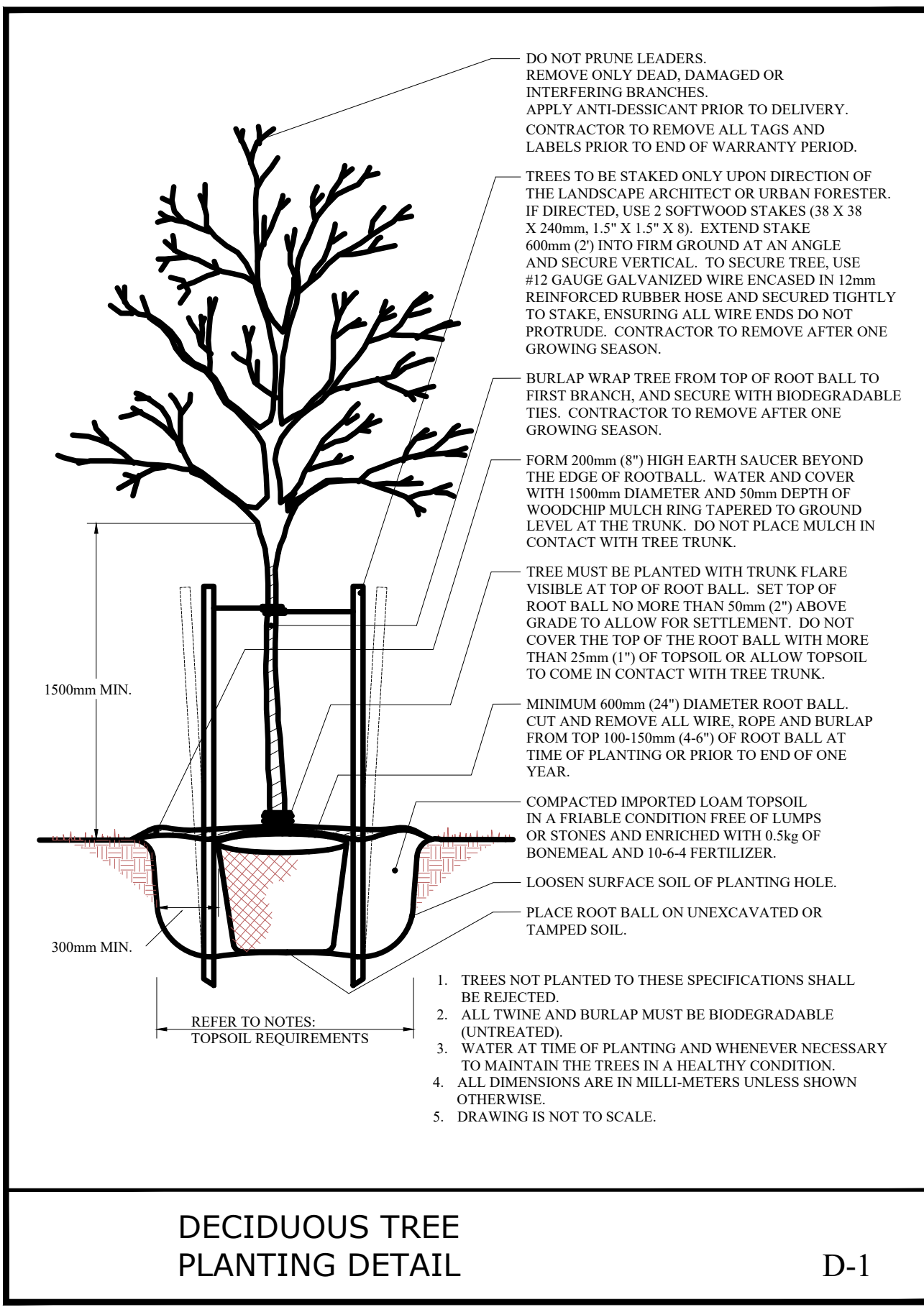
SEEDING RATE - 30kg PER HECTARE SUPPLIED BY - OSC SEEDS 1-519-866-0557 ANNUAL RYE NURSE CROP TO BE APPLIED AT TIME OF NATIVE UPLAND PLANTING MIXTURE AT A RATE OF 12kg PER HECTARE. REFER TO TERRASEEDING NOTES AND MULCH APPLICATION SPECIFICATIONS IN THIS BOX FOR FURTHER DETAILS.
TERRASEEDING APPLICATION SPECIFICATIONS

ECOBANKET OR TERRASEEDING TACTIFER / FLEXIGUARD HYDROMULCH SHALL BE APPLIED AS PER MANUFACTURER SPECIFICATIONS. SEE NOTES ON THIS PAGE.

TOP SOIL:

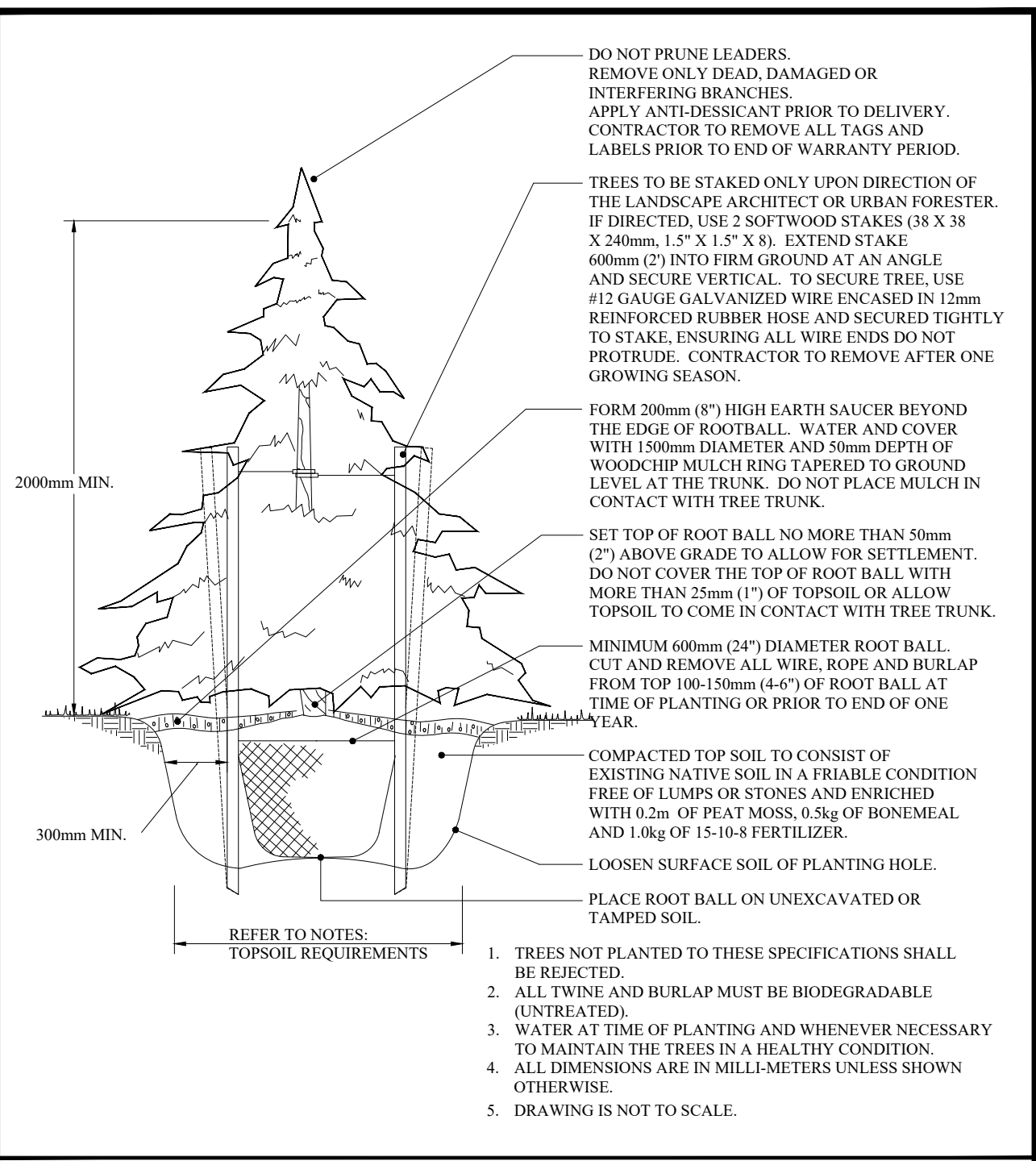
TOPSOIL SHALL BE PROVIDED TO A MINIMUM DEPTH OF 0.45m FOR TERRESTRIAL AREAS EXCEPT THE ACCESS ROAD BASE (5cm) AND MINIMUM 0.35m FOR TEMPORARY UNDERWATER AREAS.
TOPSOIL QUALITY SHALL BE AS PER OPSS 570. IT SHALL BE TESTED BY AN INDEPENDENT LABORATORY PRIOR TO INSTALLATION.

SEEDING AND TOP SOIL NOTES



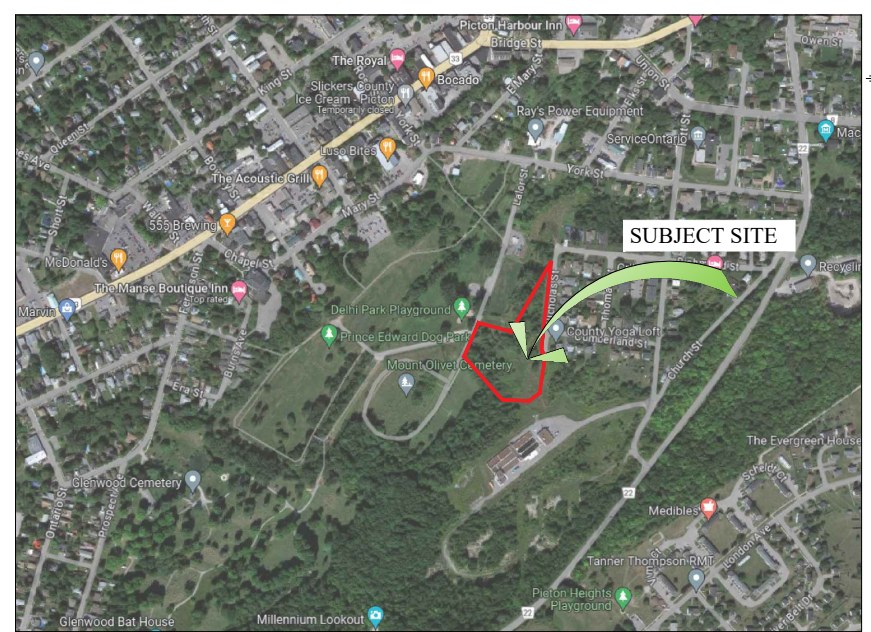
DECIDUOUS TREE PLANTING DETAIL

D-1



CONIFEROUS TREE PLANTING DETAIL

D-2



KEY MAP

N.T.S.

GENERAL NOTES

CONTRACTOR IS RESPONSIBLE FOR ALL LOCATES INCLUDING ALL UNDERGROUND SERVICES PRIOR TO ANY EXCAVATION OR INSTALLATIONS. THE CONTRACTOR IS REQUIRED TO NOTIFY THE VARIOUS UTILITY COMPANIES 48 HOURS PRIOR TO THE COMMENCEMENT OF ANY WORK.

ANY ACCOMPANYING DOCUMENTATION RELATING TO THE LANDSCAPE PLAN AND/OR PRESERVATION PLAN SUCH AS TENDER DOCUMENTS AND CHANGE NOTICES ARE TO BE ENDORSED BY J.D.B. ASSOCIATES LIMITED PRIOR TO THE BEGINNING OF ANY SITE WORKS. IN THE EVENT THAT A DISCREPANCY THE DRAWING SHALL BE ASSUMED CORRECT.

IT IS THE RESPONSIBILITY OF THE PERSON OR PERSONS RESPONSIBLE FOR THE CONSTRUCTED WORKS TO NOTIFY THE LANDSCAPE ARCHITECT WHEN PREPARED FOR ANY REQUIRED INSPECTIONS AND SIGN OFFS.

SCHEDULED MEETINGS SHALL TAKE PLACE AT THE CLOSEST MUTUALLY CONVENIENT TIME.

No.	REVISION	DATE	APRVD.
1.	ZBA AND SPA SUBMISSION	June 7, 2024	ST
2.	ZBA AND SPA SUBMISSION	November 24, 2023	ST
3.	ZBA AND SPA SUBMISSION	May 28, 2026	ST

ALL DRAWINGS AND SPECIFICATIONS ARE INSTRUMENTS OF SERVICE AND ARE THE PROPERTY OF JDB ASSOCIATES LIMITED. DRAWINGS ARE NOT TO BE MODIFIED AND/OR REPRODUCED WITHOUT THE WRITTEN CONSENT OF JDB ASSOCIATES LIMITED. REPRODUCTION OF DRAWINGS IN ANY FORM WITHOUT THE CONSENT OF JDB ASSOCIATES LIMITED VOIDS THE DRAWING AT WHICH TIME JDB ASSOCIATES LIMITED ACCEPTS NO LIABILITY FOR THE DRAWING CONTENT OR WORKS RESULTING FROM SAID REPRODUCTION. DRAWINGS MAY BE REPRODUCED BY MUNICIPAL AND GOVERNMENT AGENCIES RESPONSIBLE FOR APPROVALS FOR THEIR OWN USE. JDB ASSOCIATES RESERVES THE RIGHT TO WITHDRAW ANY DRAWINGS (FROM GOVERNMENT OR MUNICIPAL AGENCIES WHETHER APPROVED OR NOT) IN THE EVENT THAT ACCOUNTS ARE NOT SETTLED OR REMAIN OUTSTANDING.

IT IS THE RESPONSIBILITY OF THE CONTRACTOR TO VERIFY ALL DIMENSIONS ON THE SITE AND REPORT ANY DISCREPANCIES OR VARIATIONS FROM THE SUPPLIED INFORMATION TO THE LANDSCAPE ARCHITECT WITH THE PROJECT. JDB ASSOCIATES LIMITED IS NOT RESPONSIBLE FOR THE ACCURACY OF SURVEY, ARCHITECTURAL, MECHANICAL, ENGINEERING OR ELECTRICAL INFORMATION SHOWN ON THE DRAWING. FOR FURTHER INFORMATION REFER TO APPROPRIATE SURVEY, ARCHITECTURAL, MECHANICAL, ENGINEERING OR ELECTRICAL DRAWINGS PRIOR TO PROCEEDING WITH ANY WORKS.

THIS DRAWING IS NOT TO BE SCALE.

ACCEPTED BY:

DATE

BASE PLAN REVISED: October 2025

Client info:

CENTRAL CLEAR VIEW DEVELOPMENTS INC.

LANDSCAPE ARCHITECTS STAMP

Tel: 705-623-8726

nblajsbell@rogers.com

JDB ASSOCIATES LTD.

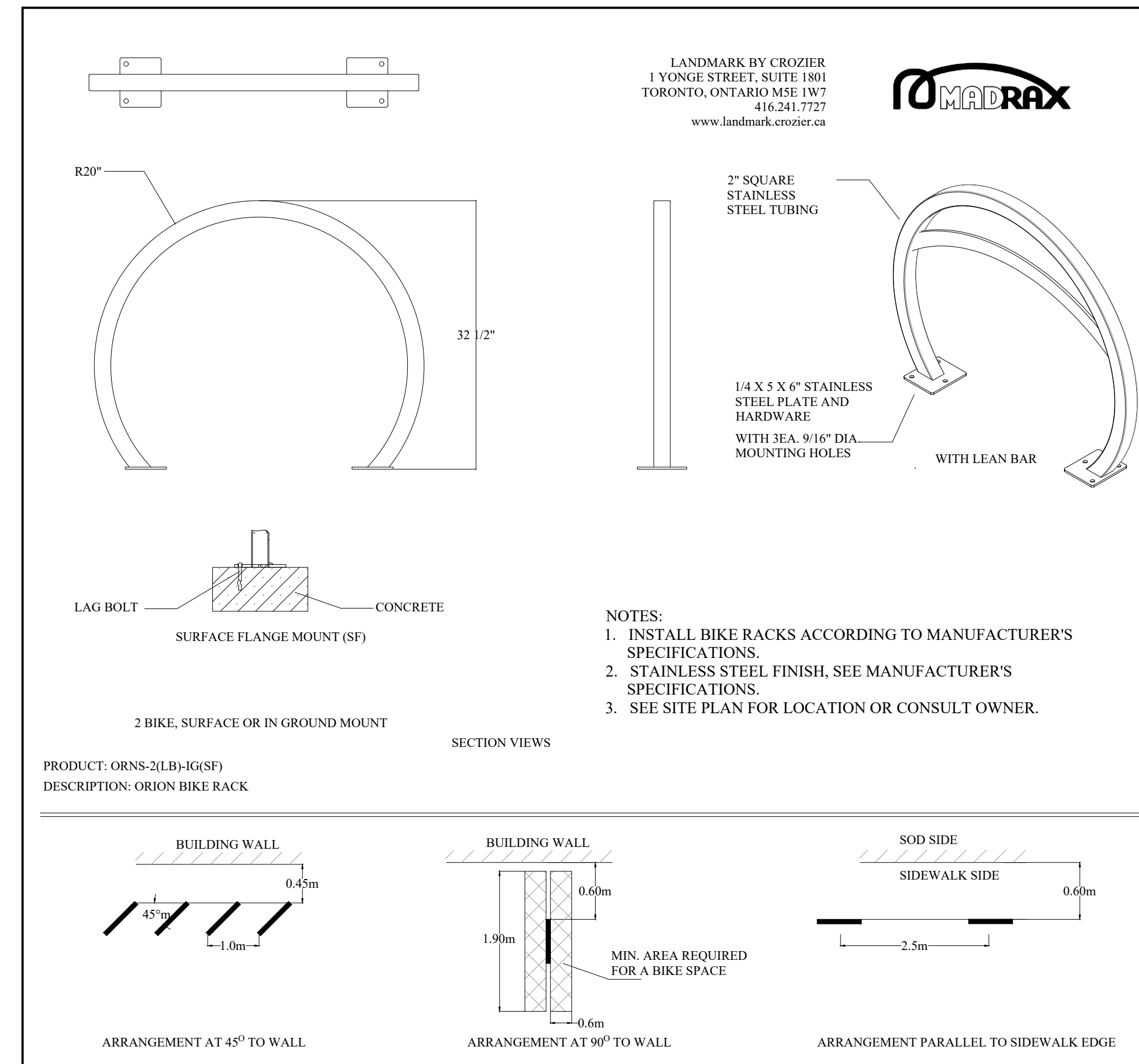
Urban Designers
Landscape Architects
Arborists

Tel: 705-722-6278
jdb@associates@rogers.com
1046 Flos Road Four East, Phelpsston, ON, L0L 2K0

**Nicholas Apartment Building
Picton**

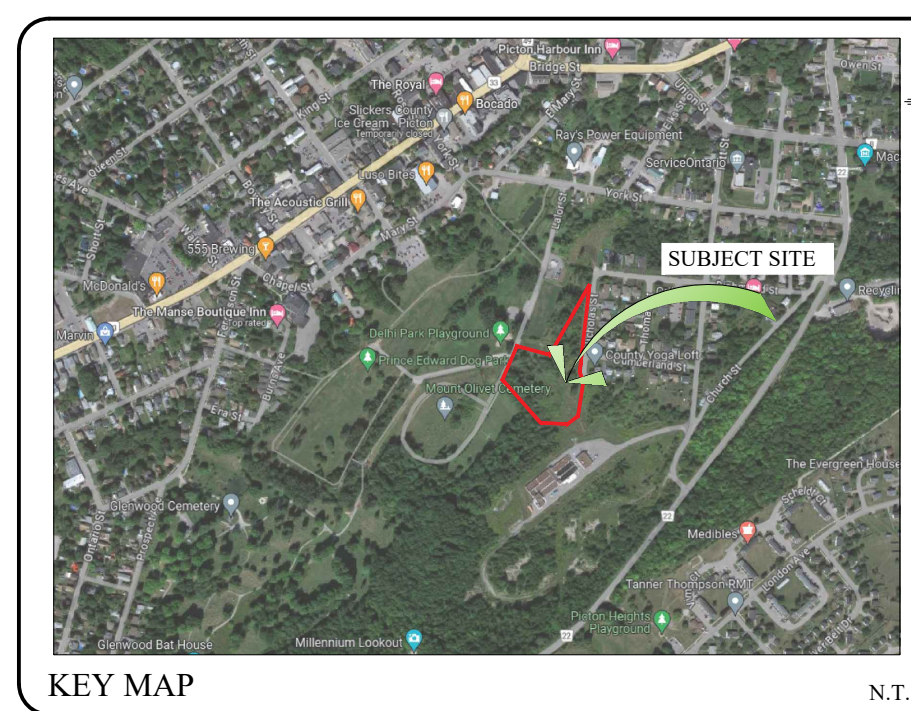
LANDSCAPE PLANTING DETAILS

SCALE: NTS	DESIGNED BY: ST	REVIEWED BY: NB
TOWN FILE No.	OUR FILE REF. # 35-23	LP-2



BIKE RACK DETAIL

N.T.S.



KEY MAP N.T.S.

GENERAL NOTES

CONTRACTOR IS RESPONSIBLE FOR ALL LOCATES INCLUDING ALL UNDERGROUND SERVICES PRIOR TO ANY EXCAVATION OR INSTALLATIONS. THE CONTRACTOR IS REQUIRED TO NOTIFY THE VARIOUS UTILITY COMPANIES 48 HOURS PRIOR TO THE COMMENCEMENT OF ANY WORK.

ANY ACCOMPANYING DOCUMENTATION RELATING TO THE LANDSCAPE PLAN AND/OR PRESERVATION PLAN SUCH AS TENDER DOCUMENTS AND CHANGE NOTICES ARE TO BE ENDORSED BY J.D.B. ASSOCIATES LIMITED PRIOR TO THE BEGINNING OF ANY SITE WORKS. IN THE EVENT THAT A DISCREPANCY THE DRAWING SHALL BE ASSUMED CORRECT.

IT IS THE RESPONSIBILITY OF THE PERSON OR PERSONS RESPONSIBLE FOR THE CONSTRUCTED WORKS TO NOTIFY THE LANDSCAPE ARCHITECT WHEN PREPARED FOR ANY REQUIRED INSPECTIONS AND SIGN OFFS.

SCHEDULED MEETINGS SHALL TAKE PLACE AT THE CLOSEST MUTUALLY CONVENIENT TIME.

No.	REVISION	DATE	APRVD.
1.	ZBA AND SPA SUBMISSION	June 7, 2024	ST
2.	ZBA AND SPA SUBMISSION	November 24, 2023	ST
3.	ZBA AND SPA SUBMISSION	May 28, 2020	ST

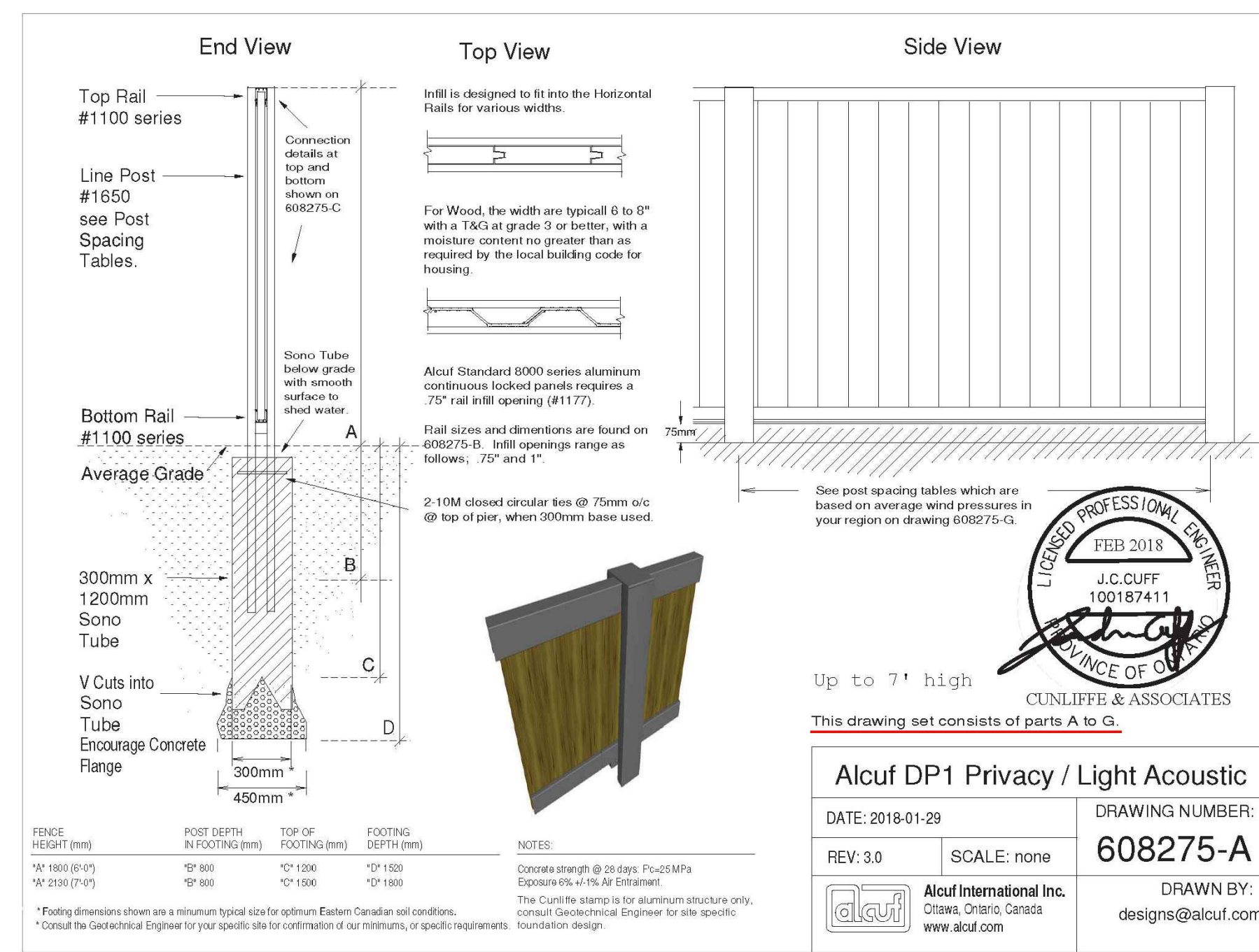
ALL DRAWINGS AND SPECIFICATIONS ARE INSTRUMENTS OF SERVICE AND ARE THE PROPERTY OF JDB ASSOCIATES LIMITED. DRAWINGS ARE NOT TO BE MODIFIED AND/OR REPRODUCED WITHOUT THE WRITTEN CONSENT OF JDB ASSOCIATES LIMITED. REPRODUCTION OF DRAWINGS IN ANY FORM WITHOUT THE CONSENT OF JDB ASSOCIATES LIMITED VOIDS THE DRAWING AT WHICH TIME JDB ASSOCIATES LIMITED ACCEPTS NO LIABILITY FOR THE DRAWING CONTENT OR WORKS RESULTING FROM SAID REPRODUCTION. DRAWINGS MAY BE REPRODUCED BY MUNICIPAL AND GOVERNMENT AGENCIES RESPONSIBLE FOR APPROVALS FOR THEIR OWN USE. JDB ASSOCIATES RESERVES THE RIGHT TO WITHDRAW ANY DRAWING(S) FROM GOVERNMENT OR MUNICIPAL AGENCIES WHETHER APPROVED OR NOT IN THE EVENT THAT ACCOUNTS ARE NOT SETTLED OR REMAIN OUTSTANDING.

IT IS THE RESPONSIBILITY OF THE CONTRACTOR TO VERIFY ALL DIMENSIONS ON THE SITE AND REPORT ANY DISCREPANCIES OR VARIATIONS FROM THE SUPPLIED INFORMATION TO THE LANDSCAPE ARCHITECT WITH THE PROJECT. JDB ASSOCIATES LIMITED IS NOT RESPONSIBLE FOR THE ACCURACY OF SURVEY, ARCHITECTURAL, MECHANICAL, ENGINEERING OR ELECTRICAL INFORMATION SHOWN ON THE DRAWING. FOR FURTHER INFORMATION REFER TO APPROPRIATE SURVEY, ARCHITECTURAL, MECHANICAL, ENGINEERING OR ELECTRICAL DRAWINGS PRIOR TO PROCEEDING WITH ANY WORKS.

THIS DRAWING IS NOT TO BE SCALED.

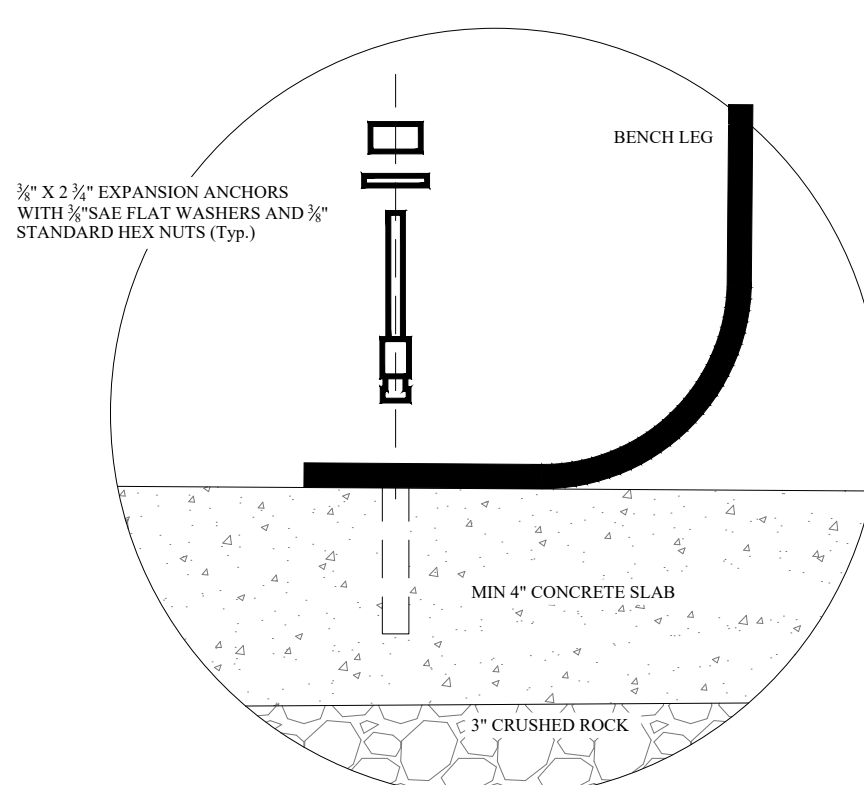
NOTE: ALL FENCE BOARDS TO BE WESTERN RED CEDAR

SUBSTITUTIONS TO BE APPROVED BY THE LANDSCAPE ARCHITECT PRIOR TO INSTALLATION



Alcuf DP1 Privacy / Light Acoustic
 DATE: 2018-01-29
 REV: 3.0
 SCALE: none
 DRAWING NUMBER: 608275-A
 DRAWN BY: designs@alcuf.com

1.8m HT. SCREEN PANELS DETAIL - Typ. ALCUF (ALUMINUM POSTS AND RAILS)

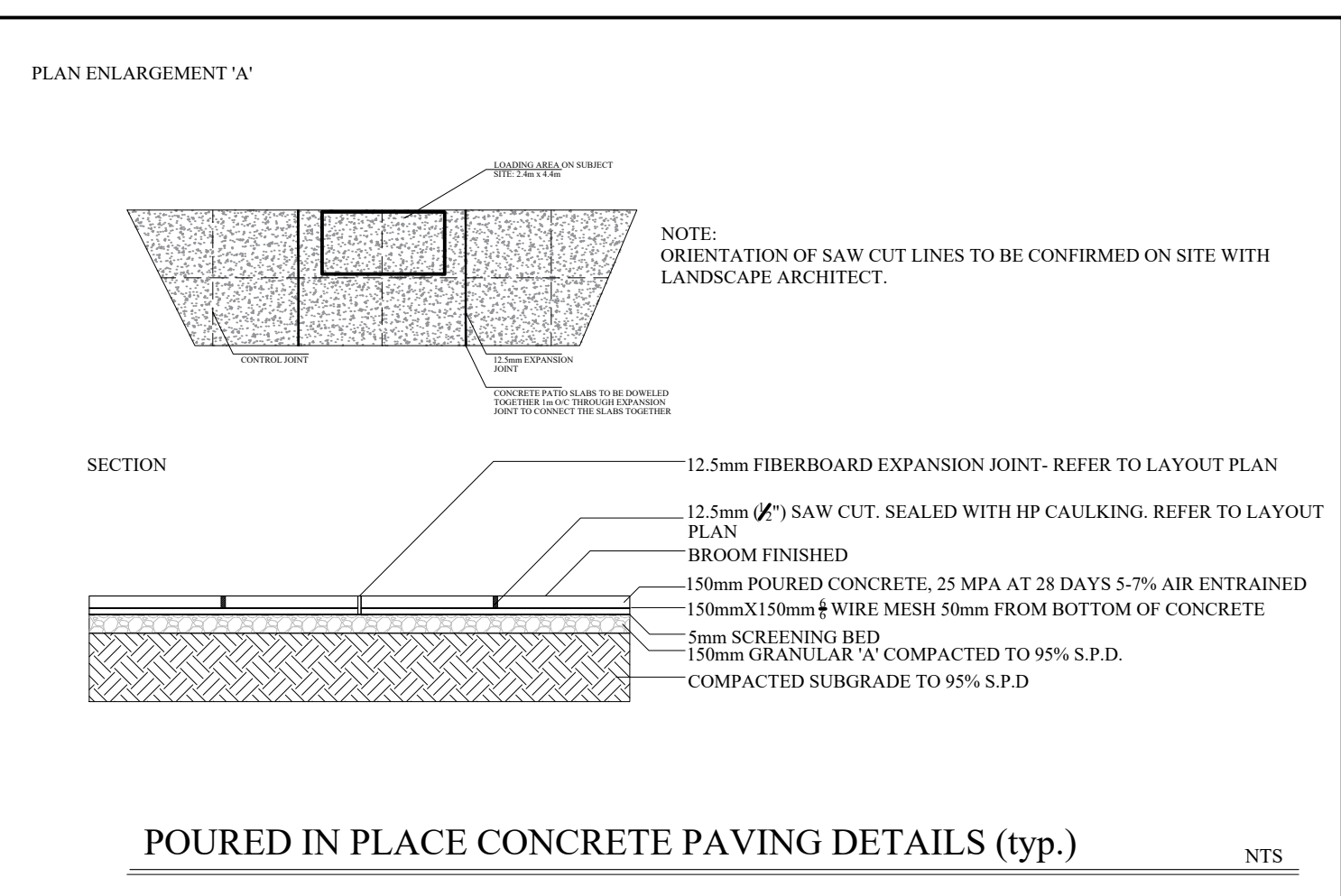


NOTE: ALL SITE FURNITURE TO BE HORIZONTALLY INSTALLED ON CONCRETE PAD

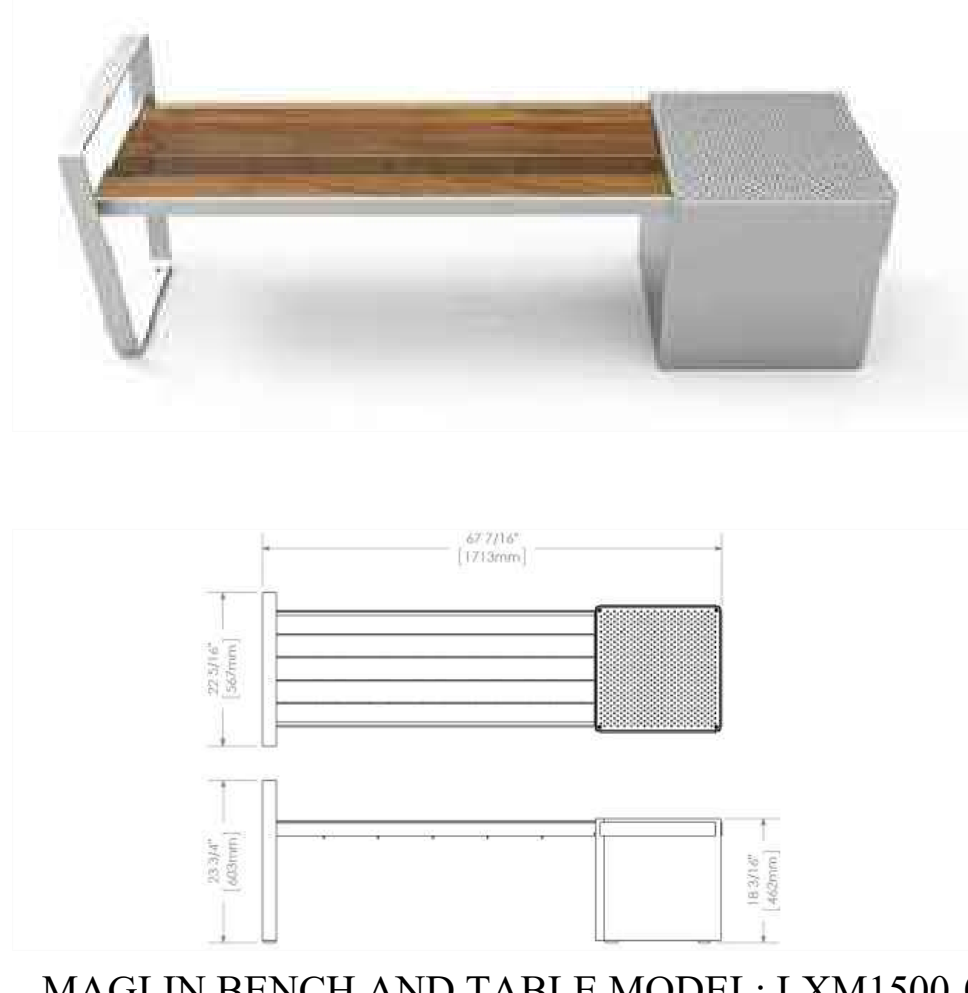
BENCH INSTALLATION ON CONCRETE PAD: The MLB park benches are delivered pre-assembled. Holes (0.5") are provided in each foot for securing to base into concrete with bolts.



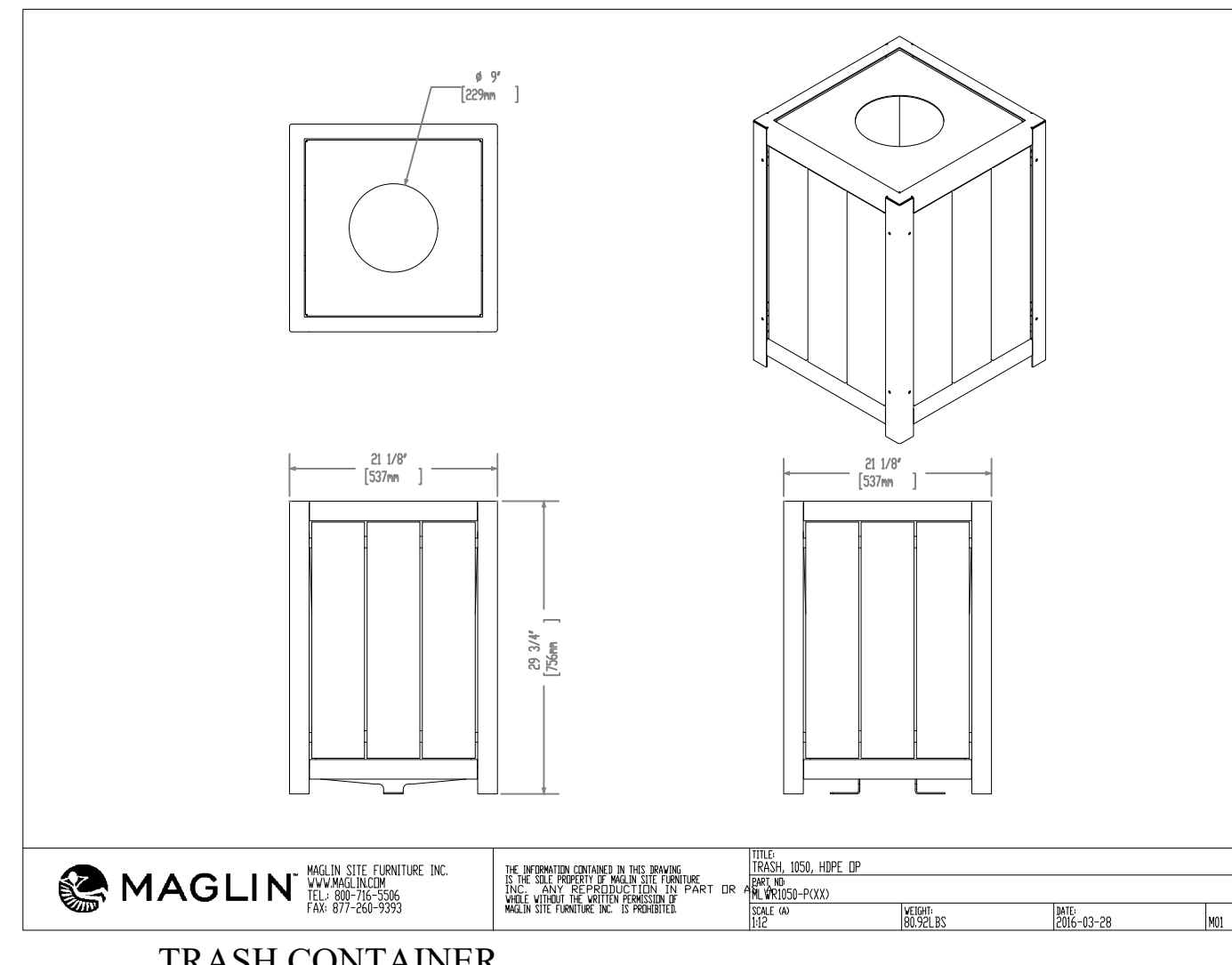
1050 Planters



POURED IN PLACE CONCRETE PAVING DETAILS (typ.) N.T.S.



MAGLIN BENCH AND TABLE MODEL: LXM1500-00037



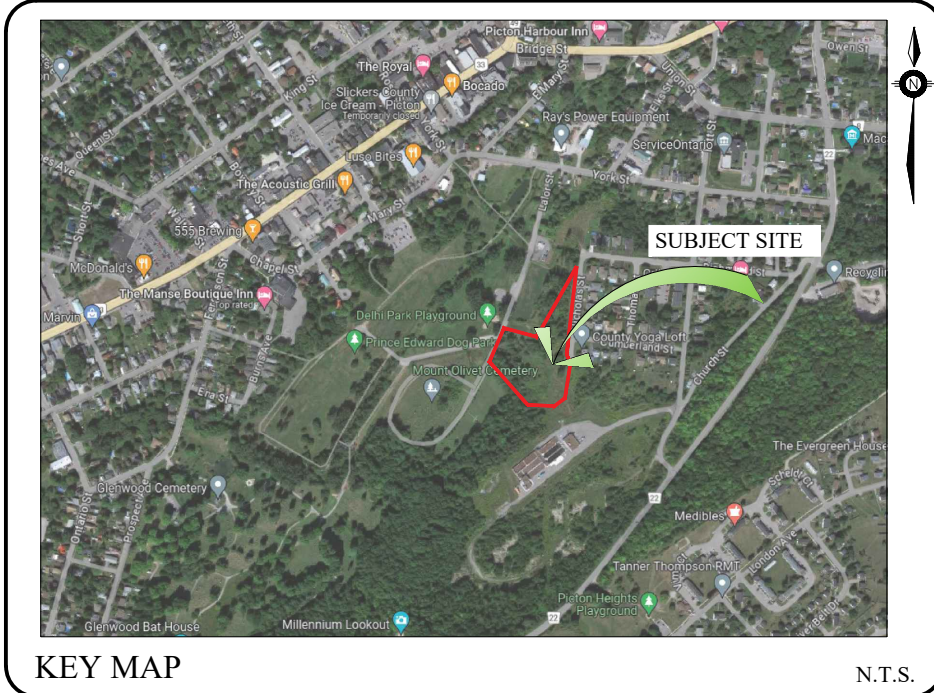
TRASH CONTAINER

BASE PLAN REVISED: October 2025
 Client info:
 CENTRAL CLEAR VIEW DEVELOPMENTS INC.

ACCEPTED BY:
 DATE: _____
 LANDSCAPE ARCHITECTS STAMP
 Tel: 705-623-8726
 nb@jdbell@rogers.com

JDB ASSOCIATES LTD.
 Urban Designers
 Landscape Architects
 Arborists
 Tel: 705-722-6278
 jdb@jdbassociates@rogers.com
 1046 Flos Road Four East, Phepston, ON, L0L 2K0

Nicholas Apartment Building
 Picton
 FENCING SITE FURNITURE DETAILS
 SCALE: N.T.S.
 TOWN FILE No. _____
 DESIGNED BY: ST
 OUR FILE REF. # 35-23
 REVIEWED BY: NB
 LP-3



KEY MAP N.T.S.

GENERAL NOTES

CONTRACTOR IS RESPONSIBLE FOR ALL LOCATES INCLUDING ALL UNDERGROUND SERVICES PRIOR TO ANY EXCAVATION OR INSTALLATIONS. THE CONTRACTOR IS REQUIRED TO NOTIFY THE VARIOUS UTILITY COMPANIES 48 HOURS PRIOR TO THE COMMENCEMENT OF ANY WORK.

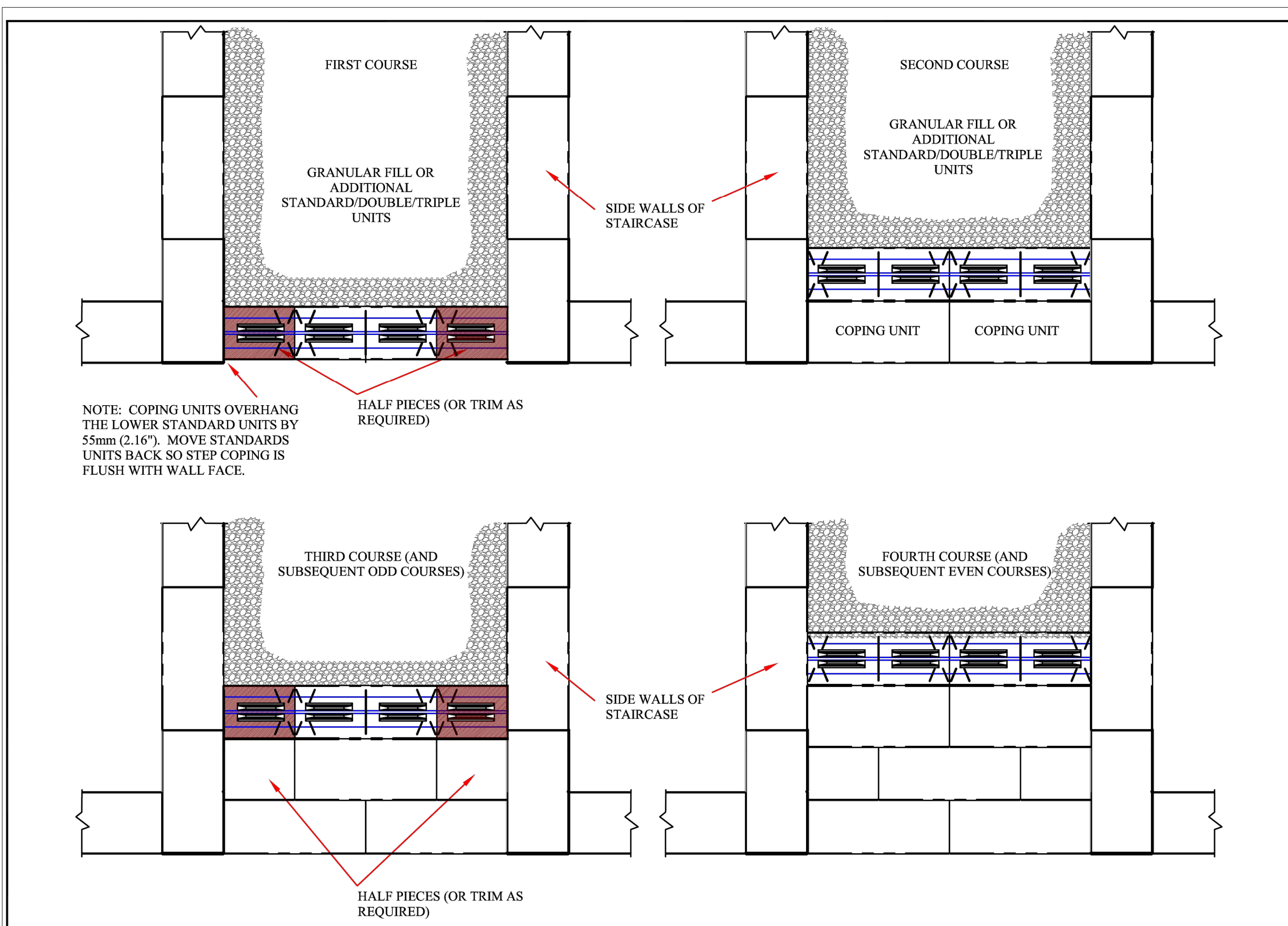
ANY ACCOMPANYING DOCUMENTATION RELATING TO THE LANDSCAPE PLAN AND/OR PRESERVATION PLAN SUCH AS TENDER DOCUMENTS AND CHANGE NOTICES ARE TO BE ENDORSED BY J.D.B. ASSOCIATES LIMITED PRIOR TO THE BEGINNING OF ANY SITE WORKS. IN THE EVENT THAT A DISCREPANCY THE DRAWING SHALL BE ASSUMED CORRECT.

IT IS THE RESPONSIBILITY OF THE PERSON OR PERSONS RESPONSIBLE FOR THE CONSTRUCTED WORKS TO NOTIFY THE LANDSCAPE ARCHITECT WHEN PREPARED FOR ANY REQUIRED INSPECTIONS AND SIGN OFFS.

SCHEDULED MEETINGS SHALL TAKE PLACE AT THE CLOSEST MUTUALLY CONVENIENT TIME.

No.	REVISION	DATE	APRVD.
1.	ZBA AND SPA SUBMISSION	June 7, 2024	SIT
2.	ZBA AND SPA SUBMISSION	November 24, 2025	SIT
3.	ZBA AND SPA SUBMISSION	May 28, 2026	SIT

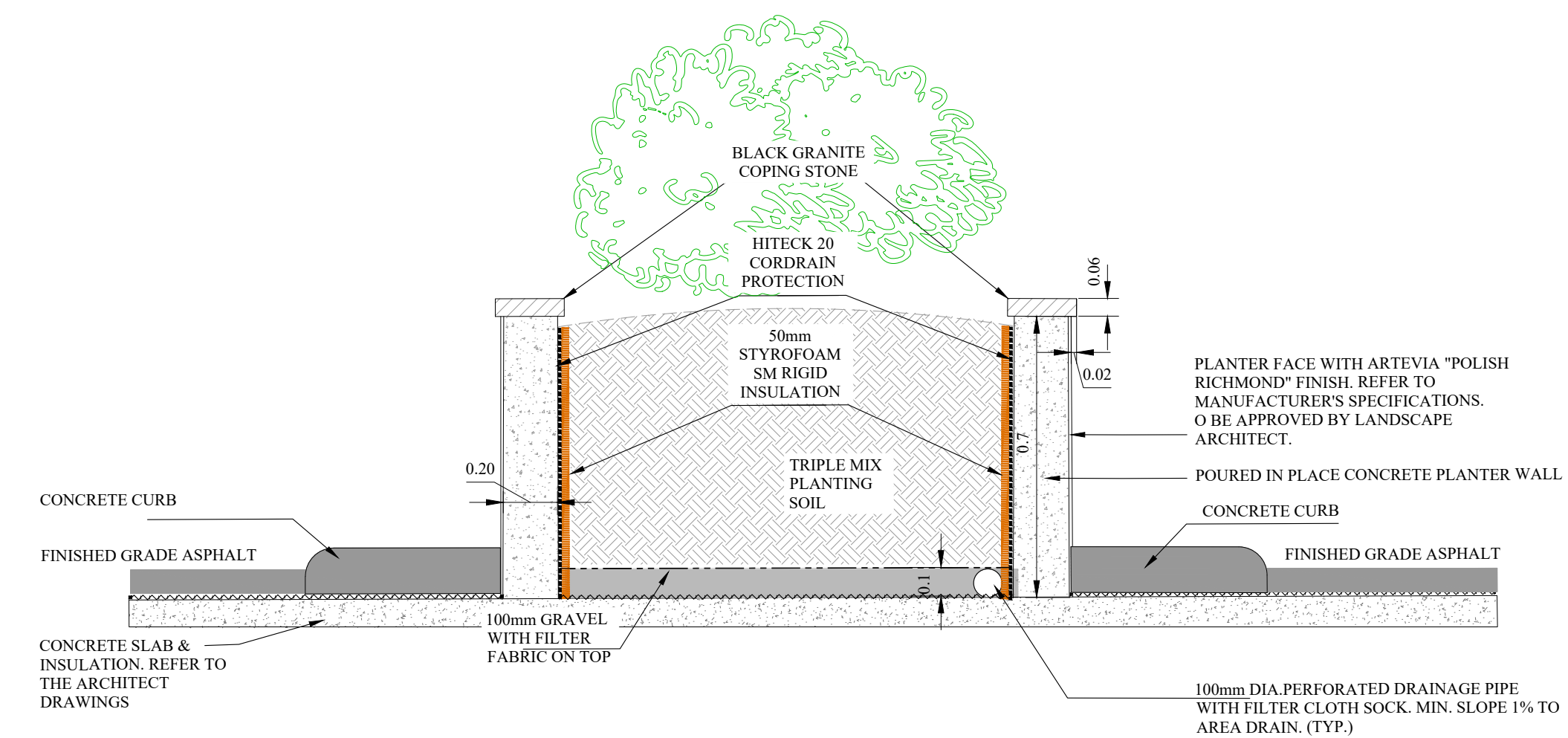
SHOP DRAWINGS TO BE PROVIDED FOR APPROVAL TO THE LANDSCAPE ARCHITECT FOR ALL DETAILS, PRIOR TO CONSTRUCTION



This graphic represents a preliminary, non site-specific design. If used for construction, a registered professional engineer must be retained to review & approve the design, confirm site conditions, and inspect construction.

Proterra™ Retaining Wall System Staircase Construction (Inset)

SHOP DRAWINGS TO BE PROVIDED FOR APPROVAL TO THE LANDSCAPE ARCHITECT PRIOR TO CONSTRUCTION



PLANTER CONCEPT DETAIL

ALL DRAWINGS AND SPECIFICATIONS ARE INSTRUMENTS OF SERVICE AND ARE THE PROPERTY OF JDB ASSOCIATES LIMITED. DRAWINGS ARE NOT TO BE MODIFIED AND/OR REPRODUCED WITHOUT THE WRITTEN CONSENT OF JDB ASSOCIATES LIMITED. REPRODUCTION OF DRAWINGS IN ANY FORM WITHOUT THE CONSENT OF JDB ASSOCIATES LIMITED Voids THE DRAWING AT WHICH TIME JDB ASSOCIATES LIMITED ACCEPTS NO LIABILITY FOR THE DRAWING CONTENT OR WORKS RESULTING FROM SAID REPRODUCTION. DRAWINGS MAY BE REPRODUCED BY MUNICIPAL AND GOVERNMENT AGENCIES RESPONSIBLE FOR APPROVALS FOR THEIR OWN USE. JDB ASSOCIATES RESERVES THE RIGHT TO WITHDRAW ANY DRAWING(S) FROM GOVERNMENT OR MUNICIPAL AGENCIES WHETHER APPROVED OR NOT IN THE EVENT THAT ACCOUNTS ARE NOT SETTLED OR REMAIN OUTSTANDING.

IT IS THE RESPONSIBILITY OF THE CONTRACTOR TO VERIFY ALL DIMENSIONS ON THE SITE AND REPORT ANY DISCREPANCIES OR VARIATIONS FROM THE SUPPLIED INFORMATION TO THE LANDSCAPE ARCHITECT WITH THE PROJECT. JDB ASSOCIATES LIMITED IS NOT RESPONSIBLE FOR THE ACCURACY OF SURVEY, ARCHITECTURAL, MECHANICAL, ENGINEERING OR ELECTRICAL INFORMATION SHOWN ON THE DRAWING. FOR FURTHER INFORMATION REFER TO APPROPRIATE SURVEY, ARCHITECTURAL, MECHANICAL, ENGINEERING OR ELECTRICAL DRAWINGS PRIOR TO PROCEEDING WITH ANY WORKS.

THIS DRAWING IS NOT TO BE SCALED.

BASE PLAN REVISED: October 2025

Client info:
CENTRAL CLEAR VIEW DEVELOPMENTS INC.

ACCEPTED BY:

DATE: _____

LANDSCAPE ARCHITECTS STAMP
Tel: 705-623-8726
nbaisjdbel@rogers.com

JDB ASSOCIATES LTD.
Urban Designers
Landscape Architects
Arborists
Tel: 705-722-6278
jdb@lassociates@rogers.com
1046 Flos Road Four East, Phepston, ON, L0L 2K0

**Nicholas Apartment Building
Picton**

CONCRETE STEPS AND PLANTER DETAILS

SCALE:	DESIGNED BY:	REVIEWED BY:
N.T.S.	SIT	NB
TOWN FILE No.	OUR FILE REF. #	LP-6
	35-23	